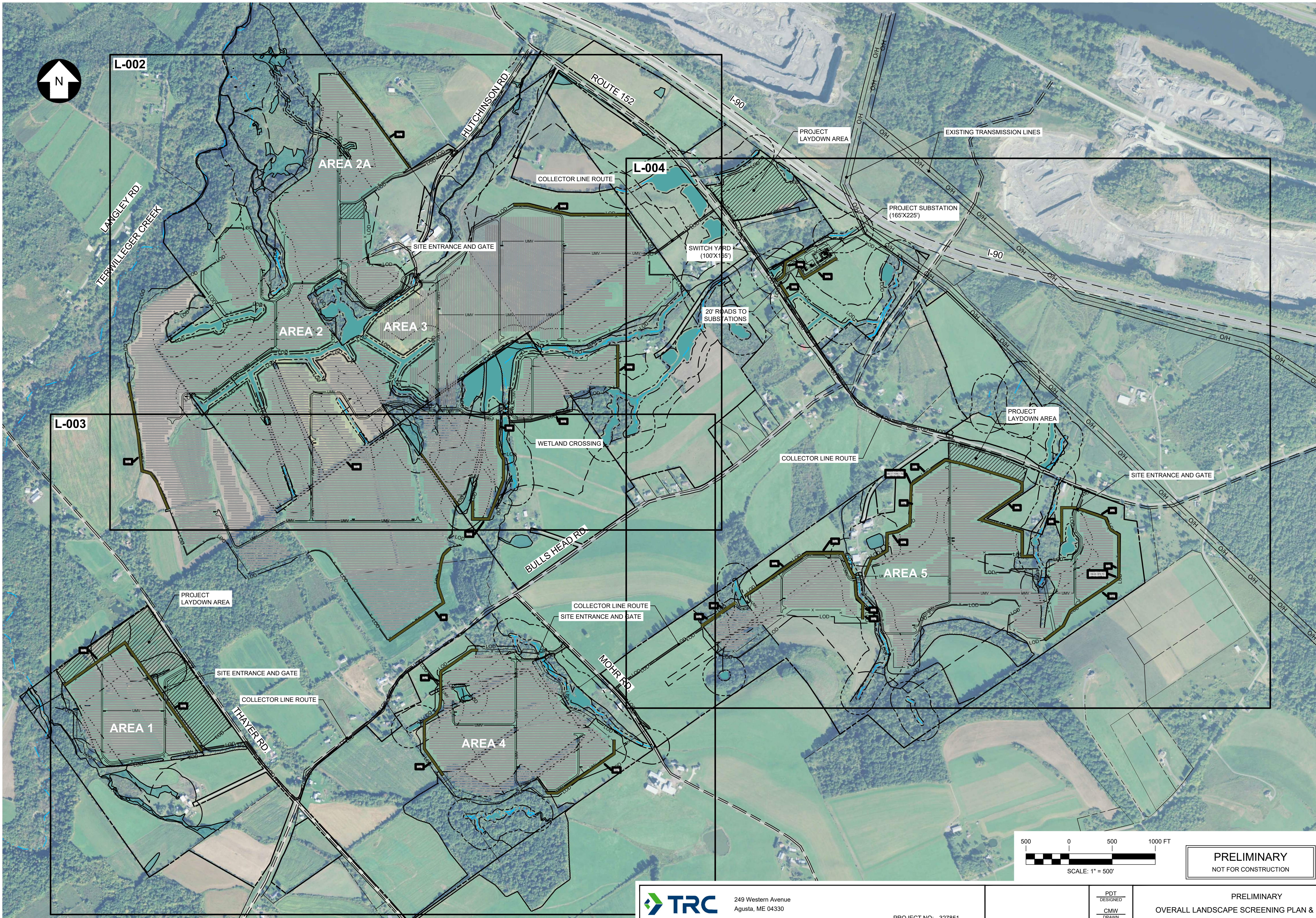


327851-HIGH RIVER-L-001.dwg 2020.05.19

UNDER NEW YORK STATE EDUCATION LAW ARTICLE 145 (ENGINEERING), SECTION 7209 (2), IT IS A VIOLATION OF THE LAW FOR ANY PERSON, UNLESS ACTING UNDER THE DIRECTION OF A LICENSED PROFESSIONAL ENGINEER, TO ALTER THIS DOCUMENT.



249 Western Avenue
Agusta, ME 04330

PROJECT NO: 327851

REFERENCE ITEMS		REV	DESCRIPTION		DATE	DES	CHK	APP
		E	ISSUED FOR CLIENT REVIEW		08-21-19	CMW	PGT	
		D	ISSUED FOR CLIENT REVIEW		08-09-19	SEK	PGT	
		C	ISSUED FOR CLIENT REVIEW		07-19-19	SEK	PGT	
		B	ISSUED FOR CLIENT REVIEW		06-20-19	CMW	PGT	

PDT
DESIGNED
CMW
DRAWN
CHECKED
APPROVED

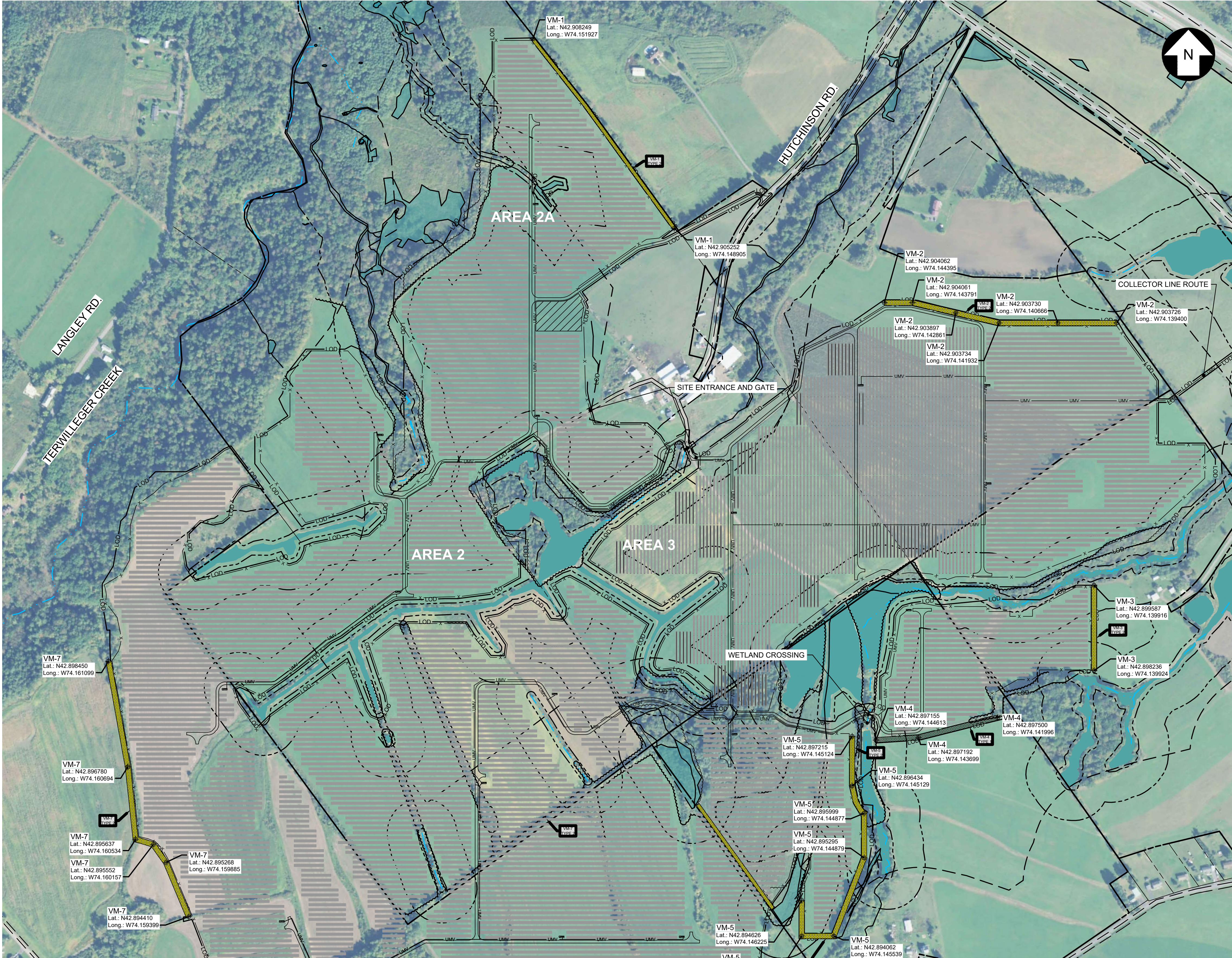
PRELIMINARY
OVERALL LANDSCAPE SCREENING PLAN & KEY SHEET
HIGH RIVER ENERGY CENTER
HIGH RIVER ENERGY CENTER, LLC
MONTGOMERY CO., NY
FLORIDA



L-001

REV.
E

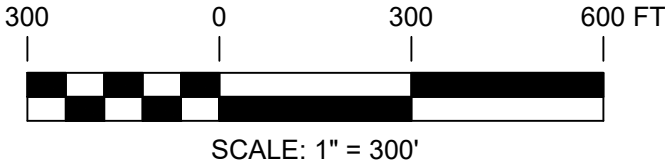




VEGETATIVE BUFER / SCREEN MITIGATION TABLE						
Point #	MITIGATION SECTION	MITIGATION TYPE	MITIGATION LENGTH	LATITUDE	LONGITUDE	COMMENTS
1	VM-1	TYPE 2	1360'	N 42.908257	W 74.151923	WIDTH MAY BE RESTRICTED DUE TO EXISTING VEGETATION
2	VM-1			N 42.905260	W 74.148900	
3	VM-2	TYPE 2	1352'	N 42.904071	W 74.144390	
4	VM-2			N 42.904069	W 74.143786	
5	VM-2			N 42.903905	W 74.142857	
6	VM-2			N 42.903742	W 74.141927	
7	VM-2			N 42.903738	W 74.140662	
8	VM-2			N 42.903734	W 74.139396	
9	VM-3	TYPE 2	516'	N 42.899229	W 74.142194	
10	VM-3			N 42.899129	W 74.141870	
13	VM-4	TYPE 1	715'	N 42.897508	W 74.141992	
14	VM-4			N 42.897200	W 74.143695	
15	VM-4	TYPE 2	1590'	N 42.897163	W 74.144609	
16	VM-5			N 42.897223	W 74.145120	
17	VM-5			N 42.896442	W 74.145124	
18	VM-5			N 42.896007	W 74.144872	
19	VM-5			N 42.895303	W 74.144875	
20	VM-5			N 42.894070	W 74.145535	
21	VM-5	SPA	1,456'	N 42.894072	W 74.146223	
22	VM-5			N 42.894634	W 74.146223	
23	VM-6			N 42.894509	W 74.146841	
24	VM-6			N 42.896155	W 74.148443	
117	VM-6			N 42.892403	W 74.147657	
118	VM-6			N 42.892694	W 74.147593	
119	VM-6	TYPE 2	1,608'	N 42.892082	W 74.147743	
120	VM-6			N 42.891903	W 74.147719	
121	VM-6			N 891410	W 74.147493	
122	VM-6			N 42.890205	W 74.149867	
25	VM-7			N 42.897057	W 74.149656	
26	VM-7			N 42.894605	W 74.154276	
27	VM-7			N 42.894607	W 74.154943	
28	VM-7			N 42.897436	W 74.157738	
123	VM-7			N 42.896789	W 74.160690	
124	VM-7			N 42.898459	W 74.161095	

327851-HIGH RIVER-L-001.dwg 2020.05.19

UNDER NEW YORK STATE EDUCATION LAW ARTICLE 145 (ENGINEERING), SECTION 7209 (2), IT IS A VIOLATION OF THE LAW FOR ANY PERSON, UNLESS ACTING UNDER THE DIRECTION OF A LICENSED PROFESSIONAL ENGINEER, TO ALTER THIS DOCUMENT.



PRELIMINARY
NOT FOR CONSTRUCTION



REFERENCE ITEMS	

TRC		249 Western Avenue Agusta, ME 04330		PROJECT NO: 327851			
REV	DESCRIPTION	DATE	DES	CHK	APP		
E	ISSUED FOR CLIENT REVIEW	08-21-19	CMW	PGT			
D	ISSUED FOR CLIENT REVIEW	08-09-19	SEK	PGT			
C	ISSUED FOR CLIENT REVIEW	07-19-19	SEK	PGT			
B	ISSUED FOR CLIENT REVIEW	06-20-19	CMW	PGT			

PDT DESIGNED		CMW DRAWN		CHECKED		APPROVED	
REVIEW 1		04/08 DATE		AS NOTED SCALE		REV. E	
REVIEW 2							

PRELIMINARY

LANDSCAPE SCREENING PLAN - SCREENING SCENARIOS

HIGH RIVER ENERGY CENTER

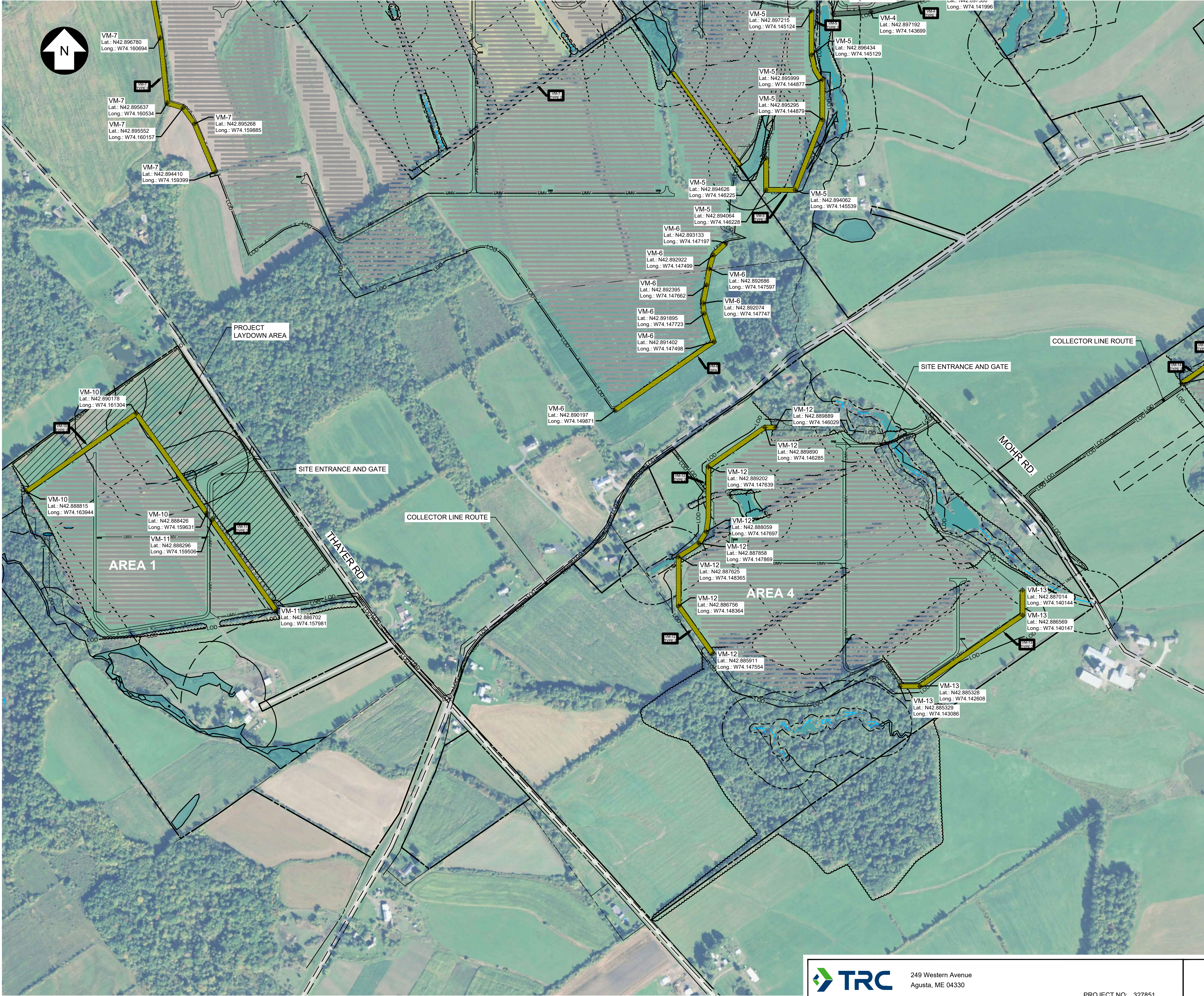
HIGH RIVER ENERGY CENTER, LLC

FLORIDA

MONTGOMERY CO., NY

TRC

L-002



VEGETATIVE BUFER / SCREEN MITIGATION TABLE						
Point #	MITIGATION SECTION	MITIGATION TYPE	MITIGATION LENGTH	LATITUDE	LONGITUDE	COMMENTS
44	VM-10	TYPE 2	1645'	N 42.888823	W 74.163940	
45	VM-10			N 42.890186	W 74.161299	
46	VM-10			N 42.888434	W 74.159626	
48	VM-11	TYPE 2	710'	N 42.888304	W 74.159501	
49	VM-11			N 42.886710	W 74.157976	
51	VM-12			N 42.885919	W 74.147550	
52	VM-12	TYPE 2	1865'	N 42.886764	W 74.148360	
53	VM-12			N 42.887633	W 74.148360	
54	VM-12			N 42.887866	W 74.147864	
55	VM-12			N 42.888067	W 74.147693	
56	VM-12			N 42.889210	W 74.147634	
57	VM-12			N 42.889898	W 74.146280	
58	VM-12			N 42.889897	W 74.146025	
59	VM-13	TYPE 2	1090'	N 42.887022	W 74.140140	
60	VM-13			N 42.886577	W 74.140143	
61	VM-13			N 42.885336	W 74.142603	
62	VM-13			N 42.885337	W 74.143081	

300000600 FT

SCALE: 1" = 300'

PRELIMINARY
NOT FOR CONSTRUCTION

Call 811
before you dig

UNDER NEW YORK STATE EDUCATION LAW ARTICLE 145 (ENGINEERING), SECTION 7209 (2), IT IS A VIOLATION OF THE LAW FOR ANY PERSON, UNLESS ACTING UNDER THE DIRECTION OF A LICENSED PROFESSIONAL ENGINEER, TO ALTER THIS DOCUMENT.

REFERENCE ITEMS		PROJECT NO: 327851					
REV	DESCRIPTION	DATE	DES	CHK	APP		
E	ISSUED FOR CLIENT REVIEW	08-21-19	CMW	PGT			
D	ISSUED FOR CLIENT REVIEW	08-09-19	SEK	PGT			
C	ISSUED FOR CLIENT REVIEW	07-19-19	SEK	PGT			
B	ISSUED FOR CLIENT REVIEW	06-20-19	CMW	PGT			

PDT
DESIGNED

CMW
DRAWN

CHECKED

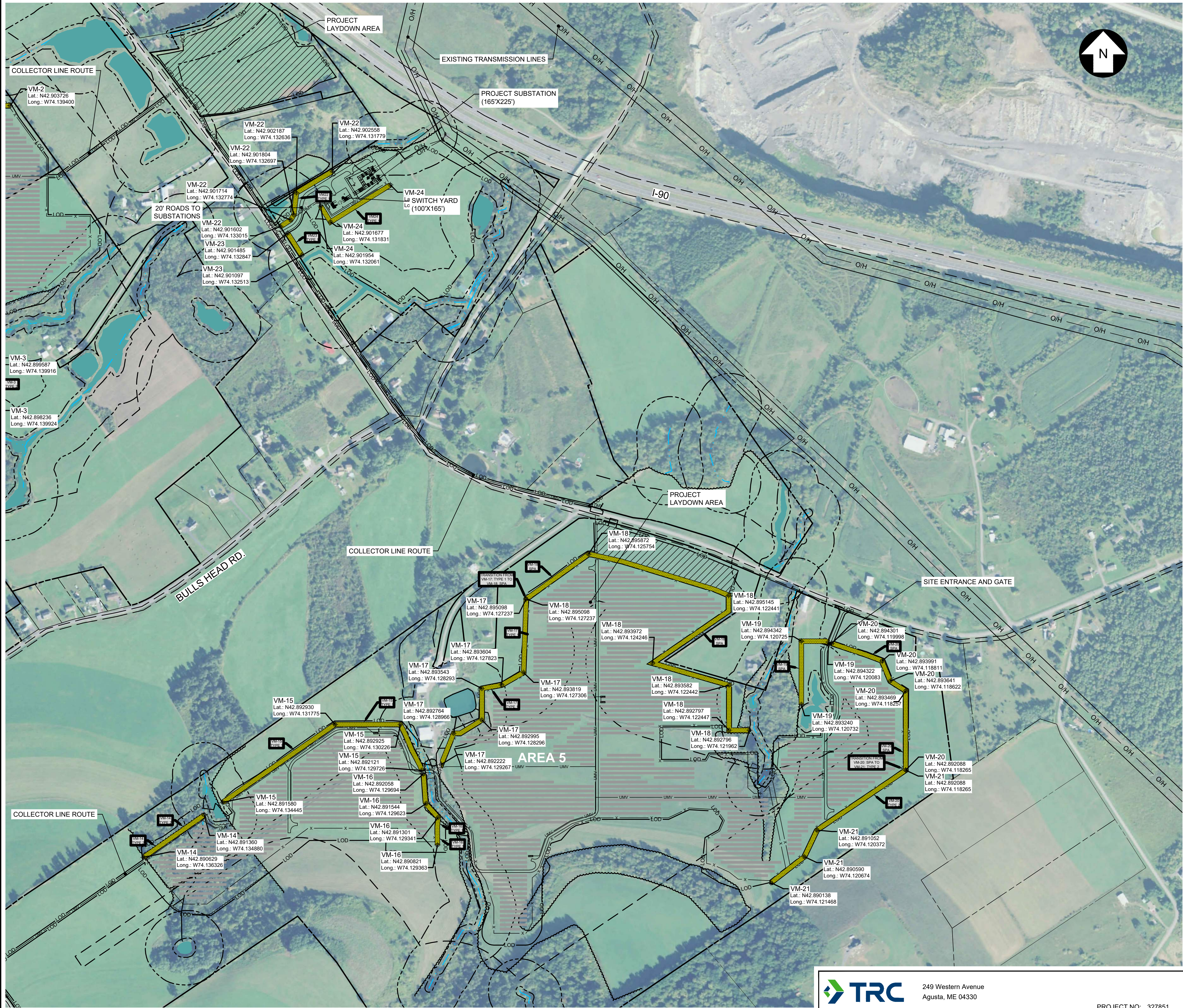
APPROVED

PRELIMINARY
LANDSCAPE SCREENING PLAN - SCREENING SCENARIOS
HIGH RIVER ENERGY CENTER
HIGH RIVER ENERGY CENTER, LLC
FLORIDA
MONTGOMERY CO., NY

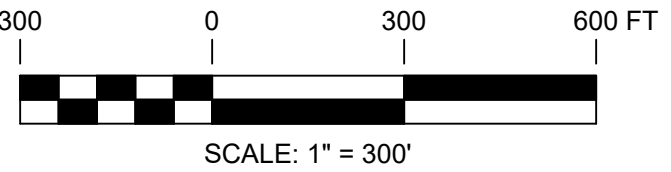
TRC

L-003

REV.
E



VEGETATIVE BUFER / SCREEN MITIGATION TABLE							
Point #	MITIGATION SECTION	MITIGATION TYPE	MITIGATION LENGTH	LATITUDE	LONGITUDE	COMMENTS	
63	VM-14	TYPE 2	470'	N 42.890637	W 74.136322		
64	VM-14			N 42.891369	W 74.134875		
65	VM-15			N 42.892129	W 74.129721		
66	VM-15	TYPE 1	1,605'	N 42.892933	W 74.130221		
67	VM-15			N 42.892938	W 74.131770		
68	VM-15			N 42.891588	W 74.134440		
69	VM-16	TYPE 1	480'	N 42.890829	W 74.129358		
70	VM-16			N 42.891309	W 74.129337		
71	VM-16			N 42.891553	W 74.129619		
72	VM-16	TYPE 1	1,370'	N 42.892066	W 74.129690		
73	VM-17			N 42.892230	W 74.129263		
74	VM-17			N 42.892772	W 74.128962		
75	VM-17	TYPE 1	3018'	N 42.893003	W 74.128292		
76	VM-17			N 42.893551	W 74.128289		
77	VM-17			N 42.893612	W 74.127819		
78	VM-17	SPA	575'	N 42.893804	W 74.127358		
80	VM-17			N 42.895176	W 74.127100		
81	VM-18			N 42.895176	W 74.127100		
82	VM-18	SPA	1,094'	N 42.895880	W 74.125750		
83	VM-18			N 42.895154	W 74.122436		
84	VM-18			N 42.893980	W 74.124242		
85	VM-18	SPA	575'	N 42.893591	W 74.122438		
86	VM-18			N 42.892805	W 74.122443		
87	VM-18			N 42.892804	W 74.121958		
92	VM-19	SPA	1,135'	N 42.893248	W 74.120727		
93	VM-19			N 42.894350	W 74.120720		
94	VM-19			N 42.894330	W 74.120078		
95	VM-20	SPA	522'	N 42.894309	W 74.119993		
96	VM-20			N 42.893999	W 74.118806		
97	VM-20			N 42.893477	W 74.118252		
98	VM-20	TYPE 2	167'	N 42.892096	W 74.118261		
99	VM-20			N 42.893649	W 74.118618		
100	VM-21			N 42.892096	W 74.118261		
101	VM-21	TYPE 1	656'	N 42.891060	W 74.120368		
102	VM-21			N 42.890598	W 74.120670		
103	VM-21			N 42.890147	W 74.121464		
104	VM-22	TYPE 1	167'	N 42.901610	W 74.133010		
105	VM-22			N 42.901722	W 74.132769		
106	VM-22			N 42.901812	W 74.132693		
107	VM-22	TYPE 1	167'	N 42.902195	W 74.132632		
108	VM-22			N 42.902566	W 74.131775		
109	VM-23			N 42.901493	W 74.132843		
110	VM-23	TYPE 1	656'	N 42.901105	W 74.132508		
114	VM-24			N 42.901962	W 74.132057		
115	VM-24			N 42.901686	W 74.131827		
116	VM-24	TYPE 1	656'	N 42.902325	W 74.130404		



PRELIMINARY
NOT FOR CONSTRUCTION



UNDER NEW YORK STATE EDUCATION LAW ARTICLE 145 (ENGINEERING), SECTION 7209 (2), IT IS A VIOLATION OF THE LAW FOR ANY PERSON, UNLESS ACTING UNDER THE DIRECTION OF A LICENSED PROFESSIONAL ENGINEER, TO ALTER THIS DOCUMENT.



249 Western Avenue
Agusta, ME 04330

PROJECT NO: 327851

REV	REFERENCE ITEMS	DESCRIPTION	DATE	DES	CHK	APP
E		ISSUED FOR CLIENT REVIEW	08-21-19	CMW	PGT	
D		ISSUED FOR CLIENT REVIEW	08-09-19	SEK	PGT	
C		ISSUED FOR CLIENT REVIEW	07-19-19	SEK	PGT	
B		ISSUED FOR CLIENT REVIEW	06-20-19	CMW	PGT	

PDT
DESIGNED
CMW
DRAWN
CHECKED
APPROVED

PRELIMINARY
LANDSCAPE SCREENING PLAN - SCREENING SCENARIOS
HIGH RIVER ENERGY CENTER
HIGH RIVER ENERGY CENTER, LLC
FLORIDA
MONTGOMERY CO., NY

REVIEW 1
DATE
AS NOTED
SCALE



L-004

REV.
E

1. THE LANDSCAPE PLAN AND DETAILS ARE FOR LANDSCAPING INFORMATION ONLY. PLEASE REFER TO THE SITE LAYOUT PLAN, GRADING PLAN AND/OR UTILITIES PLAN FOR ALL OTHER INFORMATION.

2. THE CONTRACTOR SHALL MONITOR AND GUARANTEE THAT ALL PLANTS, TREES, AND SHRUBS SHALL BE HEALTHY AND FREE OF DISEASE FOR A PERIOD OF (1) ONE YEAR AFTER SUBSTANTIAL COMPLETION AND ACCEPTANCE BY THE OWNER. CONTRACTOR SHALL REPLACE ANY DEAD OR UNHEALTHY PLANTS AT CONTRACTOR'S EXPENSE. FINAL ACCEPTANCE SHALL BE MADE IF ALL PLANTS MEET THE GUARANTEE REQUIREMENTS INCLUDING MAINTENANCE. MAINTENANCE RESPONSIBILITIES INCLUDE INVASIVE SPECIES MONITORING, REMOVAL, AND SUPPLEMENTATION. MONITORING OF THE PROJECT SITE SHALL OCCUR IN THE SPRING AND THE FALL TO DETERMINE THE PRESENCE OF INVASIVE SPECIES. SHOULD ANY INVASIVE SPECIES BE IDENTIFIED WITHIN THE PROJECT SITE, THE INVASIVE SPECIES SHALL BE REMOVED ACCORDING TO METHODS MOST LIKELY TO BE EFFECTIVE IN CONTROLLING THAT SPECIES AND SUPPLEMENTING ITS REPLACEMENT WITH APPROPRIATE VEGETATION AND SEED MIX IDENTIFIED (AND APPROVED) ON THIS PLAN AND/OR AN APPROVED EQUAL. ADDITIONAL MAINTENANCE RESPONSIBILITIES INCLUDE: APPROVED CULTIVATING, SPRAYING, WEEDING, WATERING, TIGHTENING OF TREE STRAP GUYS, PRUNING, FERTILIZING, MULCHING, AND ANY OTHER OPERATIONS NECESSARY TO MAINTAIN PLANT VIABILITY. MAINTENANCE SHALL BEGIN IMMEDIATELY AFTER PLANTING AND CONTINUE UNTIL 90 DAYS AFTER FINAL ACCEPTANCE.

3. THE CONTRACTOR SHALL SUPPLY ALL LABOR, PLANTS, APPROVED SEEDING MIX, AND MATERIALS IN QUANTITIES SUFFICIENT TO COMPLETE THE WORK SHOWN ON THE DRAWING(S) AND LISTED IN THE PLANT SCHEDULE(S) AND/OR SEEDING TABLE(S). IN THE EVENT OF A DISCREPANCY BETWEEN QUANTITIES SHOWN IN THE PLANT SCHEDULE AND/OR SEEDING TABLE AND THOSE REQUIRED BY THE DRAWINGS, THE LARGER SHALL APPLY. ALL PLANTS SHALL BE ACCUMULATED BY THE SUPPLY NURSERY FOR LOCAL HARDINESS ZONE AND BE CERTIFIED THAT THE PLANTING MATERIAL HAS BEEN GROWN FOR A MINIMUM OF (2) TWO YEARS AT THE SOURCE AND OBTAINED WITHIN 200 MILES OF PROJECT SITE UNLESS OTHERWISE APPROVED BY OWNER, CERTIFIED LANDSCAPE INSPECTOR, OR LANDSCAPE ARCHITECT.

4. THE LOCATIONS FOR PLANT MATERIAL ARE APPROXIMATE AND ARE SUBJECT TO FIELD ADJUSTMENT DUE TO SLOPE, VEGETATION, AND SITE FACTORS SUCH AS THE LOCATION OF ROCK OUTCROPS. PRIOR TO PLANTING THE CONTRACTOR SHALL ACCURATELY STAKE OUT THE LOCATIONS FOR ALL PLANTS. THE OWNER, CERTIFIED LANDSCAPE INSPECTOR, OR LANDSCAPE ARCHITECT SHALL APPROVE THE FIELD LOCATIONS OR ADJUSTMENTS OF THE PLANT MATERIAL.

5. ALL SHRUB MASSING SHALL BE MULCHED TO A DEPTH OF 2" AND SHREDDED HARDWOOD BARK MULCH SHALL BE USED FOR SHRUB MASSING AREAS.

6. NO PLANT SHALL BE PLACED IN THE GROUND BEFORE ROUGH GRADING HAS BEEN COMPLETED AND APPROVED BY THE OWNER, CERTIFIED LANDSCAPE INSPECTOR, OR LANDSCAPE CONTRACTOR. STAKING THE LOCATION OF ALL TREES AND SHRUBS SHALL BE COMPLETED PRIOR TO PLANTING FOR APPROVAL BY THE OWNER, CERTIFIED LANDSCAPE INSPECTOR, OR LANDSCAPE ARCHITECT. STAKING OF THE INSTALLED TREE MUST BE COMPLETED THE SAME DAY AS IT IS INSTALLED. ALL TREES SHALL BE STAKED OR GUYED AS PER THE DETAIL. SEE LANDSCAPING PLAN(S) FOR PLANTING DETAILS.

7. COORDINATE PLANT MATERIAL LOCATIONS WITH SITE UTILITIES. SEE SITE LAYOUT, GRADING AND/OR UTILITY PLANS FOR STORM, SANITARY, GAS, ELECTRIC, TELEPHONE AND WATER LINES. UTILITY LOCATIONS ARE APPROXIMATE. EXERCISE CARE WHEN DIGGING IN AREAS OF POTENTIAL CONFLICT WITH UNDERGROUND OR OVERHEAD UTILITIES. THE CONTRACTOR IS RESPONSIBLE FOR ANY DAMAGE DUE TO CONTRACTOR'S NEGLIGENCE AND SHALL REPLACE OR REPAIR ANY DAMAGE AT CONTRACTOR'S EXPENSE.

8. LANDSCAPE PLANTING PITS MUST BE FREE DRAINING. PAVEMENT, COMPACTED SUBGRADE, AND BLASTED ROCK SHALL BE REMOVED TO A DEPTH OF 2' OR TO A GREATER DEPTH IF REQUIRED BY PLANTING DETAILS OR SPECIFICATIONS. REPLACE SOIL WITH MODERATELY COMPACTED LOAM OR SANDY LOAM FREE FROM STONES AND RUBBISH 1" OR GREATER IN DIAMETER AND ANY OTHER MATERIAL HARMFUL TO PLANT GROWTH AND DEVELOPMENT. PLANTING INSTALLATION SHALL BE AS DETAILED AND CONTAIN PLANTING MIX AS SPECIFIED UNLESS RECOMMENDED OTHERWISE BY SOIL ANALYSIS.

PLANTING SOIL MIXTURE:
2 PARTS PEAT MOSS
5 PARTS TOPSOIL
MYCORHIZA INOCULANT - "TRANSPLANT 1-STEP" AS MANUFACTURED BY ROOTS, INC. OR APPROVED EQUAL. USE PER MANUFACTURER'S RECOMMENDATIONS FOR TREES AND SHRUBS. FERTILIZER/LIME APPLY AS RECOMMENDED BY SOIL ANALYSIS

• TREES, AND SHRUBS: TREES AND SHRUBS SHALL BE NURSERY GROWN UNLESS OTHERWISE NOTED AND HARDY UNDER CLIMATIC CONDITIONS SIMILAR TO THOSE IN THE LOCATION OF THE PROJECT. THEY SHALL BE TYPICAL OF THEIR SPECIES OR VARIETY, WITH NORMAL HABIT OF GROWTH. THEY SHALL BE SOUND, HEALTHY, VIGOROUS, WELL-BRANCHED AND DENSELY FOLIATED WHEN IN LEAF. THEY SHALL BE FREE OF DISEASE, INSECT PESTS, EGGS OR LARVAE. THEY SHALL HAVE HEALTHY AND WELL-DEVELOPED ROOT SYSTEMS. ALL TREES SHALL HAVE STRAIGHT SINGLE TRUNKS WITH THEIR MAIN LEADER INTACT UNLESS OTHERWISE STATED. THE OWNER, CERTIFIED LANDSCAPE INSPECTOR, OR LANDSCAPE ARCHITECT SHALL ONLY PERMIT SUBSTITUTIONS UPON WRITTEN APPROVAL. THEIR SIZES SHALL CONFORM TO THE MEASUREMENT SPECIFIED ON THE DRAWINGS. PLANTS LARGER THAN SPECIFIED ON THE DRAWINGS MAY BE USED IF APPROVED. THE USE OF SUCH PLANTS SHALL NOT INCREASE THE CONTRACT PRICE. ALL TREES AND SHRUBS SHALL BE MULCHED IN ACCORDANCE WITH THE RESPECTIVE PLANTING DETAIL(S) PROVIDED IN THE LANDSCAPING PLAN.

• ALL PRUNING SHALL CONFORM TO THE TREE CARE INDUSTRY ASSOCIATION (TCIA) ANSI A300 (PART 1) - 2017 PRUNING STANDARDS. PRUNING STANDARDS SHALL RECOGNIZE BUT, ARE NOT LIMITED TO, THE FOLLOWING PRUNING OBJECTIVES: MANAGE RISK, MANAGE HEALTH, DEVELOP STRUCTURE, PROVIDE CLEARANCE, MANAGE SIZE OR SHAPE, IMPROVE AESTHETICS, MANAGE PRODUCTION OF FRUIT, FLOWERS, OR OTHER PRODUCTS, AND/OR MANAGE WILDLIFE HABITAT. DEVELOPING STRUCTURE SHALL IMPROVE BRANCH AND TRUNK ARCHITECTURE, PROMOTE OR SUBORDINATE CERTAIN LEADERS, STEMS, OR BRANCHES; PROMOTE DESIRABLE BRANCH SPACING; PROMOTE OR DISCOURAGE GROWTH IN A PARTICULAR DIRECTION (DIRECTIONAL PRUNING); MINIMIZE FUTURE INTERFERENCE WITH TRAFFIC, LINES OF SIGHT, INFRASTRUCTURE, OR OTHER PLANTS; RESTORE PLANTS FOLLOWING DAMAGE; AND/OR REJUVENATE SHRUBS. PROVIDING CLEARANCE SHALL ENSURE SAFE AND RELIABLE UTILITY SERVICES; MINIMIZE CURRENT INTERFERENCE WITH TRAFFIC, LINES OF SITE, INFRASTRUCTURE, OR OTHER PLANTS; RAISE CROWN(S) FOR MOVEMENT OF TRAFFIC OR LIGHT PENETRATION; ENSURE LINES OF SIGHT OR DESIRED VIEWS; PROVIDE ACCESS TO SITES, BUILDINGS, OR OTHER STRUCTURES; AND/OR COMPLY WITH REGULATIONS.

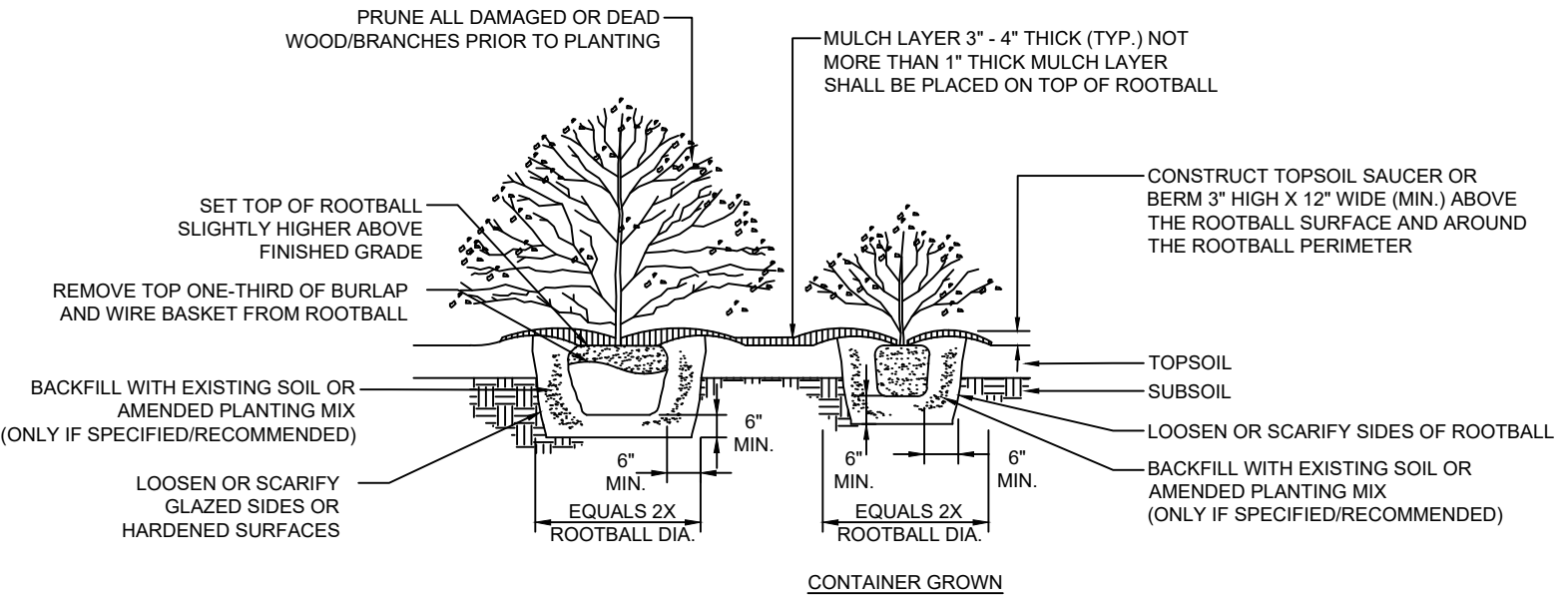
• TOPSOIL SHALL BE INSTALLED AT A MINIMUM DEPTH OF 4 INCHES. CONTRACTOR SHALL SUBMIT TOPSOIL TO A CERTIFIED TESTING LABORATORY TO DETERMINE PH, FERTILITY, ORGANIC CONTENT AND MECHANICAL COMPOSITION. THE CONTRACTOR SHALL SUBMIT THE TEST RESULTS FROM REGIONAL EXTENSION OFFICE OF USDA TO THE OWNER, CERTIFIED LANDSCAPE INSPECTOR, OR LANDSCAPE ARCHITECT FOR REVIEW AND APPROVAL. CONTRACTOR SHALL INCORPORATE AMENDMENTS FOR GOOD PLANT GROWTH AND PROPER SOIL ACIDITY RECOMMENDED FROM THE TOPSOIL TEST.

• NO PHOSPHOROUS SHALL BE USED AT PLANTING TIME UNLESS SOIL TESTING HAS BEEN COMPLETED AND TESTED BY A HORTICULTURAL TESTING LAB AND SOIL TESTS SPECIFICALLY INDICATE A PHOSPHOROUS DEFICIENCY THAT IS HARMFUL, OR WILL PREVENT NEW LAWNS/GRASSES AND PLANTINGS FROM ESTABLISHING PROPERLY.

• IF SOIL TESTS INDICATE A PHOSPHOROUS DEFICIENCY THAT WILL IMPACT PLANT AND LAWN ESTABLISHMENT, PHOSPHOROUS SHALL BE APPLIED AT THE MINIMUM RECOMMENDED LEVEL PRESCRIBED IN THE SOIL TEST FOLLOWING ALL APPLICABLE STANDARDS, REQUIREMENTS, AND/OR REGULATIONS.

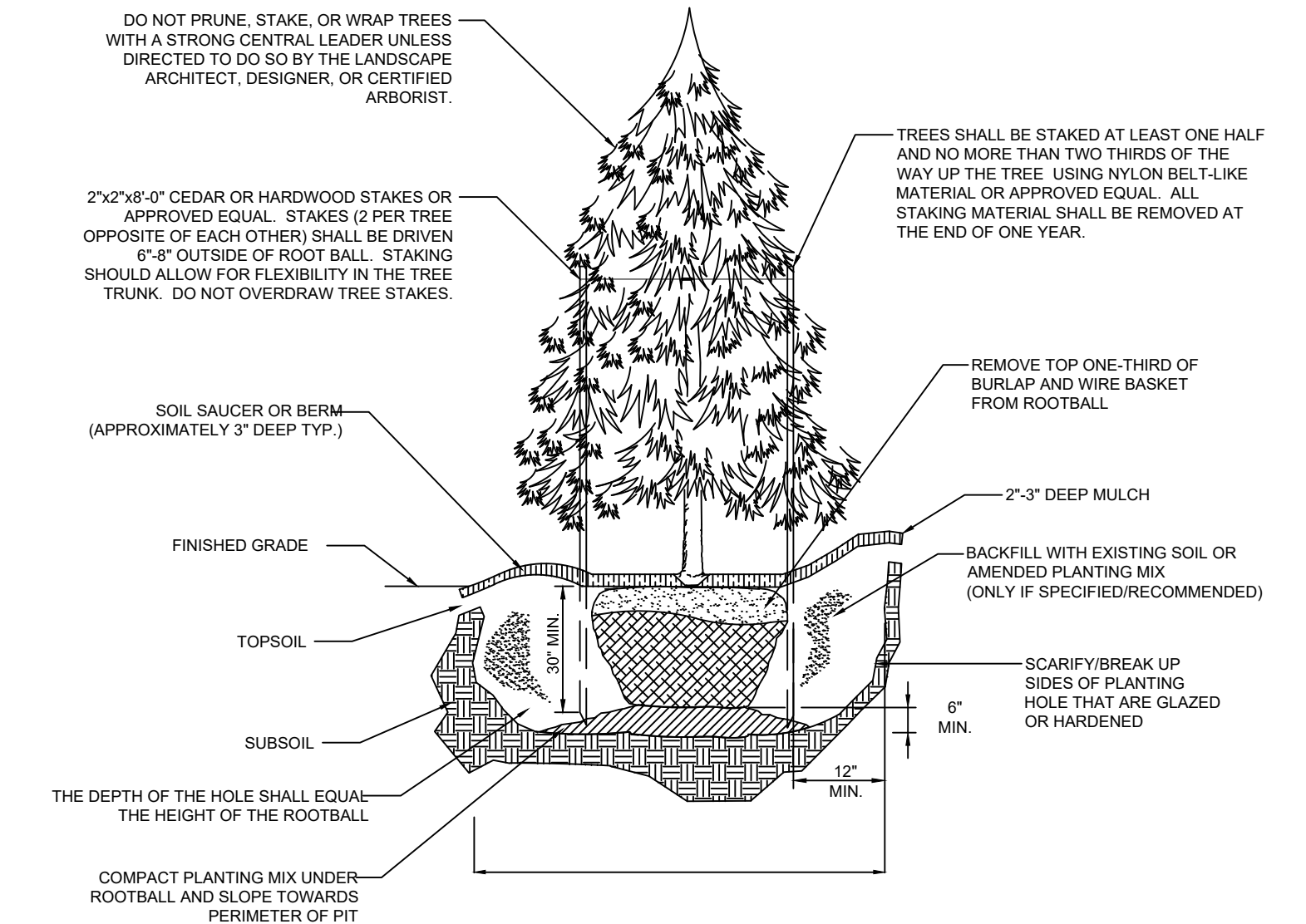
• ALL SLOPES GREATER THAN 3:1 RECEIVING A WILDFLOWER, WETLAND, AND/OR GRASS SEEDING MIXTURE SHALL BE COVERED WITH AN EROSION CONTROL BLANKET.

• ALL WILDFLOWERS AND GRASSES SOWED SHALL BE ALLOWED TO GROW TO THEIR NATURALLY OCCURRING HEIGHTS WHENEVER POSSIBLE. NATIVE WILDFLOWERS AND/OR GRASSES CAN BE MOWED/MAINTAINED (WITHIN ACCEPTABLE AREAS IDENTIFIED AND/OR APPROVED BY APPROPRIATE REGULATORY AGENCIES) AS OFTEN AS NEEDED TO KEEP THE VEGETATION AT A DESIRED AND/OR MANAGEABLE/MANICURED HEIGHT.



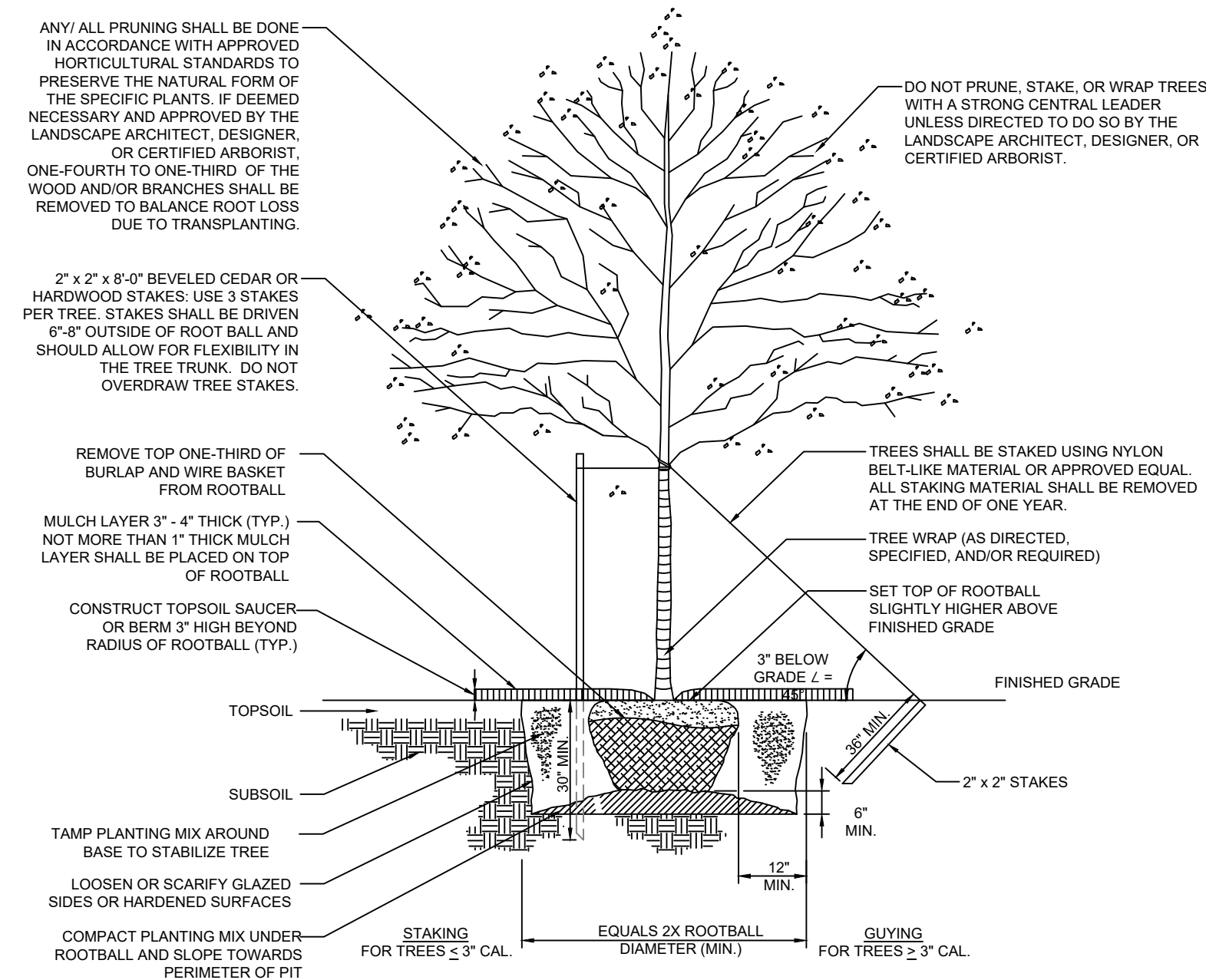
SHRUB PLANTING DETAIL

N.T.S.



EVERGREEN TREE PLANTING DETAIL

N.T.S.



NATIVE/DECIDUOUS TREE PLANTING DETAIL

N.T.S.

UNDER NEW YORK STATE EDUCATION LAW ARTICLE 145 (ENGINEERING), SECTION 7209 (2), IT IS A VIOLATION OF THE LAW FOR ANY PERSON, UNLESS ACTING UNDER THE DIRECTION OF A LICENSED PROFESSIONAL ENGINEER, TO ALTER THIS DOCUMENT.

LEGEND VISUAL MITIGATION PLANTING TEMPLATE TYPE 1

LANDSCAPE PLANTING SCHEDULE TOTALS (MAXIMUM VISUAL BUFFER/SCREENING EFFORT)

DECIDUOUS AND EVERGREEN TREES

SYMBOL	BOTANICAL NAME/ COMMON PLANT NAME	QUANTITY	SIZE	ROOT	MATURE HEIGHT
AA	AMELANCHIER ARBOREA DOWNY SHADBUSH	32	5'-8' HT. CLUMP	B&B	15'-20' HT.
AB	ABIES BALSAMEA BALSAM FIR	75	5'-6' HT.	B&B	45'-65' HT.
JV	JUNIPERUS VIRGINIANA EASTERN RED CEDAR	64	5'-6' HT.	B&B	40'-50' HT.
PG	PICEA GLAUCA WHITE SPRUCE	78	5'-6' HT.	B&B	40'-60' HT.
PS	PRUNUS SEROTINO BLACK CHERRY	51	2" CAL. MIN.	B&B	50'-70' HT.
TO	THUJA OCCIDENTALIS NORTHERN WHITE CEDAR	570	5'-6' HT.	B&B	40'-60' HT.

SHRUBS

SYMBOL	BOTANICAL NAME/ COMMON PLANT NAME	QUANTITY	SIZE	ROOT	MATURE HEIGHT
AR	ARONIA ARBUTIFOLIA RED CHOKEBERRY	180	24"-30" HT.	#3/5 CONT.	7'-10' HT.
CS	CORNUS SERICEA RED TWIG DOGWOOD	167	24"-30" HT.	#3/5 CONT.	7'-9' HT.
HV	HAMAMELIS VIRGINIANA COMMON WITCH HAZEL	100	3'-4' HT.	B&B	15'-25' HT.
SA	SYMPHORICARPOS ALBUS COMMON SNOWBERRY	150	24"-30" HT.	#3/5 CONT.	3'-6' HT.
VC	VACCINIUM CORYMBOSUM HIGHBUSH BLUEBERRY	110	24"-30" HT.	#3/5 CONT.	6'-12' HT.

LEGEND VISUAL MITIGATION PLANTING TEMPLATE TYPE 2

LANDSCAPE PLANTING SCHEDULE TOTALS (REDUCED VISUAL BUFFER/SCREENING EFFORT)

DECIDUOUS AND EVERGREEN TREES

SYMBOL	BOTANICAL NAME/ COMMON PLANT NAME	QUANTITY	SIZE	ROOT	MATURE HEIGHT
AA	AMELANCHIER ARBOREA DOWNY SHADBUSH	94	5'-8' HT. CLUMP	B&B	15'-20' HT.
AB	ABIES BALSAMEA BALSAM FIR	385	5'-6' HT.	B&B	45'-65' HT.
PG	PICEA GLAUCA WHITE SPRUCE	205	5'-6' HT.	B&B	40'-60' HT.
PS	PRUNUS SEROTINO BLACK CHERRY	116	2" CAL. MIN.	B&B	50'-70' HT.
TO	THUJA OCCIDENTALIS NORTHERN WHITE CEDAR	514	5'-6' HT.	B&B	40'-60' HT.

SHRUBS

SYMBOL	BOTANICAL NAME/ COMMON PLANT NAME	QUANTITY	SIZE	ROOT	MATURE HEIGHT
AR	ARONIA ARBUTIFOLIA RED CHOKEBERRY	283	24"-30" HT.	#3/5 CONT.	7'-10' HT.
CS	CORNUS SERICEA RED TWIG DOGWOOD	302	24"-30" HT.	#3/5 CONT.	7'-9' HT.
HV	HAMAMELIS VIRGINIANA COMMON WITCH HAZEL	466	3'-4' HT.	B&B	15'-25' HT.
SA	SYMPHORICARPOS ALBUS COMMON SNOWBERRY	290	24"-30" HT.	#3/5 CONT.	3'-6' HT.
VC	VACCINIUM CORYMBOSUM HIGHBUSH BLUEBERRY	362	24"-30" HT.	#3/5 CONT.	6'-12' HT.

LEGEND VISUAL MITIGATION PLANTING TEMPLATE TYPES 1 AND 2

LANDSCAPE PLANTING SCHEDULE OVERALL PLANTING TOTALS

DECIDUOUS AND EVERGREEN TREES

SYMBOL	BOTANICAL NAME/ COMMON PLANT NAME	QUANTITY	SIZE	ROOT	MATURE HEIGHT
AA	AMELANCHIER ARBOREA DOWNY SHADBUSH	126	5'-8' HT. CLUMP	B&B	15'-20' HT.
AB	ABIES BALSAMEA BALSAM FIR	460	5'-6' HT.	B&B	45'-65' HT.
JV	JUNIPERUS VIRGINIANA EASTERN RED CEDAR	64	5'-6' HT.	B&B	40'-50' HT.
PG	PICEA GLAUCA WHITE SPRUCE	283	5'-6' HT.	B&B	40'-60' HT.
PS	PRUNUS SEROTINO BLACK CHERRY	167	2" CAL. MIN.	B&B	50'-70' HT.
TO	THUJA OCCIDENTALIS NORTHERN WHITE CEDAR	1,084	5'-6' HT.	B&B	40'-60' HT.

SHRUBS

SYMBOL	BOTANICAL NAME/ COMMON PLANT NAME	QUANTITY	SIZE	ROOT	MATURE HEIGHT
AR	ARONIA ARBUTIFOLIA RED CHOKEBERRY	463	24"-30" HT.	#3/5 CONT.	7'-10' HT.
CS	CORNUS SERICEA RED TWIG DOGWOOD	469	24"-30" HT.	#3/5 CONT.	7'-9' HT.
HV	HAMAMELIS VIRGINIANA COMMON WITCH HAZEL	566	3'-4' HT.	B&B	15'-25' HT.
SA	SYMPHORICARPOS ALBUS COMMON SNOWBERRY	440	24"-30" HT.	#3/5 CONT.	3'-6' HT.
VC	VACCINIUM CORYMBOSUM HIGHBUSH BLUEBERRY	472	24"-30" HT.	#3/5 CONT.	6'-12' HT.

SOLAR FARM GRASS SEED MIXES

NATIVE/NATURALIZED SOLAR FARM SEED MIX				
BOTANICAL NAME	COMMON NAME	MIX CONCENTRATION	RATE (LBS./ACRE)	RATE (LBS./1000 FT ²)
FESTUCA RUBRA	CREeping RED FESCUE	34%	262	6
FESTUCA OVINA	SHEEP FESCUE	33%		
FESTUCA BREVIPILA 'BEACON'	HARD FESCUE 'BEACON'	10%		
FESTUCA OVINA VAR. DURIUSCULA 'RHINO'	HARD FESCUE 'RHINO'	5%		
FESTUCA OVINA VAR. GLAUCA (F. ARVERNENSIS) (F. GLAUCA) 'BLUE RAY'	BLUE FESCUE 'BLUE RAY'	5%		
POA PRATENSIS 'ARGYLE'	KENTUCKY BLUEGRASS 'ARGYLE'	5%		
POA PRATENSIS 'SHAMROCK'	KENTUCKY BLUEGRASS 'SHAMROCK'	5%	3%	
AGROSTIS PERENNANS, ALBANY PINE BUSH-NY ECOTYPE	AUTUMN BENTGRASS, ALBANY PINE BUSH-NY ECOTYPE			

NOTE:

GRASS SEED MIXES ARE COMPRISED OF GRASSES THAT ARE NATIVE AND/OR INDIGENOUS TO THE AREA AND/OR CONSIDERED FAVORABLE FOR WILDLIFE HABITAT AND SUSTAINABLE GROWTH. ADDITIONALLY, THE SOLAR FARM SEED MIX WAS DEVELOPED ESPECIALLY FOR NATIVE GRASS PLANTINGS AROUND SOLAR ARRAY FIELDS AND SHALL BE UTILIZED ACCORDINGLY. THESE GRASSES WILL MATURE OUT TO A HEIGHT OF APPROXIMATELY 2 TO 2 1/2 FEET HIGH.

LEGEND VISUAL MITIGATION PLANTING TEMPLATE SPECIAL PLANTING AREA

LANDSCAPE PLANTING SCHEDULE TOTALS (INCREASED SIZE IN NURSERY STOCK)

DECIDUOUS AND EVERGREEN TREES

SYMBOL	BOTANICAL NAME/ COMMON PLANT NAME	QUANTITY	SIZE	ROOT	MATURE HEIGHT
AA	AMELANCHIER ARBOREA DOWNY SHADBUSH	28	6'-8' HT. CLUMP	B&B	15'-20' HT.
AB	ABIES BALSAMEA BALSAM FIR	60	7'-8' HT.	B&B	45'-65' HT.
JV	JUNIPERUS VIRGINIANA EASTERN RED CEDAR	54	7'-8' HT.	B&B	40'-50' HT.
NS	NYSSA SYLVATICA BLACK GUM	47	2 1/2" CAL. MIN.	B&B	40'-60' HT.
PG	PICEA GLAUCA WHITE SPRUCE	56	7'-8' HT.	B&B	40'-60' HT.
PS	PRUNUS SEROTINO BLACK CHERRY	44	2" CAL. MIN.	B&B	50'-70' HT.
TO	THUJA OCCIDENTALIS NORTHERN WHITE CEDAR	490	7'-8' HT.	B&B	40'-60' HT.

SHRUBS

SYMBOL	BOTANICAL NAME/ COMMON PLANT NAME	QUANTITY	SIZE	ROOT	MATURE HEIGHT
AR	ARONIA ARBUTIFOLIA RED CHOKEBERRY	107	24"-30" HT.	#3/5 CONT.	7'-10' HT.
CS	CORNUS SERICEA RED TWIG DOGWOOD	141	24"-30" HT.	#3/5 CONT.	7'-9' HT.
HV	HAMAMELIS VIRGINIANA COMMON WITCH HAZEL	83	3'-4' HT.	B&B	15'-25' HT.
SA	SYMPHORICARPOS ALBUS COMMON SNOWBERRY	135	24"-30" HT.	#3/5 CONT.	3'-6' HT.
VC	VACCINIUM CORYMBOSUM HIGHBUSH BLUEBERRY	97	24"-30" HT.	#3/5 CONT.	6'-12' HT.

NOTE: PLANTING TOTALS FOR SPECIAL PLANTING AREAS ARE KEPT SEPARATE DUE TO INCREASED SIZES OF PROPOSED NURSERY STOCK

PRELIMINARY
NOT FOR CONSTRUCTION



249 Western Avenue
Agusta, ME 04330

PROJECT NO: 327851

REFERENCE ITEMS	REV	DESCRIPTION	DATE	DES	CHK	APP
	E	ISSUED FOR CLIENT REVIEW	08-21-19	CMW	PGT	
	D	ISSUED FOR CLIENT REVIEW	08-09-19	SEK	PGT	
	C	ISSUED FOR CLIENT REVIEW	07-19-19	SEK	PGT	
	B	ISSUED FOR CLIENT REVIEW	06-20-19	CMW	PGT	

PDT
DESIGNED
CMW
DRAWN
CHECKED
APPROVED

PRELIMINARY
LANDSCAPE NOTES, DETAILS & PLANTING SCHEDULES
HIGH RIVER ENERGY CENTER
HIGH RIVER ENERGY CENTER, LLC
FLORIDA
MONTGOMERY CO., NY

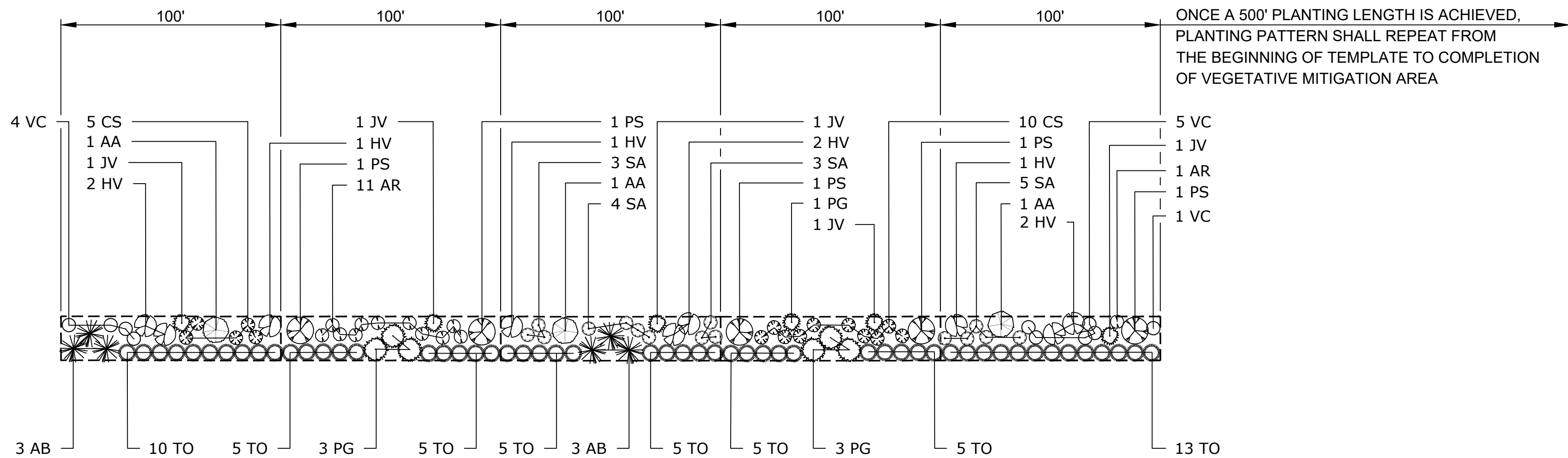
REVIEW 1
REVIEW 2

04/08
DATE
AS NOTED
SCALE



L-005

REV.
E



LEGEND VISUAL MITIGATION PLANTING TEMPLATE TYPE I

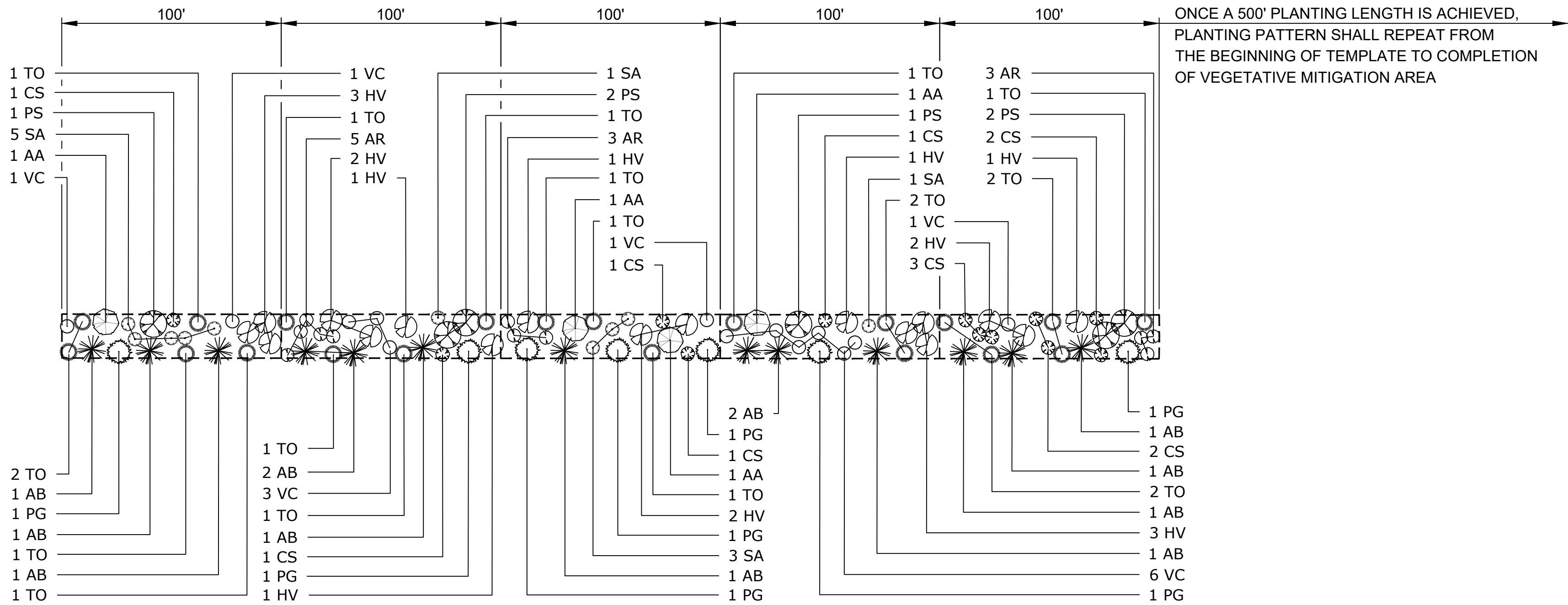
LANDSCAPE PLANTING SCHEDULE (MAXIMUM VISUAL BUFFER/SCREENING EFFORT)

DECIDUOUS AND EVERGREEN TREES

SYMBOL	BOTANICAL NAME/ COMMON PLANT NAME	QUANTITY	SIZE	ROOT	MATURE HEIGHT
AA	AMELANCHIER ARBOREA DOWNY SHADBUSH	3	5'-6" HT. CLUMP	B&B	15'-20' HT.
AB	ABIES BALSAMEA BALSAM FIR	6	5'-6" HT.	B&B	45'-65' HT.
JV	JUNIPERUS VIRGINIANA EASTERN RED CEDAR	6	5'-6" HT.	B&B	40'-50' HT.
PG	PICEA GLAUCA WHITE SPRUCE	6	5'-6" HT.	B&B	40'-60' HT.
PS	PRUNUS SEROTINO BLACK CHERRY	5	2" CAL. MIN.	B&B	50'-70' HT.
TO	THUJA OCCIDENTALIS NORTHERN WHITE CEDAR	53	5'-6" HT.	B&B	40'-60' HT.

SHRUBS

SYMBOL	BOTANICAL NAME/ COMMON PLANT NAME	QUANTITY	SIZE	ROOT	MATURE HEIGHT
AR	ARONIA ARBUTIFOLIA RED CHOKEBERRY	12	24"-30" HT.	#3/5 CONT.	7'-10' HT.
CS	CORNUS SERICEA RED TWIG DOGWOOD	15	24"-30" HT.	#3/5 CONT.	7'-9' HT.
HV	HAMAMELIS VIRGINIANA COMMON WITCH HAZEL	9	3'-4" HT.	B&B	15'-25' HT.
SA	SYMPHORICARPOS ALBUS COMMON SNOWBERRY	15	24"-30" HT.	#3/5 CONT.	3'-6' HT.
VC	VACCINIUM CORYMBOSUM Highbush Blueberry	10	24"-30" HT.	#3/5 CONT.	6'-12' HT.



LEGEND VISUAL MITIGATION PLANTING TEMPLATE TYPE 2

LANDSCAPE PLANTING SCHEDULE (REDUCED VISUAL BUFFER/SCREENING EFFORT)

DECIDUOUS AND EVERGREEN TREES

SYMBOL	BOTANICAL NAME/ COMMON PLANT NAME	QUANTITY	SIZE	ROOT	MATURE HEIGHT
AA	AMELANCHIER ARBOREA DOWNY SHADBUSH	3	5'-6" HT. CLUMP	B&B	15'-20' HT.
AB	ABIES BALSAMEA BALSAM FIR	13	5'-6" HT.	B&B	45'-65' HT.
PG	PICEA GLAUCA WHITE SPRUCE	7	5'-6" HT.	B&B	40'-60' HT.
PS	PRUNUS SEROTINO BLACK CHERRY	4	2" CAL. MIN.	B&B	50'-70' HT.
TO	THUJA OCCIDENTALIS NORTHERN WHITE CEDAR	17	5'-6" HT.	B&B	40'-60' HT.

SHRUBS

SYMBOL	BOTANICAL NAME/ COMMON PLANT NAME	QUANTITY	SIZE	ROOT	MATURE HEIGHT
AR	ARONIA ARBUTIFOLIA RED CHOKEBERRY	11	24"-30" HT.	#3/5 CONT.	7'-10' HT.
CS	CORNUS SERICEA RED TWIG DOGWOOD	11	24"-30" HT.	#3/5 CONT.	7'-9' HT.
HV	HAMAMELIS VIRGINIANA COMMON WITCH HAZEL	16	3'-4" HT.	B&B	15'-25' HT.
SA	SYMPHORICARPOS ALBUS COMMON SNOWBERRY	9	24"-30" HT.	#3/5 CONT.	3'-6' HT.
VC	VACCINIUM CORYMBOSUM Highbush Blueberry	12	24"-30" HT.	#3/5 CONT.	6'-12' HT.

PRELIMINARY
NOT FOR CONSTRUCTION



UNDER NEW YORK STATE EDUCATION LAW ARTICLE 145 (ENGINEERING), SECTION 7209 (2), IT IS A VIOLATION OF THE LAW FOR ANY PERSON, UNLESS ACTING UNDER THE DIRECTION OF A LICENSED PROFESSIONAL ENGINEER, TO ALTER THIS DOCUMENT.



249 Western Avenue
Agusta, ME 04330

PROJECT NO: 327851

REFERENCE ITEMS		REV	DESCRIPTION		DATE	DES	CHK	APP
		E	ISSUED FOR CLIENT REVIEW		08-21-19	CMW	PGT	
		D	ISSUED FOR CLIENT REVIEW		08-09-19	SEK	PGT	
		C	ISSUED FOR CLIENT REVIEW		07-19-19	SEK	PGT	
		B	ISSUED FOR CLIENT REVIEW		06-20-19	CMW	PGT	

PDT
DESIGNED
CMW
DRAWN
CHECKED
APPROVED

PRELIMINARY
LANDSCAPE SCREENING TEMPLATES & PLANTING SCHEDULES
HIGH RIVER ENERGY CENTER
HIGH RIVER ENERGY CENTER, LLC
FLORIDA
MONTGOMERY CO., NY

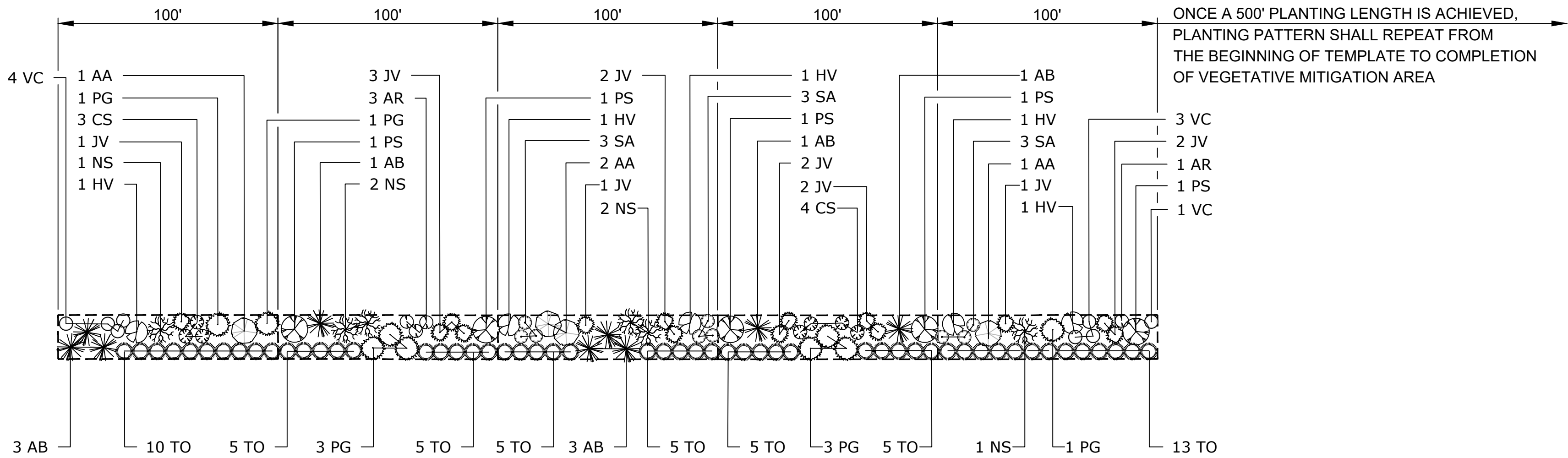
REVIEW 1
DATE
REVIEW 2
SCALE

04/08
DATE
AS NOTED
SCALE



L-006

REV.
E




LEGEND VISUAL MITIGATION PLANTING TEMPLATE - SPECIAL PLANTING AREA
LANDSCAPE PLANTING SCHEDULE (MAXIMUM VISUAL BUFFER/SCREENING EFFORT WITH MATURE NURSERY STOCK)

DECIDUOUS AND EVERGREEN TREES					
SYMBOL	BOTANICAL NAME/ COMMON PLANT NAME	QUANTITY	SIZE	ROOT	MATURE HEIGHT
AA	AMELANCHIER ARBOREA DOWNY SHADBUSH	3	6'-8' HT. CLUMP	B&B	15'-20' HT.
AB	ABIES BALSAMEA BALSAM FIR	6	7'-8' HT.	B&B	45'-65' HT.
JV	JUNIPERUS VIRGINIANA EASTERN RED CEDAR	6	7'-8' HT.	B&B	40'-50' HT.
NS	NYSSA SYLVATICA BLACK GUM	5	2 1/2" CAL. MIN.	B&B	40'-60' HT.
PG	PICEA GLAUCA WHITE SPRUCE	6	7'-8' HT.	B&B	40'-60' HT.
PS	PRUNUS SEROTINO BLACK CHERRY	5	2" CAL. MIN.	B&B	50'-70' HT.
TO	THUJA OCCIDENTALIS NORTHERN WHITE CEDAR	53	7'-8' HT.	B&B	40'-60' HT.

SHRUBS					
SYMBOL	BOTANICAL NAME/ COMMON PLANT NAME	QUANTITY	SIZE	ROOT	MATURE HEIGHT
AR	ARONIA ARBUTIFOLIA RED CHOKEBERRY	12	24"-30" HT.	#3/5 CONT.	7'-10' HT.
CS	CORNUS SERICEA RED TWIG DOGWOOD	15	24"-30" HT.	#3/5 CONT.	7'-9' HT.
HV	HAMAMELIS VIRGINIANA COMMON WITCH HAZEL	9	3'-4' HT.	B&B	15'-25' HT.
SA	SYMPHORICARPOS ALBUS COMMON SNOWBERRY	15	24"-30" HT.	#3/5 CONT.	3'-6' HT.
VC	VACCINIUM CORYMBOSUM Highbush Blueberry	10	24"-30" HT.	#3/5 CONT.	6'-12' HT.

UNDER NEW YORK STATE EDUCATION LAW ARTICLE
145 (ENGINEERING), SECTION 7209 (2), IT IS A
VIOLATION OF THE LAW FOR ANY PERSON, UNLESS
ACTING UNDER THE DIRECTION OF A LICENSED
PROFESSIONAL ENGINEER, TO ALTER THIS DOCUMENT.

REFERENCE ITEMS	

		249 Western Avenue Agusta, ME 04330		PROJECT NO: 327851		
REV	DESCRIPTION	DATE	DES	CHK	APP	
E	ISSUED FOR CLIENT REVIEW	08-21-19	CMW	PGT		
D	ISSUED FOR CLIENT REVIEW	08-09-19	SEK	PGT		
C	ISSUED FOR CLIENT REVIEW	07-19-19	SEK	PGT		
B	ISSUED FOR CLIENT REVIEW	06-20-19	CMW	PGT		

PDT
DESIGNED
CMW
DRAWN
CHECKED
APPROVED

PRELIMINARY
LANDSCAPE SCREENING TEMPLATES & PLANTING SCHEDULES
HIGH RIVER ENERGY CENTER
HIGH RIVER ENERGY CENTER, LLC
FLORIDA MONTGOMERY CO., NY

REVIEW 1
DATE
REVIEW 2
SCALE

04/08
DATE
AS NOTED
SCALE



L-007

REV.
E

PRELIMINARY
NOT FOR CONSTRUCTION

