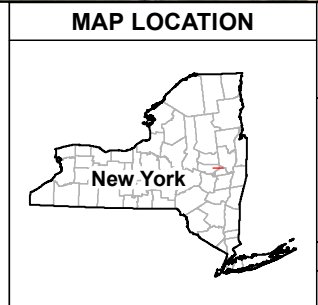
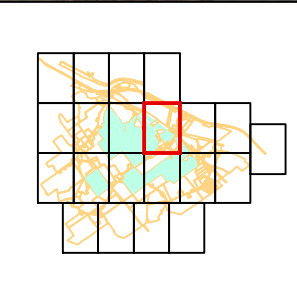


Project Area	Proposed Facility Components	Inverter
Adjacent Parcel	Buried Collector Line	Storm Culvert
	Fence	RipRip
	Infiltration Trench	HDD Location
	Interconnection Lines	Laydown Yard
	PV Panel Array	
	Substation/Switchyard	

Data: CanACRE, 2018
Base Map: NYS Office of Information Technology Services, GIS Program Office, 2017; Esri and its contributors

0 200 400 Feet



NEXTERA ENERGY RESOURCES

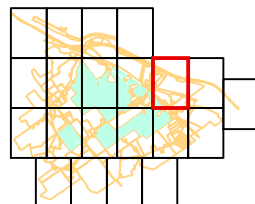
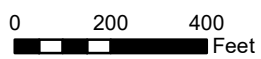
TAX PARCELS
HIGH RIVER ENERGY CENTER, LLC
TOWN OF FLORIDA, NY
SHEET 9 OF 22

FIGURE 4-3 OCTOBER 2019
 Map Produced by **TRC**



- Project Area
- Adjacent Parcel
- Buried Collector Line
- Fence
- Infiltration Trench
- PV Panel Array
- Laydown Yard

Data: CanACRE, 2018
 Base Map: NYS Office of Information Technology Services,
 GIS Program Office, 2017; Esri and its contributors



MAP LOCATION



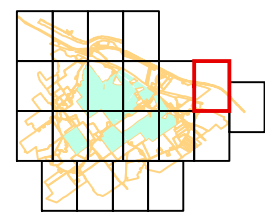
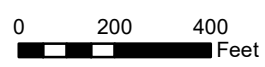
TAX PARCELS
HIGH RIVER ENERGY CENTER, LLC
TOWN OF FLORIDA, NY
SHEET 10 OF 22

FIGURE 4-3 OCTOBER 2019

Map Produced by TRC



Project Area
 Adjacent Parcel



MAP LOCATION

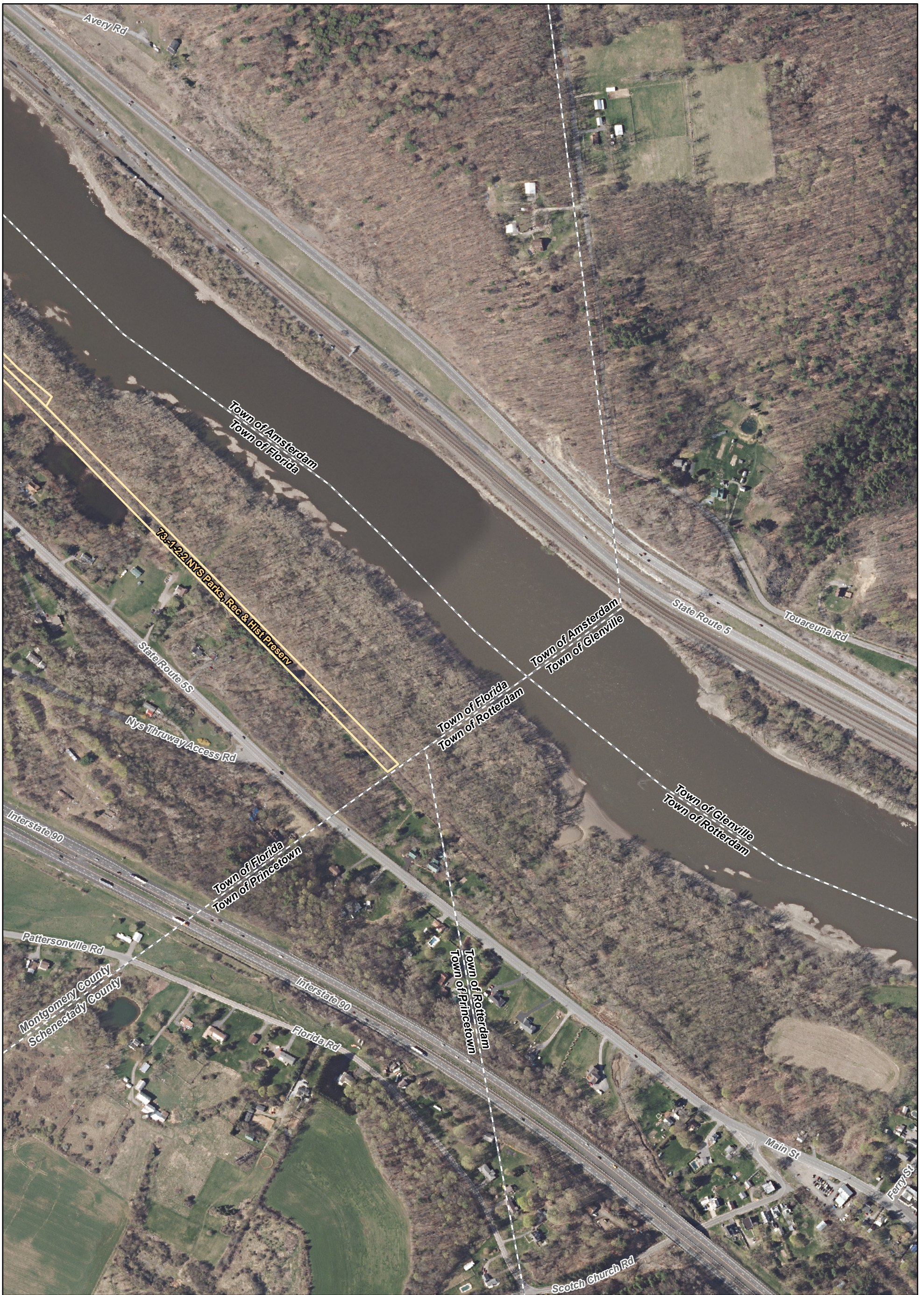


TAX PARCELS
HIGH RIVER ENERGY CENTER, LLC
TOWN OF FLORIDA, NY
SHEET 11 OF 22

FIGURE 4-3 OCTOBER 2019

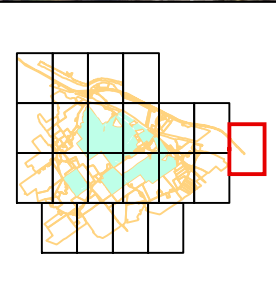
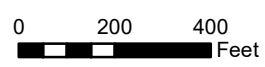
Map Produced by TRC


Data: CanACRE, 2018
 Base Map: NYS Office of Information Technology Services,
 GIS Program Office, 2017; Esri and its contributors




- Project Area
- Adjacent Parcel

Data: CanACRE, 2018
 Base Map: NYS Office of Information Technology Services,
 GIS Program Office, 2017; Esri and its contributors





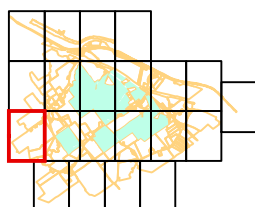
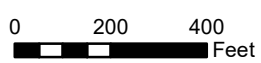
TAX PARCELS
HIGH RIVER ENERGY CENTER, LLC
TOWN OF FLORIDA, NY
SHEET 12 OF 22

FIGURE 4-3	OCTOBER 2019
Map Produced by 	



- Project Area
- Adjacent Parcel

Data: CanACRE, 2018
 Base Map: NYS Office of Information Technology Services,
 GIS Program Office, 2017; Esri and its contributors



MAP LOCATION

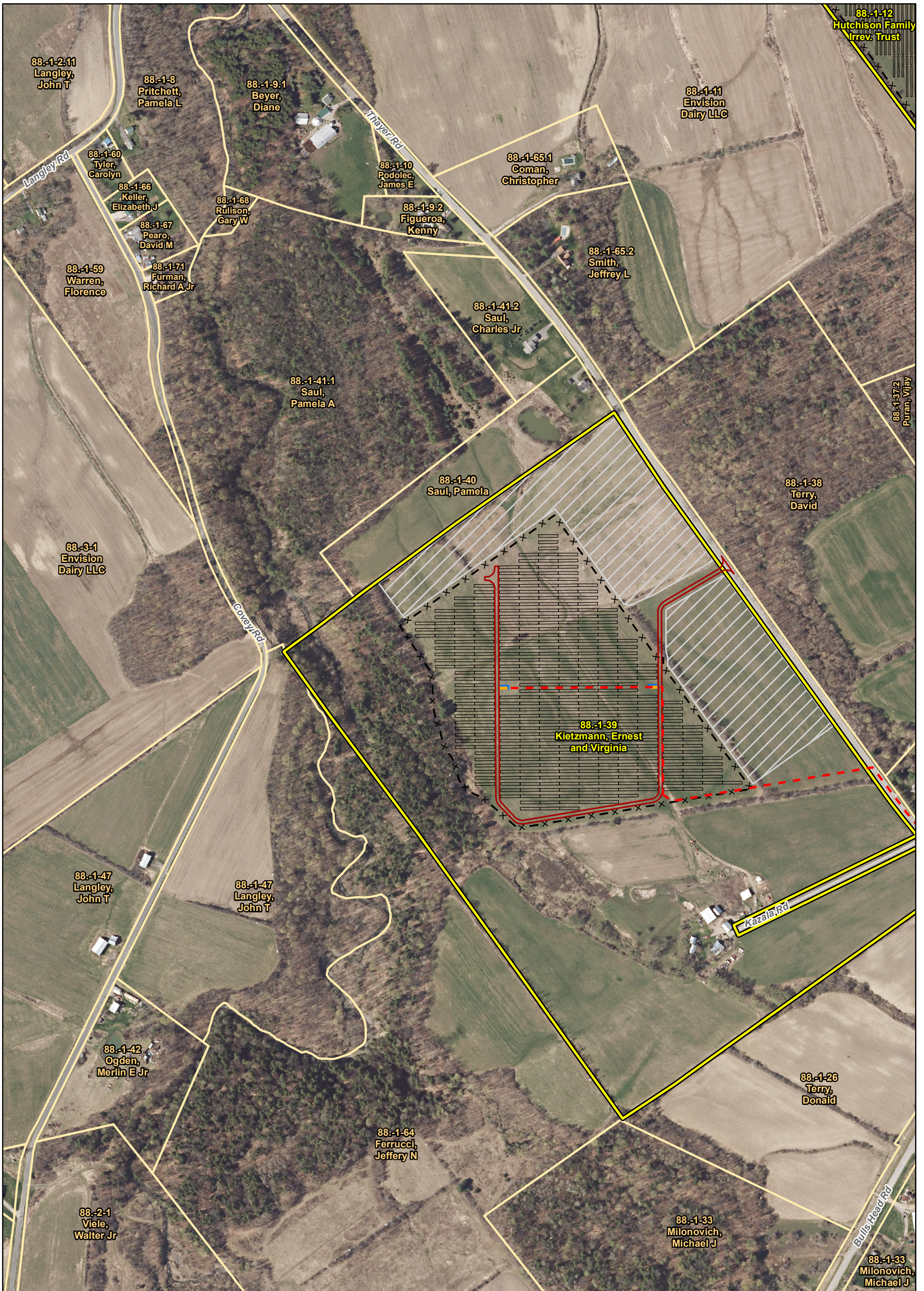


TAX PARCELS
HIGH RIVER ENERGY CENTER, LLC
TOWN OF FLORIDA, NY
SHEET 13 OF 22

FIGURE 4-3

OCTOBER 2019

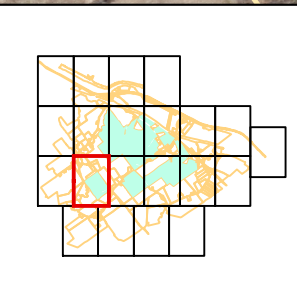
Map Produced by TRC



Project Area	Proposed Facility Components	Laydown Yard
Adjacent Parcel	Buried Collector Line	Fence
	Infiltration Trench	PV Panel Array
	Inverter	

Data: CanACRE, 2018
Base Map: NYS Office of Information Technology Services, GIS Program Office, 2017; Esri and its contributors

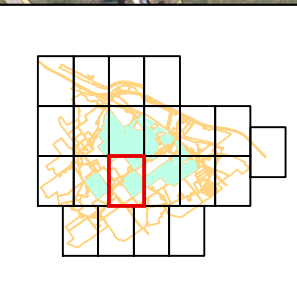
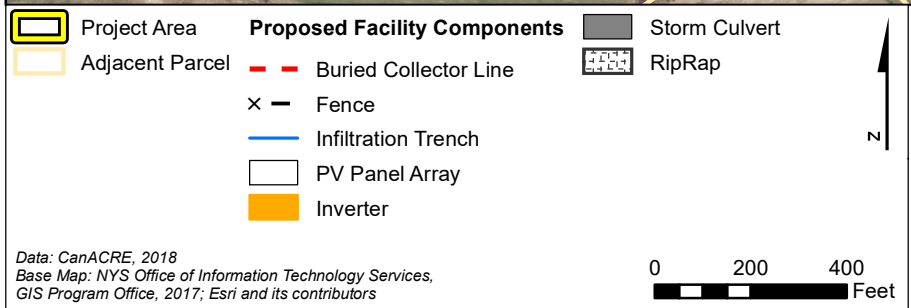
0 200 400 Feet



NEXTERA ENERGY RESOURCES

TAX PARCELS
HIGH RIVER ENERGY CENTER, LLC
TOWN OF FLORIDA, NY
SHEET 14 OF 22

FIGURE 4-3 OCTOBER 2019
Map Produced by **TRC**



NEXTERA
ENERGY RESOURCES

TAX PARCELS
HIGH RIVER ENERGY CENTER, LLC
TOWN OF FLORIDA, NY
SHEET 15 OF 22

FIGURE 4-3 OCTOBER 2019

Map Produced by **TRC**