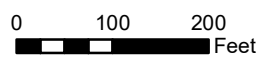


<ul style="list-style-type: none"> Project Area Adjacent Parcels 	<p>Proposed Facility Components</p> <ul style="list-style-type: none"> Buried Collector Line Fence Interconnection Lines Substation/Switchyard PV Panel Array Inverter 	<ul style="list-style-type: none"> Access Road Laydown Yard Figure Index 	<p style="text-align: center;">0 750 1,500 Feet</p>	<p style="text-align: center;">MAP LOCATION</p>	<p style="text-align: center;">NEXTERA ENERGY RESOURCES</p> <p style="text-align: center;">PROJECT COMPONENT LOCATIONS HIGH RIVER ENERGY CENTER, LLC TOWN OF FLORIDA, NY SHEET 1 OF 24</p> <p style="text-align: center;">FIGURE 3-1 OCTOBER 2019 Map Produced by TRC</p>
--	---	---	---	--	--

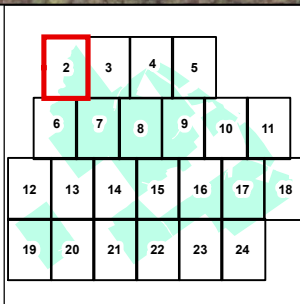
Base Map: NYS Office of Information Technology Services, GIS Program Office, 2018



- Project Area
- Adjacent Parcels
- Proposed Facility Components**
- Fence
- PV Panel Array



Data: CanACRE, 2018
 Base Map: NYS Office of Information Technology Services,
 GIS Program Office, 2017



MAP LOCATION



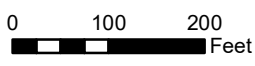
PROJECT COMPONENT LOCATIONS
HIGH RIVER ENERGY CENTER, LLC
TOWN OF FLORIDA, NY
SHEET 2 OF 24

FIGURE 3-1 | OCTOBER 2019

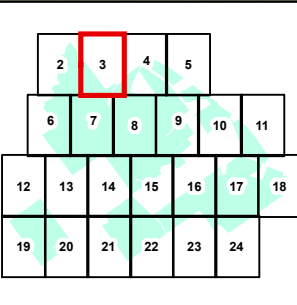
Map Produced by TRC



- Project Area
- Adjacent Parcels
- Proposed Facility Components**
- Buried Collector Line
- Fence
- Infiltration Trench
- PV Panel Array
- Inverter
- Access Road
- Storm Culvert
- Riprap





Data: CanACRE, 2018
 Base Map: NYS Office of Information Technology Services, GIS Program Office, 2017

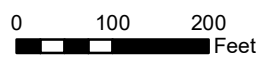


PROJECT COMPONENT LOCATIONS
 HIGH RIVER ENERGY CENTER, LLC
 TOWN OF FLORIDA, NY
 SHEET 3 OF 24

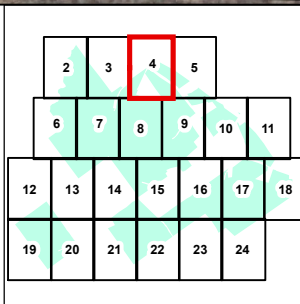
FIGURE 3-1 OCTOBER 2019
 Map Produced by



 Project Area
 Adjacent Parcels



Data: CanACRE, 2018
 Base Map: NYS Office of Information Technology Services,
 GIS Program Office, 2017




MAP LOCATION






PROJECT COMPONENT LOCATIONS
HIGH RIVER ENERGY CENTER, LLC
TOWN OF FLORIDA, NY
SHEET 4 OF 24

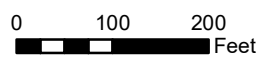
FIGURE 3-1

OCTOBER 2019

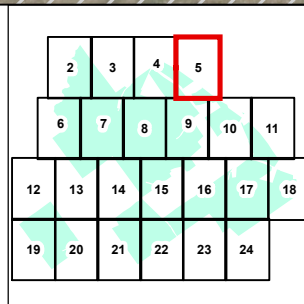
Map Produced by 



-  Project Area
-  Adjacent Parcels
-  Laydown Yard



Data: CanACRE, 2018
 Base Map: NYS Office of Information Technology Services,
 GIS Program Office, 2017




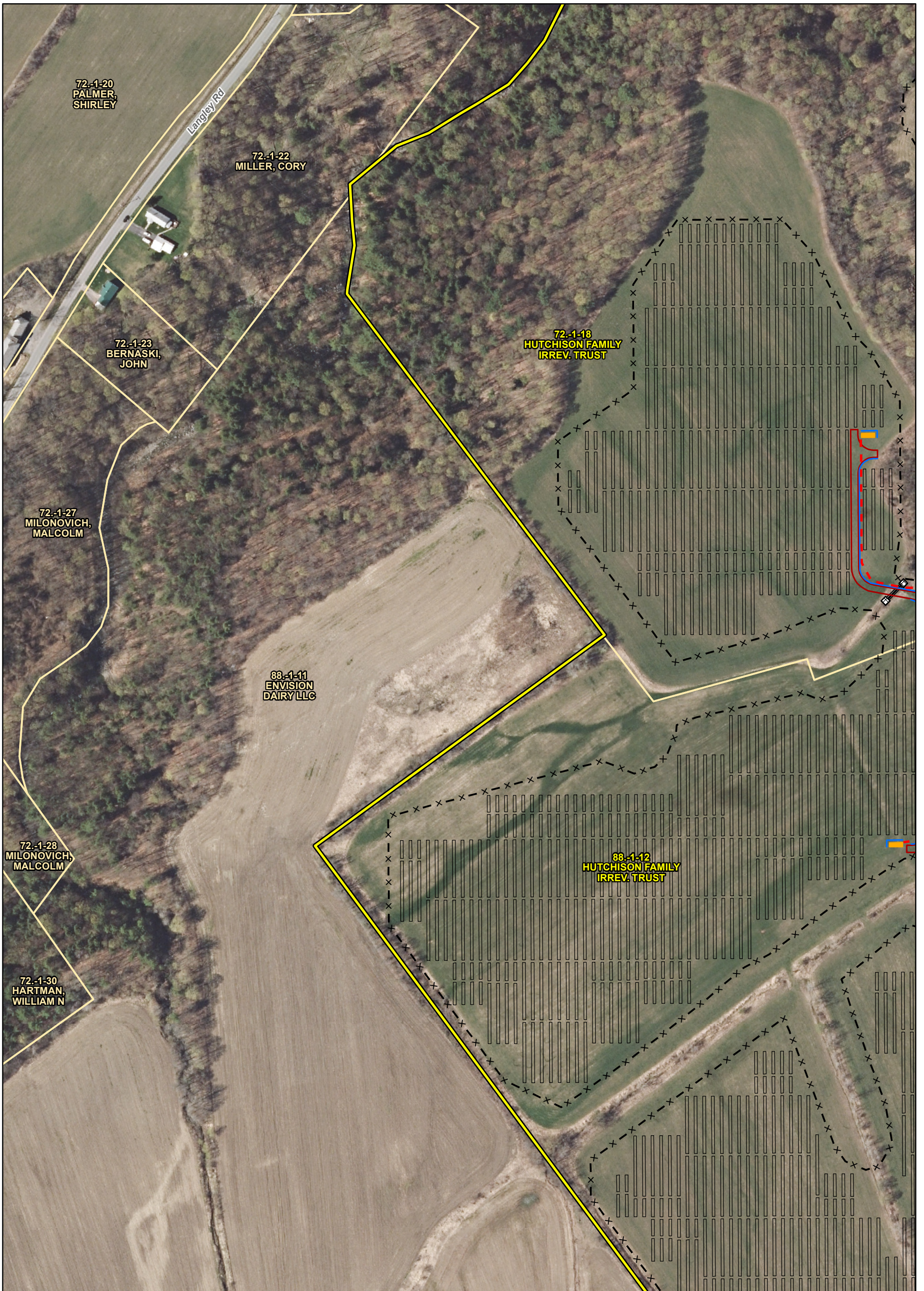
MAP LOCATION



PROJECT COMPONENT LOCATIONS
HIGH RIVER ENERGY CENTER, LLC
TOWN OF FLORIDA, NY
SHEET 5 OF 24

FIGURE 3-1 | OCTOBER 2019

Map Produced by 



Project Area	Access Road
Adjacent Parcels	Storm Culvert
Proposed Facility Components	Riprap
Buried Collector Line	
Fence	
Infiltration Trench	
PV Panel Array	
Inverter	

0 100 200 Feet

Data: CanACRE, 2018
Base Map: NYS Office of Information Technology Services, GIS Program Office, 2017

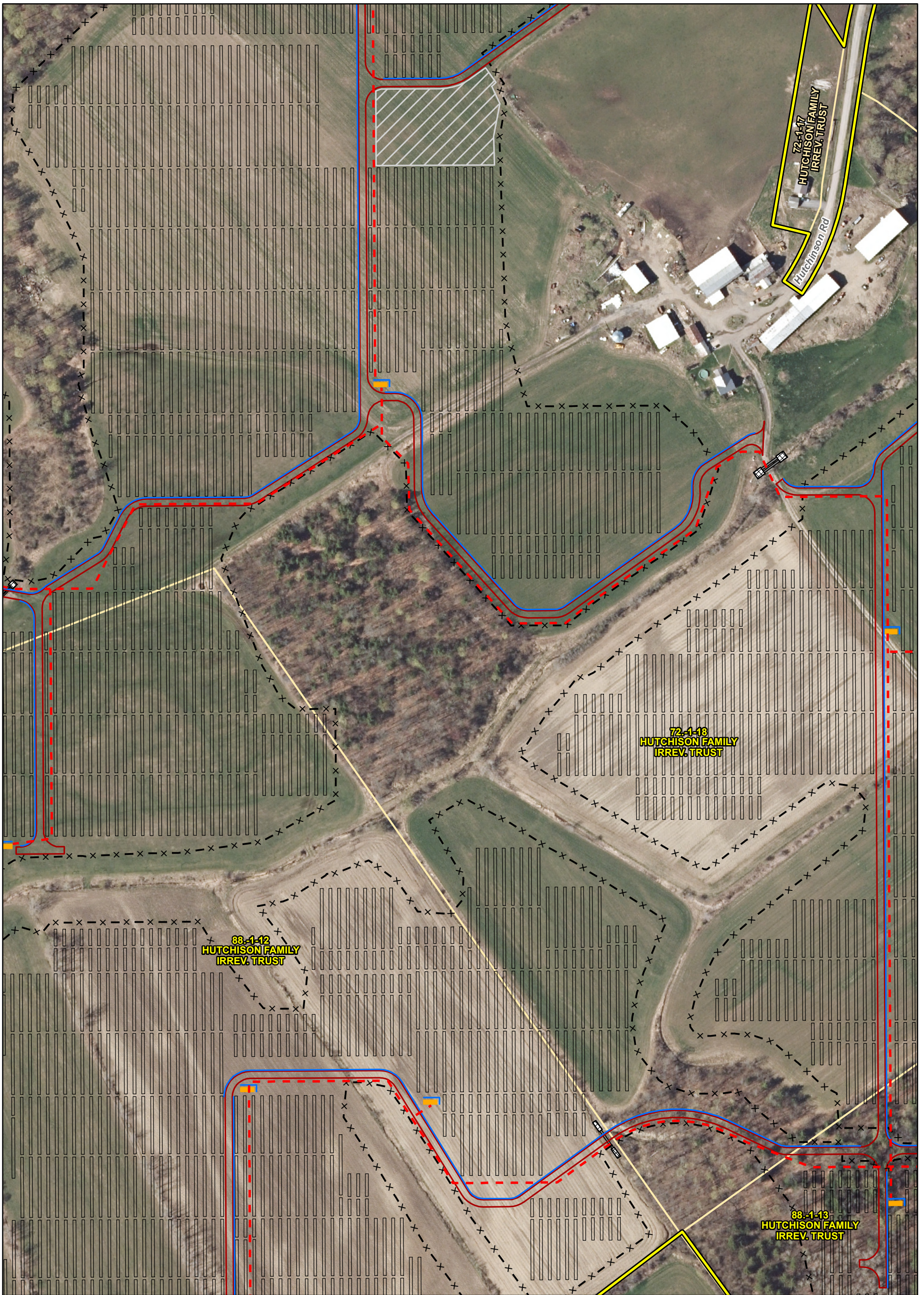
2	3	4	5			
6	7	8	9	10	11	
12	13	14	15	16	17	18
19	20	21	22	23	24	

MAP LOCATION

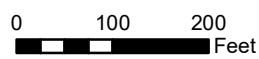
New York

PROJECT COMPONENT LOCATIONS
HIGH RIVER ENERGY CENTER, LLC
TOWN OF FLORIDA, NY
SHEET 6 OF 24

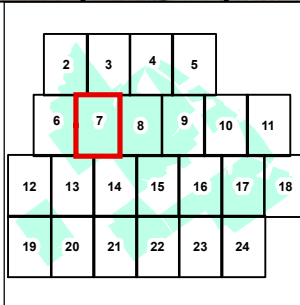
FIGURE 3-1 OCTOBER 2019
Map Produced by



- Project Area
- Access Road
- Adjacent Parcels
- Laydown Yard
- Proposed Facility Components**
- Buried Collector Line
- Storm Culvert
- Fence
- Infiltration Trench
- PV Panel Array
- Inverter
- Riprap



Data: CanACRE, 2018
Base Map: NYS Office of Information Technology Services, GIS Program Office, 2017



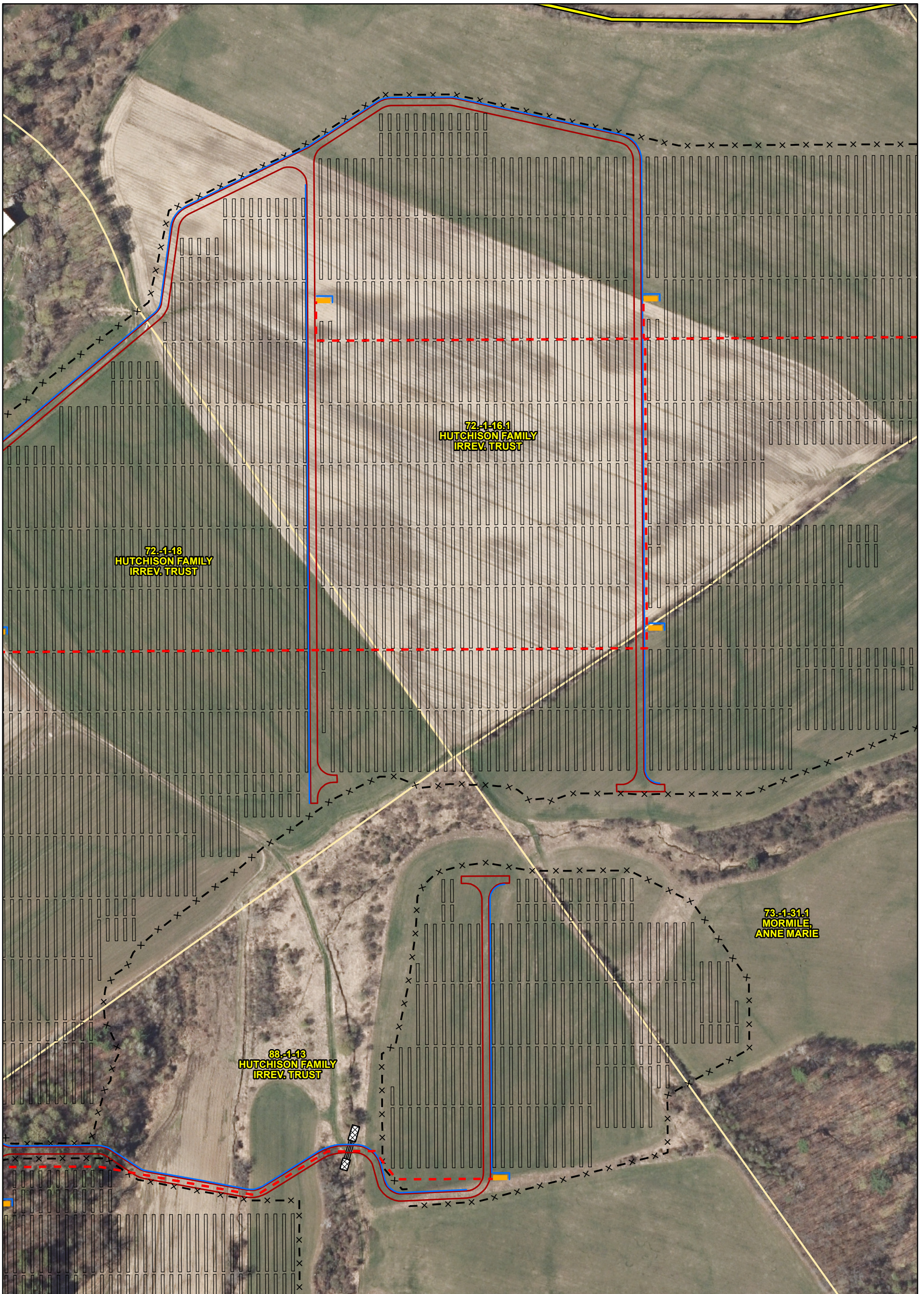
MAP LOCATION



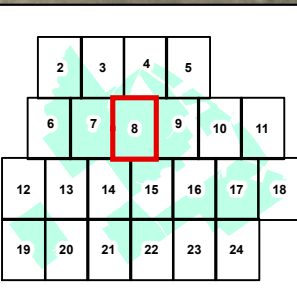
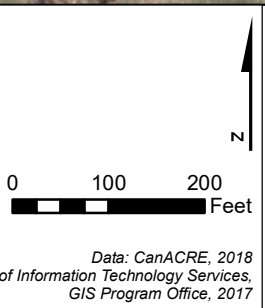
**PROJECT COMPONENT LOCATIONS
HIGH RIVER ENERGY CENTER, LLC
TOWN OF FLORIDA, NY
SHEET 7 OF 24**

FIGURE 3-1 OCTOBER 2019

Map Produced by TRC



- Project Area
- Access Road
- Adjacent Parcels
- Storm Culvert
- Proposed Facility Components**
- Buried Collector Line
- Fence
- Infiltration Trench
- PV Panel Array
- Inverter
- Riprap





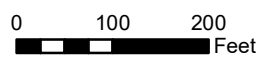
PROJECT COMPONENT LOCATIONS
HIGH RIVER ENERGY CENTER, LLC
TOWN OF FLORIDA, NY
SHEET 8 OF 24

FIGURE 3-1 OCTOBER 2019

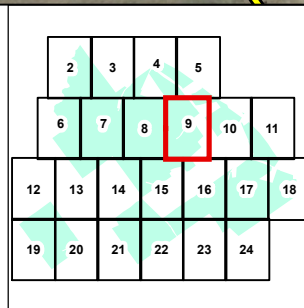
Map Produced by 



- Project Area
- Adjacent Parcels
- Proposed Facility Components**
- Buried Collector Line
- Fence
- Infiltration Trench
- PV Panel Array
- HDD Location
- Access Road
- Laydown Yard



Data: CanACRE, 2018
Base Map: NYS Office of Information Technology Services, GIS Program Office, 2017



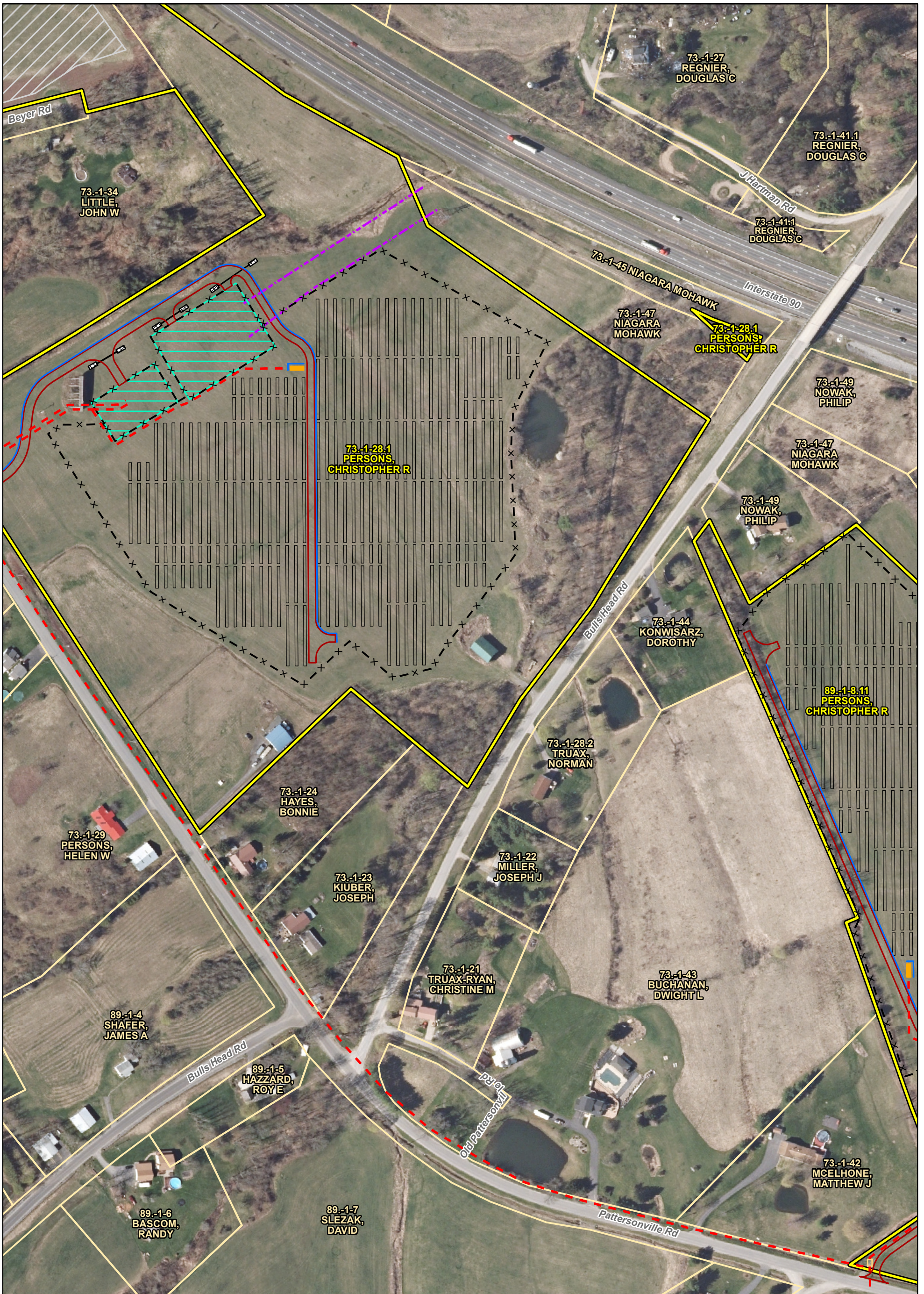
MAP LOCATION



PROJECT COMPONENT LOCATIONS
HIGH RIVER ENERGY CENTER, LLC
TOWN OF FLORIDA, NY
SHEET 9 OF 24

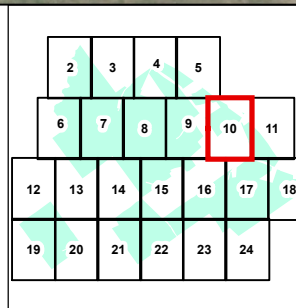
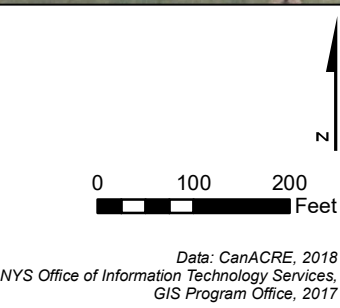
FIGURE 3-1 | OCTOBER 2019

Map Produced by TRC



- Project Area
- Adjacent Parcels
- Proposed Facility Components**
- Buried Collector Line
- Fence
- Infiltration Trench
- Interconnection Lines
- PV Panel Array
- Substation/Switchyard

- Inverter
- HDD Location
- Access Road
- Laydown Yard
- Storm Culvert
- Riprap





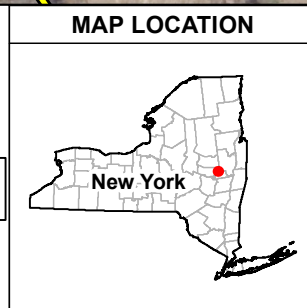
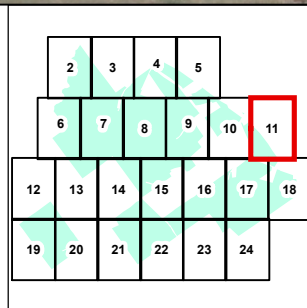
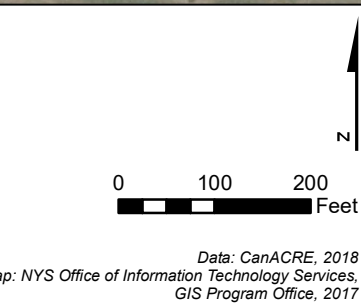
**PROJECT COMPONENT LOCATIONS
HIGH RIVER ENERGY CENTER, LLC
TOWN OF FLORIDA, NY
SHEET 10 OF 24**

FIGURE 3-1 OCTOBER 2019

Map Produced by 



- Project Area
- Adjacent Parcels
- Buried Collector Line
- Fence
- Infiltration Trench
- PV Panel Array
- Inverter
- Access Road



PROJECT COMPONENT LOCATIONS
HIGH RIVER ENERGY CENTER, LLC
TOWN OF FLORIDA, NY
SHEET 11 OF 24

FIGURE 3-1 OCTOBER 2019

Map Produced by



<p>Proposed Facility Components</p> <ul style="list-style-type: none"> X — Fence ▭ PV Panel Array ▭ Access Road 	<p>▭ Project Area</p> <p>▭ Adjacent Parcels</p> <p>▨ Laydown Yard</p> <p>0 100 200 Feet</p> <p><small>Data: CanACRE, 2018 Base Map: NYS Office of Information Technology Services, GIS Program Office, 2017</small></p>	<table border="1"> <tr><td>2</td><td>3</td><td>4</td><td>5</td></tr> <tr><td>6</td><td>7</td><td>8</td><td>9</td><td>10</td><td>11</td></tr> <tr><td>12</td><td>13</td><td>14</td><td>15</td><td>16</td><td>17</td><td>18</td></tr> <tr><td>19</td><td>20</td><td>21</td><td>22</td><td>23</td><td>24</td></tr> </table>	2	3	4	5	6	7	8	9	10	11	12	13	14	15	16	17	18	19	20	21	22	23	24	<p>MAP LOCATION</p>	<p>NEXTERA ENERGY RESOURCES</p> <p>PROJECT COMPONENT LOCATIONS HIGH RIVER ENERGY CENTER, LLC TOWN OF FLORIDA, NY SHEET 12 OF 24</p> <p>FIGURE 3-1 OCTOBER 2019</p> <p>Map Produced by TRC</p>
2	3	4	5																								
6	7	8	9	10	11																						
12	13	14	15	16	17	18																					
19	20	21	22	23	24																						