

**HIGH RIVER ENERGY PROJECT  
ARTICLE 10 EXHIBIT 24**

**SIMULATIONS AND LINES OF SIGHT**

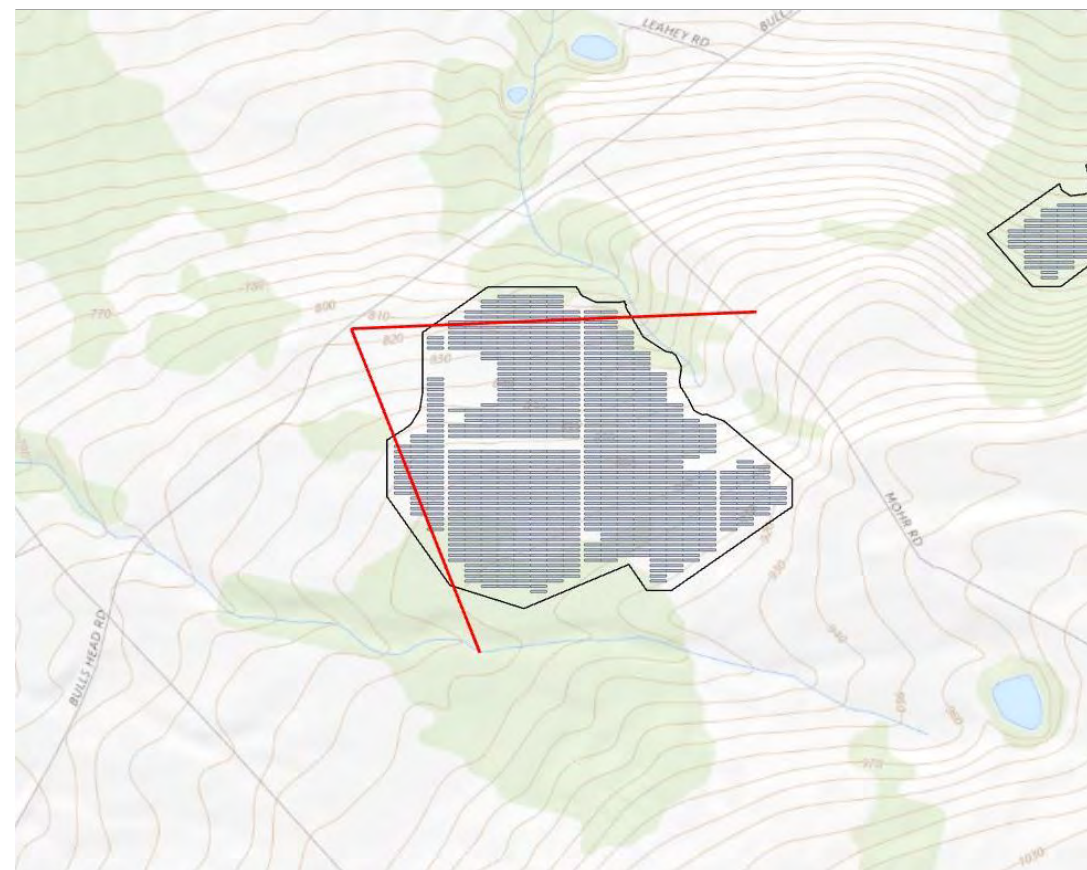
**ATTACHMENT 4**



Viewpoint Location Aerial



Viewpoint Location Topo



Note: Proposed mitigation not shown for clarity purposes.



Viewpoint Coordinates in	586187.4
NY State Plane East	1477778.3
Viewpoint Location	Bulls Head Rd
Viewer Elevation (ft msl)	816
Distance to Fenceline	380 feet
Direction of View	SE
Lens Setting	50 mm
Date/Time	4.23.2018/3:20 pm

High River Energy Center  
 Florida, New York  
 Visual Simulation of Project  
 August 2019

## Existing Conditions



## Simulations



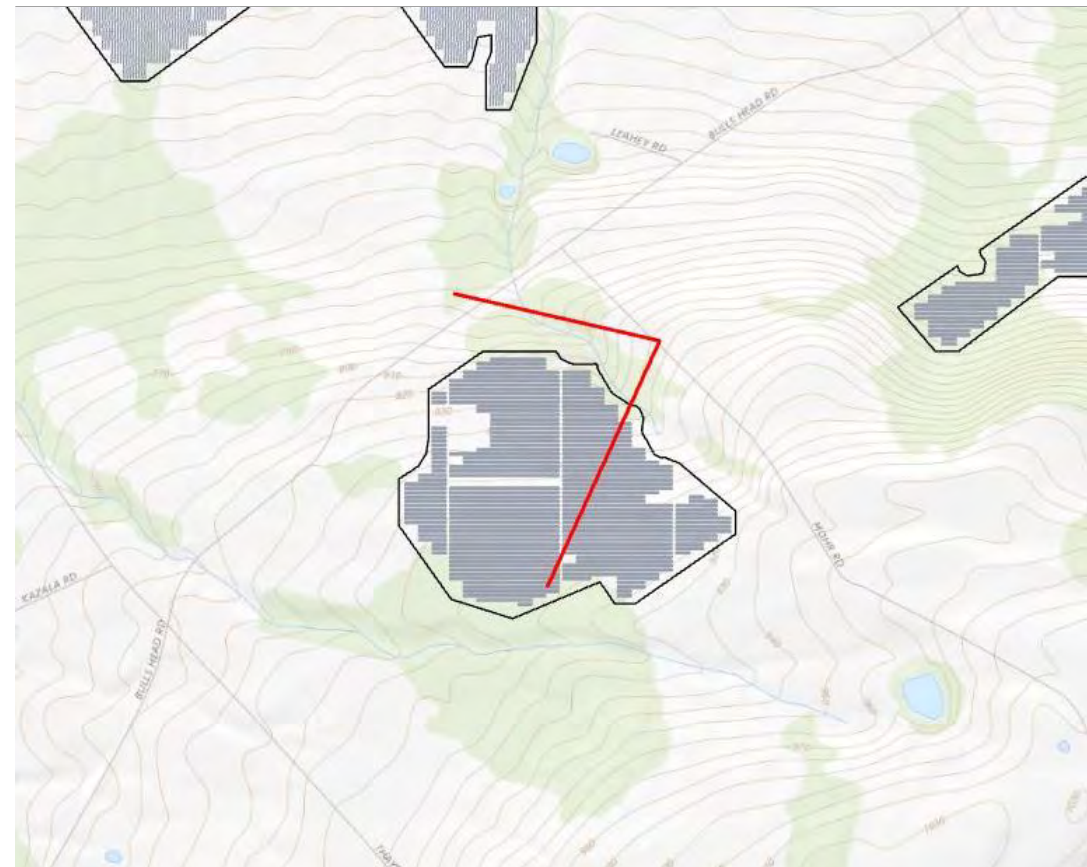
Representative Simulation





**Viewpoint Location Aerial**

**Viewpoint Location Topo**



<i>Viewpoint Coordinates in</i>	588060.9
<i>NY State Plane East</i>	1478067.2
<i>Viewpoint Location</i>	Mohr Rd
<i>Viewer Elevation (ft msl)</i>	833
<i>Distance to Fenceline</i>	437 ft
<i>Direction of View</i>	W
<i>Lens Setting</i>	50 mm
<i>Date/Time</i>	4.25.2018/12:05 pm

High River Energy Center  
 Florida, New York  
 Visual Simulation of Project  
 August 2019

Existing Conditions



Simulations



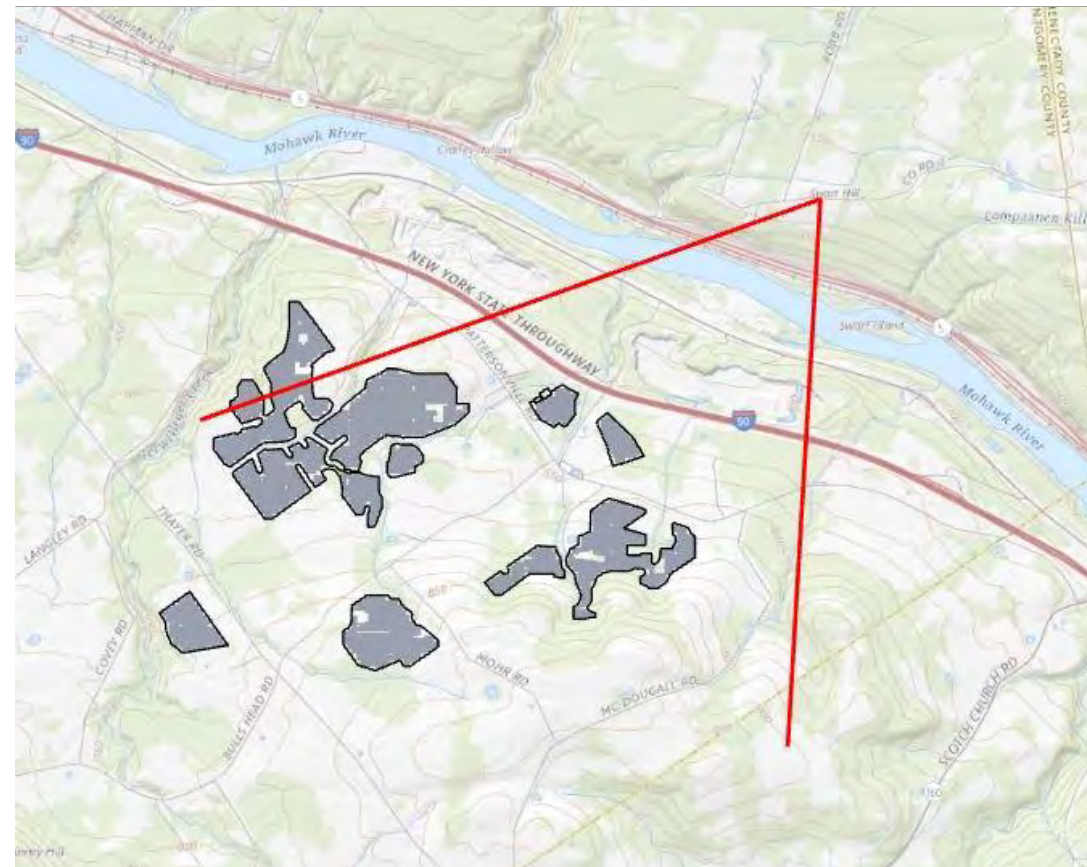
Representative Simulation





Viewpoint Location Aerial

Viewpoint Location Topo



Note: Proposed mitigation not shown for clarity purposes.



Viewpoint Coordinates in	597255.5
NY State Plane East	1487038.2
Viewpoint Location	Swart Hill Rd
Viewer Elevation (ft msl)	553
Distance to Fenceline	1.5 miles
Direction of View	SE
Lens Setting	50 mm
Date/Time	4.25.2018/2:55 pm

High River Energy Center  
 Florida, New York  
 Visual Simulation of Project  
 August 2019



Existing Conditions



Simulations



Representative Simulation

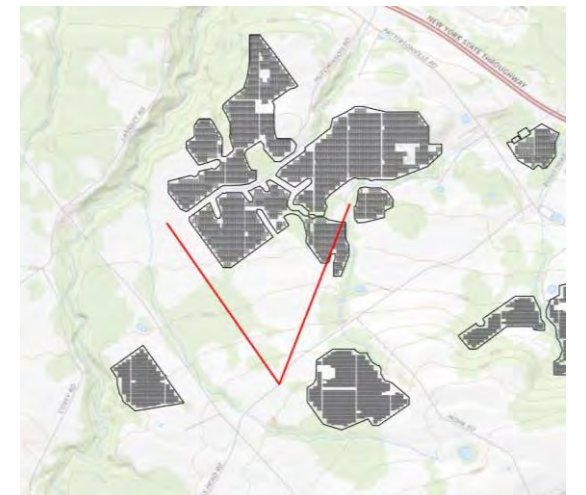




**Viewpoint Location Aerial**



**Viewpoint Location Topo**



<i>Viewpoint Coordinates in NY State Plane East</i>	585781.37 E 1477259.07 N
<i>Viewpoint Location</i>	Bulls Head Rd
<i>Viewer Elevation (ft msl)</i>	842
<i>Distance to Fenceline</i>	0.7 miles
<i>Direction of View</i>	North
<i>Lens Setting</i>	28 mm
<i>Date/Time</i>	1.8.2019/11:47am

High River Energy Center  
 Florida, New York  
 Visual Simulation of Project  
 August 2019

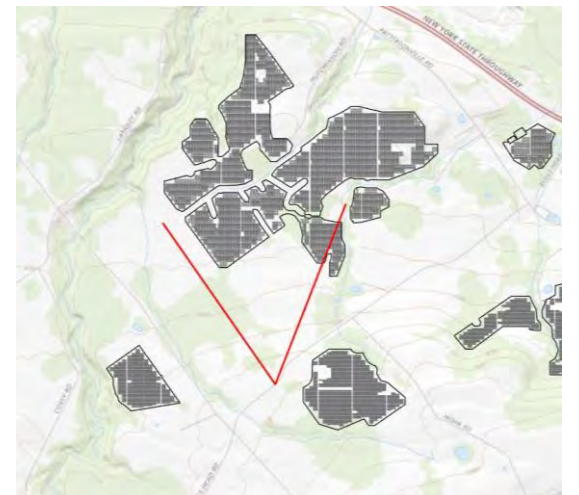




**Viewpoint Location Aerial**



**Viewpoint Location Topo**



<i>Viewpoint Coordinates in NY State Plane East</i>	585781.37 E 1477259.07 N
<i>Viewpoint Location</i>	Bulls Head Rd
<i>Viewer Elevation (ft msl)</i>	842
<i>Distance to Fenceline</i>	0.7 miles
<i>Direction of View</i>	North
<i>Lens Setting</i>	28 mm
<i>Date/Time</i>	1.8.2019/11:47am

High River Energy Center  
 Florida, New York  
 Visual Simulation of Project  
 August 2019

Note: Proposed mitigation not shown for clarity purposes.

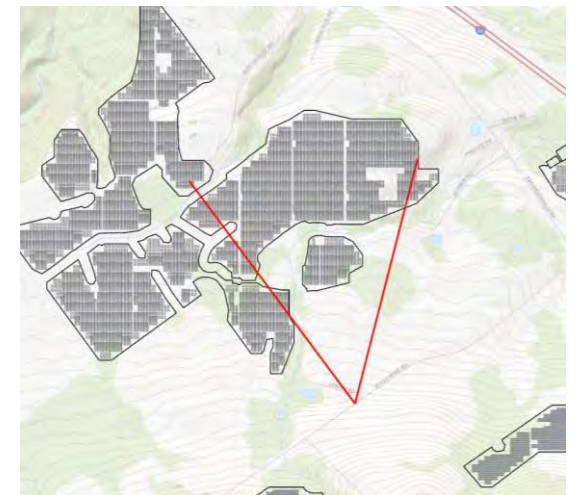




**Viewpoint Location Aerial**



**Viewpoint Location Topo**



<i>Viewpoint Coordinates in NY State Plane East</i>	588098.56 1479149.98
<i>Viewpoint Location</i>	Bulls Head Rd
<i>Viewer Elevation (ft msl)</i>	712
<i>Distance to Fenceline</i>	0.3 miles
<i>Direction of View</i>	North
<i>Lens Setting</i>	28 mm
<i>Date/Time</i>	1.8.2019/12:05pm

High River Energy Center  
 Florida, New York  
 Visual Simulation of Project  
 August 2019

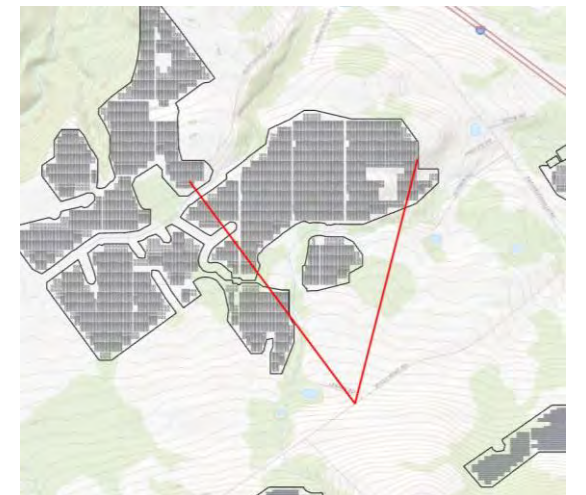




**Viewpoint Location Aerial**



**Viewpoint Location Topo**



<i>Viewpoint Coordinates in NY State Plane East</i>	588098.56 1479149.98
<i>Viewpoint Location</i>	Bulls Head Rd
<i>Viewer Elevation (ft msl)</i>	712
<i>Distance to Fenceline</i>	0.3 miles
<i>Direction of View</i>	North
<i>Lens Setting</i>	28 mm
<i>Date/Time</i>	1.8.2019/12:05pm

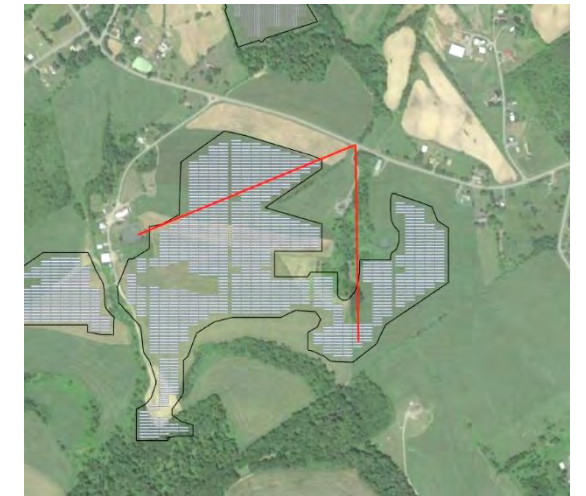
High River Energy Center  
 Florida, New York  
 Visual Simulation of Project  
 August 2019

Note: Proposed mitigation not shown for clarity purposes.





**Viewpoint Location Aerial**



**Viewpoint Location Topo**



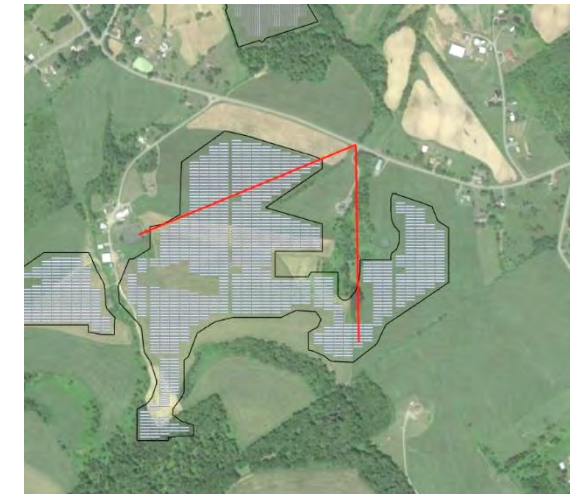
<i>Viewpoint Coordinates in</i>	593573.9
<i>NY State Plane East</i>	1480087.6
<i>Viewpoint Location</i>	Pattersonville Rd
<i>Viewer Elevation (ft msl)</i>	602
<i>Distance to Fenceline</i>	0.2 miles
<i>Direction of View</i>	SW
<i>Lens Setting</i>	28 mm
<i>Date/Time</i>	1.8.2019/12:16pm

High River Energy Center  
 Florida, New York  
 Visual Simulation of Project  
 August 2019

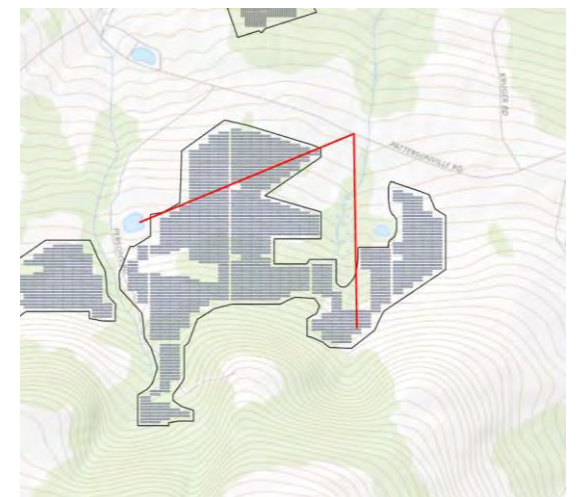




**Viewpoint Location Aerial**



**Viewpoint Location Topo**



<i>Viewpoint Coordinates in</i>	593573.9
<i>NY State Plane East</i>	1480087.6
<i>Viewpoint Location</i>	Pattersonville Rd
<i>Viewer Elevation (ft msl)</i>	602
<i>Distance to Fenceline</i>	0.2 miles
<i>Direction of View</i>	SW
<i>Lens Setting</i>	28 mm
<i>Date/Time</i>	1.8.2019/12:16pm

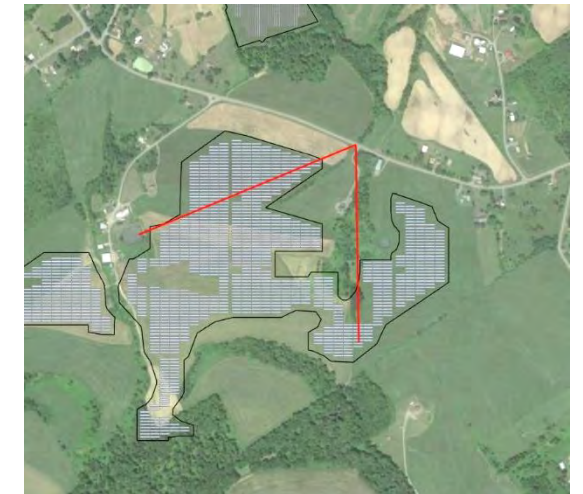
High River Energy Center  
 Florida, New York  
 Visual Simulation of Project  
 August 2019



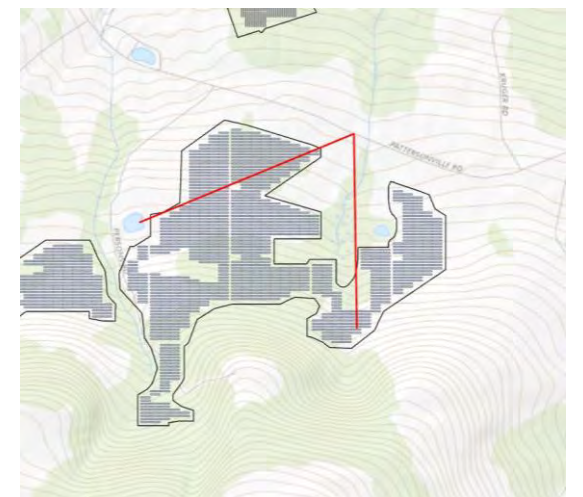




**Viewpoint Location Aerial**



**Viewpoint Location Topo**



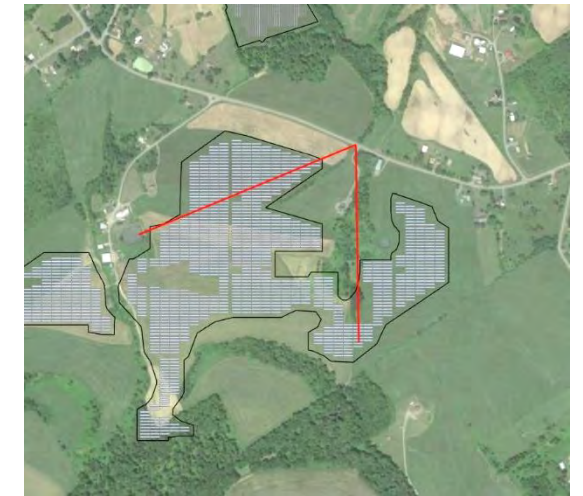
<i>Viewpoint Coordinates in</i>	593573.9
<i>NY State Plane East</i>	1480087.6
<i>Viewpoint Location</i>	Pattersonville Rd
<i>Viewer Elevation (ft msl)</i>	602
<i>Distance to Fenceline</i>	0.2 miles
<i>Direction of View</i>	SW
<i>Lens Setting</i>	28 mm
<i>Date/Time</i>	1.8.2019/12:16pm

High River Energy Center  
 Florida, New York  
 Visual Simulation of Project  
 August 2019





**Viewpoint Location Aerial**



**Viewpoint Location Topo**



<i>Viewpoint Coordinates in</i>	593573.9
<i>NY State Plane East</i>	1480087.6
<i>Viewpoint Location</i>	Pattersonville Rd
<i>Viewer Elevation (ft msl)</i>	602
<i>Distance to Fenceline</i>	0.2 miles
<i>Direction of View</i>	SW
<i>Lens Setting</i>	28 mm
<i>Date/Time</i>	1.8.2019/12:16pm

High River Energy Center  
 Florida, New York  
 Visual Simulation of Project  
 August 2019





**Viewpoint Location Aerial**



**Viewpoint Location Topo**



<i>Viewpoint Coordinates in</i>	583159.6
<i>NY State Plane East</i>	1478548.5
<i>Viewpoint Location</i>	Thayer Rd
<i>Viewer Elevation (ft msl)</i>	699
<i>Distance to Fenceline</i>	648
<i>Direction of View</i>	S
<i>Lens Setting</i>	28 mm
<i>Date/Time</i>	6.14.2019/2:07 pm

High River Energy Center  
 Florida, New York  
 Visual Simulation of Project  
 August 2019





**Viewpoint Location Aerial**



**Viewpoint Location Topo**



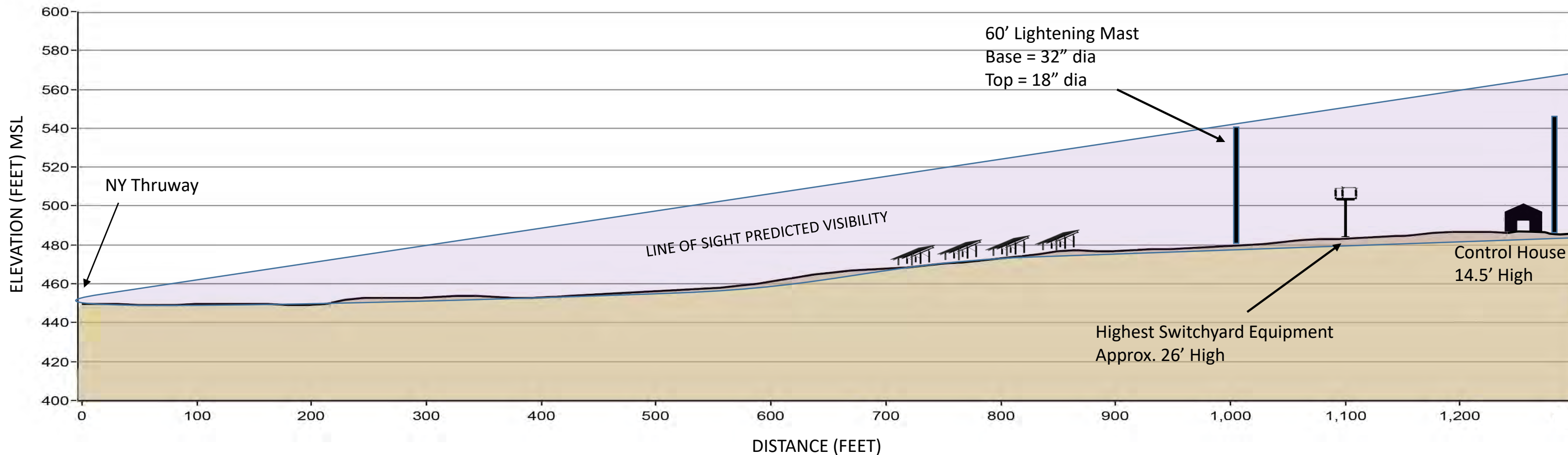
<i>Viewpoint Coordinates in</i>	583159.6
<i>NY State Plane East</i>	1478548.5
<i>Viewpoint Location</i>	Thayer Rd
<i>Viewer Elevation (ft msl)</i>	699
<i>Distance to Fenceline</i>	648
<i>Direction of View</i>	S
<i>Lens Setting</i>	28 mm
<i>Date/Time</i>	6.14.2019/2:07 pm

High River Energy Center  
 Florida, New York  
 Visual Simulation of Project  
 August 2019

Note: Proposed mitigation not shown for clarity purposes.



L1 - LINE OF SIGHT FROM THRUWAY TO COLLECTOR STATION



Viewpoint Location Aerial



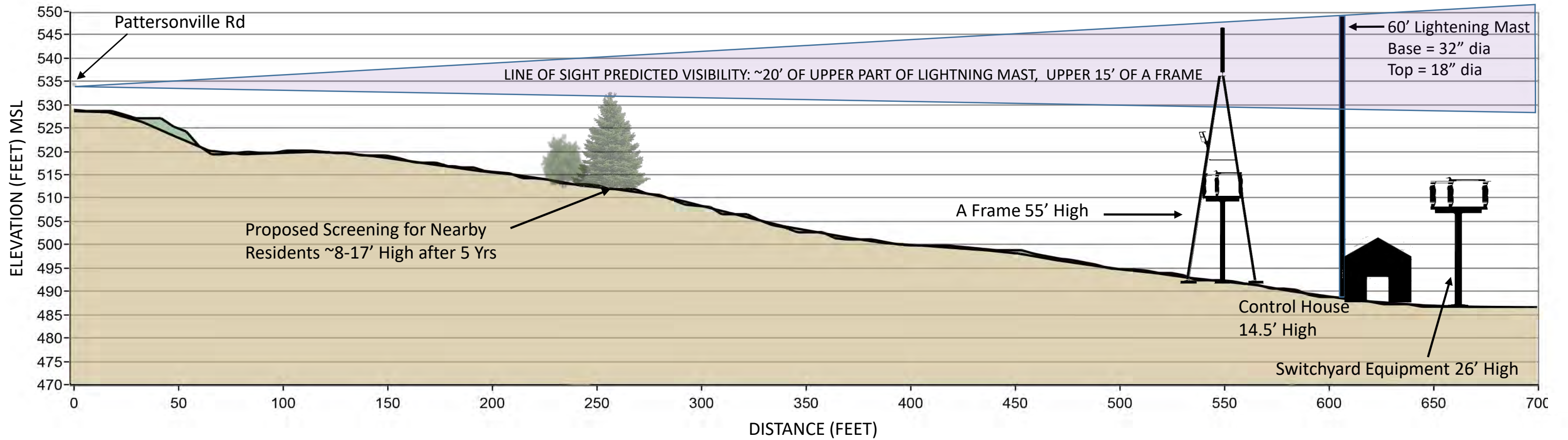
Viewpoint Location Topo



Viewpoint Coordinates in	592096.1
NY State Plane East	1482833.9
Viewpoint Location	NY Thruway
Distance to Object	710 ft
Direction of View	W

High River Energy Center  
Florida, New York  
Line of Sight  
September 2019

L2 - LINE OF SIGHT FROM PATTERSONVILLE ROAD TO COLLECTOR STATION



Viewpoint Location Aerial



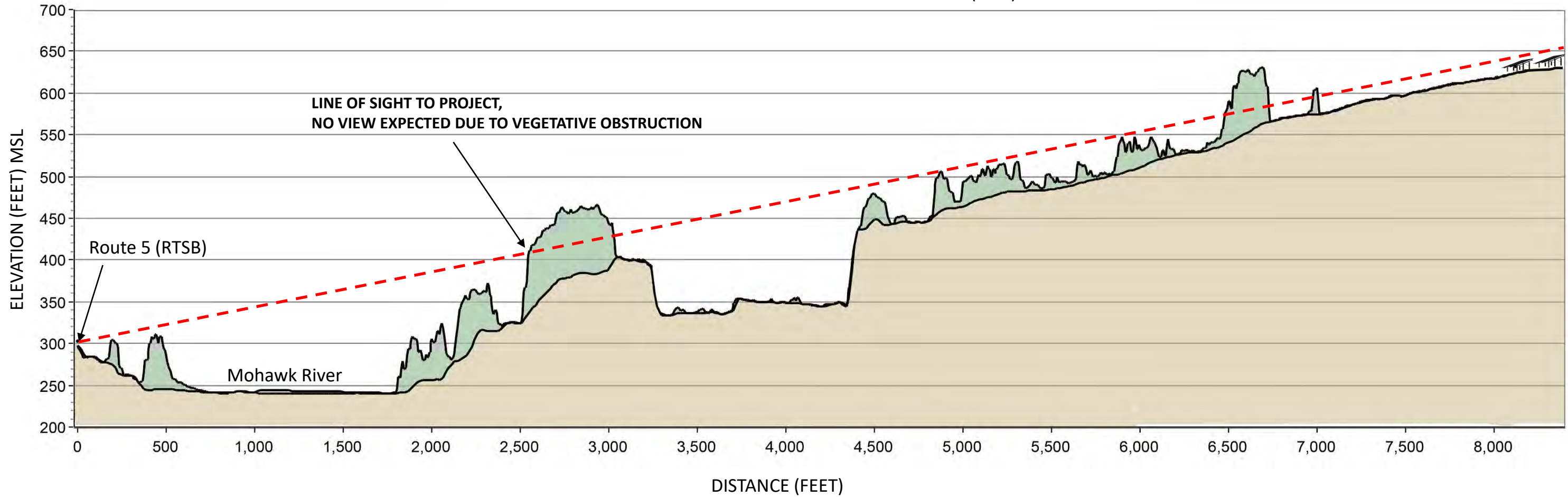
Viewpoint Location Topo



Viewpoint Coordinates in	590563.6
NY State Plane East	1482025.4
Viewpoint Location	Pattersonville Rd.
Distance to Object	~480 ft
Direction of View	NE

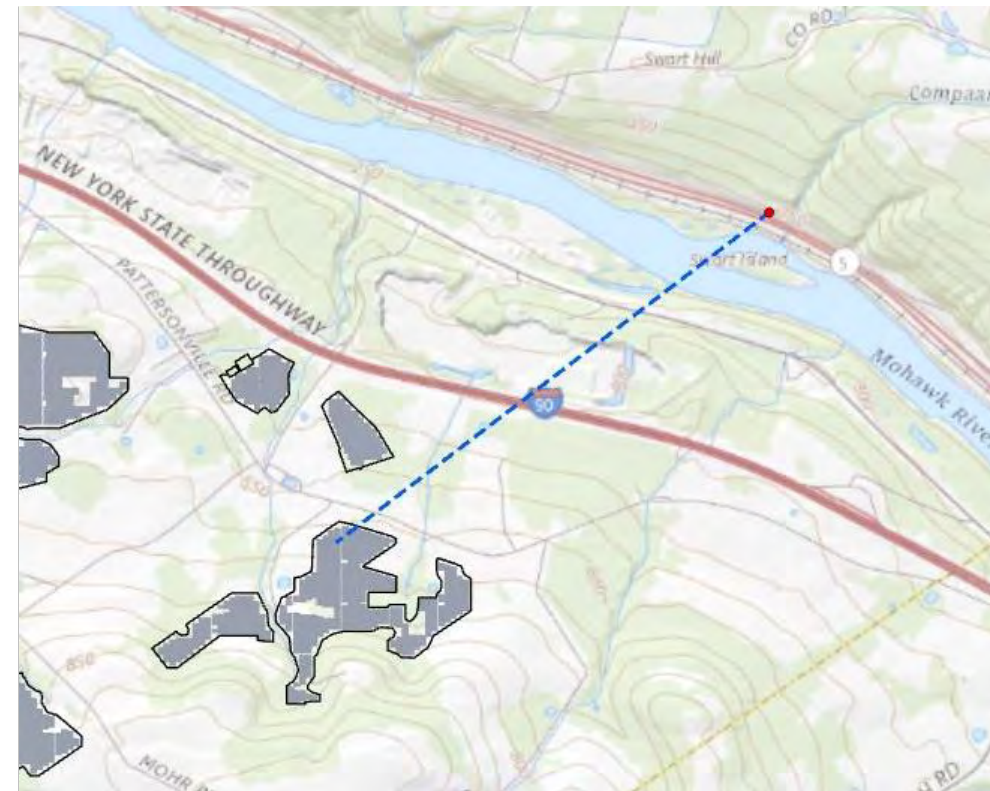
High River Energy Center  
 Florida, New York  
 Line of Sight  
 September 2019

L3- LINE OF SIGHT FROM REVOLUTIONARY TRAIL SCENIC BYWAY (RT 5) TO SOLAR ARRAY



Viewpoint Location Aerial

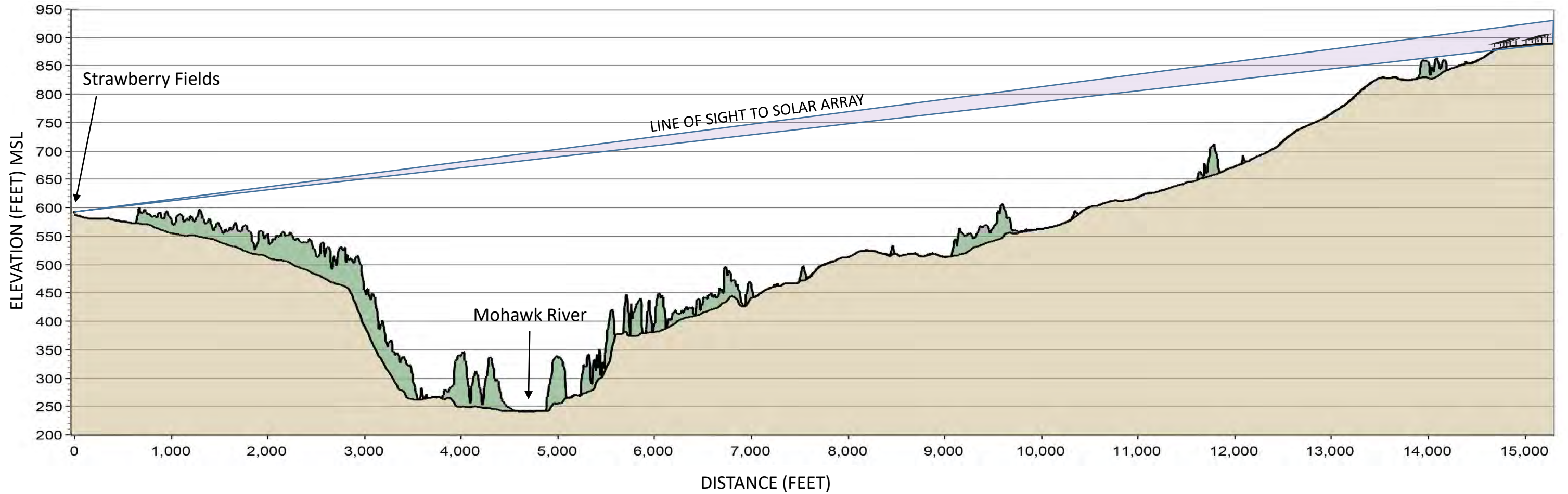
Viewpoint Location Topo



Viewpoint Coordinates in	598891.7
NY State Plane East	1484859.9
Viewpoint Location	Route 5N
Distance to Object	1.5 miles
Direction of View	SW

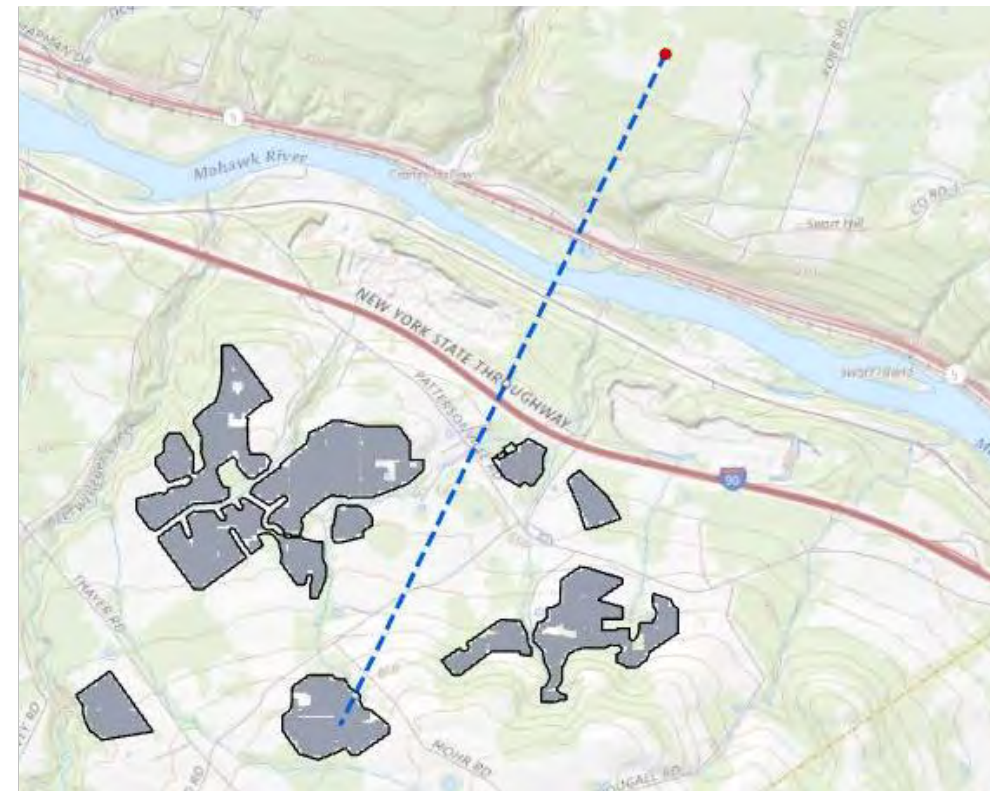
High River Energy Center  
Florida, New York  
Line of Sight  
September 2019

L4- LINE OF SIGHT FROM STRAWBERRY FIELDS NATURE PRESERVE VALLEY VIEW TRAIL TO SOLAR ARRAY



Viewpoint Location Aerial

Viewpoint Location Topo

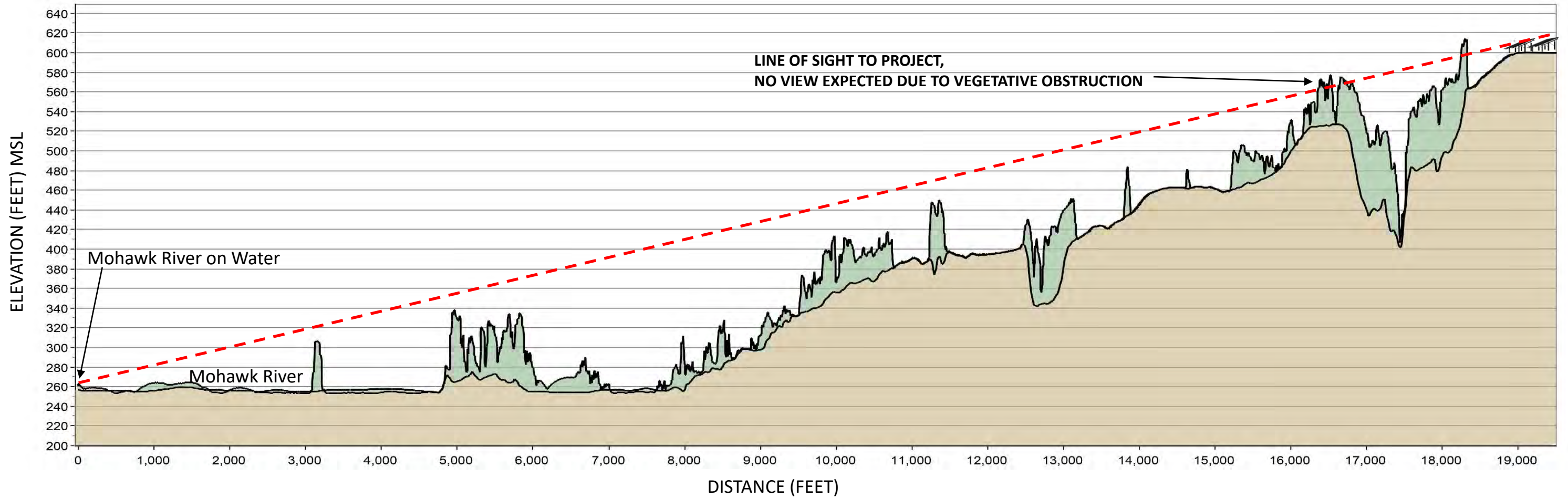


Viewpoint Coordinates in	593227.2
NY State Plane East	1490701
Viewpoint Location	Strawberry Fields Prsv
Distance to Object	2.8 miles
Direction of View	SW

High River Energy Center  
 Florida, New York  
 Line of Sight  
 September 2019

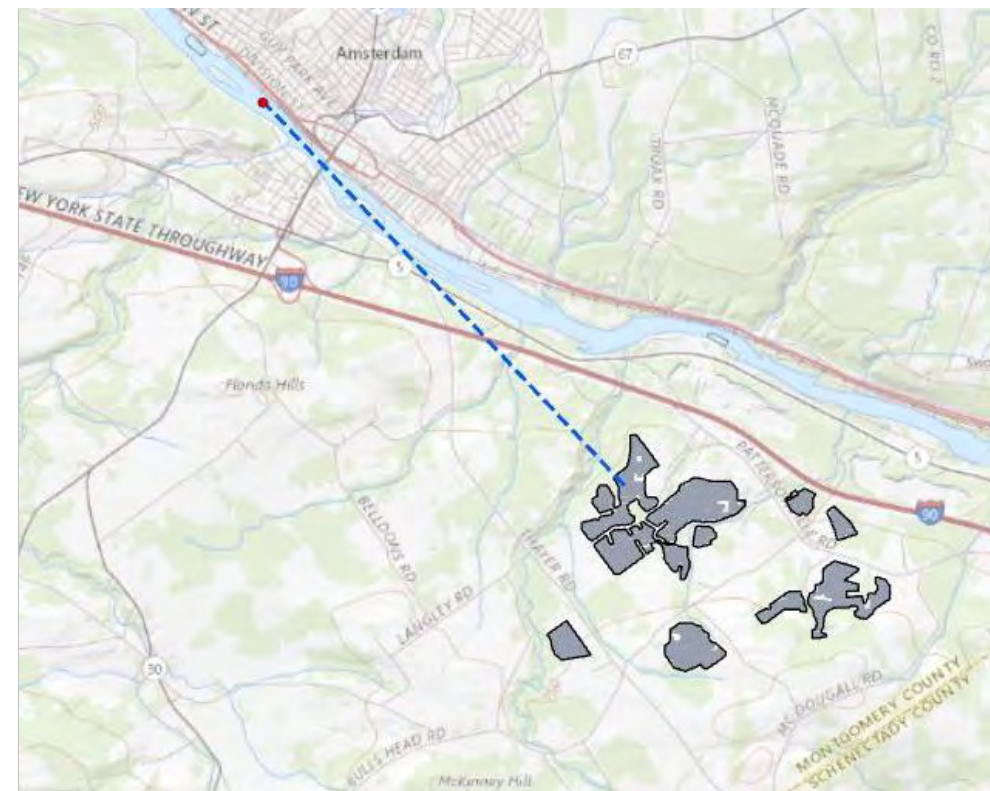


L5- LINE OF SIGHT FROM MOHAWK RIVER NEAR CITY OF AMSTERDAM TO SOLAR ARRAY



Viewpoint Location Aerial

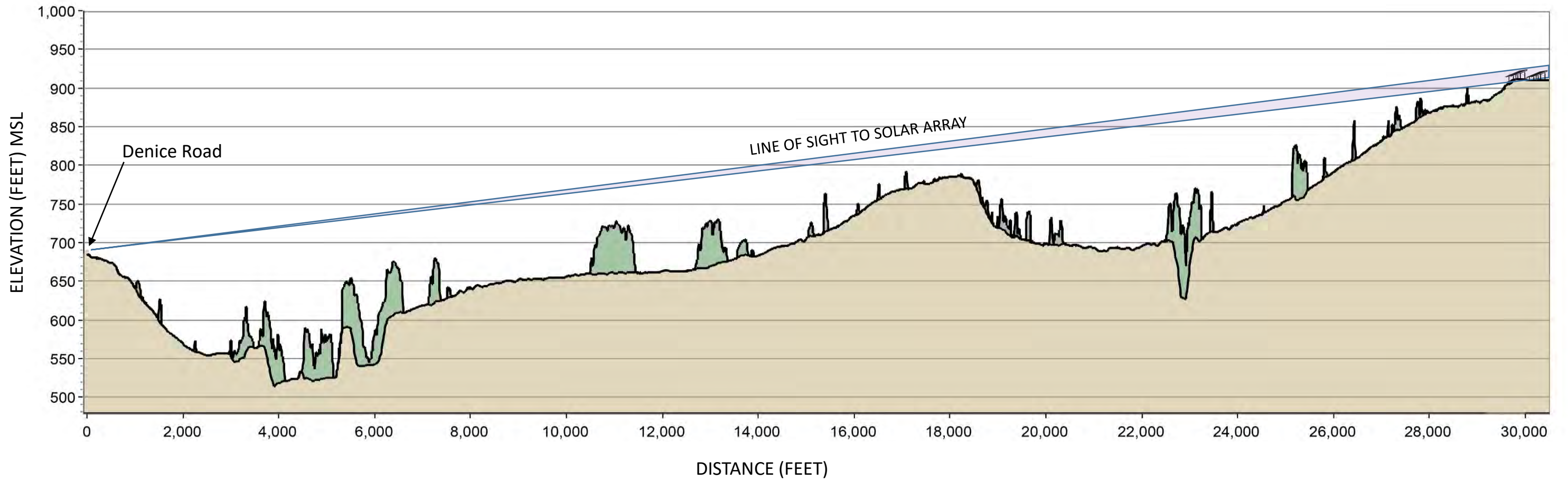
Viewpoint Location Topo



Viewpoint Coordinates in	572064.9
NY State Plane East	1496546.1
Viewpoint Location	Mohawk River
Distance to Object	3.6 miles
Direction of View	SE

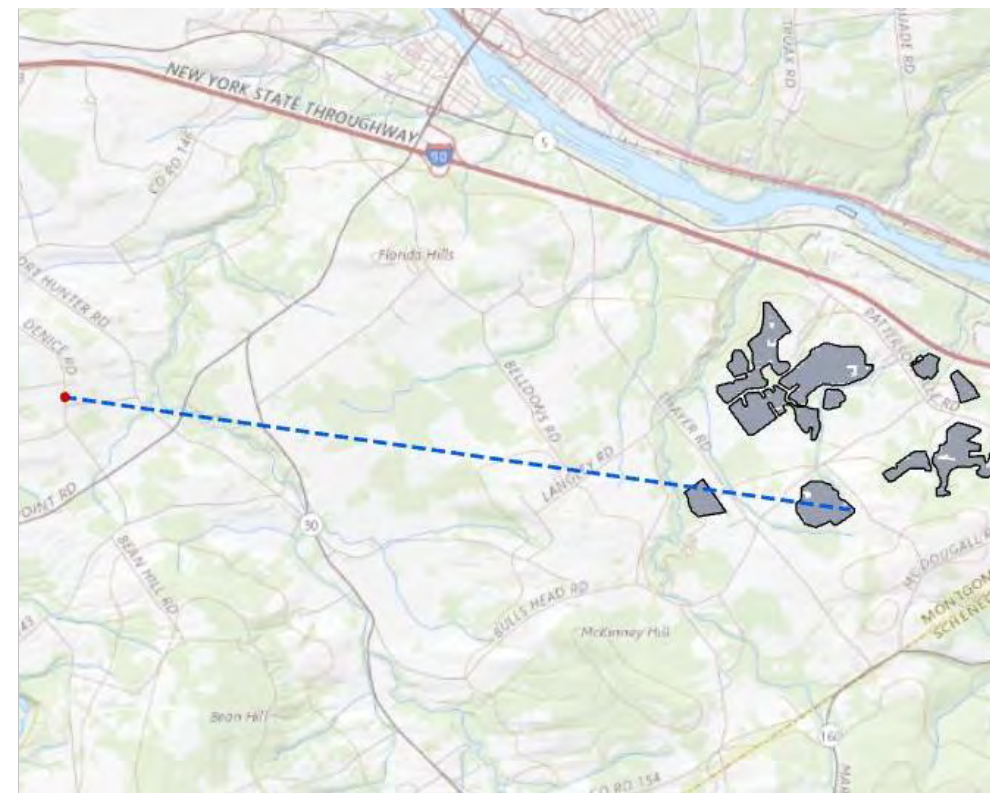
High River Energy Center  
 Florida, New York  
 Line of Sight  
 September 2019

L6- LINE OF SIGHT FROM DENICE ROAD TO SOLAR ARRAY



Viewpoint Location Aerial

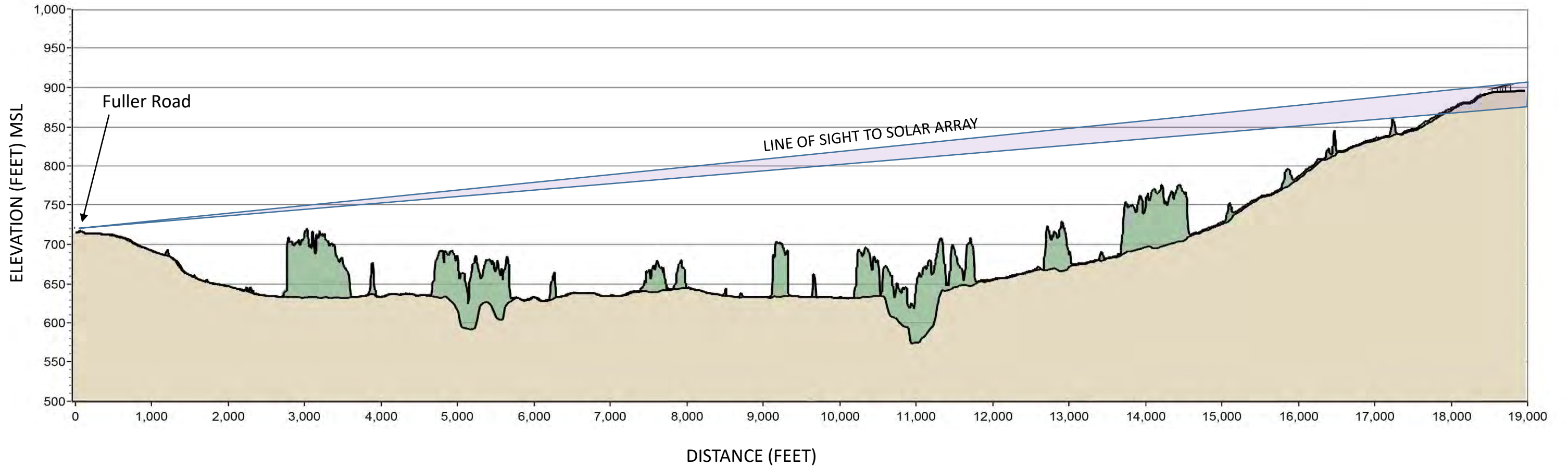
Viewpoint Location Topo



Viewpoint Coordinates in	558984.8
NY State Plane East	1481162.4
Viewpoint Location	Denice Rd
Distance to Object	5.6 miles
Direction of View	E

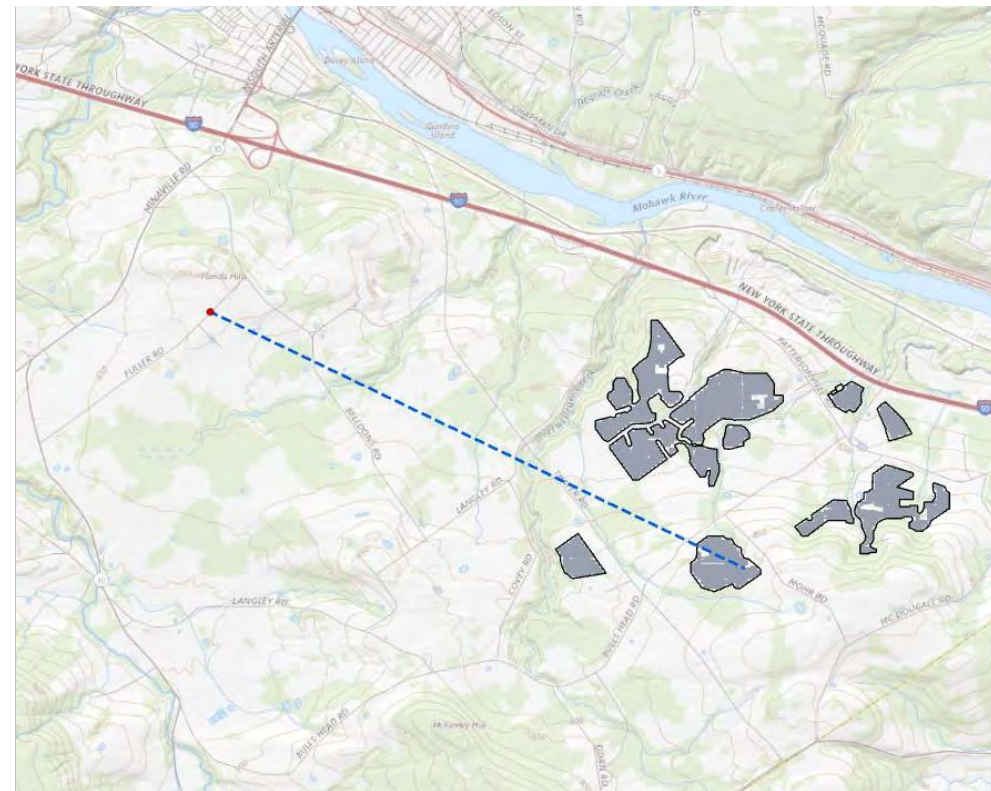
High River Energy Center  
 Florida, New York  
 Line of Sight  
 September 2019

L7- LINE OF SIGHT FROM FULLER ROAD TO SOLAR ARRAY



Viewpoint Location Aerial

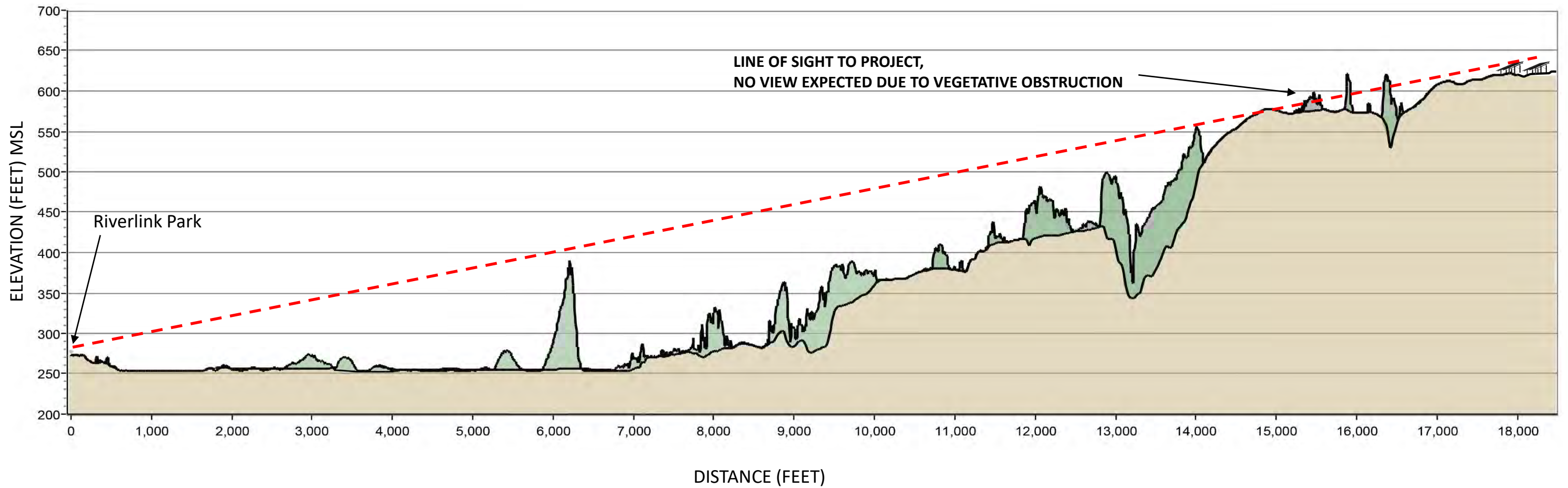
Viewpoint Location Topo



Viewpoint Coordinates in	571478
NY State Plane East	1484957.6
Viewpoint Location	Fuller Rd
Distance to Object	3.5 miles
Direction of View	SE

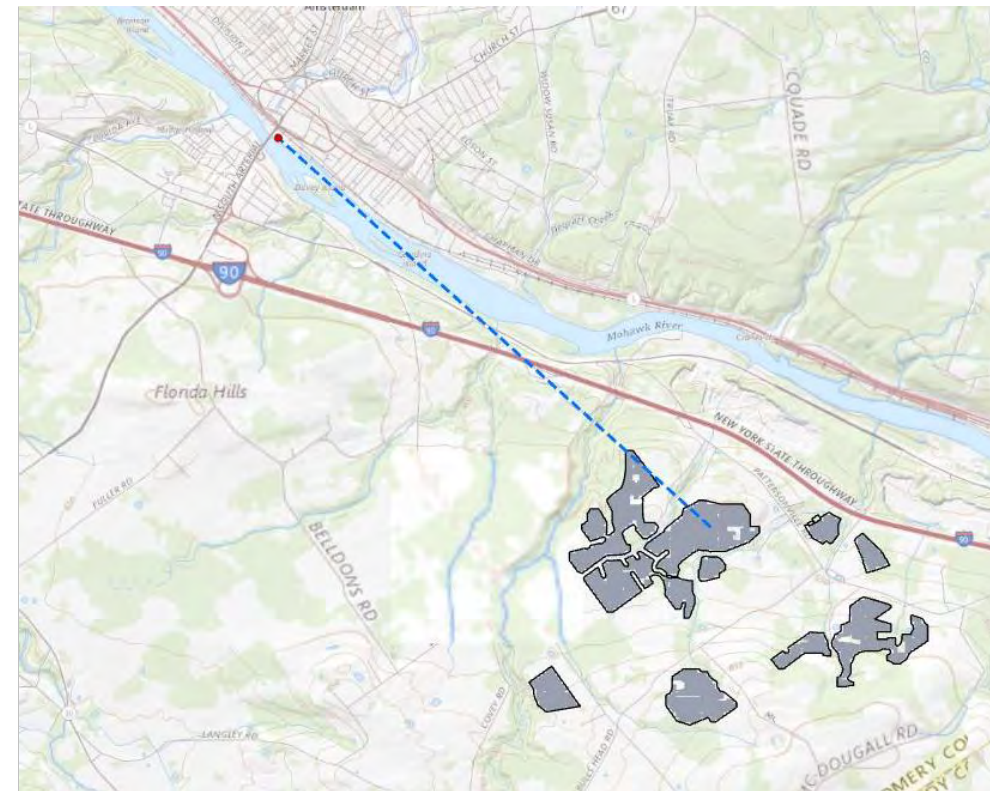
High River Energy Center  
 Florida, New York  
 Line of Sight  
 September 2019

L8- LINE OF SIGHT FROM RIVERLINK PARK TO SOLAR ARRAY



Viewpoint Location Aerial

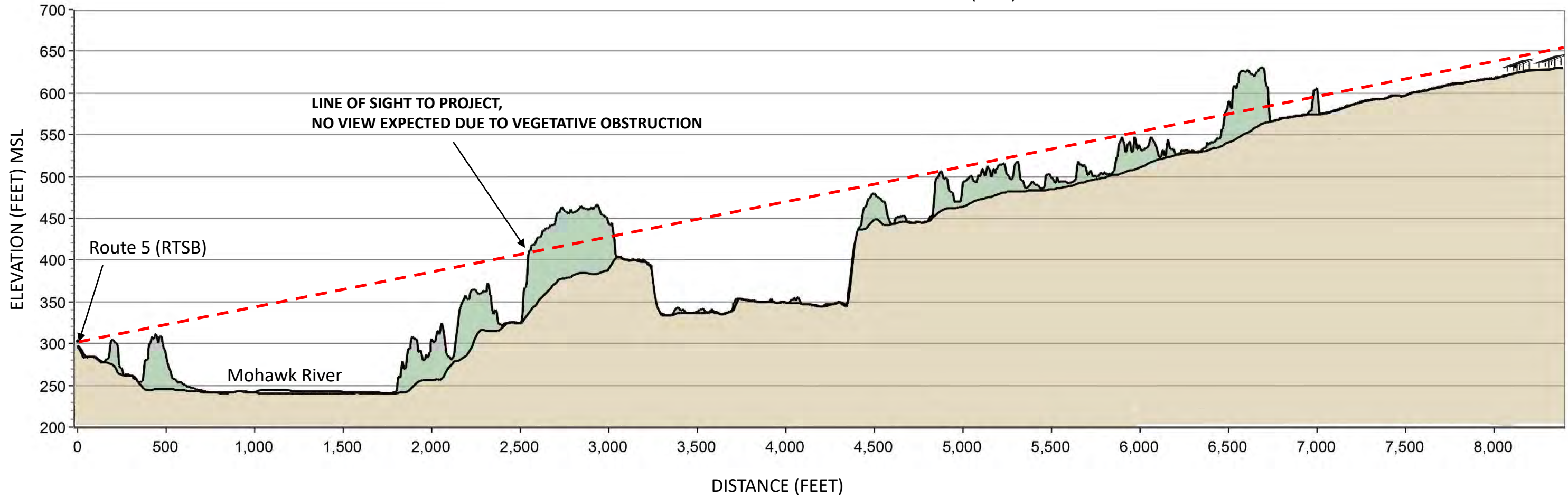
Viewpoint Location Topo



Viewpoint Coordinates in	574506.4
NY State Plane East	1494277.3
Viewpoint Location	Riverlink Park,
Distance to Object	3.4 miles
Direction of View	SE

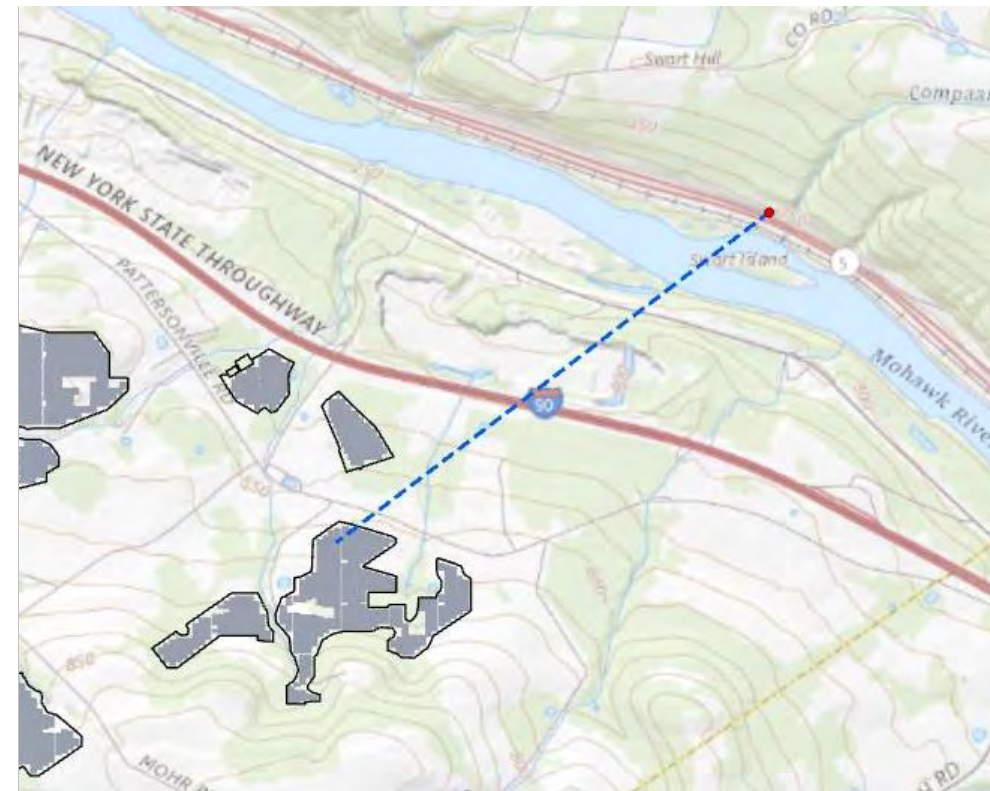
High River Energy Center  
 Florida, New York  
 Line of Sight  
 September 2019

L3- LINE OF SIGHT FROM REVOLUTIONARY TRAIL SCENIC BYWAY (RT 5) TO SOLAR ARRAY



Viewpoint Location Aerial

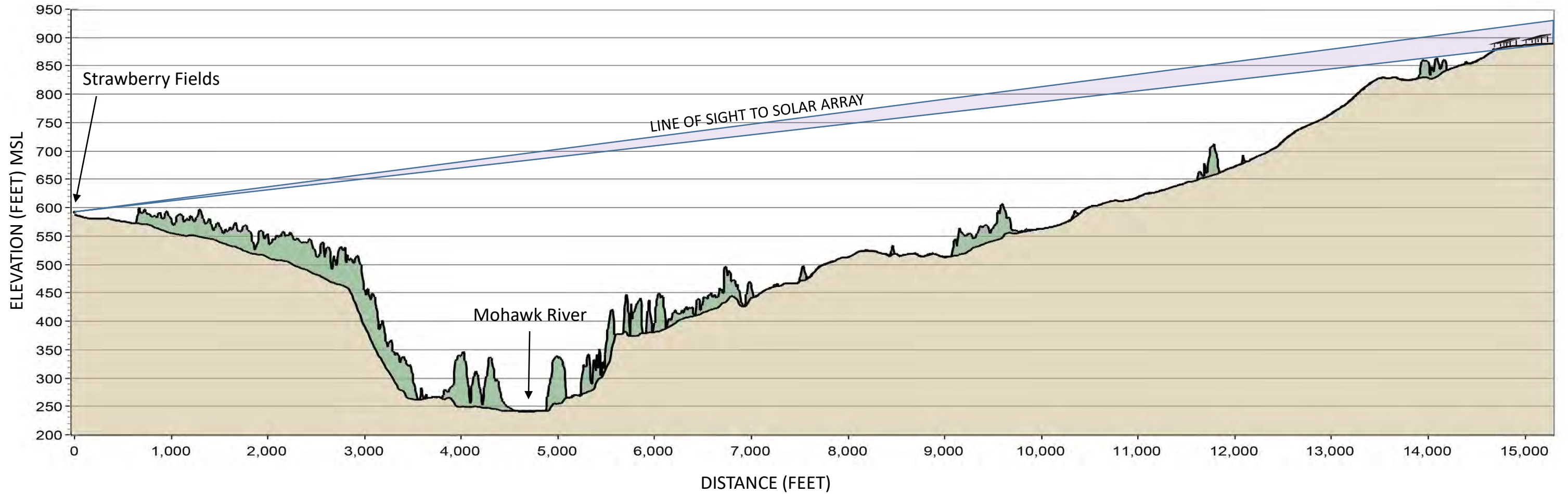
Viewpoint Location Topo



Viewpoint Coordinates in	598891.7
NY State Plane East	1484859.9
Viewpoint Location	Route 5N
Distance to Object	1.5 miles
Direction of View	SW

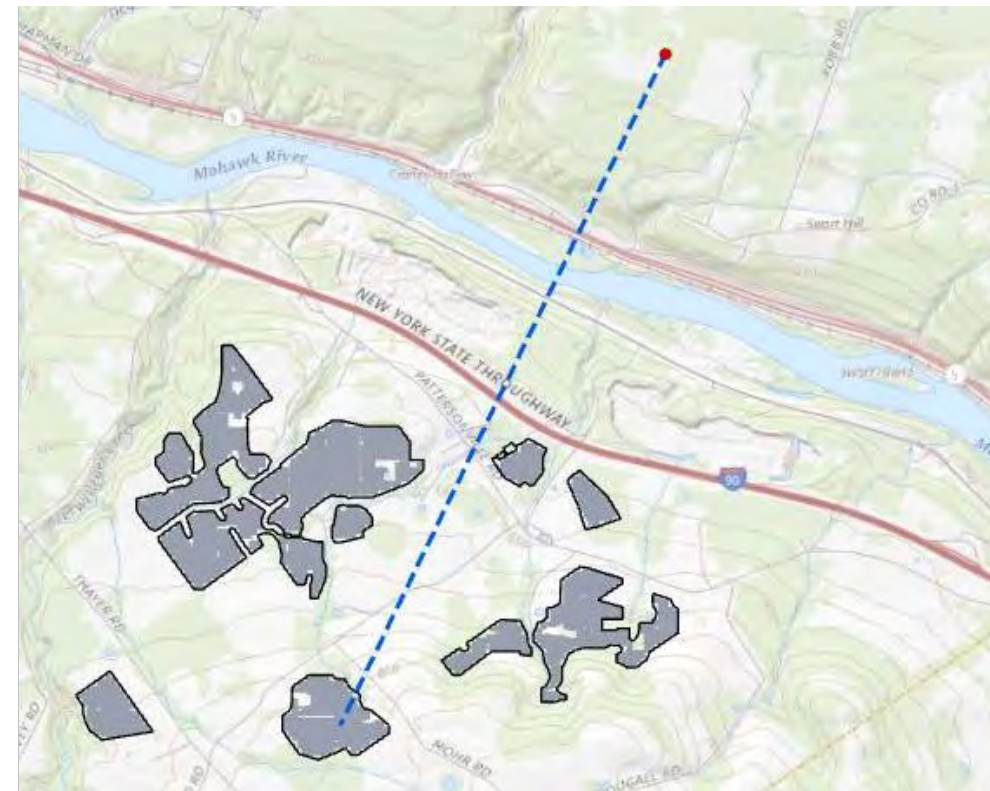
High River Energy Center  
 Florida, New York  
 Line of Sight  
 September 2019

L4- LINE OF SIGHT FROM STRAWBERRY FIELDS NATURE PRESERVE VALLEY VIEW TRAIL TO SOLAR ARRAY



Viewpoint Location Aerial

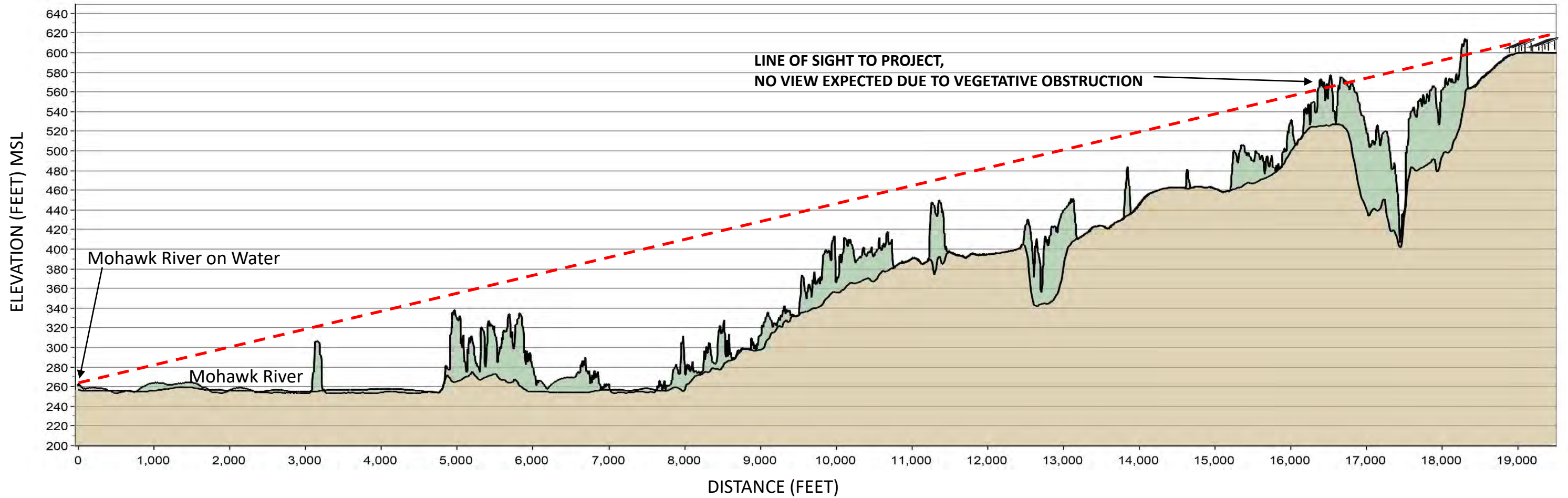
Viewpoint Location Topo



Viewpoint Coordinates in	593227.2
NY State Plane East	1490701
Viewpoint Location	Strawberry Fields Prsv
Distance to Object	2.8 miles
Direction of View	SW

High River Energy Center  
 Florida, New York  
 Line of Sight  
 September 2019

L5- LINE OF SIGHT FROM MOHAWK RIVER NEAR CITY OF AMSTERDAM TO SOLAR ARRAY



Viewpoint Location Aerial

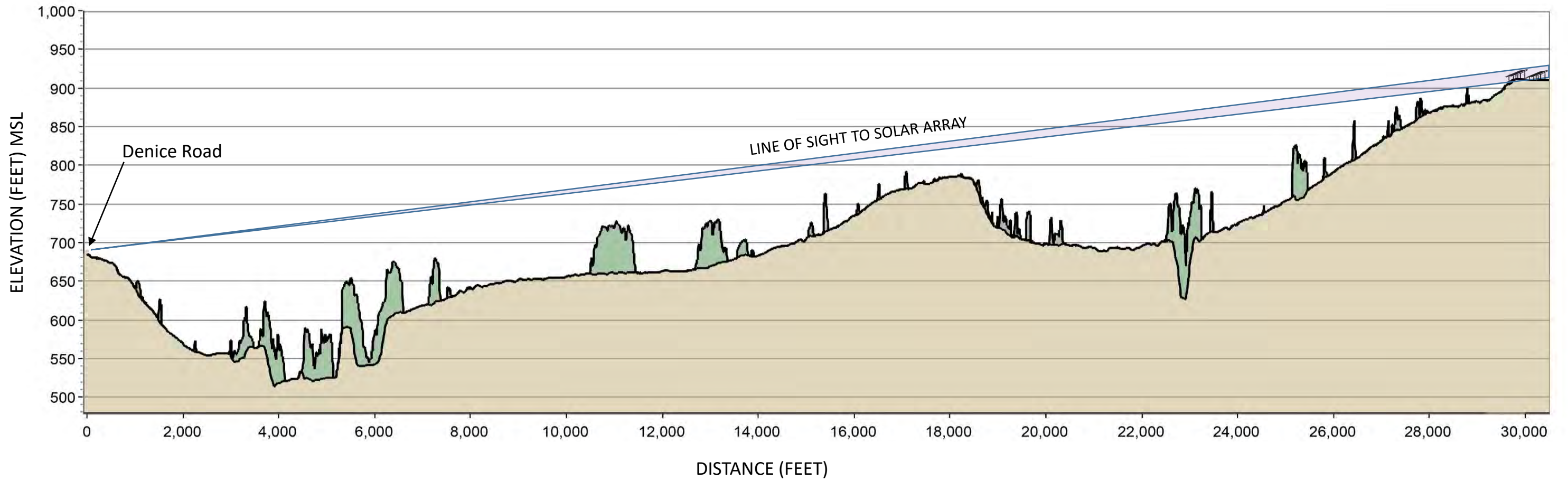
Viewpoint Location Topo



Viewpoint Coordinates in	572064.9
NY State Plane East	1496546.1
Viewpoint Location	Mohawk River
Distance to Object	3.6 miles
Direction of View	SE

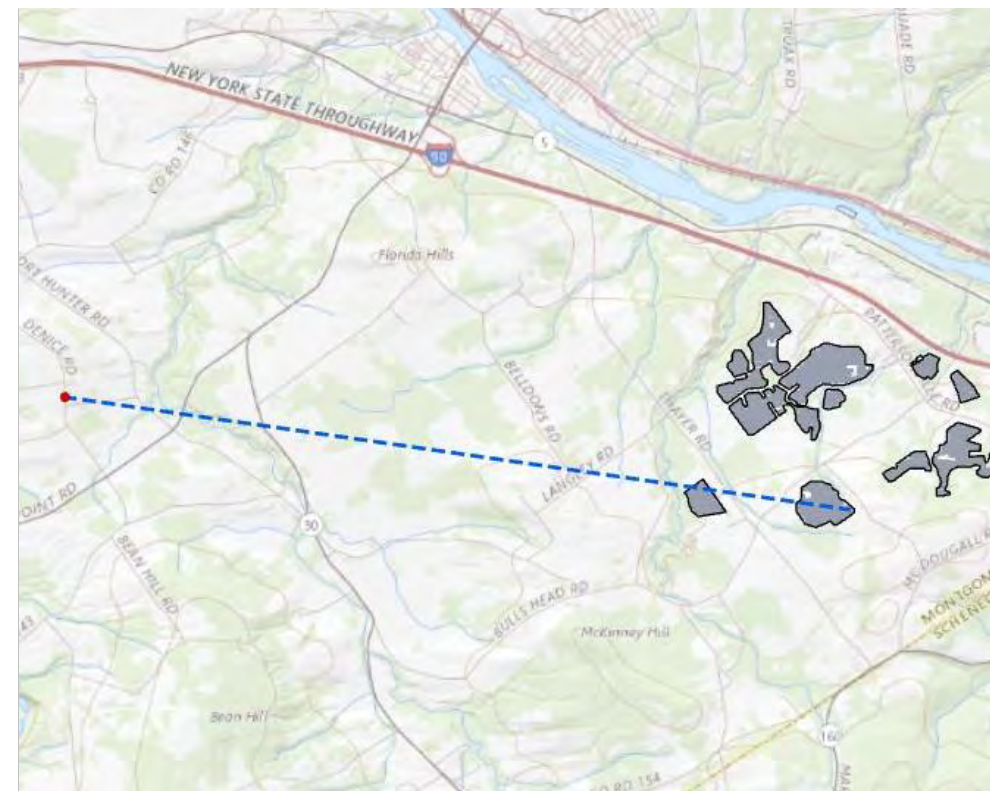
High River Energy Center  
 Florida, New York  
 Line of Sight  
 September 2019

L6- LINE OF SIGHT FROM DENICE ROAD TO SOLAR ARRAY



Viewpoint Location Aerial

Viewpoint Location Topo

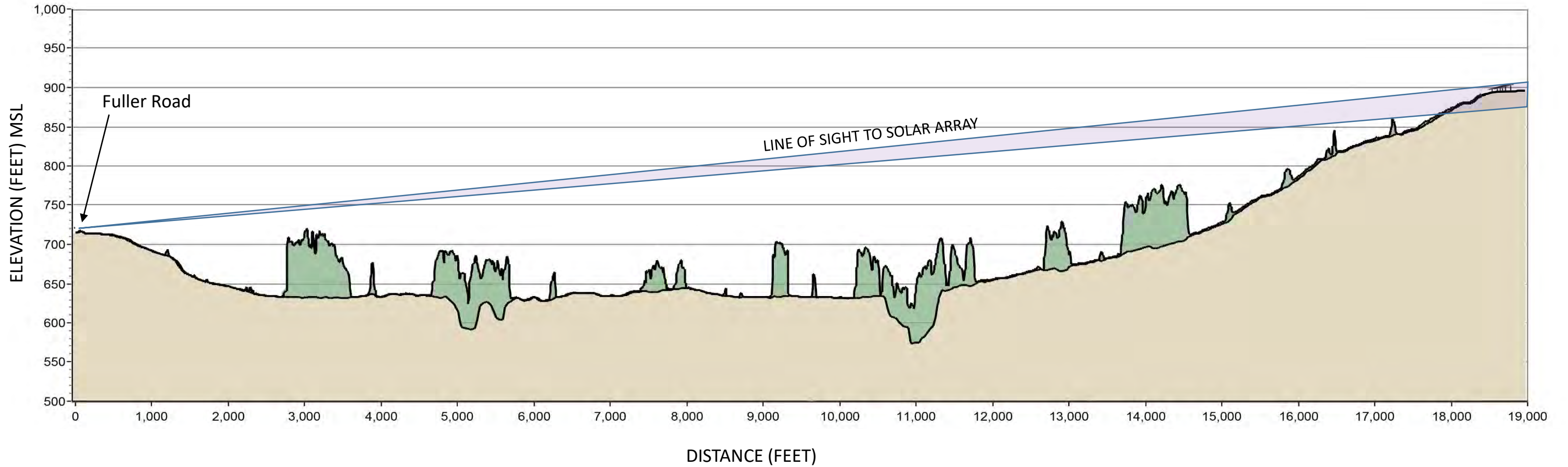


Viewpoint Coordinates in	558984.8
NY State Plane East	1481162.4
Viewpoint Location	Denice Rd
Distance to Object	5.6 miles
Direction of View	E

High River Energy Center  
 Florida, New York  
 Line of Sight  
 September 2019

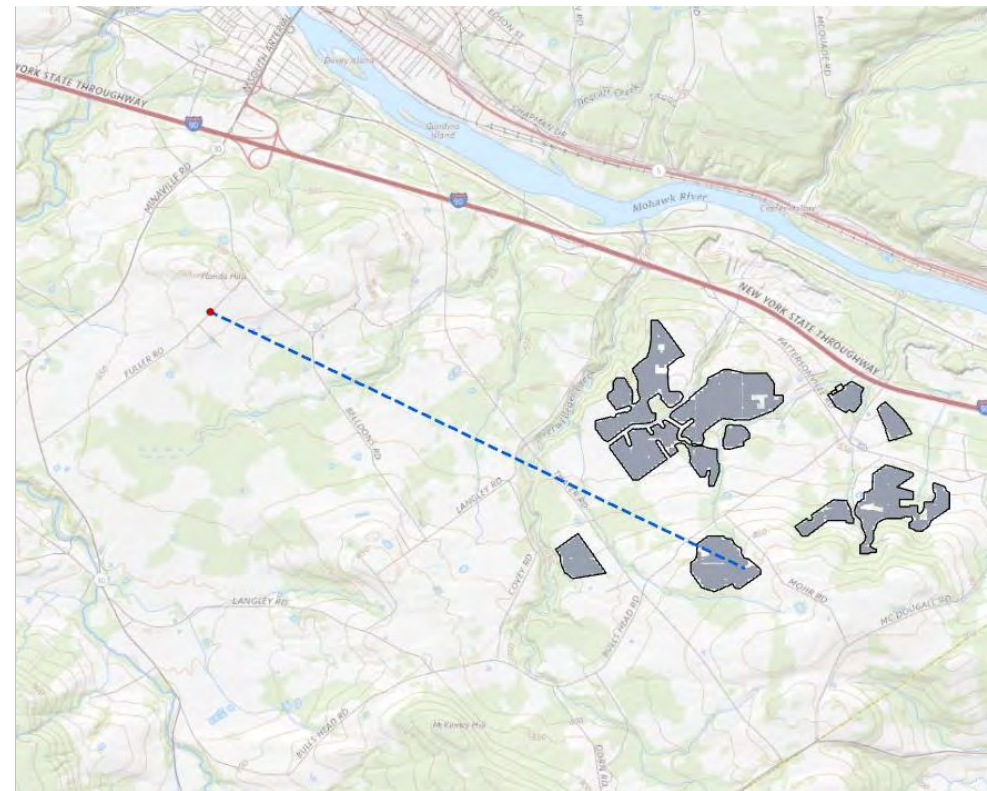


L7- LINE OF SIGHT FROM FULLER ROAD TO SOLAR ARRAY



Viewpoint Location Aerial

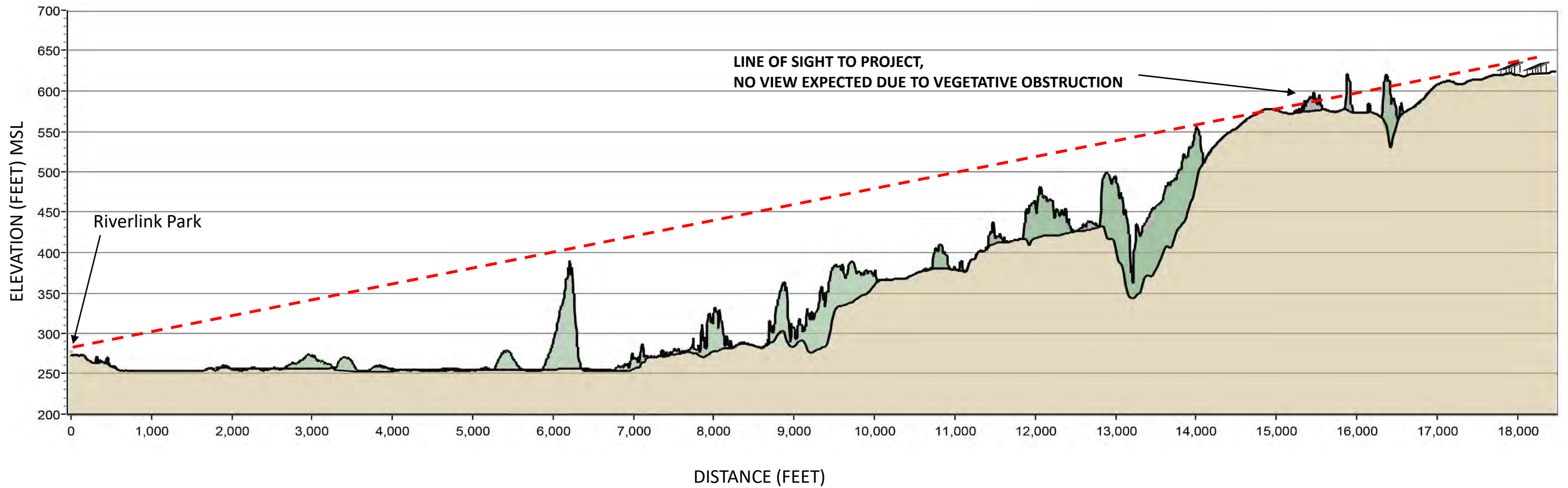
Viewpoint Location Topo



Viewpoint Coordinates in	571478
NY State Plane East	1484957.6
Viewpoint Location	Fuller Rd
Distance to Object	3.5 miles
Direction of View	SE

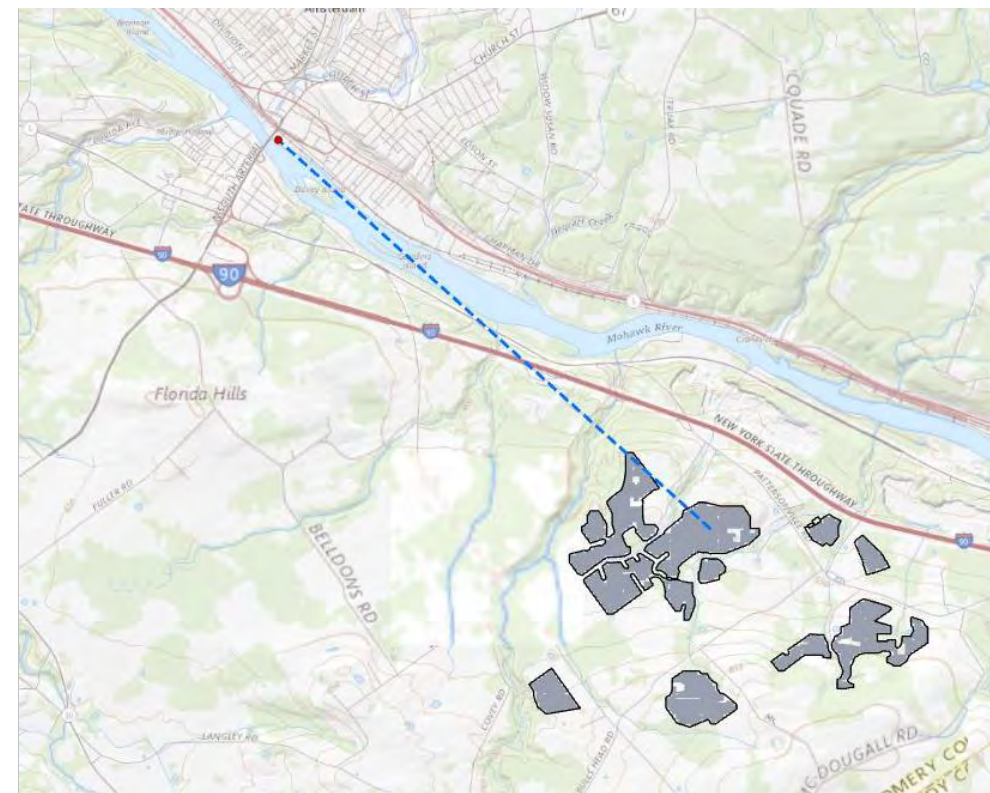
High River Energy Center  
 Florida, New York  
 Line of Sight  
 September 2019

L8- LINE OF SIGHT FROM RIVERLINK PARK TO SOLAR ARRAY



Viewpoint Location Aerial

Viewpoint Location Topo



Viewpoint Coordinates in	574506.4
NY State Plane East	1494277.3
Viewpoint Location	Riverlink Park,
Distance to Object	3.4 miles
Direction of View	SE

High River Energy Center  
 Florida, New York  
 Line of Sight  
 September 2019

**HIGH RIVER ENERGY PROJECT  
ARTICLE 10 EXHIBIT 24**

**SIMULATION RATING FORMS**

**ATTACHMENT 5**



## TRC Visual Impact Rating Form

Project: High River Energy Center	Date: 9.15.2019
Viewpoint Number: 12	Preparer: JBartos
Viewpoint Location: Florida	
Viewpoint Description: view from Bulls Head Road, view southeast	
Landscape Similarity Zone: Agricultural/Open, Developed Road	
Viewer Type (check all that apply): <input checked="" type="checkbox"/> Resident <input type="checkbox"/> Commuter/Traveler <input checked="" type="checkbox"/> Local Motorist <input type="checkbox"/> Recreational <input type="checkbox"/> Worker	
Seasonal Condition: <input type="checkbox"/> Leaf On <input checked="" type="checkbox"/> Leaf Off	

Visual Rating Element	Rating	Notes
<b>Part 1 Visual Contrast Rating</b>		
Form Contrast	2	Form incongruous to existing environment
Line Contrast	1.5	Short profile but with vertical lines similar to existing bare branched vegetation
Texture Contrast	2	Texture is not the same as existing but is not highly discernible from VP
Color Contrast	2	Low profile shows panels below tree line. Color blends/is absorbed somewhat by the darker colors of the leaf off veg
Project Scale Contrast/Spatial Dominance	1.5	Low profile, arrays do not dominate the view at this VP
Broken Horizon Line	0	
Visual Acuity	2	VP is somewhat close proximity but arrays are sited at distance from road. Some discernible detail observed
Amount of Project Clearing Seen	0	
Screening/Mitigation Needed	1.5	Roadside veg along road screens a lot. This is through a gap in the veg.
<b>Total</b>	<b>12.5</b>	
<b>Part 2 Viewpoint Sensitivity Rating</b>		
Within a Visual Resource*	0	
View of Other Visual Resource with Project*	0	
A Listed/Known Scenic Resource of Visual Quality*	0	
Number of Viewers (Low or High Use Activity)	1	Local rural road view with some existing roadside veg screening
Duration of View	1	Intermittent and short duration
Presence of Existing Development	1.5	Existing but few residences in view
Uniqueness of Landscape Compared to Region	1	typical
Presence of Water	0	
<b>Total</b>	<b>4.5</b>	
<b>Part 3 Scenic Quality</b>		
General Scenic Quality of the View	<b>2</b>	Pretty open field with farm in view

\* these visual rating elements are yes or no answers. Therefore, a rating of 0 or 3 should be applied

Rating Scale	
0	None
1	Weak
2	Moderate
3	Strong

## TRC Visual Impact Rating Form

Project: High River Energy Center	Date: 9/9/19	
Viewpoint Number: 12	Preparer: Michael Ross	
Viewpoint Location: Florida		
Viewpoint Description: view from Bulls Head Road, view southeast		
Landscape Similarity Zone: Agricultural/Open, Developed Road		
Viewer Type (check all that apply): <input checked="" type="checkbox"/> Resident <input type="checkbox"/> Commuter/Traveler <input checked="" type="checkbox"/> Local Motorist <input type="checkbox"/> Recreational <input type="checkbox"/> Worker		
Seasonal Condition: <input type="checkbox"/> Leaf On <input checked="" type="checkbox"/> Leaf Off		
<b>Visual Rating Element</b>		
<b>Rating</b>		
<b>Notes</b>		
<b>Part 1 Visual Contrast Rating</b>		
Form Contrast	1.5	Although the panels are below the horizon line “nestled” into the rolling landscape; the rigidness of the polygon type angular form of these shapes draw attention within its surrounding... particularly during leaf-off conditions.
Line Contrast	1.5	The upward vertically oriented hard shapes of the panels are in conflict with the softness of the existing rolling landscape.
Texture Contrast	1	The smooth, hard, angular panels contrast with the organic, natural existing farmland and old field hedge row however, location and distance provide some distraction and soften the overall impact.
Color Contrast	1.5	The hard-black panels contrast with the existing earth tone colors found in the landscape.
Project Scale Contrast/Spatial Dominance	1	Distance and location in conjunction with the fact that the panels are nestled down in the rolling topography of the landscape help soften the size and scale and overall visual impact.
Broken Horizon Line	0	The horizon line is not broken by the panels due to location.
Visual Acuity	1	Distance, existing topography, and existing vegetation serve to reduce details of the proposed structures and visual acuity.
Amount of Project Clearing Seen	0	No discernable clearing can be identified due to the fact that the panels are located on a downslope within existing rolling terrain.
Screening/Mitigation Needed	2.5	The panels are visible from this location. Therefore, appropriate visual mitigation/screening efforts will be needed- particularly in leaf-off conditions.
<b>Total</b>	<b>10</b>	
<b>Part 2 Viewpoint Sensitivity Rating</b>		
Within a Visual Resource*	0	
View of Other Visual Resource with Project*	0	
A Listed/Known Scenic Resource of Visual Quality*	0	
Number of Viewers (Low or High Use Activity)	1.5	Minimal residential structures appear to be present in the distance however, increased views will occur by vehicles and passersby utilizing the roadway.
Duration of View	1.5	Although minimal residential structures appear to be present, long-term duration of views will most likely occur. Conversely, short-term views will occur by vehicular travel and passersby utilizing the roadway.
Presence of Existing Development	1	Several residential structures are present in the distance.
Uniqueness of Landscape Compared to Region	1	The landscape appears to be representative to the area.
Presence of Water	0	
<b>Total</b>		
<b>Part 3 Scenic Quality</b>		

General Scenic Quality of the View	1.5	The view provides a peaceful, rural, and quiet setting that is appealing and pleasant yet remote and removed.
------------------------------------	-----	---

*\* these visual rating elements are yes or no answers. Therefore, a rating of 0 or 3 should be applied*

Rating Scale	
0	None
1	Weak
2	Moderate
3	Strong



## TRC Visual Impact Rating Form

Project: High River Energy Center	Date: 9/19/2019
Viewpoint Number: 12	Preparer: Heather Vaillant2
Viewpoint Location: Florida	
Viewpoint Description: view from Bulls Head Road, view southeast	
Landscape Similarity Zone: Agricultural/Open, Developed Road	
Viewer Type (check all that apply): <input checked="" type="checkbox"/> Resident <input type="checkbox"/> Commuter/Traveler <input checked="" type="checkbox"/> Local Motorist <input type="checkbox"/> Recreational <input type="checkbox"/> Worker	
Seasonal Condition: <input type="checkbox"/> Leaf On <input checked="" type="checkbox"/> Leaf Off	

Visual Rating Element	Rating	Notes
<b>Part 1 Visual Contrast Rating</b>		
Form Contrast	2	New form in landscape
Line Contrast	1	
Texture Contrast	2.5	
Color Contrast	2	Contrasts with field
Project Scale Contrast/Spatial Dominance	1.5	
Broken Horizon Line	0.5	
Visual Acuity	1.5	
Amount of Project Clearing Seen	0	
Screening/Mitigation Needed	2	
<b>Total</b>	<b>13</b>	
<b>Part 2 Viewpoint Sensitivity Rating</b>		
Within a Visual Resource*	0	
View of Other Visual Resource with Project*	0	
A Listed/Known Scenic Resource of Visual Quality*	0	
Number of Viewers (Low or High Use Activity)	1.5	Local road, residences near viewpoint
Duration of View	2	Short duration from road, but long duration from residences
Presence of Existing Development	1.5	Minimal development
Uniqueness of Landscape Compared to Region	1	Typical of the area
Presence of Water	0	
<b>Total</b>	<b>6</b>	
<b>Part 3 Scenic Quality</b>		
General Scenic Quality of the View	<b>2</b>	

\* these visual rating elements are yes or no answers. Therefore, a rating of 0 or 3 should be applied

Rating Scale	
0	None
1	Weak
2	Moderate
3	Strong



## TRC Visual Impact Rating Form

Project: High River Energy Center	Date: 9.16.2019
Viewpoint Number: 15c	Preparer: JBartos
Viewpoint Location: Florida	
Viewpoint Description: view from Mohr Road	
Landscape Similarity Zone: Agricultural/Open, Developed Road	
Viewer Type (check all that apply): <input type="checkbox"/> Resident <input type="checkbox"/> Commuter/Traveler <input checked="" type="checkbox"/> Local Motorist <input type="checkbox"/> Recreational <input type="checkbox"/> Worker	
Seasonal Condition: <input type="checkbox"/> Leaf On <input checked="" type="checkbox"/> Leaf Off	

Visual Rating Element	Rating	Notes
-----------------------	--------	-------

<b>Part 1 Visual Contrast Rating</b>
--------------------------------------

Form Contrast	2.5	Newly introduced form of solar arrays are apparent due to proximity and are seen on the hill
Line Contrast	2	New horizontal type lines introduced against existing
Texture Contrast	2	New object textures introduced compared to open field in between roadside vegetation
Color Contrast	2.5	New darker colors introduced compared to open field in between roadside vegetation
Project Scale Contrast/Spatial Dominance	2	Moderate. Roadside foreground vegetation helps with equilibrating and tempering scale contrast
Broken Horizon Line	0.5	Minimal
Visual Acuity	2	Panels are apparent and some discernible detail
Amount of Project Clearing Seen	0	
Screening/Mitigation Needed	1	Existing roadside vegetation assists in mitigation
<b>Total</b>	<b>14.5</b>	

<b>Part 2 Viewpoint Sensitivity Rating</b>
--

Within a Visual Resource*	0	
View of Other Visual Resource with Project*	0	
A Listed/Known Scenic Resource of Visual Quality*	0	
Number of Viewers (Low or High Use Activity)	1	Local road
Duration of View	1	Short duration intermittent views
Presence of Existing Development	0.5	Low
Uniqueness of Landscape Compared to Region	0.5	typical
Presence of Water	0	
<b>Total</b>	<b>3</b>	

<b>Part 3 Scenic Quality</b>
------------------------------

General Scenic Quality of the View	<b>1.5</b>	Typical field and trees for the area but not outstanding
------------------------------------	------------	--

\* these visual rating elements are yes or no answers. Therefore, a rating of 0 or 3 should be applied

Rating Scale	
0	None
1	Weak
2	Moderate
3	Strong



## TRC Visual Impact Rating Form

Project: High River Energy Center		Date: 9/18/19
Viewpoint Number: 15c		Preparer: Michael Ross
Viewpoint Location: Florida		
Viewpoint Description: view from Mohr Road		
Landscape Similarity Zone: Agricultural/Open, Developed Road		
Viewer Type (check all that apply): <input type="checkbox"/> Resident <input type="checkbox"/> Commuter/Traveler <input checked="" type="checkbox"/> Local Motorist <input type="checkbox"/> Recreational <input type="checkbox"/> Worker		
Seasonal Condition: <input type="checkbox"/> Leaf On <input checked="" type="checkbox"/> Leaf Off		
<b>Visual Rating Element</b>		
<b>Rating</b>		
<b>Notes</b>		
<b>Part 1 Visual Contrast Rating</b>		
Form Contrast	2	Defined shapes are visible, created by the rows of solar panels and racking systems- allowing for contrast in shape and form to occur between the array field and the surrounding natural landscape
Line Contrast	2	A defined line is also visible, created by the rows of solar panels allowing for contrast in shape and form to occur between the array field and the surrounding natural landscape
Texture Contrast	2	Although the relatively smooth texture of the existing mowed field does not contrast much with the smoothness of the solar panels, contrast between the solar panels and the surrounding vegetation does occur somewhat pronounced.
Color Contrast	1.5	The color of the solar panels contrasts somewhat with the mowed field and blue sky.
Project Scale Contrast/Spatial Dominance	1.5	The section of array field presented in this view "fits" relatively well into the existing landscape. It does not overwhelm the view and works with the existing terrain.
Broken Horizon Line	1.5	The solar arrays do break the horizon however, this does not occur much above the horizon line and the fact that the panels "roll" with the terrain softens the overall impact of the horizon line being broken.
Visual Acuity	1.5	Individual sections of the racking system/panels can be observed but, specific details cannot be discerned.
Amount of Project Clearing Seen	1	Although the solar array field appears to "fit" within the existing cleared area of this landscape, it seems that some clearing will more than likely be needed.
Screening/Mitigation Needed	2	Strategically place screening and possible a continuous buffer screen planting in some areas may be necessary to mitigate view.
<b>Total</b>	<b>15</b>	
<b>Part 2 Viewpoint Sensitivity Rating</b>		
Within a Visual Resource*	0	
View of Other Visual Resource with Project*	0	
A Listed/Known Scenic Resource of Visual Quality*	0	
Number of Viewers (Low or High Use Activity)	1	Old farm equipment, minimal to no structures, and a rural road suggest that this area has a low use activity.
Duration of View	1.5	The solar arrays will be seen for short periods of time by passersby in vehicles.
Presence of Existing Development	1	Old farm equipment, minimal to no structures, and a rural road suggest that this area has a minimal presence of existing development.
Uniqueness of Landscape Compared to Region	1.5	This view is picturesque however, it also seems to be typical for this region.
Presence of Water	1	Depressed heavily vegetated areas separated by a maintained vehicular access in the foreground can be observed, indicating the presence of water or a drainage waterway. There also seem to be some marshy-type vegetation present as well in this area.
<b>Total</b>	<b>6</b>	

**Part 3 Scenic Quality**

General Scenic Quality of the View

**1.5**

This view provides a picturesque setting of typical farmland that can be found in upstate New York.

*\* these visual rating elements are yes or no answers. Therefore, a rating of 0 or 3 should be applied*

**Rating Scale**

0	None
1	Weak
2	Moderate
3	Strong



## TRC Visual Impact Rating Form

Project: High River Energy Center	Date: 9/19/2019
Viewpoint Number: 15c	Preparer: Heather Vaillant
Viewpoint Location: Florida	
Viewpoint Description: view from Mohr Road	
Landscape Similarity Zone: Agricultural/Open, Developed Road	
Viewer Type (check all that apply): <input type="checkbox"/> Resident <input type="checkbox"/> Commuter/Traveler <input checked="" type="checkbox"/> Local Motorist <input type="checkbox"/> Recreational <input type="checkbox"/> Worker	
Seasonal Condition: <input type="checkbox"/> Leaf On <input checked="" type="checkbox"/> Leaf Off	

Visual Rating Element	Rating	Notes
-----------------------	--------	-------

<b>Part 1 Visual Contrast Rating</b>
--------------------------------------

Form Contrast	2	New form in landscape
Line Contrast	1	
Texture Contrast	2	
Color Contrast	2	Contrasts with field
Project Scale Contrast/Spatial Dominance	1.5	
Broken Horizon Line	1.5	
Visual Acuity	1.5	
Amount of Project Clearing Seen	1	Minimal clearing required
Screening/Mitigation Needed	2	
<b>Total</b>	<b>14.5</b>	

<b>Part 2 Viewpoint Sensitivity Rating</b>
--

Within a Visual Resource*	0	
View of Other Visual Resource with Project*	0	
A Listed/Known Scenic Resource of Visual Quality*	0	
Number of Viewers (Low or High Use Activity)	1	Local road
Duration of View	1.5	Short duration from road
Presence of Existing Development	1	Minimal development
Uniqueness of Landscape Compared to Region	1	Typical of the area
Presence of Water	0	
<b>Total</b>	<b>4.5</b>	

<b>Part 3 Scenic Quality</b>
------------------------------

General Scenic Quality of the View	<b>2</b>	
------------------------------------	----------	--

\* these visual rating elements are yes or no answers. Therefore, a rating of 0 or 3 should be applied

Rating Scale	
0	None
1	Weak
2	Moderate
3	Strong



## TRC Visual Impact Rating Form

Project: High River Energy Center	Date: 9.15.2019
Viewpoint Number: 26	Preparer: JBartos
Viewpoint Location: Amsterdam	
Viewpoint Description: view from Swart Hill Road	
Landscape Similarity Zone: Agricultural/Open, Resident, Developed Road	
Viewer Type (check all that apply): <input checked="" type="checkbox"/> Resident <input type="checkbox"/> Commuter/Traveler <input checked="" type="checkbox"/> Local Motorist <input type="checkbox"/> Recreational <input type="checkbox"/> Worker	
Seasonal Condition: <input type="checkbox"/> Leaf On <input checked="" type="checkbox"/> Leaf Off	

Visual Rating Element	Rating	Notes
<b>Part 1 Visual Contrast Rating</b>		
Form Contrast	1	Form is quite similar to what is seen at distance with existing field-forest pattern
Line Contrast	1	New horizontal lines introduced in field but similar to existing field-forest patterns
Texture Contrast	1	Texture change not great but addition of the new form creates additional "looking" texture
Color Contrast	2	Although the array color is similar to existing leaf off trees the new color that is introduced into the existing ochre fields provides contrast
Project Scale Contrast/Spatial Dominance	2	Does not have vertical scale but lateral breadth
Broken Horizon Line	0	Below horizon line
Visual Acuity	2	Individual panels cannot be observed but the arrays as a group on the hillside can be seen
Amount of Project Clearing Seen	0	
Screening/Mitigation Needed	2	
<b>Total</b>	<b>11</b>	
<b>Part 2 Viewpoint Sensitivity Rating</b>		
Within a Visual Resource*	0	
View of Other Visual Resource with Project*	0	
A Listed/Known Scenic Resource of Visual Quality*	0	
Number of Viewers (Low or High Use Activity)	2	Likely some number of motorists with short duration will observe these and there are residents in area
Duration of View	2.5	Both short and long duration
Presence of Existing Development	2.5	Development and human induced activities noted but is not industrial or too commercial
Uniqueness of Landscape Compared to Region	2	Typical of region but higher elevation long distance view gives it some value
Presence of Water	0	
<b>Total</b>	<b>9</b>	
<b>Part 3 Scenic Quality</b>		
General Scenic Quality of the View	<b>2</b>	

\* these visual rating elements are yes or no answers. Therefore, a rating of 0 or 3 should be applied

Rating Scale	
0	None
1	Weak
2	Moderate
3	Strong

## TRC Visual Impact Rating Form

Project: High River Energy Center		Date: 9/11/19
Viewpoint Number: 26		Preparer: Michael Ross
Viewpoint Location: Amsterdam		
Viewpoint Description: view from Swart Hill Road		
Landscape Similarity Zone: Agricultural/Open, Resident, Developed Road		
Viewer Type (check all that apply): <input checked="" type="checkbox"/> Resident <input type="checkbox"/> Commuter/Traveler <input checked="" type="checkbox"/> Local Motorist <input type="checkbox"/> Recreational <input type="checkbox"/> Worker		
Seasonal Condition: <input type="checkbox"/> Leaf On <input checked="" type="checkbox"/> Leaf Off		
<b>Visual Rating Element</b>		
<b>Rating</b>		
<b>Notes</b>		
<b>Part 1 Visual Contrast Rating</b>		
Form Contrast	1	Large man-made rectangular shapes can be seen on the hillside from a far distance away.
Line Contrast	.5	The verticalness of the individual array fields and segments provides some minimal contrast.
Texture Contrast	.5	A foreign type of material that appears smooth or "flat" can be observed from far away on the hillside that is in conflict with or contrast of the existing natural vegetations and surroundings.
Color Contrast	1	The man-made material of the solar panels contrasts in color with the natural earth tones of the existing vegetation and landscape.
Project Scale Contrast/Spatial Dominance	1	Even though the array fields are viewed from a far distance away, the size of the area being used and the total quantity of arrays located in the open field in the distance is obviously significant and impressive.
Broken Horizon Line	0	The horizon line is not broken in this view.
Visual Acuity	.5	Minimal to no detail can be seen from this distance however, the size of the array fields depicts a significant amount of man-made material observed in the landscape within this view.
Amount of Project Clearing Seen	0	
Screening/Mitigation Needed	1.5	From this view, strategically placed landscape screening efforts should suffice however, additional more significant efforts will more than likely be needed closer to the project site.
<b>Total</b>	<b>6</b>	
<b>Part 2 Viewpoint Sensitivity Rating</b>		
Within a Visual Resource*	0	
View of Other Visual Resource with Project*	0	
A Listed/Known Scenic Resource of Visual Quality*	0	
Number of Viewers (Low or High Use Activity)	1.5	Numerous structures can be seen in the distance all around the array fields. The setting is rural and these structures are assumed to be farmsteads and/or residential in nature with a low population and activity use.
Duration of View	1.5	Numerous structures can be seen in the distance all around the array fields. The setting is rural however, long-term and short-term views will more than likely occur.
Presence of Existing Development	1	Numerous structures in a rural farmland setting can be seen in the distance all around the array fields.
Uniqueness of Landscape Compared to Region	2	Although the landscape in this view could be perceived as typical upstate New York farmland, it appears to be of a higher level and quality. Extremely picturesque setting with a well-knit community nestled nicely into the hillside.
Presence of Water	0	No water appears to be present in this view.
<b>Total</b>	<b>6</b>	

**Part 3 Scenic Quality**

General Scenic Quality of the View

**2**

Extremely picturesque.

*\* these visual rating elements are yes or no answers. Therefore, a rating of 0 or 3 should be applied*

**Rating Scale**

0	None
1	Weak
2	Moderate
3	Strong



## TRC Visual Impact Rating Form

Project: High River Energy Center	Date: 9/16/2019
Viewpoint Number: 26	Preparer: Heather Vaillant
Viewpoint Location: Amsterdam	
Viewpoint Description: view from Swart Hill Road	
Landscape Similarity Zone: Agricultural/Open, Resident, Developed Road	
Viewer Type (check all that apply): <input checked="" type="checkbox"/> Resident <input type="checkbox"/> Commuter/Traveler <input checked="" type="checkbox"/> Local Motorist <input type="checkbox"/> Recreational <input type="checkbox"/> Worker	
Seasonal Condition: <input type="checkbox"/> Leaf On <input checked="" type="checkbox"/> Leaf Off	

Visual Rating Element	Rating	Notes
<b>Part 1 Visual Contrast Rating</b>		
Form Contrast	2	New form in landscape
Line Contrast	1	
Texture Contrast	2.5	
Color Contrast	2	Contrasts with fields, blends with trees
Project Scale Contrast/Spatial Dominance	2	Co-dominant
Broken Horizon Line	0.5	
Visual Acuity	1.5	
Amount of Project Clearing Seen	0	
Screening/Mitigation Needed	2	
<b>Total</b>	<b>13.5</b>	
<b>Part 2 Viewpoint Sensitivity Rating</b>		
Within a Visual Resource*	0	
View of Other Visual Resource with Project*	0	
A Listed/Known Scenic Resource of Visual Quality*	0	
Number of Viewers (Low or High Use Activity)	1.5	Local road, residences near viewpoint
Duration of View	2	Short duration from road, but long duration from residences
Presence of Existing Development	2	Quarries along river visible, residences and farms within landscape
Uniqueness of Landscape Compared to Region	2	
Presence of Water	0	
<b>Total</b>	<b>7.5</b>	
<b>Part 3 Scenic Quality</b>		
General Scenic Quality of the View	<b>2.5</b>	

\* these visual rating elements are yes or no answers. Therefore, a rating of 0 or 3 should be applied

Rating Scale	
0	None
1	Weak
2	Moderate
3	Strong

## TRC Visual Impact Rating Form



Project: High River Energy Center	Date: 9.15.2019
Viewpoint Number: 27	Preparer: JBartos
Viewpoint Location: Florida	
Viewpoint Description: view from Bulls Head Road, view north	
Landscape Similarity Zone: Agricultural/Open, Developed Road, and Residential	
Viewer Type (check all that apply): <input checked="" type="checkbox"/> Resident <input type="checkbox"/> Commuter/Traveler <input checked="" type="checkbox"/> Local Motorist <input type="checkbox"/> Recreational <input type="checkbox"/> Worker	
Seasonal Condition: <input type="checkbox"/> Leaf On <input checked="" type="checkbox"/> Leaf Off	


Visual Rating Element	Rating	Notes
<b>Part 1 Visual Contrast Rating</b>		
Form Contrast	2.5	The arrays as a contiguous whole provides a large form in the fields
Line Contrast	2	No vertical line contrast but lateral breadth of line
Texture Contrast	1	No discernible textures observed
Color Contrast	2.5	Although the darker color of the panels are somewhat similar to leaf off veg, the color contrast in the fields is high between existing and proposed conditions
Project Scale Contrast/Spatial Dominance	2	No real vertical contrast but has lateral breadth. The Project is at distance and does not consume a lot of the view – there is much undeveloped foreground and background space
Broken Horizon Line	0	
Visual Acuity	2	Individual panels are array details cannot be observed at this distance but the presence of the array that are visible is noted.
Amount of Project Clearing Seen	0	
Screening/Mitigation Needed	2	There is some existing veg for screening and the project is nestled in amongst forest groups already
<b>Total</b>	<b>14</b>	
<b>Part 2 Viewpoint Sensitivity Rating</b>		
Within a Visual Resource*	0	
View of Other Visual Resource with Project*	0	
A Listed/Known Scenic Resource of Visual Quality*	0	
Number of Viewers (Low or High Use Activity)	1.5	Local road with few residences
Duration of View	2.5	Local roads will have short duration views but low number of residences in view will have long duration views
Presence of Existing Development	2	Yes, houses nearby and the City of Amsterdam in the background
Uniqueness of Landscape Compared to Region	1	
Presence of Water	0	
<b>Total</b>	<b>7</b>	
<b>Part 3 Scenic Quality</b>		
General Scenic Quality of the View	<b>1.5</b>	Open views with fields but has development and human induced activities.

\* these visual rating elements are yes or no answers. Therefore, a rating of 0 or 3 should be applied

Rating Scale	
0	None
1	Weak
2	Moderate
3	Strong



## TRC Visual Impact Rating Form

 River Energy Center	Date: 9/9/19	
Viewpoint Number: 27	Preparer: Michael Ross	
Viewpoint Location: Florida		
Viewpoint Description: view from Bulls Head Road, view north		
Landscape Similarity Zone: Agricultural/Open, Developed Road, and Residential		
Viewer Type (check all that apply): <input checked="" type="checkbox"/> Resident <input type="checkbox"/> Commuter/Traveler <input checked="" type="checkbox"/> Local Motorist <input type="checkbox"/> Recreational <input type="checkbox"/> Worker		
Seasonal Condition: <input type="checkbox"/> Leaf On <input checked="" type="checkbox"/> Leaf Off		
<b>Visual Rating Element</b>		
<b>Rating</b>		
<b>Notes</b>		
<b>Part 1 Visual Contrast Rating</b>		
Form Contrast	1	The panels are located fairly far away nestled in a low-lying area and blending in quite well with the surroundings in this view.
Line Contrast	.5	The layout and configuration and location of the array fields allows for minimum contrast to occur.
Texture Contrast	.5	Distance softens the impact of size allowing for less contrast between the existing texture conditions of the farm field and vegetation present.
Color Contrast	.5	The monotone-type greys of the arrays blend in and play off the existing vegetation.
Project Scale Contrast/Spatial Dominance	1	The solar array fields are obviously quite large however, the patterns of the arrays do not dominate the landscape but, almost seem to "fit" rather well in the low-lying area.
Broken Horizon Line	0	The horizon line is not broken in this view by the solar arrays.
Visual Acuity	.5	Little to no detail is present in this view with regards to the solar arrays.
Amount of Project Clearing Seen	0	No clearing can be discerned.
Screening/Mitigation Needed	2	Strategically placed plantings can mitigate potential future views of the solar arrays.
<b>Total</b>	<b>6</b>	
<b>Part 2 Viewpoint Sensitivity Rating</b>		
Within a Visual Resource*	0	
View of Other Visual Resource with Project*	0	
A Listed/Known Scenic Resource of Visual Quality*	0	
Number of Viewers (Low or High Use Activity)	1.0	Several residential structures are present in the foreground and a probability of numerous viewers passing by in vehicles.
Duration of View	1.5	Duration of view will most likely be mixed. Short-term views from vehicular travel and long-term views from existing residential structures.
Presence of Existing Development	1.0	There are several residential structures located in the foreground of this view along with a populated area in the background beyond the solar fields quite a distance away.
Uniqueness of Landscape Compared to Region	1.5	This landscape appears to be fairly typical to the region.
Presence of Water	0	No evidence of any water appears to be present.
<b>Total</b>	<b>5</b>	
<b>Part 3 Scenic Quality</b>		
General Scenic Quality of the View	<b>1.5</b>	This view provides a fairly generic view of rural farmland in upstate New York.

\* these visual rating elements are yes or no answers. Therefore, a rating of 0 or 3 should be applied

Rating Scale	
0	None
1	Weak
2	Moderate
3	Strong



## TRC Visual Impact Rating Form

Project: High River Energy Center	Date: 9/16/2019
Viewpoint Number: 27	Preparer: Heather Vaillant
Viewpoint Location: Florida	
Viewpoint Description: view from Bulls Head Road, view north	
Landscape Similarity Zone: Agricultural/Open, Developed Road, and Residential	
Viewer Type (check all that apply): <input checked="" type="checkbox"/> Resident <input type="checkbox"/> Commuter/Traveler <input checked="" type="checkbox"/> Local Motorist <input type="checkbox"/> Recreational <input type="checkbox"/> Worker	
Seasonal Condition: <input type="checkbox"/> Leaf On <input checked="" type="checkbox"/> Leaf Off	

Visual Rating Element	Rating	Notes
<b>Part 1 Visual Contrast Rating</b>		
Form Contrast	2	New form in landscape
Line Contrast	1	
Texture Contrast	2.5	
Color Contrast	2	Contrasts with field
Project Scale Contrast/Spatial Dominance	2	
Broken Horizon Line	0.5	
Visual Acuity	1.5	
Amount of Project Clearing Seen	0	
Screening/Mitigation Needed	2	
<b>Total</b>	<b>13.5</b>	
<b>Part 2 Viewpoint Sensitivity Rating</b>		
Within a Visual Resource*	0	
View of Other Visual Resource with Project*	0	
A Listed/Known Scenic Resource of Visual Quality*	0	
Number of Viewers (Low or High Use Activity)	1.5	Local road, residences near viewpoint
Duration of View	2	Short duration from road, but long duration from residences
Presence of Existing Development	2	
Uniqueness of Landscape Compared to Region	2	
Presence of Water	0	
<b>Total</b>	<b>7.5</b>	
<b>Part 3 Scenic Quality</b>		
General Scenic Quality of the View	<b>2.5</b>	

\* these visual rating elements are yes or no answers. Therefore, a rating of 0 or 3 should be applied

Rating Scale	
0	None
1	Weak
2	Moderate
3	Strong



## TRC Visual Impact Rating Form

Project: High River Energy Center	Date: 9.15.2019
Viewpoint Number: 28	Preparer: JBartos
Viewpoint Location: Florida	
Viewpoint Description: view from Bulls Head Road, view north	
Landscape Similarity Zone: Agricultural/Open, Developed Road	
Viewer Type (check all that apply): <input checked="" type="checkbox"/> Resident <input type="checkbox"/> Commuter/Traveler <input checked="" type="checkbox"/> Local Motorist <input type="checkbox"/> Recreational <input type="checkbox"/> Worker	
Seasonal Condition: <input type="checkbox"/> Leaf On <input checked="" type="checkbox"/> Leaf Off	

Visual Rating Element	Rating	Notes
-----------------------	--------	-------

<b>Part 1 Visual Contrast Rating</b>
--------------------------------------

Form Contrast	2.5	The arrays as a contiguous whole provides a large form in the fields
Line Contrast	1	Low vertical line contrast but lateral breadth of line. Appearance of lines when viewer is looking parallel to panels that are to the right
Texture Contrast	1.5	No real discernible textures observed but there is appearance of texture when viewer is looking parallel to the panels that are on the rights
Color Contrast	2.5	Although the darker color of the panels are somewhat similar to leaf off veg, the color contrast in the fields is high between existing and proposed conditions
Project Scale Contrast/Spatial Dominance	2	No real vertical contrast but has lateral breadth. The Project is at distance but appears to consume most of the middleground view.
Broken Horizon Line	0	
Visual Acuity	2.5	There is some existing veg for screening and the project is nestled in amongst forest groups already
Amount of Project Clearing Seen	0	
Screening/Mitigation Needed	2	
<b>Total</b>	<b>14</b>	

<b>Part 2 Viewpoint Sensitivity Rating</b>
--

Within a Visual Resource*	0	
View of Other Visual Resource with Project*	0	
A Listed/Known Scenic Resource of Visual Quality*	0	
Number of Viewers (Low or High Use Activity)	1.5	Local road with few residences
Duration of View	2.5	Local roads will have short duration views but low number of residences in view will have long duration views
Presence of Existing Development	2	Yes, houses nearby and the City of Amsterdam in the background
Uniqueness of Landscape Compared to Region	1	
Presence of Water	0	
<b>Total</b>	<b>7</b>	

<b>Part 3 Scenic Quality</b>
------------------------------

General Scenic Quality of the View	<b>1.5</b>	Open fields in foreground are visually refreshing but not a completely outstanding view.
------------------------------------	------------	--

*\* these visual rating elements are yes or no answers. Therefore, a rating of 0 or 3 should be applied*

Rating Scale	
0	None
1	Weak
2	Moderate
3	Strong

## TRC Visual Impact Rating Form

Project: High River Energy Center	Date: 9/9/19
Viewpoint Number: 28	Preparer: Michael Ross
Viewpoint Location: Florida	
Viewpoint Description: view from Bulls Head Road, view north	
Landscape Similarity Zone: Agricultural/Open, Developed Road	
Viewer Type (check all that apply): <input checked="" type="checkbox"/> Resident <input type="checkbox"/> Commuter/Traveler <input checked="" type="checkbox"/> Local Motorist <input type="checkbox"/> Recreational <input type="checkbox"/> Worker	
Seasonal Condition: <input type="checkbox"/> Leaf On <input checked="" type="checkbox"/> Leaf Off	
<b>Visual Rating Element</b>	
<b>Rating</b>	<b>Notes</b>
<b>Part 1 Visual Contrast Rating</b>	
Form Contrast	1.5 The panels are quite a distance away however, the sheer size of the array fields allows for large dark grey objects to appear in the distance providing contrast.
Line Contrast	.5 The layout and configuration of the array fields mimics the angles of the horizon line in the background and the access road in the foreground.
Texture Contrast	1.5 Distance softens the impact of size allowing for less contrast between the existing texture conditions of the farm field and vegetation present however, the overall smoothness of the array fields that is observed still stands out in this view.
Color Contrast	1 The monotone-type greys of the arrays blend in and play off the existing access road in the foreground and the sky and existing vegetation.
Project Scale Contrast/Spatial Dominance	1 The solar array fields are obviously quite large however, the patterns of the arrays do not dominate the landscape but, almost seem to "fit" rather well.
Broken Horizon Line	0 The horizon line is not broken in this view by the solar arrays.
Visual Acuity	.5 Little to no detail is present in this view with regards to the solar arrays.
Amount of Project Clearing Seen	0 No clearing can be discerned.
Screening/Mitigation Needed	2 Strategically placed plantings can mitigate potential future views of the solar arrays.
<b>Total</b>	<b>8</b>
<b>Part 2 Viewpoint Sensitivity Rating</b>	
Within a Visual Resource*	0
View of Other Visual Resource with Project*	0
A Listed/Known Scenic Resource of Visual Quality*	0
Number of Viewers (Low or High Use Activity)	1.5 It appears that a number of farmsteads and/or residential structures are present off in the distance along with the probability of numerous viewers passing by in vehicles.
Duration of View	1.5 Duration of view will most likely be mixed. Short-term views from vehicular travel and long-term views from existing farmsteads and residential structures nearby.
Presence of Existing Development	1.5 There appears to be a number of structures located just beyond the array fields in this view.
Uniqueness of Landscape Compared to Region	1.5 This landscape appears to be fairly typical to the region although quite scenic.
Presence of Water	0 No evidence of any water appears to be present.
<b>Total</b>	<b>6</b>
<b>Part 3 Scenic Quality</b>	

General Scenic Quality of the View	1.5	This view provides a fairly generic view of rural farmland in upstate New York.
------------------------------------	-----	---

*\* these visual rating elements are yes or no answers. Therefore, a rating of 0 or 3 should be applied*

Rating Scale	
0	None
1	Weak
2	Moderate
3	Strong



## TRC Visual Impact Rating Form

Project: High River Energy Center	Date: 9/16/2019
Viewpoint Number: 28	Preparer: Heather Vaillant
Viewpoint Location: Florida	
Viewpoint Description: view from Bulls Head Road, view north	
Landscape Similarity Zone: Agricultural/Open, Developed Road	
Viewer Type (check all that apply): <input checked="" type="checkbox"/> Resident <input type="checkbox"/> Commuter/Traveler <input checked="" type="checkbox"/> Local Motorist <input type="checkbox"/> Recreational <input type="checkbox"/> Worker	
Seasonal Condition: <input type="checkbox"/> Leaf On <input checked="" type="checkbox"/> Leaf Off	

Visual Rating Element	Rating	Notes
-----------------------	--------	-------

<b>Part 1 Visual Contrast Rating</b>
--------------------------------------

Form Contrast	2	New form in landscape
Line Contrast	1	
Texture Contrast	2.5	
Color Contrast	2	Contrasts with field
Project Scale Contrast/Spatial Dominance	2	
Broken Horizon Line	0.5	
Visual Acuity	1.5	
Amount of Project Clearing Seen	1	Minimal clearing
Screening/Mitigation Needed	2	
<b>Total</b>	<b>14.5</b>	

<b>Part 2 Viewpoint Sensitivity Rating</b>
--

Within a Visual Resource*	0	
View of Other Visual Resource with Project*	0	
A Listed/Known Scenic Resource of Visual Quality*	0	
Number of Viewers (Low or High Use Activity)	1.5	Local road, residences near viewpoint
Duration of View	1	Short duration from road
Presence of Existing Development	2	
Uniqueness of Landscape Compared to Region	2	
Presence of Water	0	
<b>Total</b>	<b>6.5</b>	

<b>Part 3 Scenic Quality</b>
------------------------------

General Scenic Quality of the View	<b>2</b>	
------------------------------------	----------	--

\* these visual rating elements are yes or no answers. Therefore, a rating of 0 or 3 should be applied

Rating Scale	
0	None
1	Weak
2	Moderate
3	Strong



## TRC Visual Impact Rating Form

Project: High River Energy Center	Date: 9.15.2019
Viewpoint Number: 29	Preparer: JBartos
Viewpoint Location: Florida	
Viewpoint Description: view from Patterson Road	
Landscape Similarity Zone: Agricultural/Open, Resident, Developed Road	
Viewer Type (check all that apply): <input checked="" type="checkbox"/> Resident <input type="checkbox"/> Commuter/Traveler <input checked="" type="checkbox"/> Local Motorist <input type="checkbox"/> Recreational <input type="checkbox"/> Worker	
Seasonal Condition: <input type="checkbox"/> Leaf On <input checked="" type="checkbox"/> Leaf Off	

Visual Rating Element	Rating	Notes
<b>Part 1 Visual Contrast Rating</b>		
Form Contrast	2	New form introduced into existing environment
Line Contrast	1.5	New lines introduced but are similar to larger horizontal shapes of field and forest (background)
Texture Contrast	1	No big texture contrasts. Foreground trees and house lines and patterns give greater contrast than the project.
Color Contrast	1	Arrays do not provide a great amount of color contrast as to what is seen against existing. Color is similar to house and background trees on hill
Project Scale Contrast/Spatial Dominance	1.5	Low profile of project but has lateral breadth. Existing house seems to give greater contrast than project
Broken Horizon Line	0	Project below horizon line
Visual Acuity	1.5	Project is at distance but arrays and fence are apparent
Amount of Project Clearing Seen	0	
Screening/Mitigation Needed	2.5	Likely some needed due to proximity to homeowner
<b>Total</b>	<b>11</b>	
<b>Part 2 Viewpoint Sensitivity Rating</b>		
Within a Visual Resource*	0	
View of Other Visual Resource with Project*	0	
A Listed/Known Scenic Resource of Visual Quality*	0	
Number of Viewers (Low or High Use Activity)	1.5	Local road where panels will be in view plus low number of residences
Duration of View	2.5	Local road with short duration views but residence in view will have long duration view
Presence of Existing Development	2	Yes, House
Uniqueness of Landscape Compared to Region	1	
Presence of Water	0	
<b>Total</b>	<b>7</b>	
<b>Part 3 Scenic Quality</b>		
General Scenic Quality of the View	<b>1.5</b>	Nice open field mixed with forest but has human induced activities present.

\* these visual rating elements are yes or no answers. Therefore, a rating of 0 or 3 should be applied

Rating Scale	
0	None
1	Weak
2	Moderate
3	Strong

## TRC Visual Impact Rating Form

Project: High River Energy Center	Date: 9/9/19	
Viewpoint Number: 29	Preparer: Michael Ross	
Viewpoint Location: Florida		
Viewpoint Description: view from Patterson Road		
Landscape Similarity Zone: Agricultural/Open, Resident, Developed Road		
Viewer Type (check all that apply): <input checked="" type="checkbox"/> Resident <input type="checkbox"/> Commuter/Traveler <input checked="" type="checkbox"/> Local Motorist <input type="checkbox"/> Recreational <input type="checkbox"/> Worker		
Seasonal Condition: <input type="checkbox"/> Leaf On <input checked="" type="checkbox"/> Leaf Off		
<b>Visual Rating Element</b>		
	<b>Rating</b>	<b>Notes</b>
<b>Part 1 Visual Contrast Rating</b>		
Form Contrast	2	The panels roll along with the existing terrain quite well however, they are exposed and create contrast.
Line Contrast	1.5	Because the panels are exposed the layout "line" of the arrays is highlighted even though this "line" follows existing terrain.
Texture Contrast	1.5	The man-made panel configuration in the open field/hillside creates some contrast.
Color Contrast	1.5	The hard-black panels contrast with the existing earth tone colors found along the hillside and on the existing snow-covered driveway but, do blend in somewhat with the existing vegetation in the landscape.
Project Scale Contrast/Spatial Dominance	1	The array layout and configuration works with the exiting topography, is nestled down into the hillside, and therefore creates spatial dominance in the landscape.
Broken Horizon Line	0	The horizon line is not broken by the panels.
Visual Acuity	1	Minimal detail of the solar panel arrays can be discerned.
Amount of Project Clearing Seen	0	Clearing efforts needed for this layout configuration cannot be determined in this view.
Screening/Mitigation Needed	2.5	Appropriate screening efforts will be necessary to mitigate views from the residential structure and the existing roadway.
<b>Total</b>	<b>11</b>	
<b>Part 2 Viewpoint Sensitivity Rating</b>		
Within a Visual Resource*	0	
View of Other Visual Resource with Project*	0	
A Listed/Known Scenic Resource of Visual Quality*	0	
Number of Viewers (Low or High Use Activity)	1.5	A residential structure appears to be present in the distance however, increased views will occur by vehicles and passersby utilizing the roadway.
Duration of View	1.5	Only one (1) residential structure appears to be present with long-term duration of views most likely occurring, however, short-term views will also occur by vehicular travel and passersby utilizing the roadway.
Presence of Existing Development	.5	Only one residential structure is present in this view.
Uniqueness of Landscape Compared to Region	2	The landscape in this view is very picturesque and tranquil and seems to be somewhat above the average landscape in uniqueness even though it is similar.
Presence of Water	0	No presence of water can be seen in this view
<b>Total</b>	<b>5.5</b>	
<b>Part 3 Scenic Quality</b>		
General Scenic Quality of the View	<b>2</b>	The landscape in this view is very picturesque and tranquil and seems to be somewhat above the average landscape in quality.



*\* these visual rating elements are yes or no answers. Therefore, a rating of 0 or 3 should be applied*

<b>Rating Scale</b>	
0	None
1	Weak
2	Moderate
3	Strong



## TRC Visual Impact Rating Form

Project: High River Energy Center	Date: 9/16/2019
Viewpoint Number: 29	Preparer: Heather Vaillant
Viewpoint Location: Florida	
Viewpoint Description: view from Patterson Road	
Landscape Similarity Zone: Agricultural/Open, Resident, Developed Road	
Viewer Type (check all that apply): <input checked="" type="checkbox"/> Resident <input type="checkbox"/> Commuter/Traveler <input checked="" type="checkbox"/> Local Motorist <input type="checkbox"/> Recreational <input type="checkbox"/> Worker	
Seasonal Condition: <input type="checkbox"/> Leaf On <input checked="" type="checkbox"/> Leaf Off	

Visual Rating Element	Rating	Notes
-----------------------	--------	-------

<b>Part 1 Visual Contrast Rating</b>
--------------------------------------

Form Contrast	2	New form in landscape
Line Contrast	1	
Texture Contrast	2.5	
Color Contrast	2	Contrasts with field
Project Scale Contrast/Spatial Dominance	2.5	
Broken Horizon Line	0.5	
Visual Acuity	1.5	
Amount of Project Clearing Seen	0	
Screening/Mitigation Needed	2	
<b>Total</b>	<b>14</b>	

<b>Part 2 Viewpoint Sensitivity Rating</b>
--

Within a Visual Resource*	0	
View of Other Visual Resource with Project*	0	
A Listed/Known Scenic Resource of Visual Quality*	0	
Number of Viewers (Low or High Use Activity)	1.5	Local road, residence near viewpoint
Duration of View	2	Short duration from road, but long duration from residence
Presence of Existing Development	1.5	
Uniqueness of Landscape Compared to Region	2	Typical of the area
Presence of Water	0	
<b>Total</b>	<b>7</b>	

<b>Part 3 Scenic Quality</b>
------------------------------

General Scenic Quality of the View	<b>2</b>	
------------------------------------	----------	--

\* these visual rating elements are yes or no answers. Therefore, a rating of 0 or 3 should be applied

Rating Scale	
0	None
1	Weak
2	Moderate
3	Strong



## TRC Visual Impact Rating Form

Project: High River Energy Center	Date: 9.17.2019
Viewpoint Number: 30	Preparer: JBartos
Viewpoint Location: Florida	
Viewpoint Description: view from Thayer Road	
Landscape Similarity Zone: Agricultural/Open, Developed Road	
Viewer Type (check all that apply): <input type="checkbox"/> Resident <input type="checkbox"/> Commuter/Traveler <input checked="" type="checkbox"/> Local Motorist <input type="checkbox"/> Recreational <input type="checkbox"/> Worker	
Seasonal Condition: <input checked="" type="checkbox"/> Leaf On <input type="checkbox"/> Leaf Off	

Visual Rating Element	Rating	Notes
<b>Part 1 Visual Contrast Rating</b>		
Form Contrast	1	Form recedes into view due to project offset distance from road
Line Contrast	1	Line contrast low due to similarity of horizontal line with horizontal field-background interface and linear aspect of background ridge
Texture Contrast	1	Textures not very discernible
Color Contrast	1.5	There is some color contrast introduced but appears to be overall absorbed into existing view
Project Scale Contrast/Spatial Dominance	1	Minimal scale contrast
Broken Horizon Line	1.5	Some parts of horizon line interrupted
Visual Acuity	1.5	Not very discernible
Amount of Project Clearing Seen	0	
Screening/Mitigation Needed	2	Project is exposed in open and to road
<b>Total</b>	<b>10.5</b>	
<b>Part 2 Viewpoint Sensitivity Rating</b>		
Within a Visual Resource*	0	
View of Other Visual Resource with Project*	0	
A Listed/Known Scenic Resource of Visual Quality*	0	
Number of Viewers (Low or High Use Activity)		
Duration of View	1	Short duration intermittent view from roadside travelers
Presence of Existing Development	1	
Uniqueness of Landscape Compared to Region	1.5	Typical, pretty, but not unique
Presence of Water	0	
<b>Total</b>	<b>3.5</b>	
<b>Part 3 Scenic Quality</b>		
General Scenic Quality of the View	<b>2</b>	Pretty view off of road that is pleasing to the eye.

\* these visual rating elements are yes or no answers. Therefore, a rating of 0 or 3 should be applied

Rating Scale	
0	None
1	Weak
2	Moderate
3	Strong

## TRC Visual Impact Rating Form

Project: High River Energy Center		Date: 9/18/19
Viewpoint Number: 30		Preparer: Michael Ross
Viewpoint Location: Florida		
Viewpoint Description: view from Thayer Road		
Landscape Similarity Zone: Agricultural/Open, Developed Road		
Viewer Type (check all that apply): <input type="checkbox"/> Resident <input type="checkbox"/> Commuter/Traveler <input checked="" type="checkbox"/> Local Motorist <input type="checkbox"/> Recreational <input type="checkbox"/> Worker		
Seasonal Condition: <input checked="" type="checkbox"/> Leaf On <input type="checkbox"/> Leaf Off		
<b>Visual Rating Element</b>		
		<b>Rating</b>
		<b>Notes</b>
<b>Part 1 Visual Contrast Rating</b>		
Form Contrast	1	Although the solar array field is obvious, the contrast it provides does not impact the overall form that currently exists in this view due to distance and the hillside terrain that exists in the background.
Line Contrast	1	The long linear line provided by the proposed array field is softened by the exiting terrain of the linear hillside in the background and ties into the overhead utilities and roadway in the foreground which allows for less contrast to occur.
Texture Contrast	1.5	Distance mitigates details in this view therefore the smoothness of the solar panels observed provides minimal contrast in texture with the surrounding landscape.
Color Contrast	1.5	The dark man-made hue provides some contrast with natural colors observed with the existing vegetation and earth tone colors of the soils in the farm field.
Project Scale Contrast/Spatial Dominance	1.5	The length of this solar field provides some sense of scale that does dominate the view in some ways.
Broken Horizon Line	1.5	The horizon line is broken however, this occurs in only one section of the view where the hillside subsides back down in elevation.
Visual Acuity	1	Distance minimizes the level of detail that can be observed in this view.
Amount of Project Clearing Seen	.5	It appears that very little vegetation will need to be cleared.
Screening/Mitigation Needed	3	A vegetation buffer screen will be needed to mitigate the view of the solar field.
<b>Total</b>	<b>12.5</b>	
<b>Part 2 Viewpoint Sensitivity Rating</b>		
Within a Visual Resource*	0	
View of Other Visual Resource with Project*	0	
A Listed/Known Scenic Resource of Visual Quality*	0	
Number of Viewers (Low or High Use Activity)	1.5	No residential structures appear to be present in the distance however, some views will occur by vehicles and passersby utilizing the roadway. The views will more than likely be low/limited due to the rural location.
Duration of View	1.5	No residential structures appear to be present in the distance however, short-term views will occur by vehicles and passersby utilizing the roadway.
Presence of Existing Development	.5	Although no structures can be seen in this view, a recently plowed/tilled field can be observed therefore, more than likely, indicating the presence of some sort of development nearby.
Uniqueness of Landscape Compared to Region	1	This landscape is typical for the region.
Presence of Water	0	No water is present in this view.
<b>Total</b>	<b>4.5</b>	
<b>Part 3 Scenic Quality</b>		

General Scenic Quality of the View	<b>1</b>	Minimal scenic quality is provided in this view.
------------------------------------	----------	--

*\* these visual rating elements are yes or no answers. Therefore, a rating of 0 or 3 should be applied*

<b>Rating Scale</b>	
0	None
1	Weak
2	Moderate
3	Strong



## TRC Visual Impact Rating Form

Project: High River Energy Center	Date: 9/19/3019
Viewpoint Number: 30	Preparer: Heather Vaillant
Viewpoint Location: Florida	
Viewpoint Description: view from Thayer Road	
Landscape Similarity Zone: Agricultural/Open, Developed Road	
Viewer Type (check all that apply): <input type="checkbox"/> Resident <input type="checkbox"/> Commuter/Traveler <input checked="" type="checkbox"/> Local Motorist <input type="checkbox"/> Recreational <input type="checkbox"/> Worker	
Seasonal Condition: <input checked="" type="checkbox"/> Leaf On <input type="checkbox"/> Leaf Off	

Visual Rating Element	Rating	Notes
-----------------------	--------	-------

<b>Part 1 Visual Contrast Rating</b>
--------------------------------------

Form Contrast	2	New form in landscape
Line Contrast	1	
Texture Contrast	2	
Color Contrast	2	Contrasts with field
Project Scale Contrast/Spatial Dominance	1.5	
Broken Horizon Line	1	
Visual Acuity	1.5	
Amount of Project Clearing Seen	0	
Screening/Mitigation Needed	2.5	
<b>Total</b>		

<b>Part 2 Viewpoint Sensitivity Rating</b>
--

Within a Visual Resource*	0	
View of Other Visual Resource with Project*	0	
A Listed/Known Scenic Resource of Visual Quality*	0	
Number of Viewers (Low or High Use Activity)	1	Local road
Duration of View	1.5	Short duration from road
Presence of Existing Development	1	Minimal development
Uniqueness of Landscape Compared to Region	1	Typical of the area
Presence of Water	0	
<b>Total</b>		

<b>Part 3 Scenic Quality</b>
------------------------------

General Scenic Quality of the View	<b>1</b>	
------------------------------------	----------	--

*\* these visual rating elements are yes or no answers. Therefore, a rating of 0 or 3 should be applied*

Rating Scale	
0	None
1	Weak
2	Moderate
3	Strong

**HIGH RIVER ENERGY PROJECT  
ARTICLE 10 EXHIBIT 24**

**OUTREACH CORRESPONDENCE**

**ATTACHMENT 6**



650 Suffolk St., Suite 200  
Lowell, MA 01854

T 978.970.5600  
TRCcompanies.com

July 10, 2019

Mr. Andrew Davis, Utility Supervisor  
NYS Department of Public Service  
3 Empire State Plaza  
Agency Building 3  
Albany, NY 12223-1350

Subject: Visual Impact Survey Request – High River Energy Center

Dear Mr. Davis:

This letter serves as an information request concerning the development of a proposed 90 MW solar energy center, the High River Energy Center, in the town of Florida, Montgomery County, New York, by High River Energy Center, LLC (the Applicant), a subsidiary of NextEra Energy Resources, LLC. The Applicant plans to submit an Application to construct a major electric generating facility under Article 10 of the New York Public Service Law (PSL) for the Project. Pursuant to the rules of the New York State Board on Electric Generation Siting and the Environment (Siting Board), applicants proposing to submit an Application under Article 10 of the PSL must submit a Public Involvement Program (PIP) plan and solicit input to inform the development and review process.

Specifically, this letter request is in regard to the requirements of Sections 1001.20 b and 1001.24 b(4) of the PSL concerning Exhibit 20 (Cultural Resources) and Exhibit 24 (Visual Impacts) of the Application. As required for Exhibit 24, a Visual Impact Assessment (VIA) shall be provided to the Siting Board to determine the extent and assess the significance of facility visibility. The VIA will, in part, identify sensitive resource areas susceptible to visual changes from the proposed Project and present photographic simulations of the proposed Project's facilities in relation to selected viewpoints. The VIA also supports requirements for Exhibit 20, which takes into account sites or structures listed in or eligible for listing in the National or State Register of Historic Places (NRHP/SRHP).

Enclosed with this letter is a progress report on the VIA. It provides an overview of the work that has been done to date on the VIA including the status of visualization studies, site visits, preliminary analyses, and background information on the VIA process.

In compliance with Article 10 regulations, we are herein requesting your input as part of the Applicant's consultations with local historic preservation groups, Town of Florida planning representatives, and State agencies, in its selection of important or representative viewpoints that may be subject to Project visibility.

Preliminary visual analyses and site investigations are in progress. The purpose of this letter and the enclosed Progress Report is to:

- Provide the reader with the extent and findings of visibility studies thus far, and



- Request the timely input from Town of Florida planning representatives, local historic groups, and other agencies in identifying any additional sensitive visual resources important to the community within the project study area over what is provided herein, and/or,
- Provide opportunity for the Town of Florida to suggest additional representative and reasonable candidate locations for photo-simulations (before and after depictions of Project) in areas of their concern. It should be noted this request is confined to areas with public access.

Please review the inventory of visual resources in Table 1 of the Progress Report for completeness.

Please also review the candidate viewpoints listed in Table 2 and shown in Figure 1 and 3 in Attachment 2 of the enclosed Progress Report.

**If you feel that the identified visual resources and candidate viewpoints provide an adequate representation of the Project for the purposes of preparing the VIA, no further action on your part is necessary. However, if there are other public locations of concern, currently not depicted, where you would like to suggest that additional representative photos be taken, or if there are any additional visual resources that are important to note, please provide your comments or feedback, with an explanation of why you feel that location/viewpoint should be included.**

Any comments or feedback you may have are **requested by July 24, 2019** and should be sent to the following:

- Via email to Judy Bartos: [JBartos@trccompanies.com](mailto:JBartos@trccompanies.com)
- Via email to William Boer: [William.Boer@nexteraenergy.com](mailto:William.Boer@nexteraenergy.com)

Thank you for your attention to this request. We appreciate your input and assistance identifying significant sensitive visual areas.

Best regards,



Judy Bartos, Visualization Specialist  
TRC Companies, Inc.

## 17-F-0597 High River Energy Center

### Visual Impact Survey Request

#### Resources and Viewpoints

##### Viewpoints

1. The first four locations are all along Pattersonville Road in the Town of Florida, but it appears that viewpoint location number one does not have any view of the Project. DPS recommends reviewing if this location will have any view of the Project, and if not, using another location for simulation purposes.
2. DPS recommends that the Applicant consider a water-related Landscape Similarity Zone due to the water resources (Mohawk River / Erie Canal, Mariaville Lake, Chuctanunda Creek, etc.) associated with the Project. These areas typically include recreational uses with prolonged views. There are several places on the Mohawk River that have Project visibility. DPS recommends using a location near the Southside Boat Launch, Guy Park or Riverlink Park.
3. It does not appear that Viewpoint Number 10 has much of a view of the Project (if any) from the Preliminary Viewshed Analysis. DPS recommends taking a Photo from Denice Road or Morris Road, (Map B1) as these areas appear to have high Project visibility and fall in a similar distance range. There is also a snowmobile trail where people will have views of the Project during leaf-off conditions.
4. DPS recommends adding a viewpoint from the Revolutionary Trail Scenic Byway by Coessans Park where there is Project visibility.
5. Viewpoint Number 24 is not included in the Photolog, but there is visibility from the Strawberry Fields Nature Preserve. DPS recommends choosing a location on this site where there is visibility and including a photo for review.
6. All viewpoints appear to be rural or agriculturally related. DPS recommends investigating if there are any photo locations from the Amsterdam area where the Project will have visibility.
7. DPS recommends investigating if any viewpoints capture historic locations or if any of the historic locations listed have a view of the Project area.
8. DPS recommends labeling the LSZ(s) represented on all viewpoint photos.
9. DPS recommends including the Distance Zone for each photo in Table 2: Preliminary Photo Simulation Candidate Locations, as well as on all viewpoint photos.
10. DPS would like to inquire about a legend item on the Preliminary Viewshed Analysis Maps. The maps have Schoharie Land Trust listed with properties in Montgomery, Schenectady and Saratoga Counties. Schoharie County is not even on any of the maps except maybe a miniscule portion in the bottom left corner of Map D1. DPS recommends reviewing this item for accuracy. (Mohawk Hudson Land Conservancy is listed as a Conservation Easement in the Preliminary Inventory of Visual Resources within five miles.)
11. DPS recommends investigating the following areas for Project visibility:

##### Bikeways & Trails

Mohawk Hudson Bikeway **added**

<https://www.mhbht.org/>

<https://www.cdtcmpo.org/mohhudew.pdf>

<https://www.cdtcmpo.org/mhbkmap.htm>

Chuctanunda Creek Trail

<https://www.amsterdamny.gov/our-city/things-to-do/chucktrail>

---

### Cemeteries

St Casimir's Cemetery  
98 Cemetery Rd.  
Amsterdam, NY 12010

Fairview Cemetery  
Upper Steadwell Avenue  
Amsterdam, NY 12010  
(Historic figures are buried here)

St. Mary's Cemetery  
39 E Main Street,  
Fort Johnson, NY 12070

-----

(Since this is an area with early settlers dating back to the Seventeenth Century, it may be important to note some of the smaller cemeteries found in the study area.

<https://montgomery.nygenweb.net/cemeteries/amstercem.html> )

St. John's Cemetery  
244 Widow Susan Rd  
Amsterdam, NY 12010

Crane Cemetery  
WVPQ+Q4  
Amsterdam, New York

---

### Historic Resources

Frost Homestead  
8866 Route 159  
Pattersonville, New York 12137  
<https://www.hmdb.org/marker.asp?marker=6040>

(The following resource falls near the five-mile line and is worth noting since it is listed on the NRHP.)

Fort Johnson  
2 Mergner Road  
Johnson, New York

[https://en.wikipedia.org/wiki/Old\\_Fort\\_Johnson](https://en.wikipedia.org/wiki/Old_Fort_Johnson)

---

## Recreational Resources

Town of Florida Veterans Memorial Park  
214 Fort Hunter Road  
Amsterdam, New York 12010

<http://www.townoffloridaveteransmemorialpark.org/>

Mariaville Lake

<https://www.dec.ny.gov/outdoor/83847.html>

Indian Lookout Country Club (Hosts annual motorcycle rally, concerts and events)

1142 Batter Street

Pattersonville, NY 12137

<https://www.facebook.com/IndianLookoutCountryClub/?rf=241411765869713>

Mariaville Lake Bed & Breakfast

176 Batter Street

Pattersonville, NY 12137

<http://www.mariavillelakebb.com/>

Amsterdam Castle NY Inc.

49 Florida Avenue

Amsterdam, NY 12010

<https://amsterdamcastle.com/>



650 Suffolk St., Suite 200  
Lowell, MA 01854

T 978.970.5600  
TRCcompanies.com

July 10, 2019

Ms. Kristy Primeau  
NYS Department of Environmental Conservation  
625 Broadway  
Albany, NY 12233

Subject: Visual Impact Survey Request – High River Energy Center

Dear Ms. Primeau:

This letter serves as an information request concerning the development of a proposed 90 MW solar energy center, the High River Energy Center, in the town of Florida, Montgomery County, New York, by High River Energy Center, LLC (the Applicant), a subsidiary of NextEra Energy Resources, LLC. The Applicant plans to submit an Application to construct a major electric generating facility under Article 10 of the New York Public Service Law (PSL) for the Project. Pursuant to the rules of the New York State Board on Electric Generation Siting and the Environment (Siting Board), applicants proposing to submit an Application under Article 10 of the PSL must submit a Public Involvement Program (PIP) plan and solicit input to inform the development and review process.

Specifically, this letter request is in regard to the requirements of Sections 1001.20 b and 1001.24 b(4) of the PSL concerning Exhibit 20 (Cultural Resources) and Exhibit 24 (Visual Impacts) of the Application. As required for Exhibit 24, a Visual Impact Assessment (VIA) shall be provided to the Siting Board to determine the extent and assess the significance of facility visibility. The VIA will, in part, identify sensitive resource areas susceptible to visual changes from the proposed Project and present photographic simulations of the proposed Project's facilities in relation to selected viewpoints. The VIA also supports requirements for Exhibit 20, which takes into account sites or structures listed in or eligible for listing in the National or State Register of Historic Places (NRHP/SRHP).

Enclosed with this letter is a progress report on the VIA. It provides an overview of the work that has been done to date on the VIA including the status of visualization studies, site visits, preliminary analyses, and background information on the VIA process.

In compliance with Article 10 regulations, we are herein requesting your input as part of the Applicant's consultations with local historic preservation groups, Town of Florida planning representatives, and State agencies, in its selection of important or representative viewpoints that may be subject to Project visibility.

Preliminary visual analyses and site investigations are in progress. The purpose of this letter and the enclosed Progress Report is to:

- Provide the reader with the extent and findings of visibility studies thus far, and
- Request the timely input from Town of Florida planning representatives, local historic groups, and other agencies in identifying any additional sensitive visual resources important to the community within the project study area over what is provided herein, and/or,

- Provide opportunity for the Town of Florida to suggest additional representative and reasonable candidate locations for photo-simulations (before and after depictions of Project) in areas of their concern. It should be noted this request is confined to areas with public access.

Please review the inventory of visual resources in Table 1 of the Progress Report for completeness.

Please also review the candidate viewpoints listed in Table 2 and shown in Figure 1 and 3 in Attachment 2 of the enclosed Progress Report.

**If you feel that the identified visual resources and candidate viewpoints provide an adequate representation of the Project for the purposes of preparing the VIA, no further action on your part is necessary. However, if there are other public locations of concern, currently not depicted, where you would like to suggest that additional representative photos be taken, or if there are any additional visual resources that are important to note, please provide your comments or feedback, with an explanation of why you feel that location/viewpoint should be included.**

Any comments or feedback you may have are **requested by July 24, 2019** and should be sent to the following:

- Via email to Judy Bartos: [JBartos@trccompanies.com](mailto:JBartos@trccompanies.com)
- Via email to William Boer: [William.Boer@nexteraenergy.com](mailto:William.Boer@nexteraenergy.com)

Thank you for your attention to this request. We appreciate your input and assistance identifying significant sensitive visual areas.

Best regards,



Judy Bartos, Visualization Specialist  
TRC Companies, Inc.

July 10, 2019

Mr. Timothy Sievers, Town Historian  
Town of Florida  
368 Thayer Road  
Amsterdam, NY 12010

Subject: Visual Impact Survey Request – High River Energy Center

Dear Mr. Sievers:

This letter serves as an information request concerning the development of a proposed 90 MW solar energy center, the High River Energy Center, in the town of Florida, Montgomery County, New York, by High River Energy Center, LLC (the Applicant), a subsidiary of NextEra Energy Resources, LLC. The Applicant plans to submit an Application to construct a major electric generating facility under Article 10 of the New York Public Service Law (PSL) for the Project. Pursuant to the rules of the New York State Board on Electric Generation Siting and the Environment (Siting Board), applicants proposing to submit an Application under Article 10 of the PSL must submit a Public Involvement Program (PIP) plan and solicit input to inform the development and review process.

Specifically, this letter request is in regard to the requirements of Sections 1001.20 b and 1001.24 b(4) of the PSL concerning Exhibit 20 (Cultural Resources) and Exhibit 24 (Visual Impacts) of the Application. As required for Exhibit 24, a Visual Impact Assessment (VIA) shall be provided to the Siting Board to determine the extent and assess the significance of facility visibility. The VIA will, in part, identify sensitive resource areas susceptible to visual changes from the proposed Project and present photographic simulations of the proposed Project's facilities in relation to selected viewpoints. The VIA also supports requirements for Exhibit 20, which takes into account sites or structures listed in or eligible for listing in the National or State Register of Historic Places (NRHP/SRHP).

Enclosed with this letter is a progress report on the VIA. It provides an overview of the work that has been done to date on the VIA including the status of visualization studies, site visits, preliminary analyses, and background information on the VIA process.

In compliance with Article 10 regulations, we are herein requesting your input as part of the Applicant's consultations with local historic preservation groups, Town of Florida planning representatives, and State agencies, in its selection of important or representative viewpoints that may be subject to Project visibility.

Preliminary visual analyses and site investigations are in progress. The purpose of this letter and the enclosed Progress Report is to:

- Provide the reader with the extent and findings of visibility studies thus far, and
- Request the timely input from Town of Florida planning representatives, local historic groups, and other agencies in identifying any additional sensitive visual resources important to the community within the project study area over what is provided herein, and/or,

- Provide opportunity for the Town of Florida to suggest additional representative and reasonable candidate locations for photo-simulations (before and after depictions of Project) in areas of their concern. It should be noted this request is confined to areas with public access.

Please review the inventory of visual resources in Table 1 of the Progress Report for completeness.

Please also review the candidate viewpoints listed in Table 2 and shown in Figure 1 and 3 in Attachment 2 of the enclosed Progress Report.

**If you feel that the identified visual resources and candidate viewpoints provide an adequate representation of the Project for the purposes of preparing the VIA, no further action on your part is necessary. However, if there are other public locations of concern, currently not depicted, where you would like to suggest that additional representative photos be taken, or if there are any additional visual resources that are important to note, please provide your comments or feedback, with an explanation of why you feel that location/viewpoint should be included.**

Any comments or feedback you may have are **requested by July 24, 2019** and should be sent to the following:

- Via email to Judy Bartos: [JBartos@trccompanies.com](mailto:JBartos@trccompanies.com)
- Via email to William Boer: [William.Boer@nexteraenergy.com](mailto:William.Boer@nexteraenergy.com)

Thank you for your attention to this request. We appreciate your input and assistance identifying significant sensitive visual areas.

Best regards,



Judy Bartos, Visualization Specialist  
TRC Companies, Inc.





August 9, 2019

Judy Bartos  
TRC Companies, Inc.  
650 Suffolk St. Suite 200  
Lowell, MA 01854

Re: Visual Impact Survey Report - High River Energy Center, LLC  
Case No.: 17- F - 0597

Dear Ms. Bartos:

This letter is in response to your inquiry letter dated July 10, 2019 to the Town of Florida. Thank you for the provided information as well as the opportunity to respond.

Initially, on a procedural note, the Town finds the timing of your inquiry somewhat premature and reserves the right to supplement our responses once Stipulation 24 and engineering/project layout have been completed and finalized. On that note, and in response to your inquiry, we hereby incorporate by reference all of the Town of Florida and Citizens Group comments that were previously provided in response to draft Stipulation 24.

We also request that following final adoption of the Stipulation 24, any further Visual Impact Survey Requests be distributed to the neighboring municipalities within 5 miles of the proposed site that you have identified under "3.0 Status of Visualization Studies" and that their feedback be provided to the Town of Florida and those State agencies identified under "1.1 Information Request." Speaking of "1.1 Information Request", the Town of Florida feels strongly that your Visual Impact Survey Requests should also include the Department of Agriculture and Markets, and the Counties of Montgomery, Schenectady & Saratoga. In addition, the Town of Florida requests that representative viewshed photos be taken from up to five residential properties in the Town of Florida.

Finally, it is unclear in your "Visual Impact Assessment Progress Report" if your "Inventory of Visual Resources" included: Forest Preserve Lands, Scenic Districts and scenic roads pursuant to ECL Article 49, areas covered by scenic easements, scenic overlooks and NYS Forest Lands. This should be clarified.

Very truly yours,

A handwritten signature in black ink that reads "Michael Crowe" followed by a stylized initial "av".

Michael Crowe  
Sr. Associate Attorney  
[mc@fmbf-law.com](mailto:mc@fmbf-law.com)

**SERVICE BY FAX NOT ACCEPTED**

cc: Eric Mead, Town Supervisor  
Stephen Le Fevre  
Thomas A. Ulasewicz, Esq.  
Sam Laniado, Esq.



July 19, 2019

(Via Email and Regular Mail)  
Sam Laniado, Esq.  
Read and Laniado, LLP  
25 Eagle St.  
Albany, NY 12207

Re: High River Energy Center, LLC  
Case No.: 17-F-0597

Dear Sam:

I would like to clarify something with you on procedural grounds concerning the above-referenced project.

By cover letter dated July 10, 2019, Judy Bartos, Visualization Specialist from TRC Companies, Inc., sent an information request to Town of Florida Supervisor Eric Mead (our client with no apparent cc's) which set forth the following in pertinent part:

“Specifically, this letter request is in regard to the requirements of Sections 1001.20b and 1001.24b(4) of the PSL concerning Exhibit 20 (Cultural Resources) and Exhibit 24 (Visual Impacts) of the Application. As required for Exhibit 24, a Visual Impact Assessment (VIA) shall be provided to the Siting Board to determine the extent and assess the significance of facility visibility. The VIA will, in part, identify sensitive resource areas susceptible to visual changes from the proposed Project and present photographic simulations of the proposed Project’s facilities in relation to selected viewpoints. The VIA also support requirements for Exhibit 20, which takes into account sites or structures listed in or eligible for listing in the National or State Register of Historic Places (NRHP/SRHP)...

In compliance with Article 10 regulations, we are herein requesting your input as part of the Applicant’s consultations with local historic preservation groups, Town of Florida planning representatives, and State agencies, in its selections of important or representative viewpoints that may be subject to Project visibility.”

Any comments or feedback from the Town were requested by July 24, 2019.

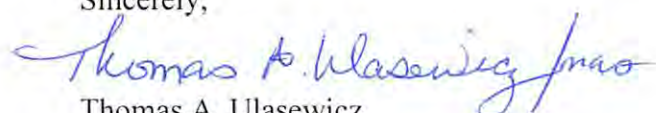
First and foremost, any requests for our client's input for purposes of application development should go directly to Mike Crowe, for appropriate distribution and timely action. One repository (Mike) will assure efficiency and keep Mike and I fully aware of what is going on, which is our job.

Second, it is impossible to meet the requested response date of July 24, 2019. Steve LeFevre, our consultant from Barton & Loguidice, only read the document for the first time this past Tuesday, July 16<sup>th</sup>. Supervisor Mead has to coordinate with other Town officials and the Town Historian, no easy task when everyone has full-time daily jobs.<sup>1</sup> I can see us needing the better part of August at the earliest. When I have a more exact date, I will notify you and Ms. Bartos.

If you agree to this process, kindly just acknowledge same. If you have something else in mind, I will listen, but quite frankly, I cannot think of a more efficient method for which the Town to operate under.

In advance, thank you for your anticipated cooperation.

Sincerely,



Thomas A. Ulasewicz  
TAU/mas

cc: Mike Crowe, Esq. (via email)  
Steve LeFevre, (via email [slefevre@bartonandloguidice.com](mailto:slefevre@bartonandloguidice.com))  
Judy Bartos (via email [JBartos@trccompanies.com](mailto:JBartos@trccompanies.com))  
Eric Mead, Supervisor (via email [emead@co.montgomery.ny.us](mailto:emead@co.montgomery.ny.us);  
[supervisormead@hotmail.com](mailto:supervisormead@hotmail.com))

---

<sup>1</sup> Not that this will hold up my client from complying with this request, but it is worth noting that none of the Stipulations/Exhibits for this application have been finalized.