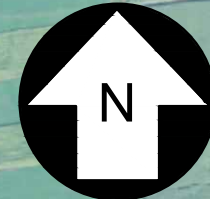
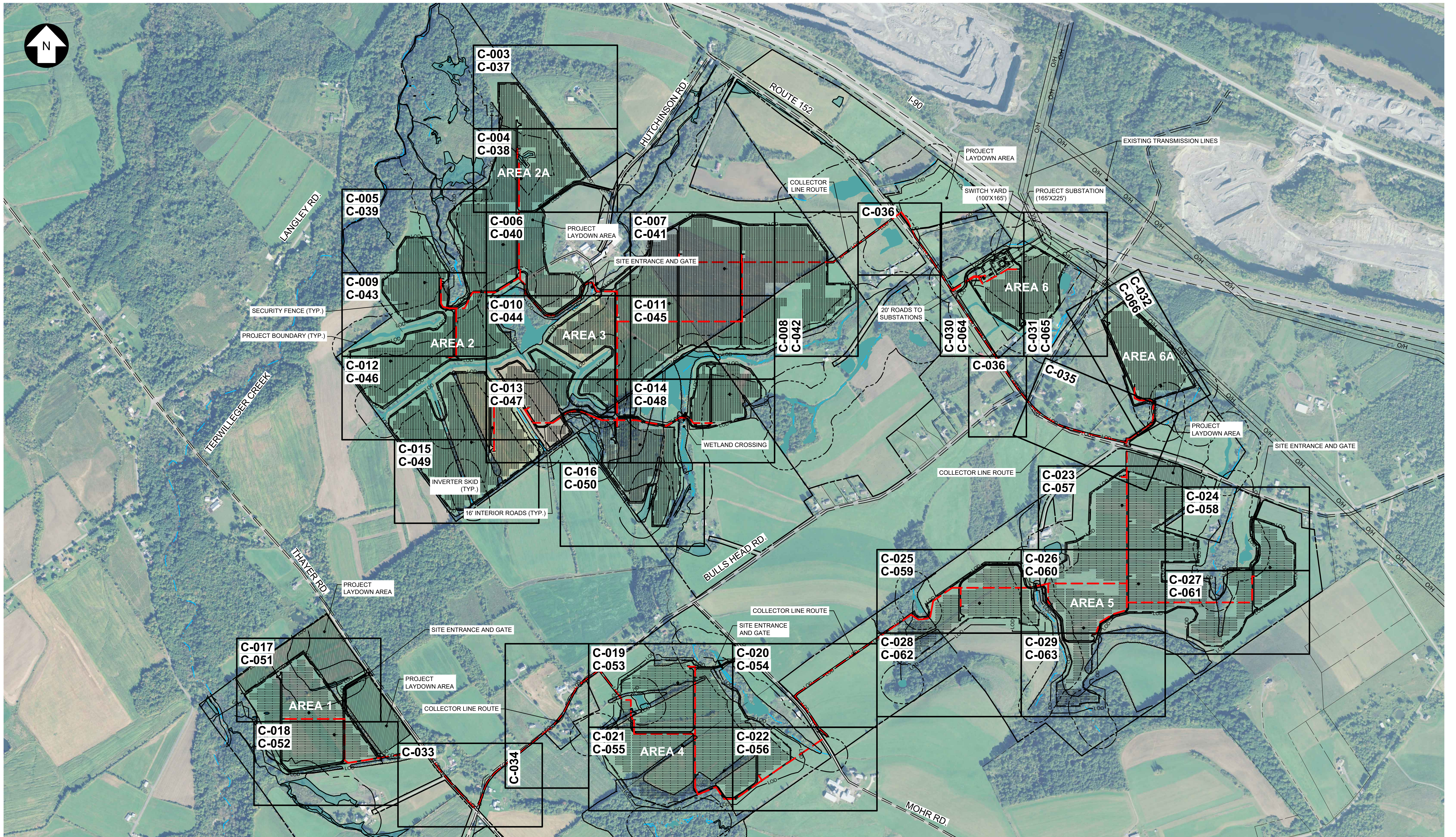


**HIGH RIVER ENERGY PROJECT  
ARTICLE 10 EXHIBIT 24**

**SITE PLAN**

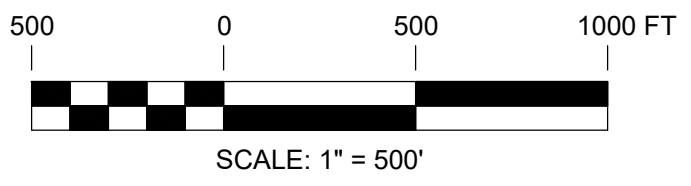
**ATTACHMENT 1**





327851-HIGH RIVER-SITE 001.dwg 2019.09.16

UNDER NEW YORK STATE EDUCATION LAW ARTICLE 145 (ENGINEERING), SECTION 7209 (2), IT IS A VIOLATION OF THE LAW FOR ANY PERSON, UNLESS ACTING UNDER THE DIRECTION OF A LICENSED PROFESSIONAL ENGINEER, TO ALTER THIS DOCUMENT.



**PRELIMINARY**  
NOT FOR CONSTRUCTION



REFERENCE ITEMS		REV	DESCRIPTION	DATE	DES	CHK	APP
		F	ISSUED FOR ARTICLE 10 SUBMISSION	09-12-19	CMW	PGT	
		E	ISSUED FOR CLIENT REVIEW	08-19-19	SEK	PGT	
		D	ISSUED FOR CLIENT REVIEW	08-09-19	SEK	PGT	
		C	ISSUED FOR CLIENT REVIEW	07-19-19	CMW	PGT	

**TRC** 249 Western Avenue  
Augusta, ME 04330

PROJECT NO: 327851

PGT  
DESIGNED  
ESB  
DRAWN  
CHECKED  
APPROVED

PRELIMINARY  
OVERALL SITE LAYOUT & KEY SHEET  
HIGH RIVER ENERGY CENTER  
HIGH RIVER ENERGY CENTER, LLC  
MONTGOMERY CO., NY  
FLORIDA



C-001

REV. F

REVIEW 1  
REVIEW 2

04/08  
DATE  
AS NOTED  
SCALE



**GENERAL NOTES:**

**SURVEY NOTES:**

- PROPERTY BOUNDARY SURVEY INFORMATION PROVIDED BY CT MALE ASSOCIATES DATED JUNE 2019.
- TOPOGRAPHIC SURVEY INFORMATION PROVIDED BY DUDEK DATED MAY 2019.
- WETLAND BOUNDARY INFORMATION PROVIDED BY TRC DATED MAY 2018.
- ZONING BOUNDARY INFORMATION OBTAINED FROM THE TOWN OF FLORIDA ZONING MAPS.
- SOILS INFORMATION FROM USDA-NRCS WEB SOIL SURVEY FOR MONTGOMERY COUNTY, NY DATED SEPTEMBER 3, 2018.
- FLOOD ZONE CLASSIFICATION: SITE LIES OUTSIDE THE 0.2% ANNUAL CHANCE FLOODPLAIN (ZONE X); AS SHOWN ON THE FOLLOWING MAPS NUMBERED:  
  
36057C0212E - DATED JANUARY 19, 2018  
36057C0215E - DATED JANUARY 19, 2018  
36057C0216E - DATED JANUARY 19, 2018  
36057C0217E - DATED JANUARY 19, 2018  
36057C0238E - DATED JANUARY 19, 2018
- HORIZONTAL DATUM: NEW YORK STATE PLANE, EAST ZONE, NAD83 U.S. FOOT. VERTICAL DATUM: NAVD88.

**SWPPP NOTE:**

THE EROSION AND SEDIMENTATION CONTROL MEASURES FOR THIS PROJECT SHALL BE IN SUBSTANTIAL COMPLIANCE WITH THE STORMWATER POLLUTION PREVENTION PLAN (SWPPP) PREPARED FOR THE PROJECT IN ACCORDANCE WITH NEW YORK STATE DEPARTMENT OF ENVIRONMENTAL CONSERVATION STATE POLLUTANT DISCHARGE ELIMINATION SYSTEM GENERAL PERMIT FOR STORMWATER DISCHARGES FROM CONSTRUCTION ACTIVITY (GP-0-15-002) OR GP IN EFFECT AT COMMENCEMENT OF CONSTRUCTION ACTIVITIES.

**REMOVAL NOTES:**

- TREES AND OTHER VEGETATION MAY BE REDUCED TO CHIPS BY THE USE OF CHIPPING MACHINES OR STUMP GRINDER AND USED AS REQUIRED FOR EROSION CONTROL. ALL OTHER CHIPS AND WOOD WASTE RESULTING FROM REMOVAL OPERATIONS SHALL BE DISPOSED OF OFF-SITE AT A FACILITY AND IN A MANNER APPROVED BY THE OWNER.
- ALL DEMOLITION WASTE, DEBRIS AND RUBBISH SHALL BE PROPERLY REMOVED FROM THE SITE AS IT OCCURS. ALL MATERIALS SHALL BE PROPERLY DISPOSED OF OFF-SITE IN STRICT ACCORDANCE WITH ALL APPLICABLE LOCAL, STATE AND FEDERAL REGULATIONS.
- TAKE NECESSARY PRECAUTIONS TO AVOID DAMAGE TO EXISTING IMPROVEMENTS AND FACILITIES TO REMAIN IN PLACE. CONTRACTOR IS RESPONSIBLE FOR REPAIR AND REPLACEMENT OF DAMAGED ITEMS AS A RESULT OF CONSTRUCTION OF THE PROPOSED IMPROVEMENTS.

**SAFETY NOTE:**

PORTIONS OF THE WORK WILL BE CARRIED OUT NEAR AND UNDER ENERGIZED EQUIPMENT. EXTREME CAUTION IS REQUIRED AT ALL TIMES. THE CONTRACTOR SHALL STRICTLY FOLLOW ALL NATIONAL GRID SAFETY REQUIREMENTS WHEN WORKING WITHIN NATIONAL GRID RIGHT OF WAY. FAILURE TO DO SO WILL RESULT IN TERMINATION.

**EARTHWORK:**

UNLESS INDICATED OTHERWISE, REFER TO THE LATEST EDITION OF THE NEW YORK STATE DEPARTMENT OF TRANSPORTATION, STANDARD SPECIFICATIONS FOR CONSTRUCTION AND MATERIALS FOR GENERAL REQUIREMENTS, PRODUCTS AND EXECUTION RELATED TO CONSTRUCTION OF BUT NOT LIMITED TO: CLEARING, GRUBBING, ROADS, UTILITY TRENCH EXCAVATION, BORROW, SUBGRADE, SUBBASE, GRANULAR FILL, AND AGGREGATE BASE.

**PROJECT CONSTRUCTION SEQUENCING NOTES:**

THE CONTRACTOR SHALL SUBMIT A CONSTRUCTION SEQUENCING OR CONSTRUCTION PHASING PLAN FOR OWNER APPROVAL THAT COMPLIES WITH PERMITTING REQUIREMENTS. THE PLAN SHALL SHOW THAT ACTIVE LAND DISTURBANCE ACTIVITIES WILL BE LIMITED TO LESS THAN FIVE (5) ACRES IN SIZE AND SHALL DISCUSS BUT IS NOT LIMITED TO THE FOLLOWING:

- THE CONTRACTOR SHALL COMPLY WITH THE REQUIREMENTS FOR TEMPORARY AND PERMANENT EROSION AND SEDIMENT CONTROL MEASURES AS INDICATED AND THE NEW YORK STATE STANDARDS AND SPECIFICATIONS FOR EROSION AND SEDIMENT CONTROL.
- PRIOR TO THE START OF ONSITE EARTHWORK ACTIVITIES, THE CONTRACTOR SHALL ESTABLISH THE CONSTRUCTION WORKSPACE LIMITS AND IDENTIFY AND MARK SENSITIVE RESOURCES.
- THE CONTRACTOR SHALL INSTALL ALL TEMPORARY EROSION AND SEDIMENT CONTROL BEST MANAGEMENT PRACTICES (BMPs) IN ORDER TO PROTECT DOWN GRADIENT AREAS.
- AFTER PERMANENT EROSION AND SEDIMENT CONTROL MEASURES ARE INSTALLED AND FUNCTIONING ON THE CURRENT CONSTRUCTION PHASE, THE CONTRACTOR SHALL OBTAIN OWNER APPROVAL PRIOR TO BEGINNING EARTHWORK ON THE SUBSEQUENT CONSTRUCTION PHASE.

EXISTING	LEGEND	PROPOSED
	PROPERTY/ROW LINE	
	SETBACK LINE	
	EASEMENT LINE	
	LIMIT OF DISTURBANCE	
	EDGE OF PAVEMENT	
	CURBING	
	EDGE OF GRAVEL	
	CONTOUR MINOR	
	CONTOUR MAJOR	
	BUILDING	
	STONEWALL	
	TREELINE	
	CHAIN LINK FENCE	
	CULVERT	
	OVERHEAD ELECTRIC	
	UTILITY POLE	
	UTILITY POLE W/ GUY	
	UTILITY POLE W/ LIGHT	
	LIGHT POLE	
	BOLLARD	
	SOILS	
	STREAM	
	200' STREAM BUFFER	
	EDGE OF WETLANDS	
	200' WETLAND BUFFER	
	DELINEATED WETLANDS/WATERBODIES	
	DRAINAGE FLOW	
	INFILTRATION TRENCH	
	SIGN	
	MAILBOX	
	STONE CHECK DAM	
	SILT FENCE	
	COLLECTOR LINE	
	TEST PIT	
	SOIL BORING	
	VERNAL POOL	
	STABILIZED PERVIOUS ROAD SECTION	

HIGH RIVER SYSTEM SPECIFICATIONS	
SYSTEM STC DC RATING	113.15 (MW)
SYSTEM AC CAPACITY	97.02(MW)
SYSTEM AC RATING AT POI	90.00
DC/AC RATIO AT POI	1.26
MODULE MODEL	JINKO 415W / SAFE HARBOR 370W
MODULE STC DC RATING	415/ 370 (W)
MODULE COUNT	273520 (265460 / 8060)
MODULES PER STRING	26
STRING COUNT	10520
3 STRING TRACKER	1468
2 STRING TRACKER	421
1 STRING TRACKER	464
FIXED TILT (2 STRINGS PER ARRAY)	2405
INVERTER MODEL	PE FS3350MVA 1500V
INVERTER RATING	3.465 (MW)
QUANTITY OF INVERTERS	28.00
TRANSFORMER RATING	3.75 (MVA)
QUANTITY OF TRANSFORMERS	28.00
DC SYSTEM VOLTAGE	1500 (V)
INTERCONNECTION VOLTAGE	34.5/115 (KV)
TRANSMISSION LENGTH	500 (FEET)
RACKING SYSTEM	FIXED TILT (2x10 PORTRAIT) - (117000 / 8060 MODULES TRACKER (1 HIGH IN PORTRAIT) - (148460 MODULES)
MODULE TILT	FIXED - 25° TRACKER - -60° TO 60°
AZIMUTH	FIXED - 180° TRACKER - 0° AXIS
ROW-TO-ROW SPACING (LF)	FIXED - 15.67 TRACKER - 12.96
ASHRAE 2% DESIGN BULB TEMP MAX	31° (C)
ASHRAE EXTREME ANNUAL MEAN MINIMUM DRY-BULB TEMP	-23° (C)
PROPERTY AREA	1124.76 (AC)
FENCED AREA	480 (AC)
FENCING LENGTH	80,771 (LF)
ROADS	34,633 (LF)

CUT AND FILL REPORT			
NAME	CUT	FILL	NET
	(Cu. Yd.)	(Cu. Yd.)	(Cu. Yd.)
AREA 1	96.86	1577.44	1480.58<Fill>
AREA 2 & 2A	38430.28	54763.78	16333.49<Fill>
AREA 3	3102.80	15364.69	12261.90<Fill>
AREA 4	237587.79	237935.03	347.25<Fill>
AREA 5	2240.28	8681.78	6441.49<Fill>
AREA 6	395.64	13698.90	13303.26<Fill>
AREA 6A	40.72	1745.73	1705.01<Fill>

327851-HIGH RIVER-GEN-003.dwg 2018.08.13

PRELIMINARY  
NOT FOR CONSTRUCTION

UNDER NEW YORK STATE EDUCATION LAW ARTICLE 145 (ENGINEERING), SECTION 7209 (2), IT IS A VIOLATION OF THE LAW FOR ANY PERSON, UNLESS ACTING UNDER THE DIRECTION OF A LICENSED PROFESSIONAL ENGINEER, TO ALTER THIS DOCUMENT.

249 Western Avenue Augusta, ME 04330		PROJECT NO: 327851				
		REV	DESCRIPTION	DATE	DES	CHK
F	ISSUED FOR ARTICLE 10 SUBMISSION	09-12-19	CMW	PGT		
E	ISSUED FOR CLIENT REVIEW	08-20-19	SEK	PGT		
D	ISSUED FOR CLIENT REVIEW	08-09-19	CMW	PGT		
C	ISSUED FOR CLIENT REVIEW	07-19-19	CWM	PGT		

PGT DESIGNED  ESB DRAWN  PMM CHECKED  APPROVED	PRELIMINARY GENERAL NOTES & LEGEND HIGH RIVER SOLAR NEXTERA ENERGY MONTGOMERY CO., NY	FLORIDA
REVIEW 1 DATE REVIEW 2	04/11 DATE AS NOTED SCALE	
	G-003	REV. F

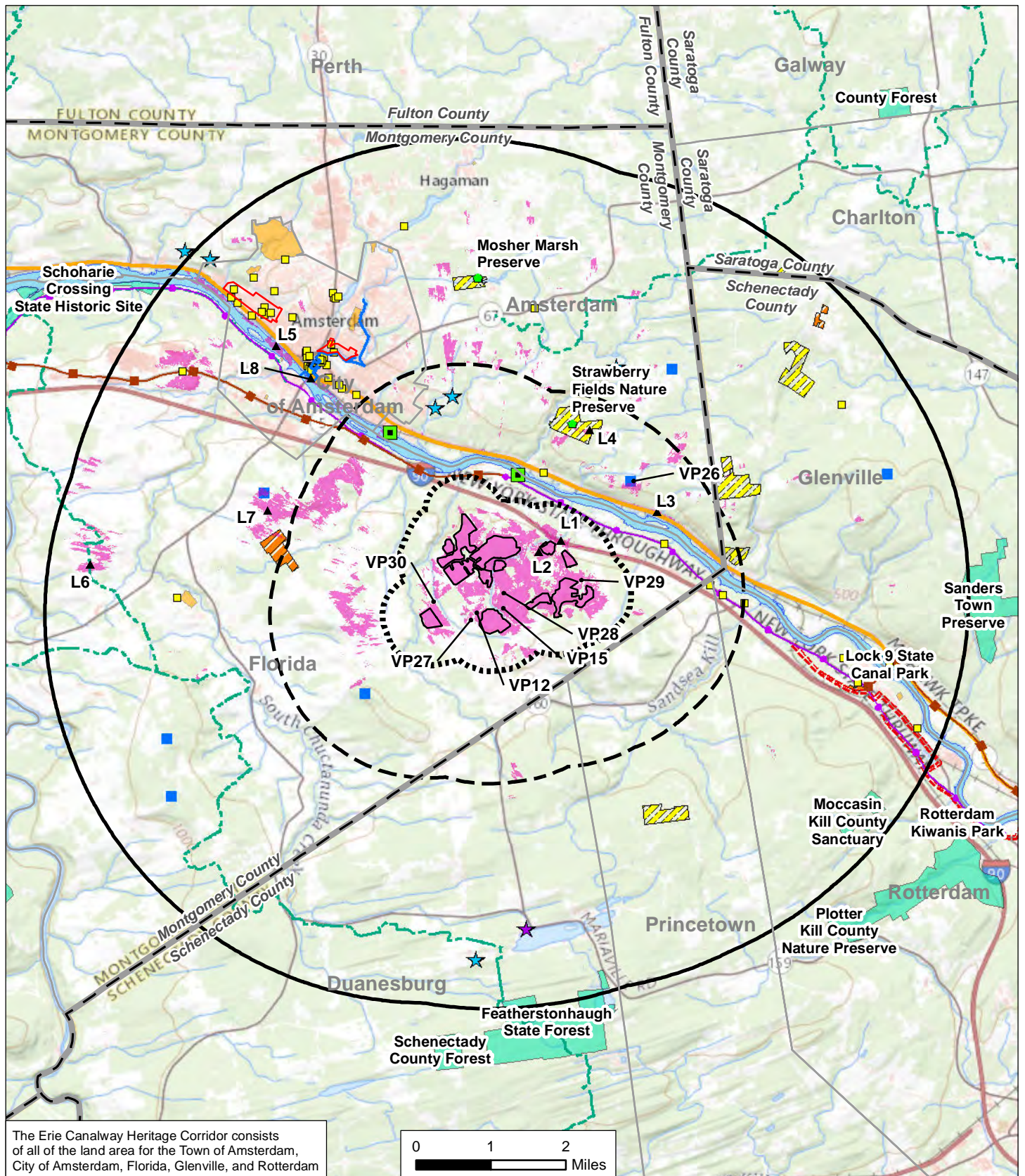


**HIGH RIVER ENERGY PROJECT  
ARTICLE 10 EXHIBIT 24**

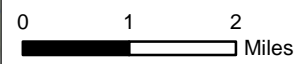
**MAPS**

**ATTACHMENT 2**





The Erie Canalway Heritage Corridor consists of all of the land area for the Town of Amsterdam, City of Amsterdam, Florida, Glenville, and Rotterdam



- Simulation Viewpoint (VP)
- ▲ Line of Sight Location (L)
- Project Fence Line
- National Register of Historic Places Site
- ▭ Larger Historic District
- Historic\_Eligible
- BIKEWAY
- Erie Canal Trailway
- State Bikeway Route 5
- Mohawk Hudson BikeHike Trail
- Scenic Byway Revolutionary Trail
- Local Park
- Snowmobile Trail
- Erie Canalway
- High Point Location
- Federal-State-County Recreation
- County Boundary
- Municipal Boundary
- Preserve
- Boat Launch
- Predicted Visibility
- Chuctanunga Creek Trail
- CONSERVATION EASEMENT
- Federal
- Mohawk Hudson Land Consvr.
- COMMUNITY CONCERN
- ★ Local Cemeteries
- ★ Mariaville B&B

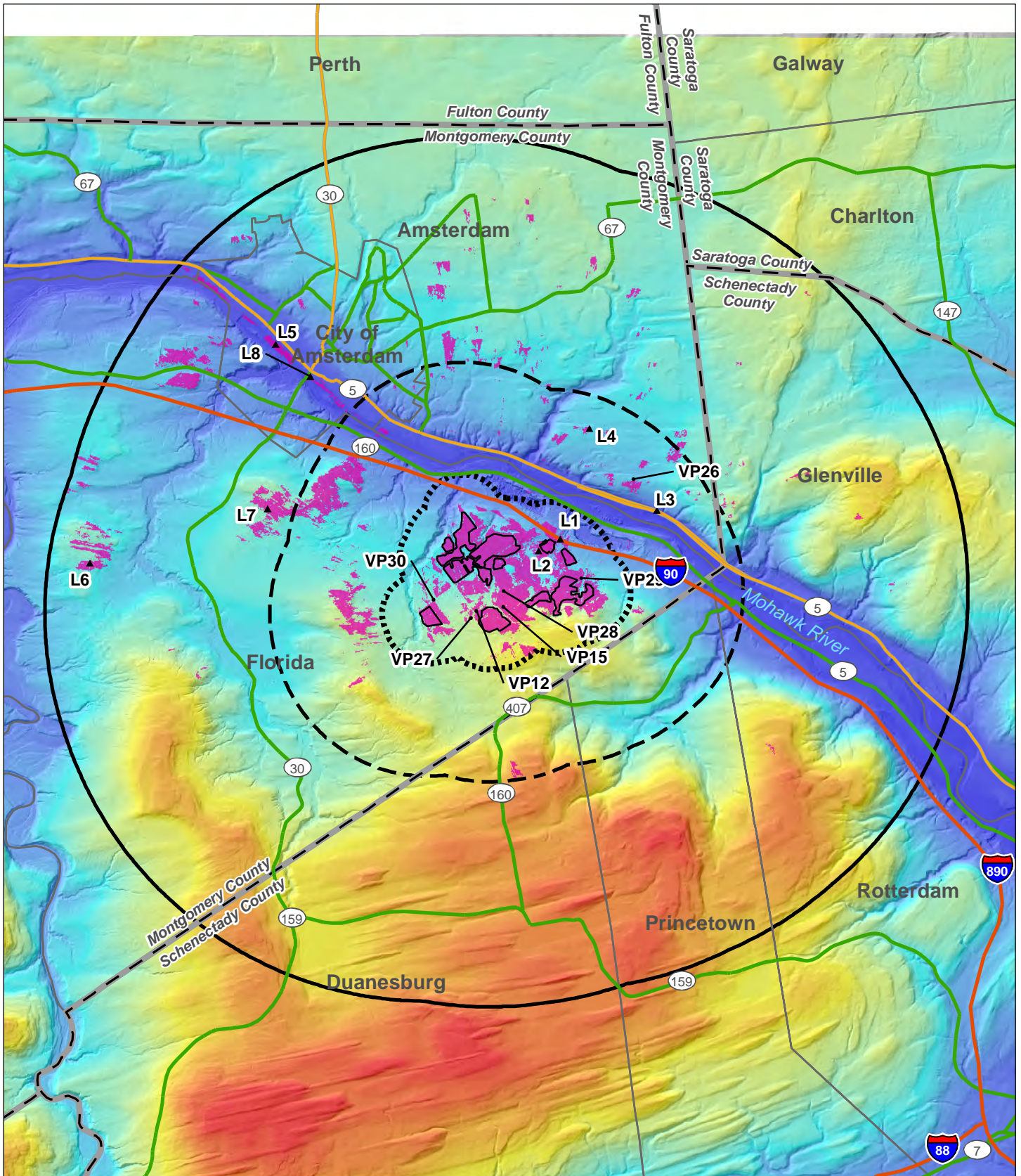


**OVERVIEW MAP  
WITH VISUAL RESOURCES  
HIGH RIVER  
ENERGY CENTER  
TOWN OF FLORIDA, NY**

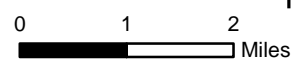
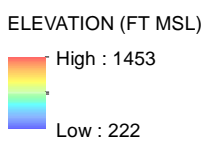
FIGURE 1 | SEPTEMBER 2019

Map Produced by TRC





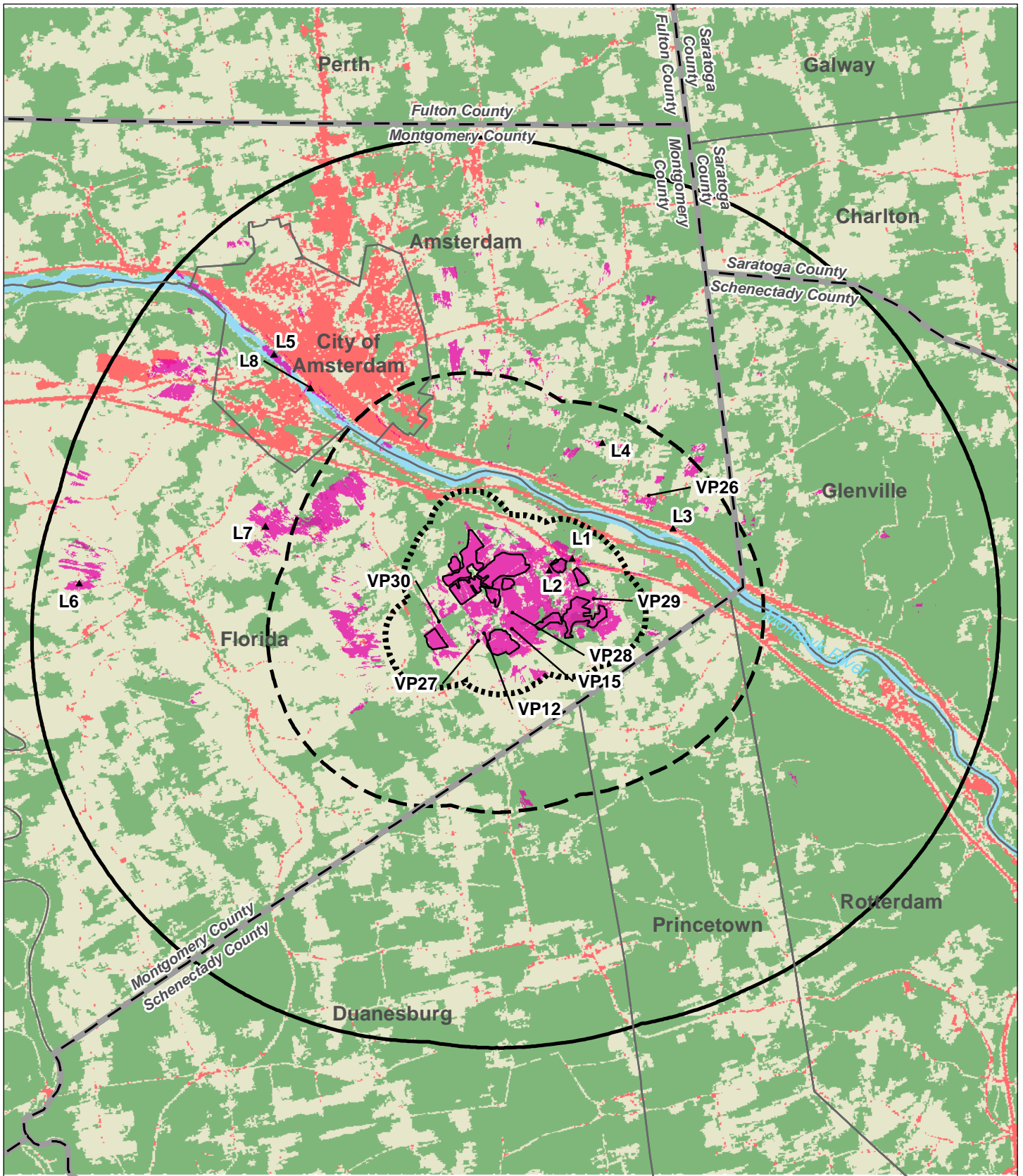
- Simulation Viewpoint (VP)
- ▲ Line of Sight Location (L)
- Project Fence Line
- ▭ Half Mile Radius
- ▭ Two Mile Radius
- ▭ Five Mile Radius
- Predicted Visibility



**GRADUATED ELEVATION MAP**  
**HIGH RIVER**  
**ENERGY CENTER**  
**TOWN OF FLORIDA, NY**


FIGURE 2 | SEPTEMBER 2019  
 Map Produced by **TRC**






<ul style="list-style-type: none"> <li>• Simulation Viewpoint (VP)</li> <li>▲ Line of Sight Location (L)</li> <li>— Project Fence Line</li> <li>⊖ Half Mile Radius</li> <li>⊖ Two Mile Radius</li> <li>⊖ Five Mile Radius</li> <li>■ Predicted Visibility</li> </ul>	<p><b>LANDSCAPE SIMILARITY ZONES</b></p> <ul style="list-style-type: none"> <li>Zone 1 - Agricultural/Open Field</li> <li>Zone 2 - Forested</li> <li>Zone 3 - Developed</li> <li>Zone 4 - Mohawk River Corridor</li> </ul>
--	--

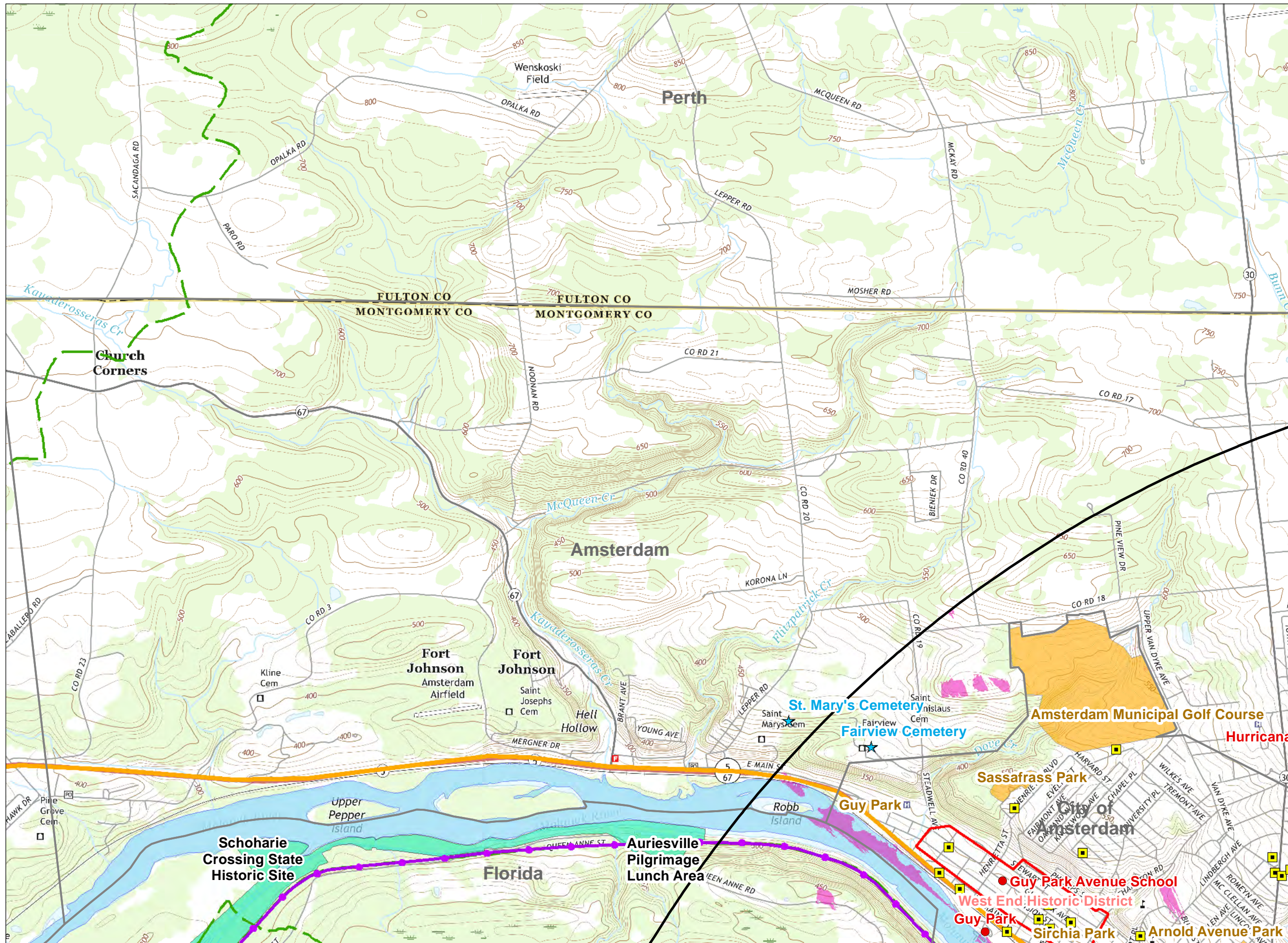
0 1 2 Miles

  
**LANDSCAPE SIMILARITY ZONES**  
**HIGH RIVER ENERGY CENTER**  
**TOWN OF FLORIDA, NY**

---

FIGURE 3 | SEPTEMBER 2019  
 Map Produced by 

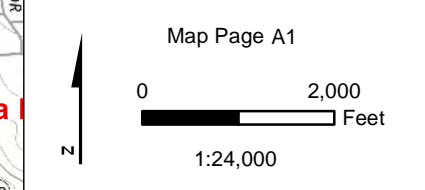




A1	A2	A3
B1	B2	B3
C1	C2	C3
D1	D2	D3

- Simulation Viewpoint (VP)
- ▲ Line of Sight Location (L)
- Project Fence Line
- ▭ Predicted Visibility
- ▭ Municipal Boundary
- National Register of Historic Places Site
- ▭ Larger Historic District
- ▭ Historic\_Eligible
- ▭ Revolutionary Trail Scenic Byway
- ▭ Erie Canal Trailway
- ▭ State Bikeway Route 5
- ▭ Mohawk Hudson BikeHike Trail
- ▭ Strawberry Fields Trails
- ▭ Preserve
- ▭ Boat Launch
- ▭ Chuctanunga Creek Trail
- ▭ Local Park
- ▭ Federal-State-County Recreation
- ▭ Snowmobile Trail
- ▭ Erie Canalway Heritage Corridor
- ▭ High Point Location
- CONSERVATION EASEMENT
- ▭ Federal
- ▭ Mohawk Hudson Land Conservancy
- COMMUNITY CONCERN
- ★ Local Cemeteries
- ★ Mariaville Bed & Breakfast
- DISTANCE ZONES
- ▭ Half Mile Radius
- ▭ Two Mile Radius
- ▭ Five Mile Radius

The Erie Canalway Heritage Corridor consists of all of the land area for the Town of Amsterdam, City of Amsterdam, Florida, Glennville, and Rotterdam



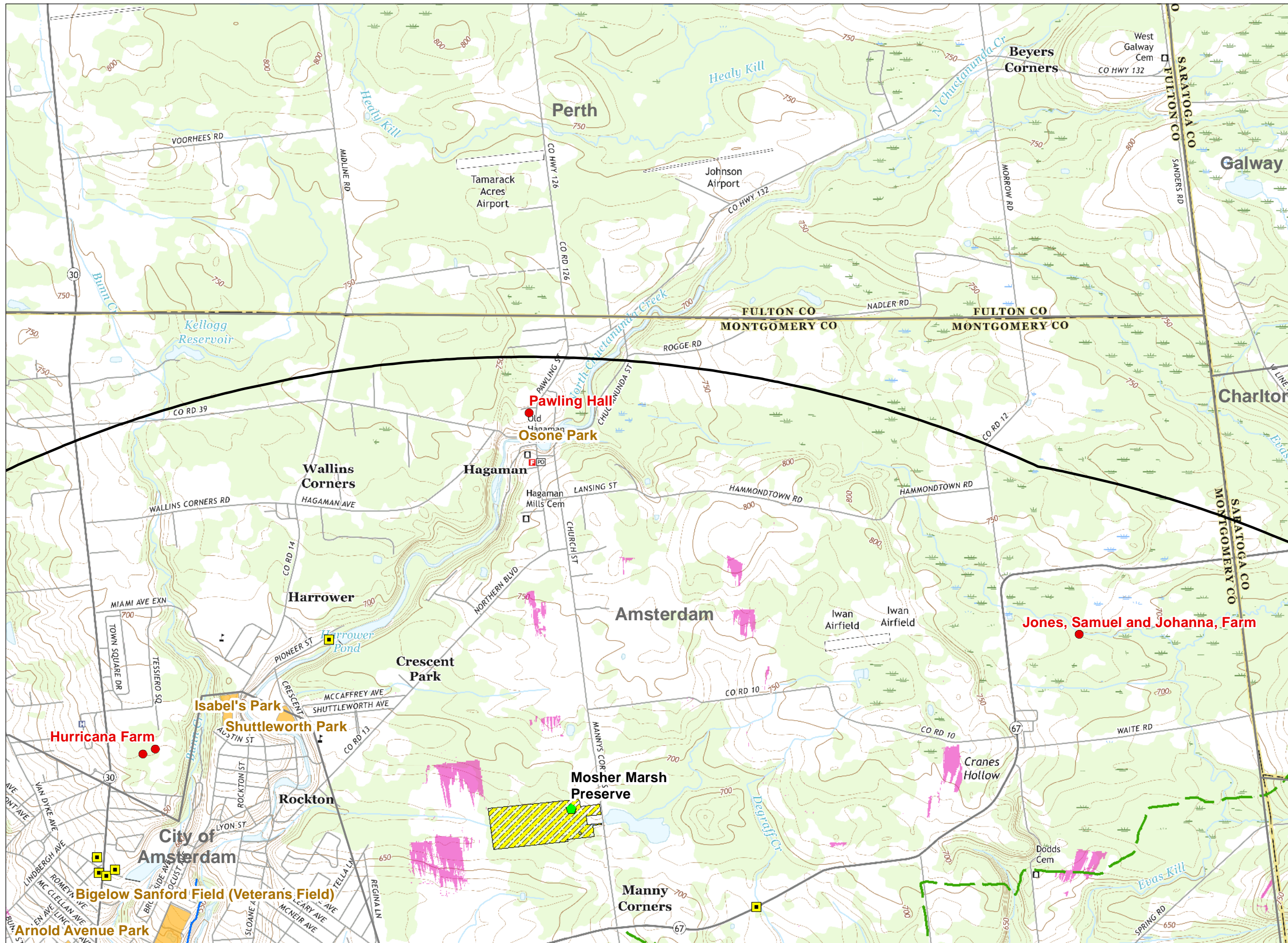
Base Map: USGS 2016 GeoPDF acquired at <https://viewer.nationalmap.gov/>



**VIEWSHED ANALYSIS**  
**HIGH RIVER ENERGY CENTER**  
**TOWN OF FLORIDA, NY**

C:\Users\jbartos\Work\Docs\276520\_NextEra\_Solar\_HighRiver\VISUAL\mxd\VIEWHR\_Fig 4 Viewshed Map\_2019-09-24.mxd





A1	A2	A3
B1	B2	B3
C1	C2	C3
D1	D2	D3

- Simulation Viewpoint (VP)
- ▲ Line of Sight Location (L)
- Project Fence Line
- ▭ Predicted Visibility
- ▭ Municipal Boundary
- National Register of Historic Places Site
- ▭ Larger Historic District
- ▭ Historic\_Eligible
- ▭ Revolutionary Trail Scenic Byway
- ▭ Erie Canal Trailway
- ▭ State Bikeway Route 5
- ▭ Mohawk Hudson BikeHike Trail
- ▭ Strawberry Fields Trails
- ▭ Preserve
- ▭ Boat Launch
- ▭ Chuctanunga Creek Trail
- ▭ Local Park
- ▭ Federal-State-County Recreation
- ▭ Snowmobile Trail
- ▭ Erie Canalway Heritage Corridor
- ▭ High Point Location
- CONSERVATION EASEMENT
- ▭ Federal
- ▭ Mohawk Hudson Land Conservancy
- COMMUNITY CONCERN
- ★ Local Cemeteries
- ★ Mariaville Bed & Breakfast
- DISTANCE ZONES
- ▭ Half Mile Radius
- ▭ Two Mile Radius
- ▭ Five Mile Radius

The Erie Canalway Heritage Corridor consists of all of the land area for the Town of Amsterdam, City of Amsterdam, Florida, Glenville, and Rotterdam

Map Page A2

0 2,000 Feet

1:24,000

Base Map: USGS 2016 GeoPDF acquired at <https://viewer.nationalmap.gov/>

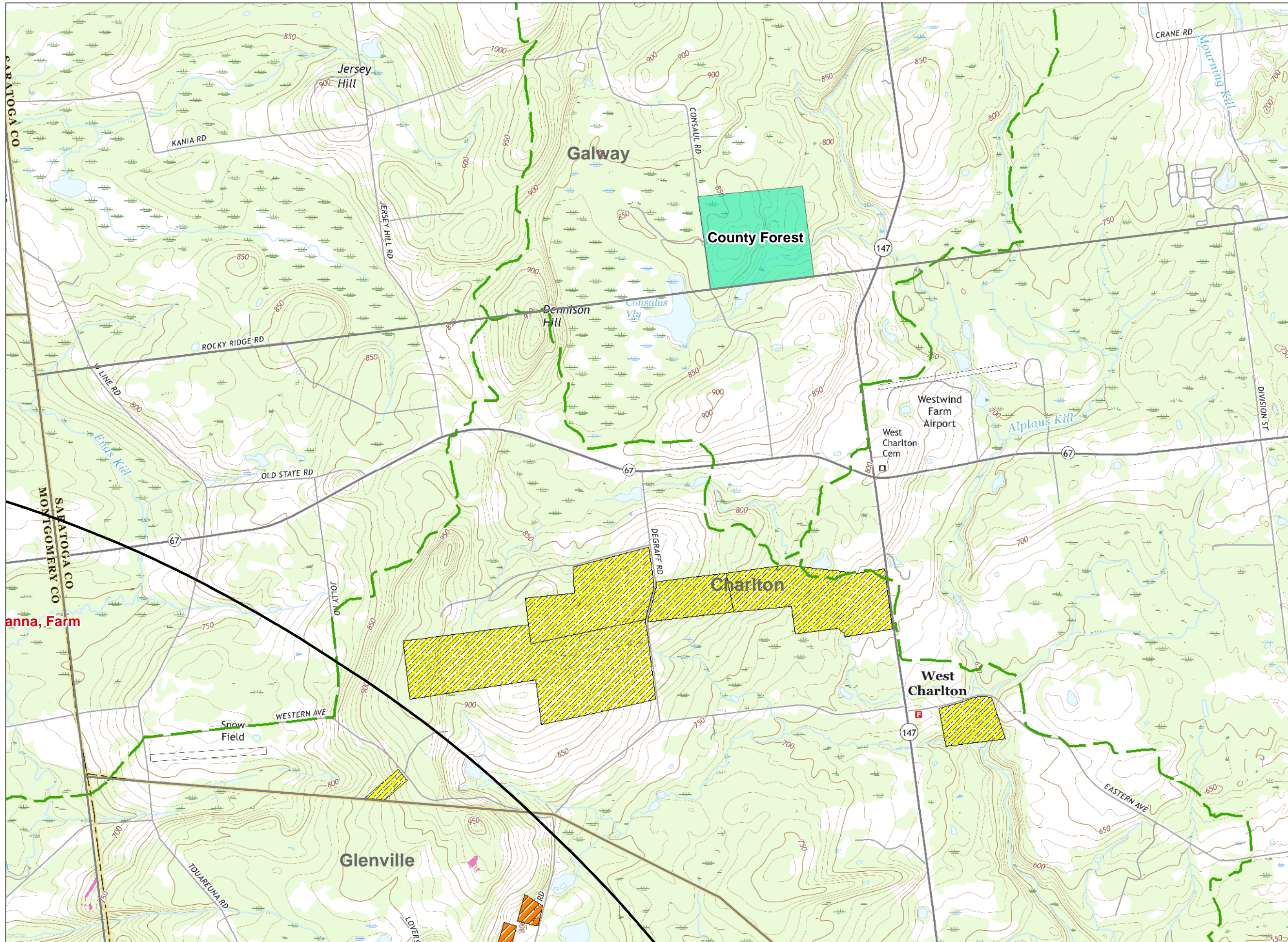
**NEXTERA ENERGY**

**VIEWSHED ANALYSIS  
HIGH RIVER ENERGY CENTER  
TOWN OF FLORIDA, NY**

FIGURE 4 | SEPTEMBER 2019

Map Produced by **TRC**

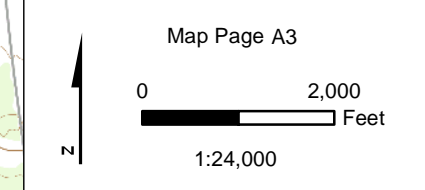




A1	A2	<b>A3</b>
B1	B2	B3
C1	C2	C3
D1	D2	D3

- Simulation Viewpoint (VP)
- ▲ Line of Sight Location (L)
- Project Fence Line
- ▭ Predicted Visibility
- ▭ Municipal Boundary
- National Register of Historic Places Site
- ▭ Larger Historic District
- ▭ Historic\_Eligible
- ▭ Revolutionary Trail Scenic Byway
- ▭ Erie Canal Trailway
- ▭ State Bikeway Route 5
- ▭ Mohawk Hudson BikeHike Trail
- ▭ Strawberry Fields Trails
- ▭ Preserve
- ▭ Boat Launch
- ▭ Chuctanunga Creek Trail
- ▭ Local Park
- ▭ Federal-State-County Recreation
- ▭ Snowmobile Trail
- ▭ Erie Canalway Heritage Corridor
- ▭ High Point Location
- CONSERVATION EASEMENT
- ▭ Federal
- ▭ Mohawk Hudson Land Conservancy
- COMMUNITY CONCERN
- ★ Local Cemeteries
- ★ Mariaville Bed & Breakfast
- DISTANCE ZONES
- ▭ Half Mile Radius
- ▭ Two Mile Radius
- ▭ Five Mile Radius

The Erie Canalway Heritage Corridor consists of all of the land area for the Town of Amsterdam, City of Amsterdam, Florida, Glenville, and Rotterdam



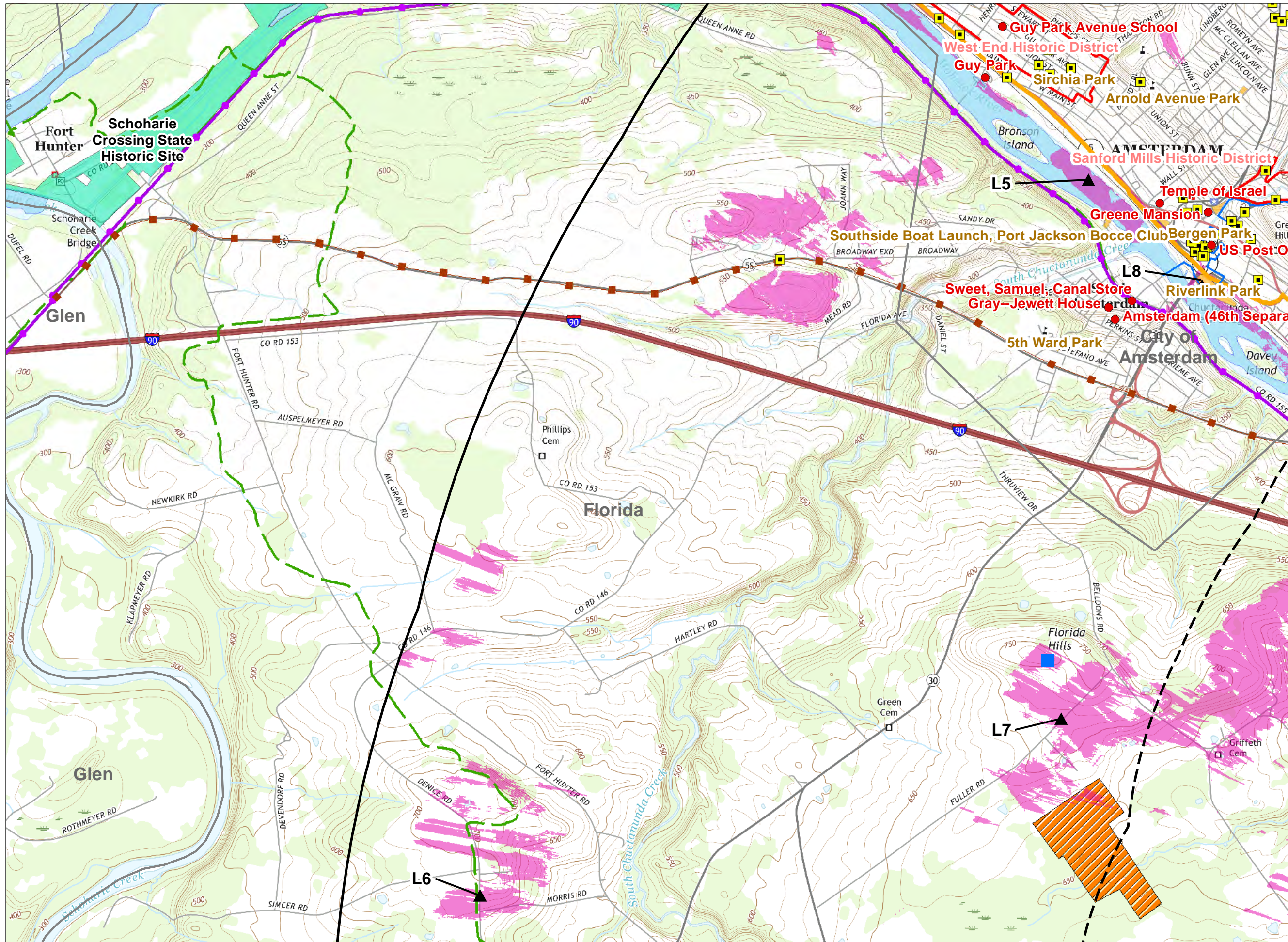
Base Map: USGS 2016 GeoPDF acquired at <https://viewer.nationalmap.gov/>



**VIEWSHED ANALYSIS**  
**HIGH RIVER**  
**ENERGY CENTER**  
**TOWN OF FLORIDA, NY**

C:\Users\bartos\Work\Docs\276520\_NextEra\_Solar\_HighRiver\VISUAL\mxd\VIEWHR\_Fig 4 Viewshed Map\_2019-09-24.mxd

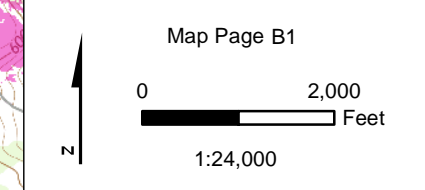




A1	A2	A3
<b>B1</b>	B2	B3
C1	C2	C3
D1	D2	D3

- Simulation Viewpoint (VP)
- ▲ Line of Sight Location (L)
- Project Fence Line
- Predicted Visibility
- Municipal Boundary
- National Register of Historic Places Site
- Larger Historic District
- Historic Eligible
- Revolutionary Trail Scenic Byway
- Erie Canal Trailway
- State Bikeway Route 5
- Mohawk Hudson BikeHike Trail
- Strawberry Fields Trails
- Preserve
- Boat Launch
- Chuctanunga Creek Trail
- Local Park
- Federal-State-County Recreation
- Snowmobile Trail
- Erie Canalway Heritage Corridor
- High Point Location
- CONSERVATION EASEMENT
- Federal
- Mohawk Hudson Land Conservancy
- COMMUNITY CONCERN
- ★ Local Cemeteries
- ★ Mariaville Bed & Breakfast
- DISTANCE ZONES
- Half Mile Radius
- Two Mile Radius
- Five Mile Radius

The Erie Canalway Heritage Corridor consists of all of the land area for the Town of Amsterdam, City of Amsterdam, Florida, Glenville, and Rotterdam



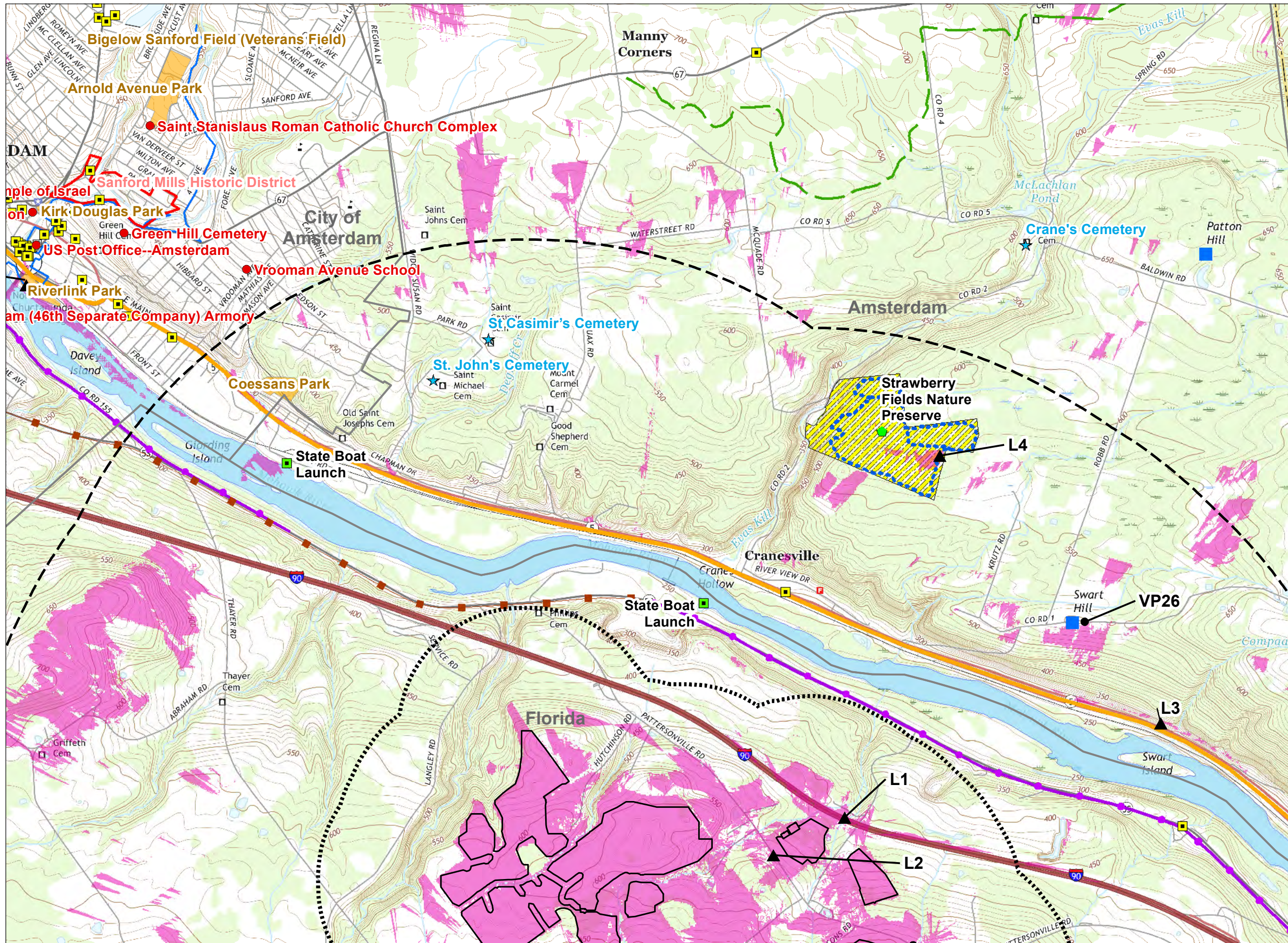
Base Map: USGS 2016 GeoPDF acquired at <https://viewer.nationalmap.gov/>



**VIEWSHED ANALYSIS**  
**HIGH RIVER ENERGY CENTER**  
**TOWN OF FLORIDA, NY**

C:\Users\bartos\WorkDocs\276520\_NextEra\_Solar\_HighRiver\VISUAL\mxd\VIEWHR\_Fig 4 Viewshed Map\_2019-09-24.mxd

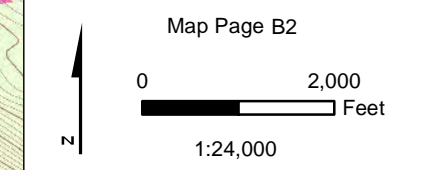




A1	A2	A3
B1	B2	B3
C1	C2	C3
D1	D2	D3

- Simulation Viewpoint (VP)
- ▲ Line of Sight Location (L)
- Project Fence Line
- Predicted Visibility
- Municipal Boundary
- National Register of Historic Places Site
- Larger Historic District
- Historic\_Eligible
- Revolutionary Trail Scenic Byway
- Erie Canal Trailway
- State Bikeway Route 5
- Mohawk Hudson BikeHike Trail
- Strawberry Fields Trails
- Preserve
- Boat Launch
- Chuctanunga Creek Trail
- Local Park
- Federal-State-County Recreation
- Snowmobile Trail
- Erie Canalway Heritage Corridor
- High Point Location
- CONSERVATION EASEMENT
- Federal
- Mohawk Hudson Land Conservancy
- COMMUNITY CONCERN
- ★ Local Cemeteries
- ★ Mariaville Bed & Breakfast
- DISTANCE ZONES
- Half Mile Radius
- Two Mile Radius
- Five Mile Radius

The Erie Canalway Heritage Corridor consists of all of the land area for the Town of Amsterdam, City of Amsterdam, Florida, Glenville, and Rotterdam



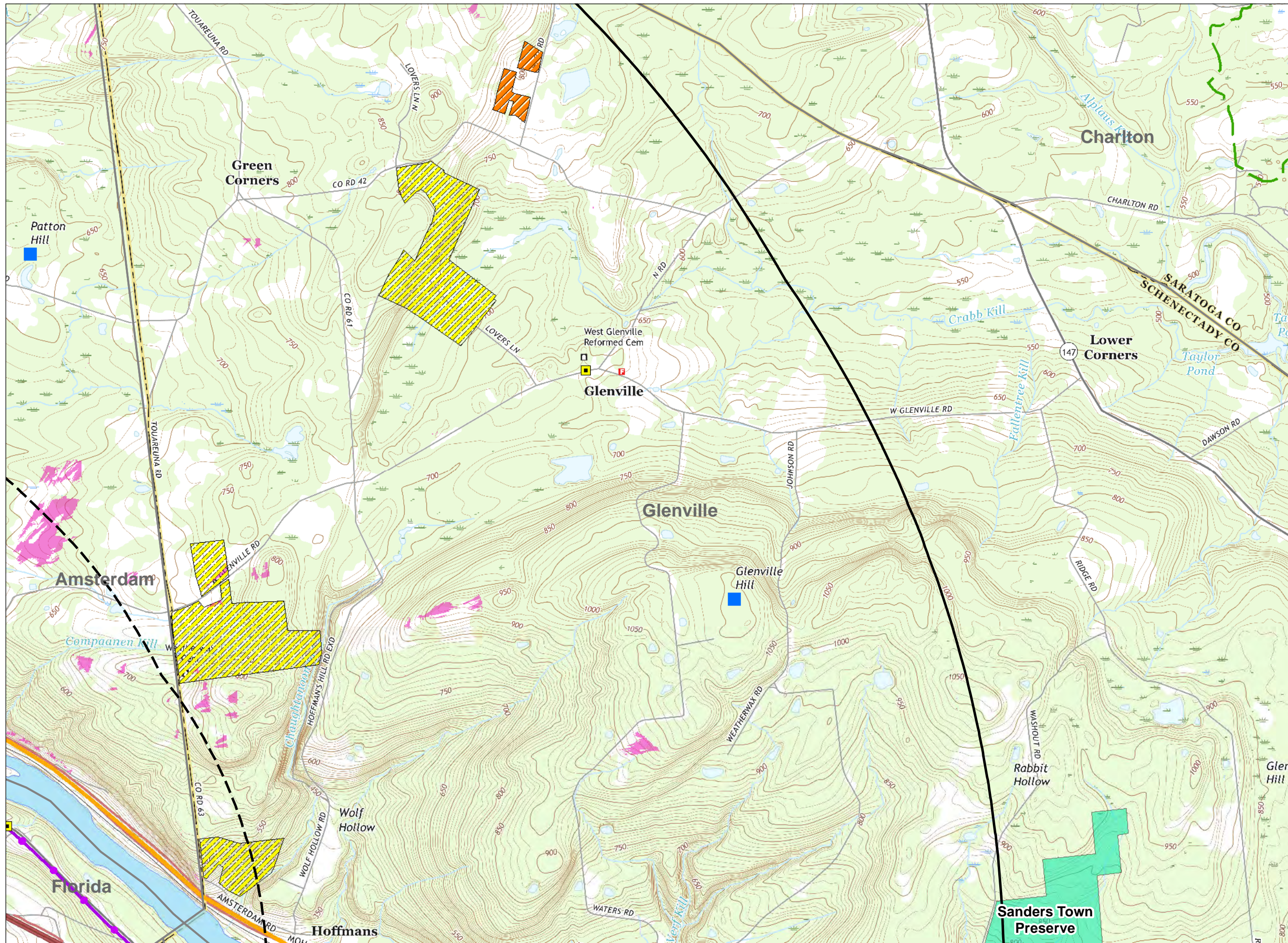
Base Map: USGS 2016 GeoPDF acquired at <https://viewer.nationalmap.gov/>



**VIEWSHED ANALYSIS**  
**HIGH RIVER ENERGY CENTER**  
**TOWN OF FLORIDA, NY**

C:\Users\jbartos\WorkDocs\276520\_NextEra\_Solar\_HighRiver\VISUAL\mxd\VIEWHR\_Fig 4 Viewshed Map\_2019-09-24.mxd

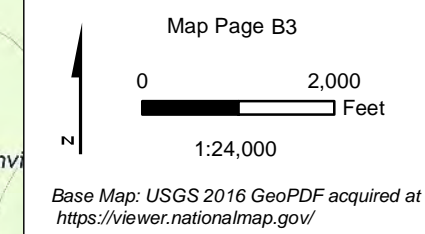




A1	A2	A3
B1	B2	<b>B3</b>
C1	C2	C3
D1	D2	D3

- Simulation Viewpoint (VP)
- ▲ Line of Sight Location (L)
- Project Fence Line
- ▭ Predicted Visibility
- ▭ Municipal Boundary
- National Register of Historic Places Site
- ▭ Larger Historic District
- ▭ Historic\_Eligible
- ▭ Revolutionary Trail Scenic Byway
- ▭ Erie Canal Trailway
- ▭ State Bikeway Route 5
- ▭ Mohawk Hudson BikeHike Trail
- ▭ Strawberry Fields Trails
- ▭ Preserve
- ▭ Boat Launch
- ▭ Chuctanunga Creek Trail
- ▭ Local Park
- ▭ Federal-State-County Recreation
- ▭ Snowmobile Trail
- ▭ Erie Canalway Heritage Corridor
- ▭ High Point Location
- CONSERVATION EASEMENT
- ▭ Federal
- ▭ Mohawk Hudson Land Conservancy
- COMMUNITY CONCERN
- ★ Local Cemeteries
- ★ Mariaville Bed & Breakfast
- DISTANCE ZONES
- ▭ Half Mile Radius
- ▭ Two Mile Radius
- ▭ Five Mile Radius

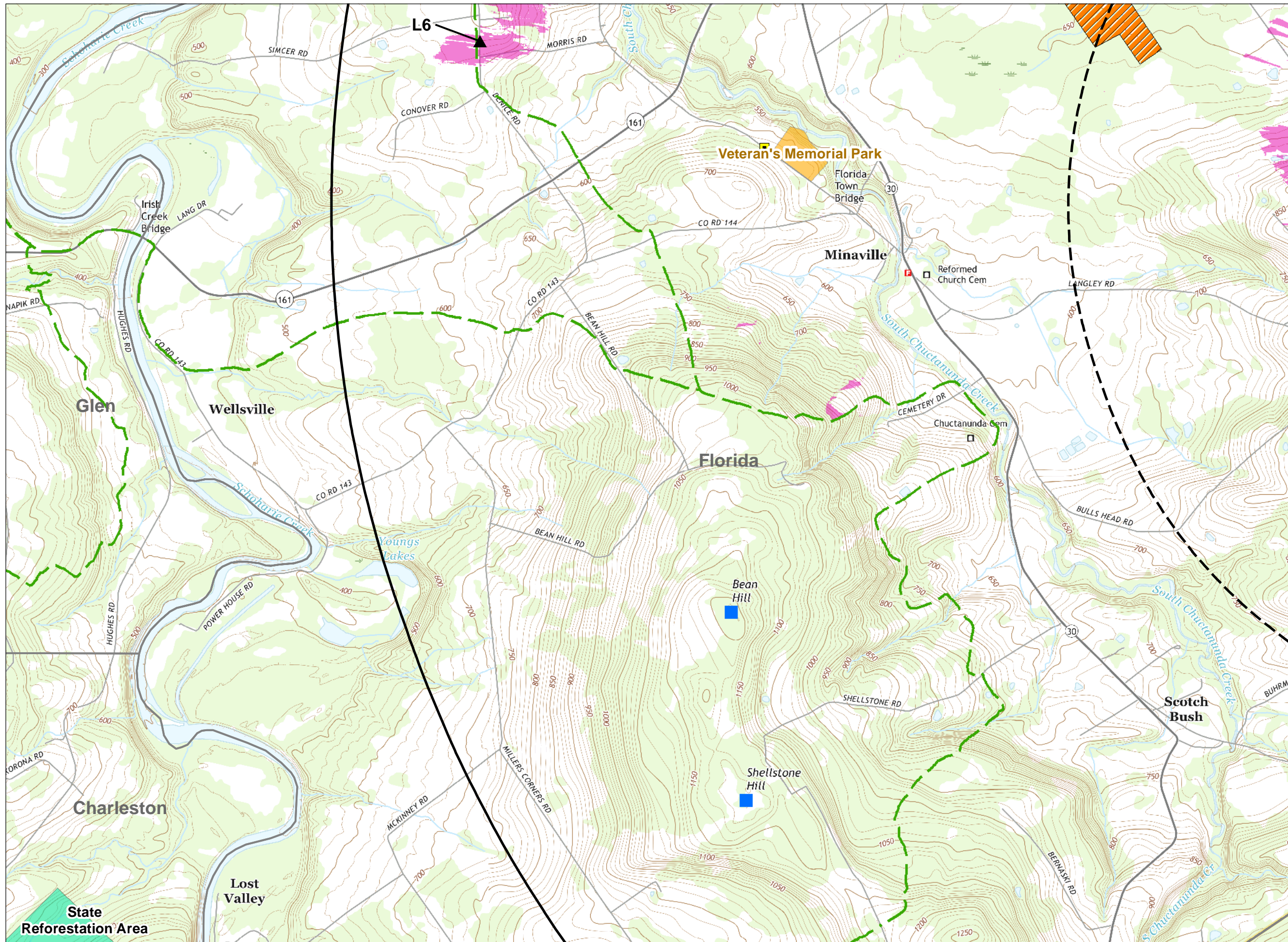
The Erie Canalway Heritage Corridor consists of all of the land area for the Town of Amsterdam, City of Amsterdam, Florida, Glenville, and Rotterdam



**VIEWSHED ANALYSIS**  
**HIGH RIVER ENERGY CENTER**  
**TOWN OF FLORIDA, NY**

C:\Users\jbartos\Work\Docs\276520\_NextEra\_Solar\_HighRiver\VISUAL\mxd\VIEWHR\_Fig 4 Viewshed Map\_2019-09-24.mxd





A1	A2	A3
B1	B2	B3
<b>C1</b>	C2	C3
D1	D2	D3

- Simulation Viewpoint (VP)
- ▲ Line of Sight Location (L)
- Project Fence Line
- Predicted Visibility
- ▭ Municipal Boundary
- National Register of Historic Places Site
- ▭ Larger Historic District
- Historic\_Eligible
- Revolutionary Trail Scenic Byway
- Erie Canal Trailway
- State Bikeway Route 5
- Mohawk Hudson BikeHike Trail
- Strawberry Fields Trails
- Preserve
- Boat Launch
- Chuctanunga Creek Trail
- Local Park
- Federal-State-County Recreation
- Snowmobile Trail
- Erie Canalway Heritage Corridor
- High Point Location
- CONSERVATION EASEMENT
- Federal
- Mohawk Hudson Land Conservancy
- COMMUNITY CONCERN
- ★ Local Cemeteries
- ★ Mariaville Bed & Breakfast
- DISTANCE ZONES
- Half Mile Radius
- Two Mile Radius
- Five Mile Radius

The Erie Canalway Heritage Corridor consists of all of the land area for the Town of Amsterdam, City of Amsterdam, Florida, Glenville, and Rotterdam

Map Page C1

0 2,000 Feet

1:24,000

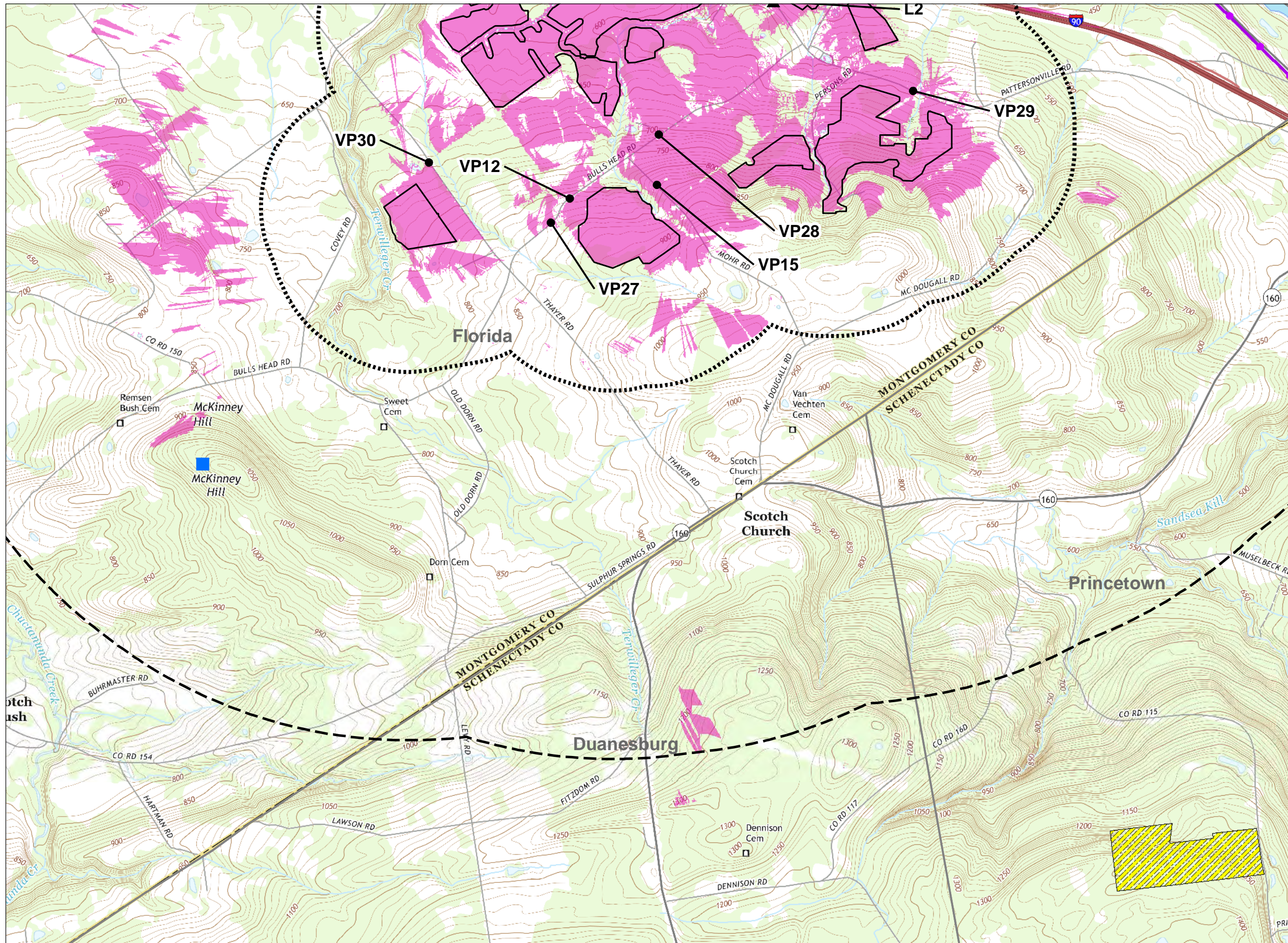
Base Map: USGS 2016 GeoPDF acquired at <https://viewer.nationalmap.gov/>



**VIEWSHED ANALYSIS**  
**HIGH RIVER ENERGY CENTER**  
**TOWN OF FLORIDA, NY**

C:\Users\jbartos\WorkDocs\276520\_NextEra\_Solar\_HighRiver\VISUAL\mxd\VIEWHR\_Fig 4 Viewshed Map\_2019-09-24.mxd





A1	A2	A3
B1	B2	B3
C1	C2	C3
D1	D2	D3

- Simulation Viewpoint (VP)
- ▲ Line of Sight Location (L)
- Project Fence Line
- Predicted Visibility
- Municipal Boundary
- National Register of Historic Places Site
- Larger Historic District
- Historic\_Eligible
- Revolutionary Trail Scenic Byway
- Erie Canal Trailway
- State Bikeway Route 5
- Mohawk Hudson BikeHike Trail
- Strawberry Fields Trails
- Preserve
- Boat Launch
- Chuctanunga Creek Trail
- Local Park
- Federal-State-County Recreation
- Snowmobile Trail
- Erie Canalway Heritage Corridor
- High Point Location
- CONSERVATION EASEMENT
- Federal
- Mohawk Hudson Land Conservancy
- COMMUNITY CONCERN
- ★ Local Cemeteries
- ★ Mariaville Bed & Breakfast
- DISTANCE ZONES
- Half Mile Radius
- Two Mile Radius
- Five Mile Radius

The Erie Canalway Heritage Corridor consists of all of the land area for the Town of Amsterdam, City of Amsterdam, Florida, Glenville, and Rotterdam

Map Page C2

0 2,000 Feet

1:24,000

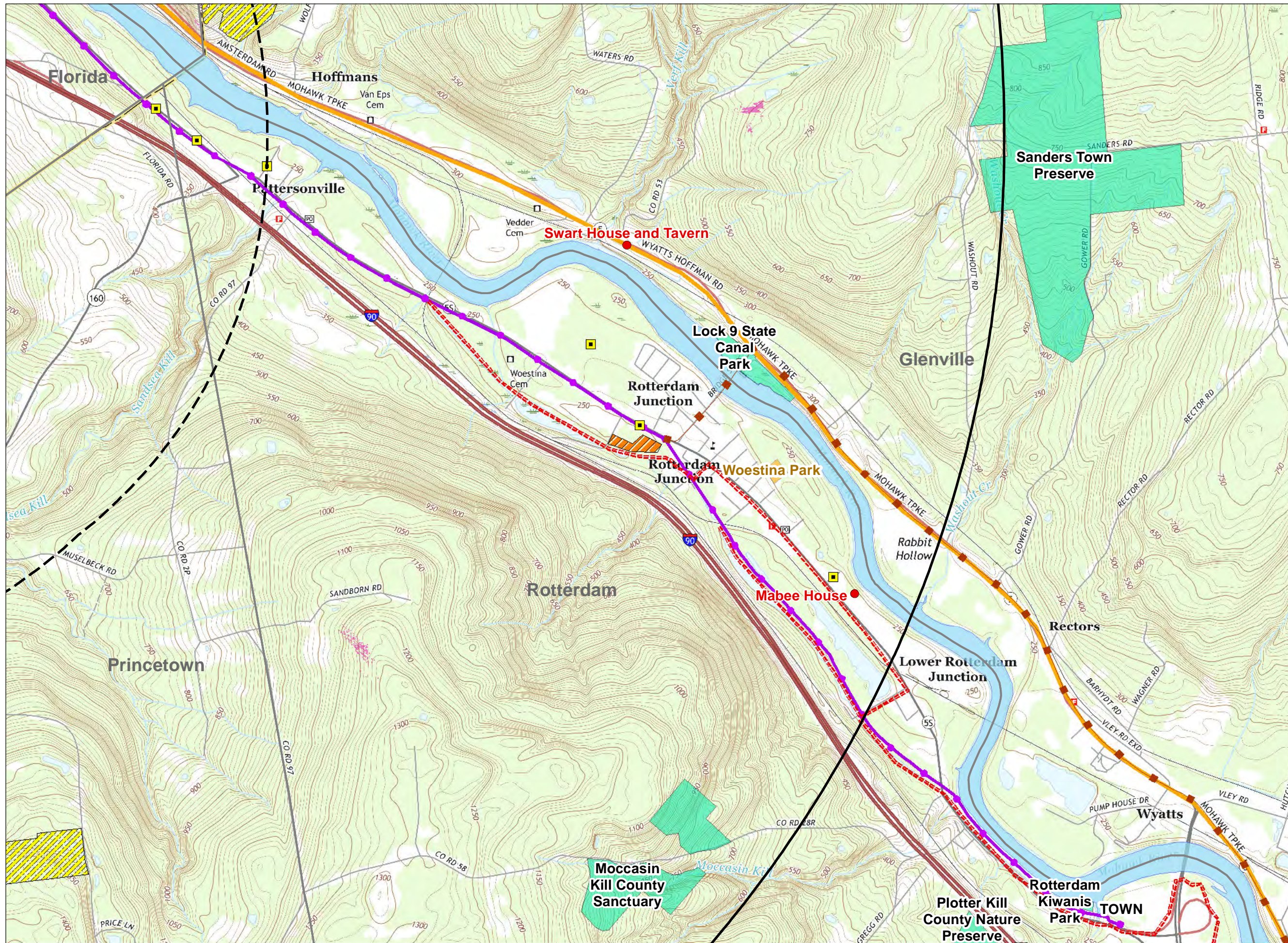
Base Map: USGS 2016 GeoPDF acquired at <https://viewer.nationalmap.gov/>



**VIEWSHED ANALYSIS**  
**HIGH RIVER ENERGY CENTER**  
**TOWN OF FLORIDA, NY**

C:\Users\bartos\WorkDocs\276520\_NextEra\_Solar\_HighRiver\VISUAL\mxd\VIEWHR\_Fig 4 Viewshed Map\_2019-09-24.mxd

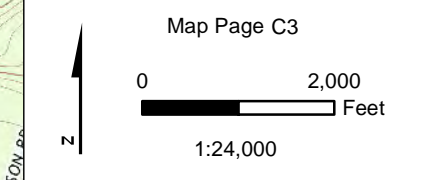




A1	A2	A3
B1	B2	B3
C1	C2	<b>C3</b>
D1	D2	D3

- Simulation Viewpoint (VP)
- ▲ Line of Sight Location (L)
- Project Fence Line
- ▭ Predicted Visibility
- ▭ Municipal Boundary
- National Register of Historic Places Site
- ▭ Larger Historic District
- ▭ Historic\_Eligible
- Revolutionary Trail Scenic Byway
- Erie Canal Trailway
- State Bikeway Route 5
- Mohawk Hudson BikeHike Trail
- Strawberry Fields Trails
- ▭ Preserve
- ▭ Boat Launch
- Chuctanunga Creek Trail
- ▭ Local Park
- ▭ Federal-State-County Recreation
- Snowmobile Trail
- ▭ Erie Canalway Heritage Corridor
- ▭ High Point Location
- CONSERVATION EASEMENT
- ▭ Federal
- ▭ Mohawk Hudson Land Conservancy
- COMMUNITY CONCERN
- ★ Local Cemeteries
- ★ Mariaville Bed & Breakfast
- DISTANCE ZONES
- ▭ Half Mile Radius
- ▭ Two Mile Radius
- ▭ Five Mile Radius

The Erie Canalway Heritage Corridor consists of all of the land area for the Town of Amsterdam, City of Amsterdam, Florida, Glennville, and Rotterdam



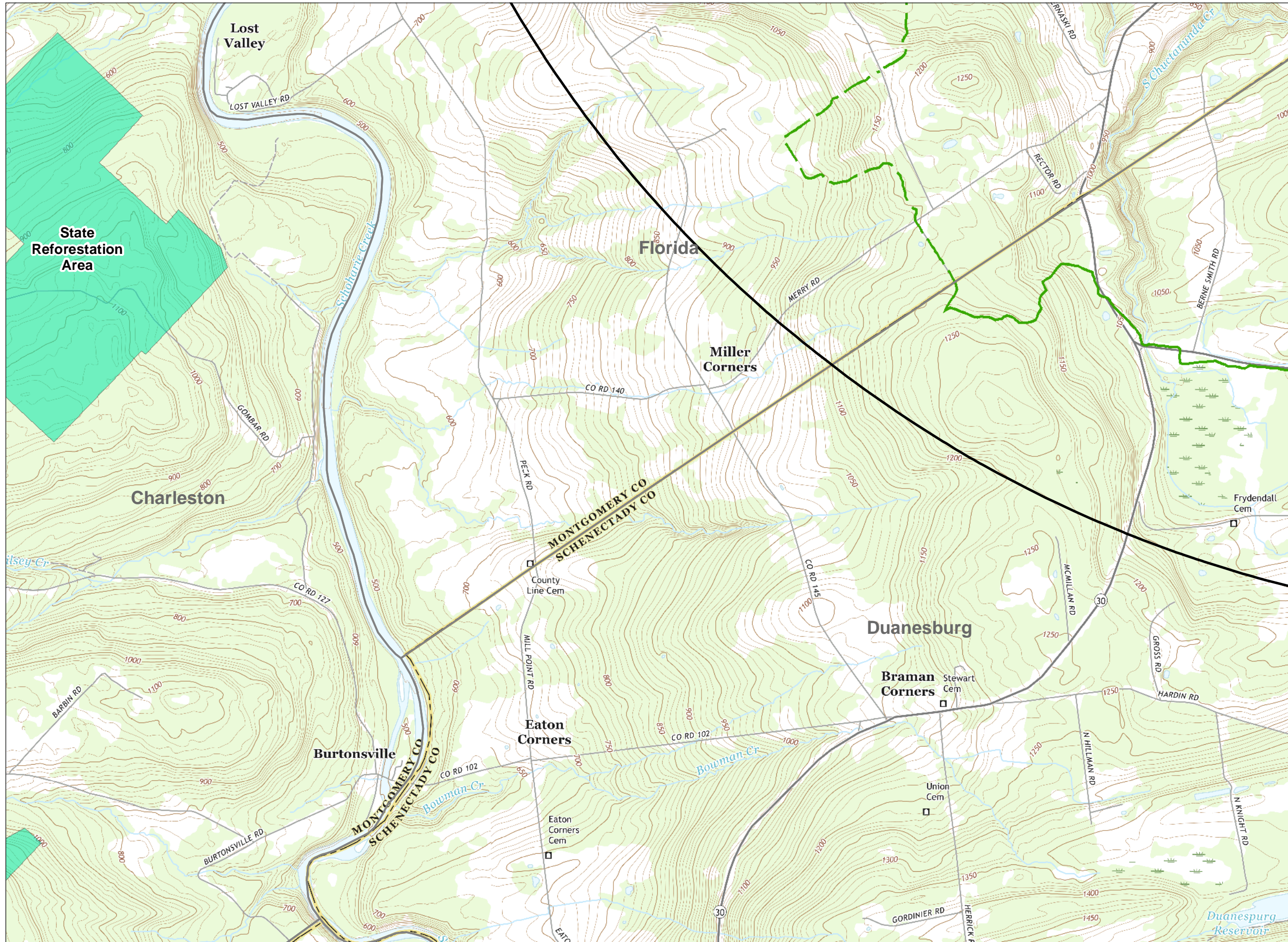
Base Map: USGS 2016 GeoPDF acquired at <https://viewer.nationalmap.gov/>



**VIEWSHED ANALYSIS**  
**HIGH RIVER**  
**ENERGY CENTER**  
**TOWN OF FLORIDA, NY**

C:\Users\jbartos\Work\Docs\276520\_NextEra\_Solar\_HighRiver\VISUAL\mxd\VIEWHR\_Fig 4 Viewshed Map\_2019-09-24.mxd





A1	A2	A3
B1	B2	B3
C1	C2	C3
<b>D1</b>	D2	D3

- Simulation Viewpoint (VP)
- ▲ Line of Sight Location (L)
- Project Fence Line
- ▭ Predicted Visibility
- ▭ Municipal Boundary
- National Register of Historic Places Site
- ▭ Larger Historic District
- ▭ Historic\_Eligible
- ▭ Revolutionary Trail Scenic Byway
- ▭ Erie Canal Trailway
- ▭ State Bikeway Route 5
- ▭ Mohawk Hudson BikeHike Trail
- ▭ Strawberry Fields Trails
- ▭ Preserve
- ▭ Boat Launch
- ▭ Chuctanunga Creek Trail
- ▭ Local Park
- ▭ Federal-State-County Recreation
- ▭ Snowmobile Trail
- ▭ Erie Canalway Heritage Corridor
- ▭ High Point Location
- CONSERVATION EASEMENT
- ▭ Federal
- ▭ Mohawk Hudson Land Conservancy
- COMMUNITY CONCERN
- ★ Local Cemeteries
- ★ Mariaville Bed & Breakfast
- DISTANCE ZONES
- ▭ Half Mile Radius
- ▭ Two Mile Radius
- ▭ Five Mile Radius

The Erie Canalway Heritage Corridor consists of all of the land area for the Town of Amsterdam, City of Amsterdam, Florida, Glennville, and Rotterdam

Map Page D1

0 2,000 Feet

1:24,000

Base Map: USGS 2016 GeoPDF acquired at <https://viewer.nationalmap.gov/>

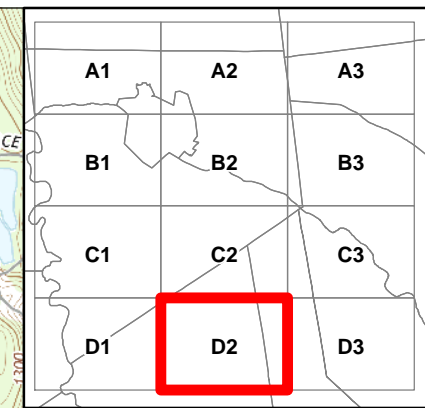
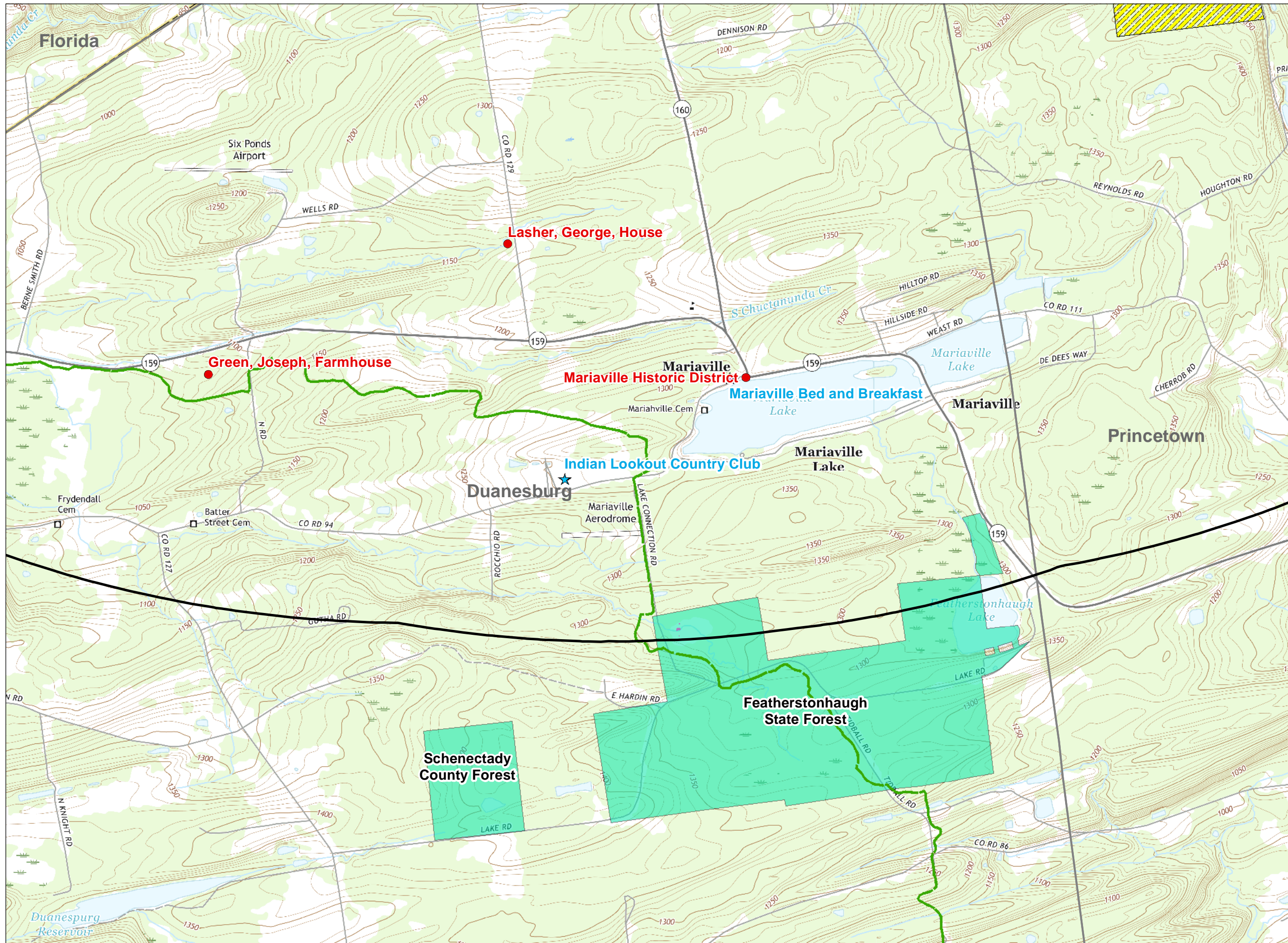
**NEXTERA ENERGY**

**VIEWSHED ANALYSIS**  
**HIGH RIVER ENERGY CENTER**  
**TOWN OF FLORIDA, NY**

FIGURE 4 SEPTEMBER 2019

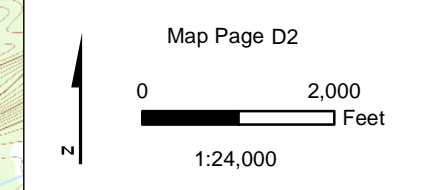
Map Produced by **TRC**





- Simulation Viewpoint (VP)
- ▲ Line of Sight Location (L)
- Project Fence Line
- ▭ Predicted Visibility
- ▭ Municipal Boundary
- National Register of Historic Places Site
- ▭ Larger Historic District
- ▭ Historic\_Eligible
- ▭ Revolutionary Trail Scenic Byway
- ▭ Erie Canal Trailway
- ▭ State Bikeway Route 5
- ▭ Mohawk Hudson BikeHike Trail
- ▭ Strawberry Fields Trails
- ▭ Preserve
- ▭ Boat Launch
- ▭ Chuctanunga Creek Trail
- ▭ Local Park
- ▭ Federal-State-County Recreation
- ▭ Snowmobile Trail
- ▭ Erie Canalway Heritage Corridor
- ▭ High Point Location
- CONSERVATION EASEMENT
- ▭ Federal
- ▭ Mohawk Hudson Land Conservancy
- COMMUNITY CONCERN
- ★ Local Cemeteries
- ★ Mariaville Bed & Breakfast
- DISTANCE ZONES
- ▭ Half Mile Radius
- ▭ Two Mile Radius
- ▭ Five Mile Radius

The Erie Canalway Heritage Corridor consists of all of the land area for the Town of Amsterdam, City of Amsterdam, Florida, Glennville, and Rotterdam



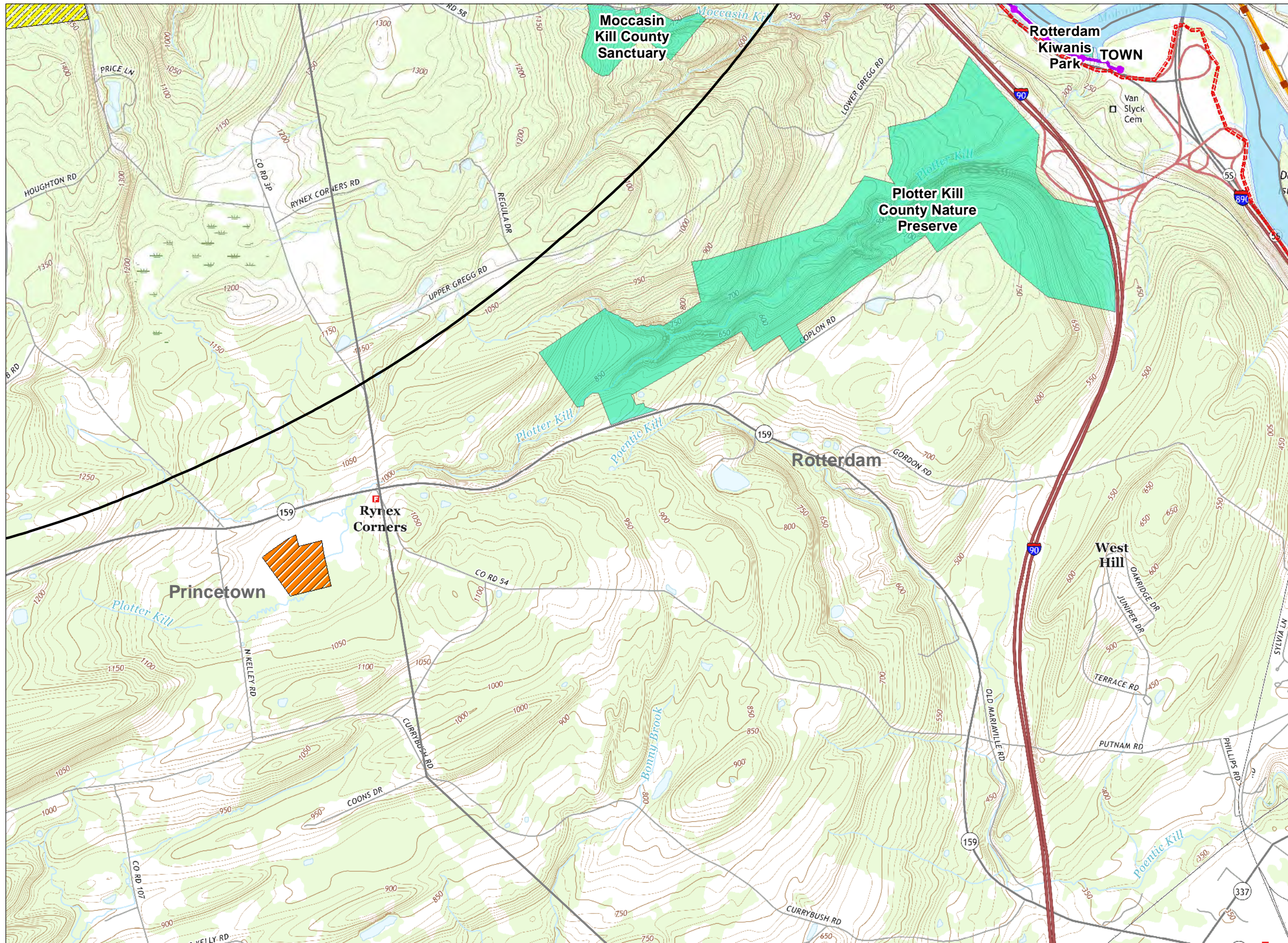
Base Map: USGS 2016 GeoPDF acquired at <https://viewer.nationalmap.gov/>



**VIEWSHED ANALYSIS**  
**HIGH RIVER**  
**ENERGY CENTER**  
**TOWN OF FLORIDA, NY**

C:\Users\jbartos\WorkDocs\276520\_NextEra\_Solar\_HighRiver\VISUAL\mxd\VIEWHR\_Fig 4 Viewshed Map\_2019-09-24.mxd

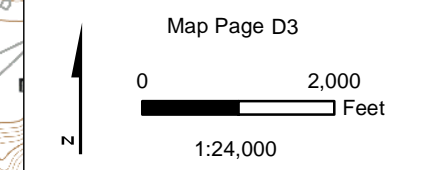




A1	A2	A3
B1	B2	B3
C1	C2	C3
D1	D2	D3

- Simulation Viewpoint (VP)
- ▲ Line of Sight Location (L)
- Project Fence Line
- ▭ Predicted Visibility
- ▭ Municipal Boundary
- National Register of Historic Places Site
- ▭ Larger Historic District
- ▭ Historic\_Eligible
- ▭ Revolutionary Trail Scenic Byway
- ▭ Erie Canal Trailway
- ▭ State Bikeway Route 5
- ▭ Mohawk Hudson BikeHike Trail
- ▭ Strawberry Fields Trails
- ▭ Preserve
- ▭ Boat Launch
- ▭ Chuctanunga Creek Trail
- ▭ Local Park
- ▭ Federal-State-County Recreation
- ▭ Snowmobile Trail
- ▭ Erie Canalway Heritage Corridor
- ▭ High Point Location
- CONSERVATION EASEMENT
- ▭ Federal
- ▭ Mohawk Hudson Land Conservancy
- COMMUNITY CONCERN
- ★ Local Cemeteries
- ★ Mariaville Bed & Breakfast
- DISTANCE ZONES
- ▭ Half Mile Radius
- ▭ Two Mile Radius
- ▭ Five Mile Radius

The Erie Canalway Heritage Corridor consists of all of the land area for the Town of Amsterdam, City of Amsterdam, Florida, Glenville, and Rotterdam



Base Map: USGS 2016 GeoPDF acquired at <https://viewer.nationalmap.gov/>



**VIEWSHED ANALYSIS**  
**HIGH RIVER**  
**ENERGY CENTER**  
**TOWN OF FLORIDA, NY**

C:\Users\jbartos\Work\Docs\276520\_NextEra\_Solar\_HighRiver\VISUAL\mxd\VIEWHR\_Fig 4 Viewshed Map\_2019-09-24.mxd

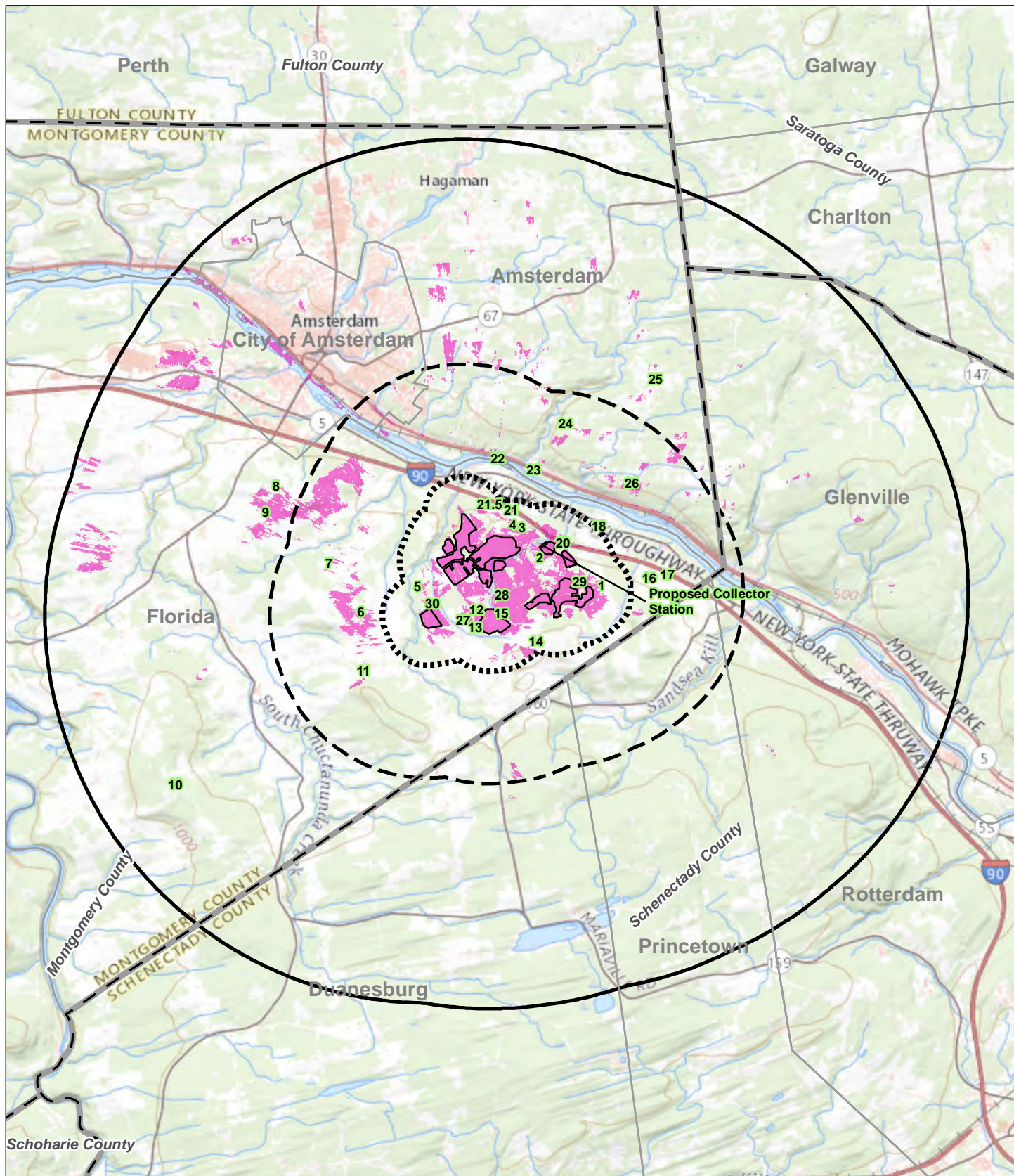


**HIGH RIVER ENERGY PROJECT  
ARTICLE 10 EXHIBIT 24**

**PHOTOLOG**

**ATTACHMENT 3**





- VP1** Photolog Viewpoint
- Project Fence Line
- █ Predicted Visibility
- ▬ County Boundary
- ▭ Municipal Boundary



**PHOTOLOG VIEWPOINTS  
HIGH RIVER  
ENERGY CENTER  
TOWN OF FLORIDA, NY**

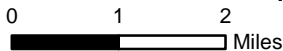


FIGURE A3-1

SEPTEMBER 2019

Map Produced by TRC





**Viewpoint 1**

4235, 4236, 4237

**Location**  
Pattersonville Rd.

Town: Florida

Photo Date: 4-23-2018  
Orientation: W



**Viewpoint 2**

4240, 4242, 4243, 4244

**Location**  
Pattersonville Rd.

Town: Florida

Photo Date: 4-23-2018  
Orientation: N to E



**Viewpoint 3**

4245, 4246, 4247

**Location**  
Pattersonville Rd.

Town: Florida

Photo Date: 4-23-2018  
Orientation: S to W





**Viewpoint 4**

4248, 4249

**Location**

Pattersonville Rd

Town: Florida

Photo Date: 4-23-2018

Orientation: NE to E



**Viewpoint 5**

4250, 4251, 4252,

**Location**

Thayer Rd

Town: Florida

Photo Date: 4-23-2018

Orientation: E



**Viewpoint 7**

4254, 4255

**Location**

Belldons Rd

Town: Florida

Photo Date: 4-23-2018

Orientation: E





**Viewpoint 10**

**Location**  
Shellstone Rd.

Town: Florida

Photo Date: 4-23-2018

Orientation: NE

4258, 4259



**Viewpoint 11**

**Location**  
Bulls Head Rd

Town: Florida

Photo Date: 4-23-2018

Orientation: E

4260, 4261



**Viewpoint 12**

**Location**  
Bulls Head Rd

Town: Florida

Photo Date: 4-23-2018

Orientation: E

4262, 4263, 4264





**Viewpoint 13**

4265, 4266

**Location**

Bulls Head Rd.

Town: Florida

Photo Date: 4-23-2018

Orientation: NE



**Viewpoint 15a**

4271, 4272, 4274, 4275

**Location**

Mohr Rd

Town: Florida

Photo Date: 4-24-2018

Orientation: E to NE



**Viewpoint 15b**

4276, 4277

**Location**

Mohr Rd

Town: Florida

Photo Date: 4-24-201

Orientation: N to NE





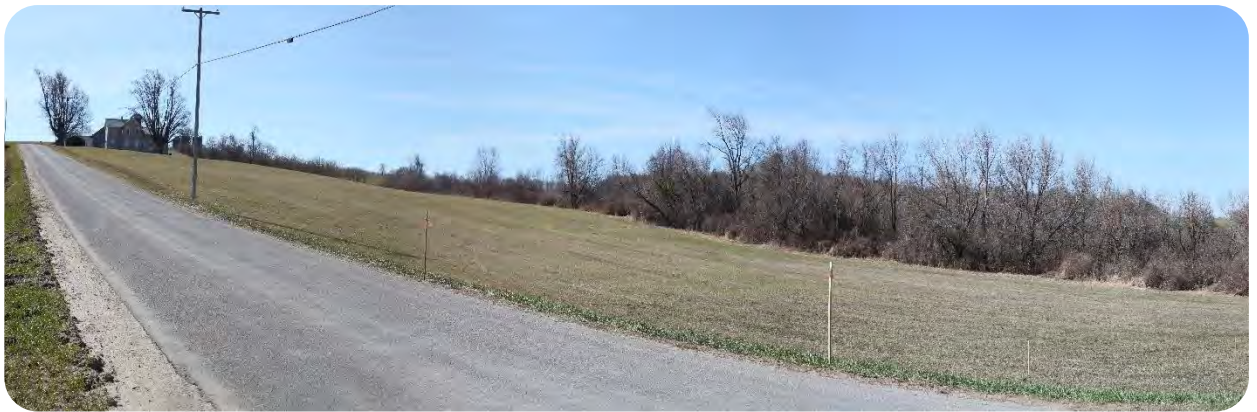
**Viewpoint 15c**

4278, 4279

**Location**  
Mohr Rd

**Town:** Florida

**Photo Date:** 4-24-201  
**Orientation:** SW to W



**Viewpoint 15d**

4280, 4281, 4282

**Location**  
Mohr Rd

**Town:** Florida

**Photo Date:** 4-24-201  
**Orientation:** S to W



**Viewpoint 16**

4285, 4286

**Location**  
Pattersonville Rd

**Town:** Florida

**Photo Date:** 4-24-201  
**Orientation:** W to NW





**Viewpoint 21**

4293, 4295, 4296, 4297

**Location**  
NY Thruway

Town: Florida

Photo Date: 4-24-201  
Orientation: S to W



**Viewpoint 21.5**

4298, 4299, 4300, 4301

**Location**  
NY Thruway

Town: Florida

Photo Date: 4-24-201  
Orientation: SE to S



**Viewpoint 22**

4302, 4303, 4304

**Location**  
State Highway 5

Town: Amsterdam

Photo Date: 4-24-201  
Orientation: S





**Viewpoint 23**

4305, 4306, 4307

**Location**  
Riverview Drive

Town: Amsterdam

Photo Date: 4-24-201  
Orientation: SW



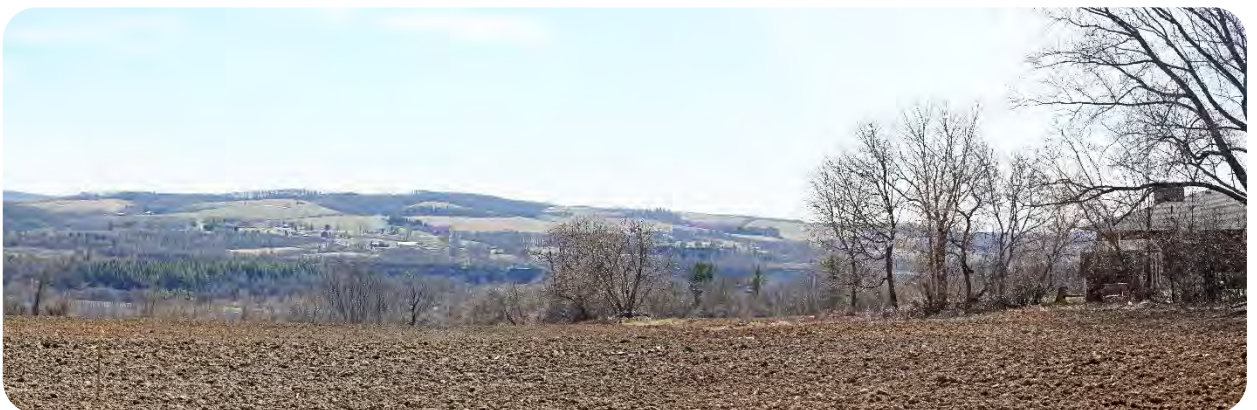
**Viewpoint 24**

4309, 4310, 4311

**Location**  
Strawberry Fields Nature Preserve.

Town: Amsterdam

Photo Date: 4-24-201  
Orientation: S



**Viewpoint 26**

4313, 4315

**Location**  
Swart Hill Rd

Town: Amsterdam

Photo Date: 4-24-2018  
Orientation: SW





**Viewpoint 27**

**Location**  
Bulls Head Road

Town: Florida

Photo Date: 1-8-2019

Orientation: N

0430



**Viewpoint 28**

**Location**  
Bulls Head Road

Town: Florida

Photo Date: 1-8-2019

Orientation: N

0461



**Viewpoint 29**

**Location**  
Pattersonville Road

Town: Florida

Photo Date: 1-8-2019

Orientation: S

0476





**Viewpoint 30**

**Location**  
Thayer Road

Town: Florida

Photo Date: 6-14-2019

Orientation: SE

1441

See Next Page

**Viewpoint**

**Location**

Town:

Photo Date:

Orientation:

**Viewpoint**

**Location**

Town:

Photo Date:

Orientation:





### Viewpoint 6

**Location**  
Langley Rd

Town: Florida

Photo Date: 4-23-2018

4253



### Viewpoint 8

**Location**  
Belldons Rd

Town: Florida

Photo Date: 4-23-2018

4256





### Viewpoint 9

**Location**  
Fuller Rd

Town: Florida

Photo Date: 4-23-2018

4257



### Viewpoint 14

**Location**  
Mohr Rd

Town: Florida

Photo Date: 4-24-2018

4268





### Viewpoint 17

**Location**

NY Thruway Pattersonville  
Service Area

Town: Florida

Photo Date:

4287



### Viewpoint 20

**Location**

View towards Project from NY  
Thruway.

Town: Florida

Photo Date: 4-24-2018

4292





## Viewpoint 25

### Location

Robb Rd

Town: Amsterdam

County: Montgomery

Photo Date: 4-24-2018

IMG\_4312

## Viewpoint

### Location

Town:

County:

Photo Date: