

PRELIMINARY
NOT FOR CONSTRUCTION



327851-HIGH RIVER-L-001.dwg 2019.08.28

UNDER NEW YORK STATE EDUCATION LAW ARTICLE 145 (ENGINEERING), SECTION 7209 (2), IT IS A VIOLATION OF THE LAW FOR ANY PERSON, UNLESS ACTING UNDER THE DIRECTION OF A LICENSED PROFESSIONAL ENGINEER, TO ALTER THIS DOCUMENT.

TRC 249 Western Avenue
Agusta, ME 04330

PROJECT NO: 327851

REV	DESCRIPTION	DATE	DES	CHK	APP
E	ISSUED FOR CLIENT REVIEW	08-21-19	CMW	PGT	
D	ISSUED FOR CLIENT REVIEW	08-09-19	SEK	PGT	
C	ISSUED FOR CLIENT REVIEW	07-19-19	SEK	PGT	
B	ISSUED FOR CLIENT REVIEW	06-20-19	CMW	PGT	

PDT
DESIGNED
CMW
DRAWN
CHECKED
APPROVED

PRELIMINARY
OVERALL LANDSCAPE SCREENING PLAN & KEY SHEET
HIGH RIVER ENERGY CENTER
HIGH RIVER ENERGY CENTER, LLC
MONTGOMERY CO., NY
FLORIDA

REVIEW 1
DATE
AS NOTED
SCALE



L-001

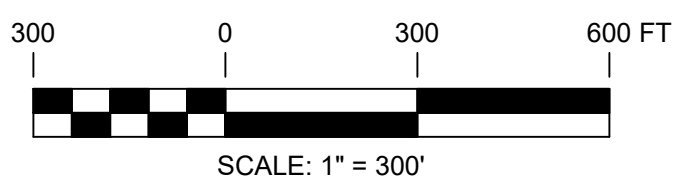
REV. E



VEGETATIVE BUFR / SCREEN MITIGATION TABLE						
Point #	MITIGATION SECTION	MITIGATION TYPE	MITIGATION LENGTH	LATITUDE	LONGITUDE	COMMENTS
1	VM-1	TYPE 2	1360'	N 42.908257	W 74.151923	WIDTH MAY BE RESTRICTED DUE TO EXISTING VEGETATION
2	VM-1			N 42.905260	W 74.148900	
3	VM-2			N 42.904071	W 74.144390	
4	VM-2	TYPE 2	1352'	N 42.904069	W 74.143786	
5	VM-2			N 42.903905	W 74.142857	
6	VM-2			N 42.903742	W 74.141927	
7	VM-2			N 42.903738	W 74.140662	
8	VM-2			N 42.903734	W 74.139396	
9	VM-3	TYPE 2	516'	N 42.899229	W 74.142194	
10	VM-3			N 42.899129	W 74.141870	
11	VM-3			N 42.898597	W 74.141356	
12	VM-3	TYPE 1	715'	N 42.898091	W 74.141359	
13	VM-4			N 42.897508	W 74.141992	
14	VM-4	TYPE 2	1590'	N 42.897200	W 74.143695	
15	VM-4			N 42.897163	W 74.144609	
16	VM-5	TYPE 2	738'	N 42.897223	W 74.145120	
17	VM-5			N 42.896442	W 74.145124	
18	VM-5			N 42.896007	W 74.144872	
19	VM-5			N 42.895303	W 74.144875	
20	VM-5			N 42.894070	W 74.145535	
21	VM-5	TYPE 2	2980'	N 42.894072	W 74.146223	WIDTH MAY BE RESTRICTED DUE TO EXISTING VEGETATION
22	VM-5			N 42.894634	W 74.146223	
23	VM-6	TYPE 2	680'	N 42.894509	W 74.146841	WIDTH MAY BE RESTRICTED DUE TO EXISTING VEGETATION
24	VM-6			N 42.896155	W 74.148443	
25	VM-7	TYPE 2	600'	N 42.897057	W 74.149656	
26	VM-7			N 42.894605	W 74.154276	
27	VM-7			N 42.894607	W 74.154943	
28	VM-7	TYPE 2	600'	N 42.897436	W 74.157738	
32	VM-8			N 42.898086	W 74.158380	
33	VM-8	TYPE 2	600'	N 42.899044	W 74.159327	WIDTH MAY BE RESTRICTED DUE TO EXISTING VEGETATION
34	VM-8			N 42.899725	W 74.159323	
40	VM-9	TYPE 2	600'	N 42.900592	W 74.156885	
41	VM-9			N 42.901580	W 74.157880	
42	VM-9			N 42.901997	W 74.157877	

327851-HIGH RIVER-L-001.dwg 2019.08.28

UNDER NEW YORK STATE EDUCATION LAW ARTICLE 145 (ENGINEERING), SECTION 7209 (2), IT IS A VIOLATION OF THE LAW FOR ANY PERSON, UNLESS ACTING UNDER THE DIRECTION OF A LICENSED PROFESSIONAL ENGINEER, TO ALTER THIS DOCUMENT.



PRELIMINARY
NOT FOR CONSTRUCTION

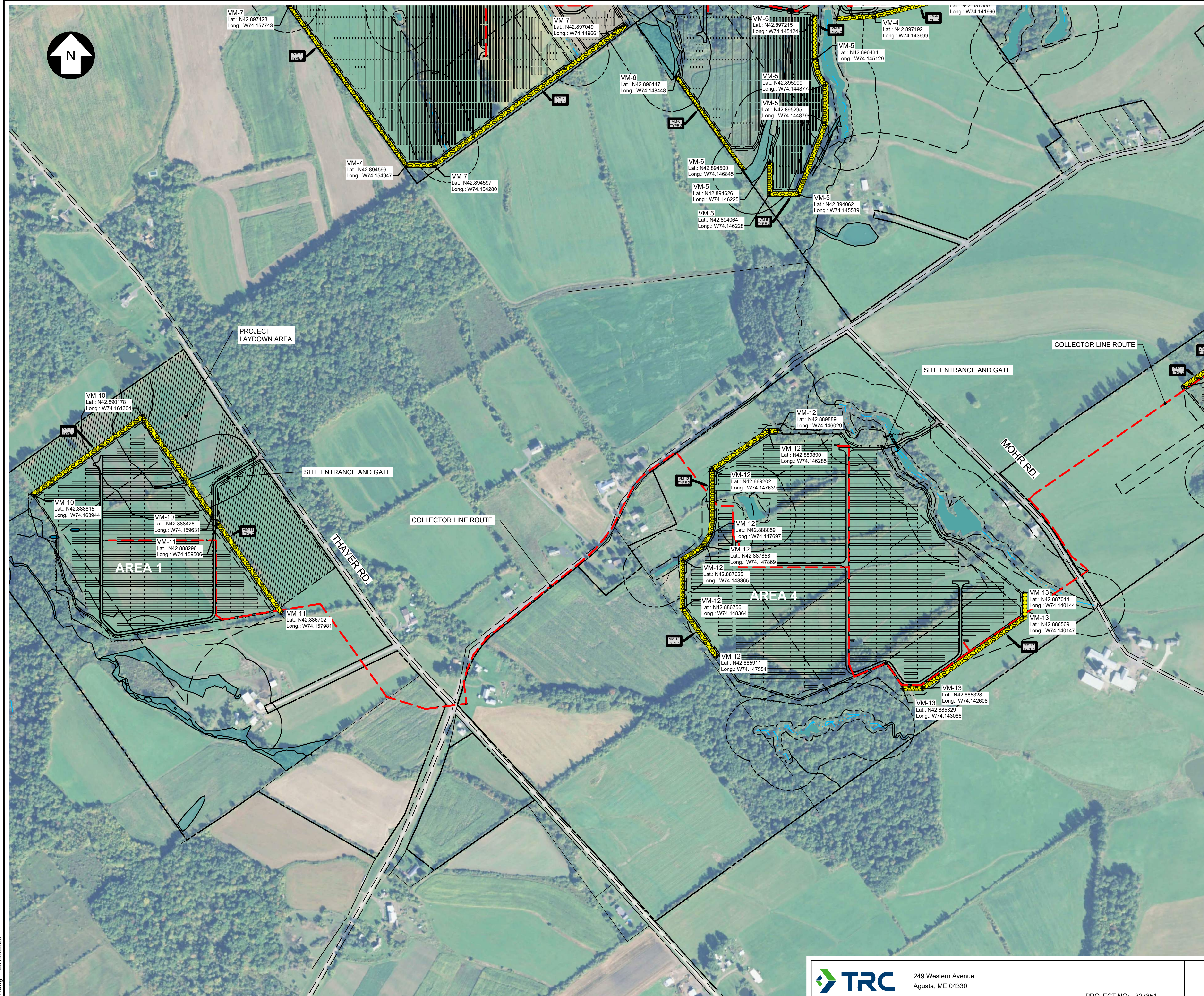


TRC 249 Western Avenue
Agusta, ME 04330

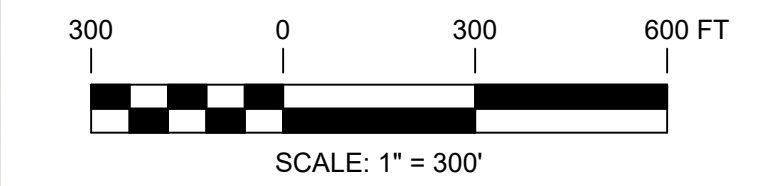
PROJECT NO: 327851

REFERENCE ITEMS	REV	DESCRIPTION	DATE	DES	CHK	APP
	E	ISSUED FOR CLIENT REVIEW	08-21-19	CMW	PGT	
	D	ISSUED FOR CLIENT REVIEW	08-09-19	SEK	PGT	
	C	ISSUED FOR CLIENT REVIEW	07-19-19	SEK	PGT	
	B	ISSUED FOR CLIENT REVIEW	06-20-19	CMW	PGT	

PDT DESIGNED CMW DRAWN CHECKED APPROVED	PRELIMINARY LANDSCAPE SCREENING PLAN - SCREENING SCENARIOS HIGH RIVER ENERGY CENTER HIGH RIVER ENERGY CENTER, LLC FLORIDA MONTGOMERY CO., NY			L-002	REV. E
	REVIEW 1 REVIEW 2	04/08 DATE AS NOTED SCALE			



VEGETATIVE BUFER / SCREEN MITIGATION TABLE						
Point #	MITIGATION SECTION	MITIGATION TYPE	MITIGATION LENGTH	LATITUDE	LONGITUDE	COMMENTS
44	VM-10	TYPE 2	1645'	N 42.888823	W 74.163940	
45	VM-10			N 42.890186	W 74.161299	
46	VM-10			N 42.888434	W 74.159626	
48	VM-11	TYPE 2	710'	N 42.888304	W 74.159501	
49	VM-11			N 42.886710	W 74.157976	
51	VM-12	TYPE 2	1865'	N 42.885919	W 74.147550	
52	VM-12			N 42.886764	W 74.148360	
53	VM-12			N 42.887633	W 74.148360	
54	VM-12			N 42.887866	W 74.147864	
55	VM-12			N 42.888067	W 74.147693	
56	VM-12			N 42.889210	W 74.147634	
57	VM-12			N 42.889898	W 74.146280	
58	VM-12	N 42.889897	W 74.146025			
59	VM-13	TYPE 2	1090'	N 42.887022	W 74.140140	
60	VM-13			N 42.886577	W 74.140143	
61	VM-13			N 42.885336	W 74.142603	
62	VM-13			N 42.885337	W 74.143081	



PRELIMINARY
NOT FOR CONSTRUCTION



327851-HIGH RIVER-L-001.dwg - 2019.08.28

UNDER NEW YORK STATE EDUCATION LAW ARTICLE 145 (ENGINEERING), SECTION 7209 (2), IT IS A VIOLATION OF THE LAW FOR ANY PERSON, UNLESS ACTING UNDER THE DIRECTION OF A LICENSED PROFESSIONAL ENGINEER, TO ALTER THIS DOCUMENT.

TRC 249 Western Avenue
Agusta, ME 04330

PROJECT NO: 327851

REV	DESCRIPTION	DATE	DES	CHK	APP
E	ISSUED FOR CLIENT REVIEW	08-21-19	CMW	PGT	
D	ISSUED FOR CLIENT REVIEW	08-09-19	SEK	PGT	
C	ISSUED FOR CLIENT REVIEW	07-19-19	SEK	PGT	
B	ISSUED FOR CLIENT REVIEW	06-20-19	CMW	PGT	

PDT DESIGNED
CMW DRAWN
CHECKED
APPROVED

PRELIMINARY
LANDSCAPE SCREENING PLAN - SCREENING SCENARIOS
HIGH RIVER ENERGY CENTER
HIGH RIVER ENERGY CENTER, LLC
FLORIDA
MONTGOMERY CO., NY

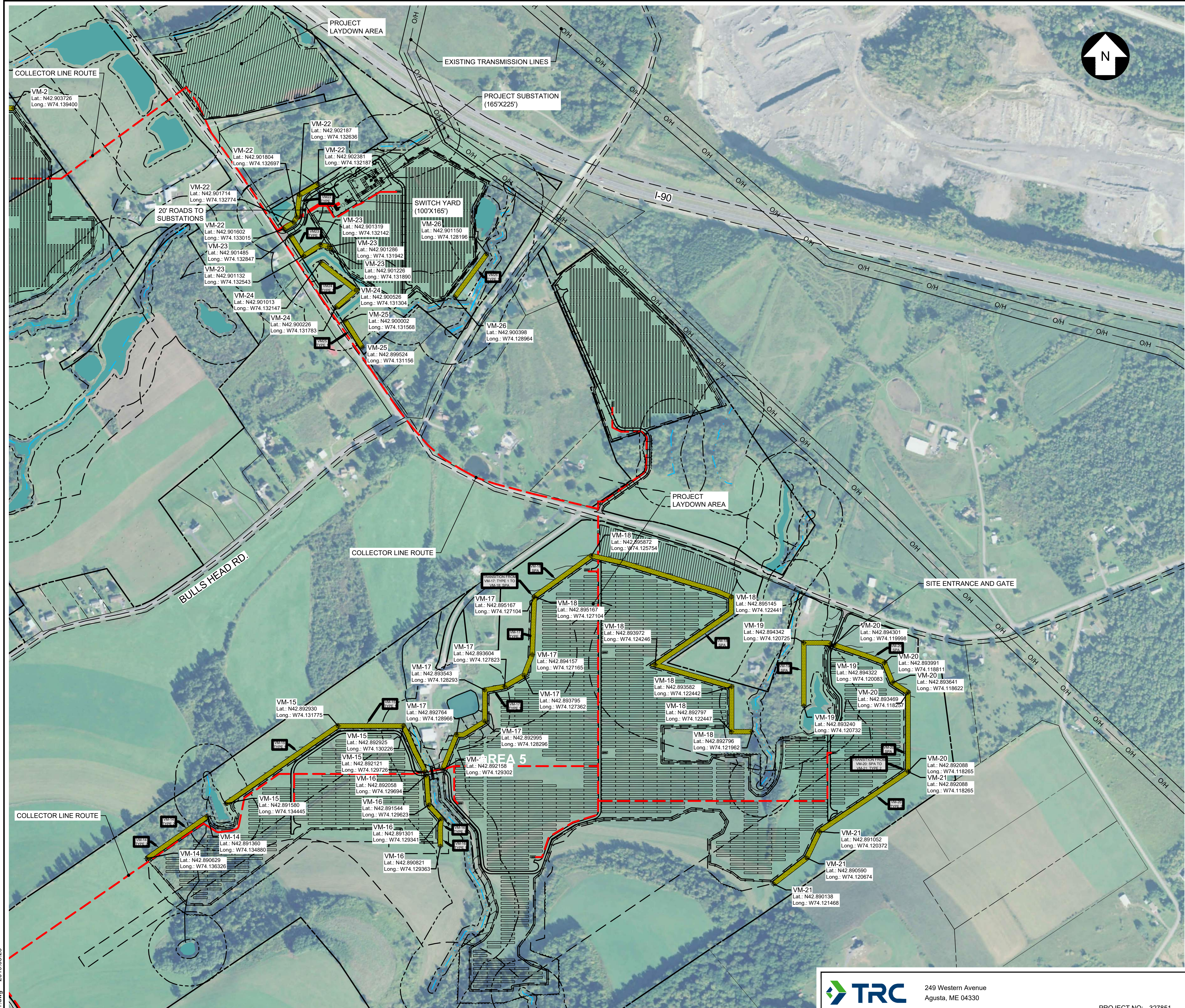
REVIEW 1
REVIEW 2

04/08
DATE
AS NOTED
SCALE

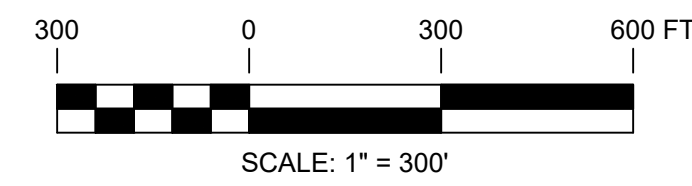
TRC

L-003

REV. E



VEGETATIVE BUFER / SCREEN MITIGATION TABLE						
Point #	MITIGATION SECTION	MITIGATION TYPE	MITIGATION LENGTH	LATITUDE	LONGITUDE	COMMENTS
63	VM-14	TYPE 2	470'	N 42.890637	W 74.136322	
64	VM-14			N 42.891369	W 74.134875	
65	VM-15	TYPE 1	1,605'	N 42.892129	W 74.129721	
66	VM-15			N 42.892933	W 74.130221	
67	VM-15			N 42.892938	W 74.131770	
68	VM-15	TYPE 1	480'	N 42.891588	W 74.134440	
69	VM-16			N 42.890829	W 74.129358	
70	VM-16	TYPE 1	480'	N 42.891309	W 74.129337	
71	VM-16			N 42.891553	W 74.129619	
72	VM-16			N 42.892066	W 74.129690	
73	VM-17	TYPE 1	1,422'	N 42.892166	W 74.129298	
74	VM-17			N 42.892772	W 74.128962	
75	VM-17			N 42.893003	W 74.128292	
76	VM-17			N 42.893551	W 74.128289	
77	VM-17			N 42.893612	W 74.127819	
78	VM-17	TYPE 1	1,422'	N 42.893804	W 74.127358	
79	VM-17			N 42.894165	W 74.127160	
80	VM-17	SPA	2,975'	N 42.895176	W 74.127100	
81	VM-18			N 42.895176	W 74.127100	
82	VM-18			N 42.895880	W 74.125750	
83	VM-18	SPA	2,975'	N 42.895154	W 74.122436	
84	VM-18			N 42.893980	W 74.124242	
85	VM-18			N 42.893591	W 74.122438	
86	VM-18			N 42.892805	W 74.122443	
87	VM-18	TYPE 1	575'	N 42.892804	W 74.121958	
88	VM-18			N 42.893248	W 74.121958	
89	VM-19	SPA	575'	N 42.893248	W 74.120727	
90	VM-19			N 42.894350	W 74.120720	
91	VM-19	SPA	1,094'	N 42.894330	W 74.120078	
92	VM-20			N 42.894309	W 74.119993	
93	VM-20			N 42.893999	W 74.118806	
94	VM-20	SPA	1,094'	N 42.893477	W 74.118252	
95	VM-20			N 42.892096	W 74.118261	
96	VM-20	TYPE 2	1,135'	N 42.893649	W 74.118618	
97	VM-20			N 42.892096	W 74.118261	
98	VM-21	TYPE 2	1,135'	N 42.891060	W 74.120368	
99	VM-21			N 42.890598	W 74.120670	
100	VM-21	TYPE 1	395'	N 42.890147	W 74.121464	
101	VM-21			N 42.901610	W 74.133010	
102	VM-22	TYPE 1	395'	N 42.901722	W 74.132769	
103	VM-22			N 42.901812	W 74.132693	
104	VM-22			N 42.902195	W 74.132632	
105	VM-22	TYPE 1	360'	N 42.902389	W 74.132183	
106	VM-22			N 42.901493	W 74.132843	
107	VM-23	TYPE 1	360'	N 42.901140	W 74.132538	
108	VM-23			N 42.901327	W 74.132137	
109	VM-23	TYPE 1	456'	N 42.901294	W 74.131938	
110	VM-23			N 42.901234	W 74.131886	
111	VM-24	TYPE 1	205'	N 42.901021	W 74.132143	
112	VM-24			N 42.900534	W 74.131299	
113	VM-24	TYPE 1	342'	N 42.900234	W 74.131778	
114	VM-24			N 42.900010	W 74.131563	
115	VM-25	TYPE 1	342'	N 42.899532	W 74.131151	
116	VM-25			N 42.900408	W 74.128960	
117	VM-26	TYPE 1	342'	N 42.901158	W 74.128192	
118	VM-26					
119	VM-26					
120	VM-26					



PRELIMINARY
NOT FOR CONSTRUCTION

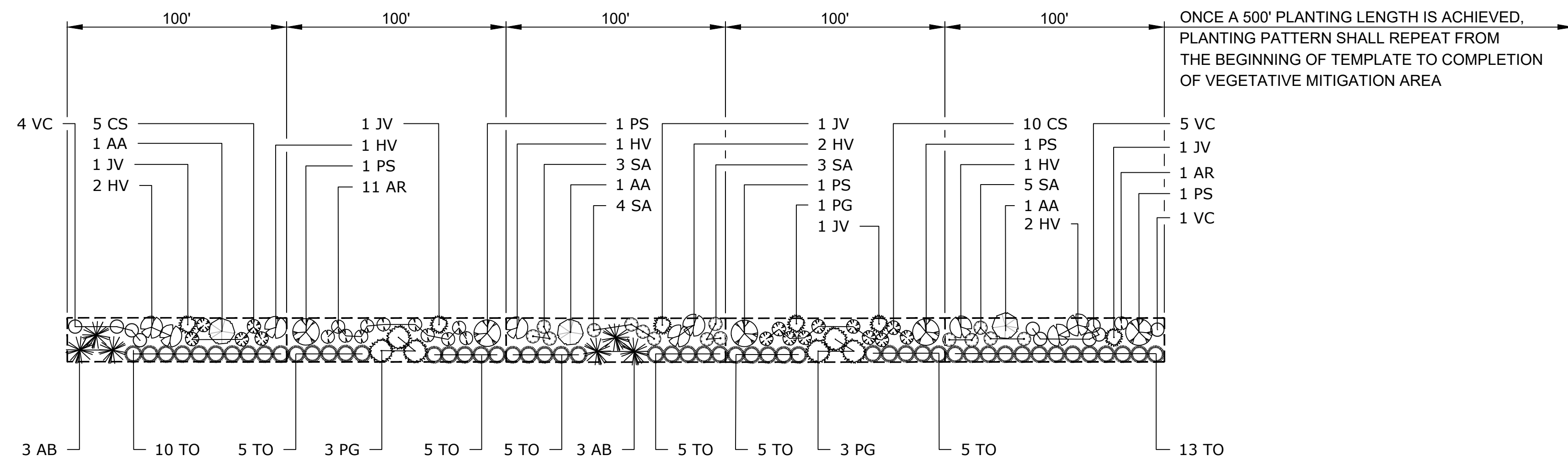


UNDER NEW YORK STATE EDUCATION LAW ARTICLE 145 (ENGINEERING), SECTION 7209 (2), IT IS A VIOLATION OF THE LAW FOR ANY PERSON, UNLESS ACTING UNDER THE DIRECTION OF A LICENSED PROFESSIONAL ENGINEER, TO ALTER THIS DOCUMENT.

327851-HIGH RIVER-L-001.dwg 2019.08.28

		249 Western Avenue Augusta, ME 04330		PROJECT NO: 327851		
REV	DESCRIPTION	DATE	DES	CHK	APP	
E	ISSUED FOR CLIENT REVIEW	08-21-19	CMW	PGT		
D	ISSUED FOR CLIENT REVIEW	08-09-19	SEK	PGT		
C	ISSUED FOR CLIENT REVIEW	07-19-19	SEK	PGT		
B	ISSUED FOR CLIENT REVIEW	06-20-19	CMW	PGT		

PLOT DESIGNED CMW DRAWN CHECKED APPROVED		PRELIMINARY LANDSCAPE SCREENING PLAN - SCREENING SCENARIOS HIGH RIVER ENERGY CENTER HIGH RIVER ENERGY CENTER, LLC MONTGOMERY CO., NY		FLORIDA
REVIEW 1 REVIEW 2	04/08 DATE AS NOTED SCALE		L-004	REV. E



LEGEND VISUAL MITIGATION PLANTING TEMPLATE TYPE 1

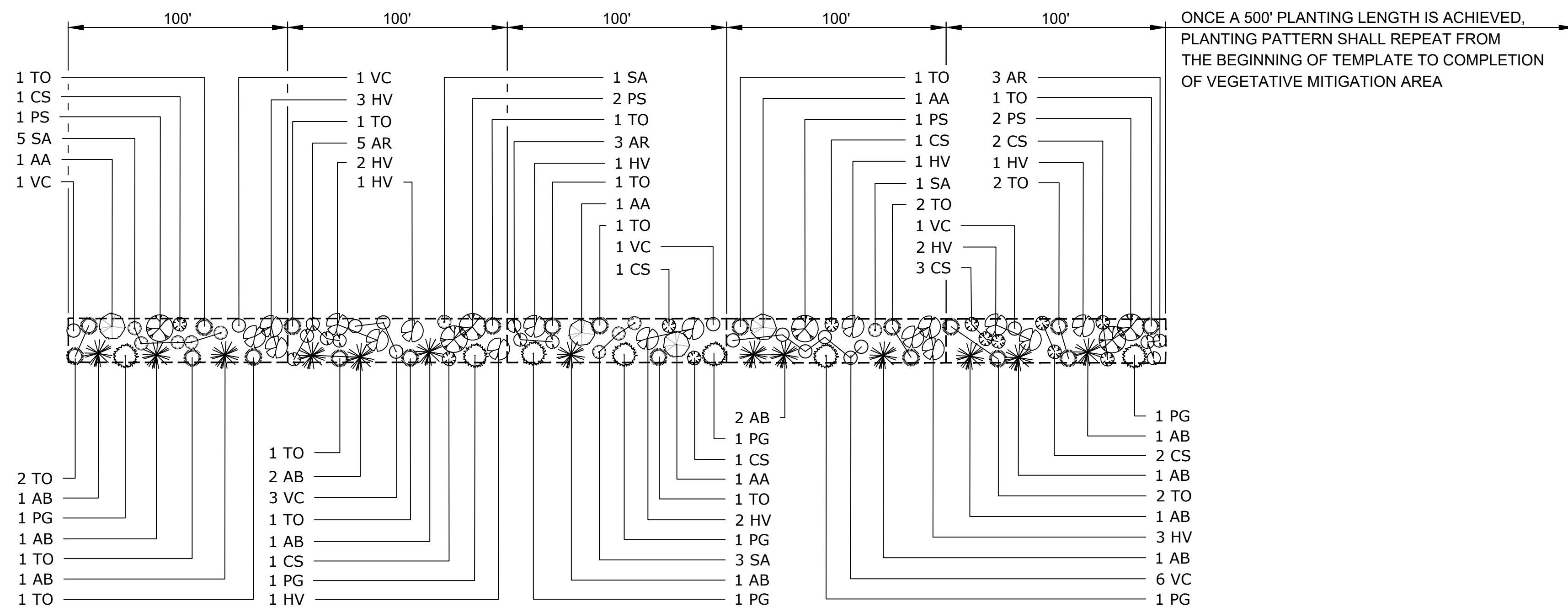
LANDSCAPE PLANTING SCHEDULE (MAXIMUM VISUAL BUFFER/SCREENING EFFORT)

DECIDUOUS AND EVERGREEN TREES

SYMBOL	BOTANICAL NAME/ COMMON PLANT NAME	QUANTITY	SIZE	ROOT	MATURE HEIGHT
AA	AMELANCHIER ARBOREA DOWNY SHADBUSH	3	5'-6" HT. CLUMP	B&B	15'-20' HT.
AB	ABIES BALSAMEA BALSAM FIR	6	5'-6" HT.	B&B	45'-65' HT.
JV	JUNIPERUS VIRGINIANA EASTERN RED CEDAR	6	5'-6" HT.	B&B	40'-50' HT.
PG	PICEA GLAUCA WHITE SPRUCE	6	5'-6" HT.	B&B	40'-60' HT.
PS	PRUNUS SEROTINO BLACK CHERRY	5	2" CAL. MIN.	B&B	50'-70' HT.
TO	THUJA OCCIDENTALIS NORTHERN WHITE CEDAR	53	5'-6" HT.	B&B	40'-60' HT.

SHRUBS

SYMBOL	BOTANICAL NAME/ COMMON PLANT NAME	QUANTITY	SIZE	ROOT	MATURE HEIGHT
AR	ARONIA ARBUTIFOLIA RED CHOKEBERRY	12	24"-30" HT.	#3/5 CONT.	7'-10' HT.
CS	CORNUS SERICEA RED TWIG DOGWOOD	15	24"-30" HT.	#3/5 CONT.	7'-9' HT.
HV	HAMAMELIS VIRGINIANA COMMON WITCH HAZEL	9	3'-4" HT.	B&B	15'-25' HT.
SA	SYMPHORICARPOS ALBUS COMMON SNOWBERRY	15	24"-30" HT.	#3/5 CONT.	3'-6" HT.
VC	VACCINIUM CORYMBOSUM HIGHBUSH BLUEBERRY	10	24"-30" HT.	#3/5 CONT.	6'-12" HT.



LEGEND VISUAL MITIGATION PLANTING TEMPLATE TYPE 2

LANDSCAPE PLANTING SCHEDULE (REDUCED VISUAL BUFFER/SCREENING EFFORT)

DECIDUOUS AND EVERGREEN TREES

SYMBOL	BOTANICAL NAME/ COMMON PLANT NAME	QUANTITY	SIZE	ROOT	MATURE HEIGHT
AA	AMELANCHIER ARBOREA DOWNY SHADBUSH	3	5'-6" HT. CLUMP	B&B	15'-20' HT.
AB	ABIES BALSAMEA BALSAM FIR	13	5'-6" HT.	B&B	45'-65' HT.
PG	PICEA GLAUCA WHITE SPRUCE	7	5'-6" HT.	B&B	40'-60' HT.
PS	PRUNUS SEROTINO BLACK CHERRY	4	2" CAL. MIN.	B&B	50'-70' HT.
TO	THUJA OCCIDENTALIS NORTHERN WHITE CEDAR	17	5'-6" HT.	B&B	40'-60' HT.

SHRUBS

SYMBOL	BOTANICAL NAME/ COMMON PLANT NAME	QUANTITY	SIZE	ROOT	MATURE HEIGHT
AR	ARONIA ARBUTIFOLIA RED CHOKEBERRY	11	24"-30" HT.	#3/5 CONT.	7'-10' HT.
CS	CORNUS SERICEA RED TWIG DOGWOOD	11	24"-30" HT.	#3/5 CONT.	7'-9' HT.
HV	HAMAMELIS VIRGINIANA COMMON WITCH HAZEL	16	3'-4" HT.	B&B	15'-25' HT.
SA	SYMPHORICARPOS ALBUS COMMON SNOWBERRY	9	24"-30" HT.	#3/5 CONT.	3'-6" HT.
VC	VACCINIUM CORYMBOSUM HIGHBUSH BLUEBERRY	12	24"-30" HT.	#3/5 CONT.	6'-12" HT.

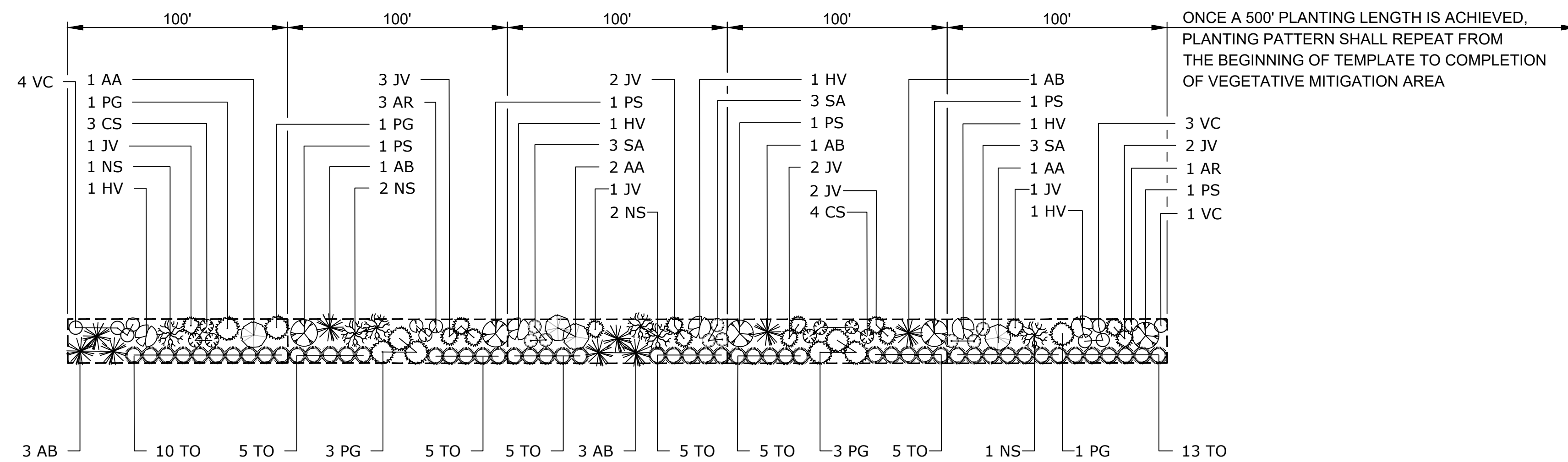
PRELIMINARY
NOT FOR CONSTRUCTION



UNDER NEW YORK STATE EDUCATION LAW ARTICLE 145 (ENGINEERING), SECTION 7209 (2), IT IS A VIOLATION OF THE LAW FOR ANY PERSON, UNLESS ACTING UNDER THE DIRECTION OF A LICENSED PROFESSIONAL ENGINEER, TO ALTER THIS DOCUMENT.

249 Western Avenue Agusta, ME 04330		PROJECT NO: 327851				PDT DESIGNED CMW DRAWN CHECKED APPROVED		PRELIMINARY LANDSCAPE SCREENING TEMPLATES & PLANTING SCHEDULES HIGH RIVER ENERGY CENTER HIGH RIVER ENERGY CENTER, LLC FLORIDA MONTGOMERY CO., NY		L-006		REV. E
REFERENCE ITEMS		REV	DESCRIPTION	DATE	DES	CHK	APP	REVIEW 1		04/08	AS NOTED	SCALE
		E	ISSUED FOR CLIENT REVIEW	08-21-19	CMW	PGT		REVIEW 2				
		D	ISSUED FOR CLIENT REVIEW	08-09-19	SEK	PGT						
		C	ISSUED FOR CLIENT REVIEW	07-19-19	SEK	PGT						
		B	ISSUED FOR CLIENT REVIEW	06-20-19	CMW	PGT						

327851-HIGH RIVER-L-002.dwg 2019.08.28



LEGEND VISUAL MITIGATION PLANTING TEMPLATE - SPECIAL PLANTING AREA
LANDSCAPE PLANTING SCHEDULE (MAXIMUM VISUAL BUFFER/SCREENING EFFORT WITH MATURE NURSERY STOCK)

DECIDUOUS AND EVERGREEN TREES

SYMBOL	BOTANICAL NAME/ COMMON PLANT NAME	QUANTITY	SIZE	ROOT	MATURE HEIGHT
AA	AMELANCHIER ARBOREA DOWNY SHADBUSH	3	6'-8" HT. CLUMP	B&B	15'-20' HT.
AB	ABIES BALSAMEA BALSAM FIR	6	7'-8" HT.	B&B	45'-65' HT.
JV	JUNIPERUS VIRGINIANA EASTERN RED CEDAR	6	7'-8" HT.	B&B	40'-50' HT.
NS	NYSSA SYLVATICA BLACK GUM	5	2 1/2" CAL. MIN.	B&B	40'-60' HT.
PG	PICEA GLAUCA WHITE SPRUCE	6	7'-8" HT.	B&B	40'-60' HT.
PS	PRUNUS SEROTINO BLACK CHERRY	5	2" CAL. MIN.	B&B	50'-70' HT.
TO	THUJA OCCIDENTALIS NORTHERN WHITE CEDAR	53	7'-8" HT.	B&B	40'-60' HT.

SHRUBS

SYMBOL	BOTANICAL NAME/ COMMON PLANT NAME	QUANTITY	SIZE	ROOT	MATURE HEIGHT
AR	ARONIA ARBUTIFOLIA RED CHOKEBERRY	12	24"-30" HT.	#3/5 CONT.	7'-10' HT.
CS	CORNUS SERICEA RED TWIG DOGWOOD	15	24"-30" HT.	#3/5 CONT.	7'-9' HT.
HV	HAMAMELIS VIRGINIANA COMMON WITCH HAZEL	9	3'-4" HT.	B&B	15'-25' HT.
SA	SYMPHORICARPOS ALBUS COMMON SNOWBERRY	15	24"-30" HT.	#3/5 CONT.	3'-6' HT.
VC	VACCINIUM CORYMBOSUM HIGHBUSH BLUEBERRY	10	24"-30" HT.	#3/5 CONT.	6'-12' HT.

UNDER NEW YORK STATE EDUCATION LAW ARTICLE 145 (ENGINEERING), SECTION 7209 (2), IT IS A VIOLATION OF THE LAW FOR ANY PERSON, UNLESS ACTING UNDER THE DIRECTION OF A LICENSED PROFESSIONAL ENGINEER, TO ALTER THIS DOCUMENT.

REV	DESCRIPTION	DATE	DES	CHK	APP
E	ISSUED FOR CLIENT REVIEW	08-21-19	CMW	PGT	
D	ISSUED FOR CLIENT REVIEW	08-09-19	SEK	PGT	
C	ISSUED FOR CLIENT REVIEW	07-19-19	SEK	PGT	
B	ISSUED FOR CLIENT REVIEW	06-20-19	CMW	PGT	

TRC 249 Western Avenue
Agusta, ME 04330

PROJECT NO: 327851

REV	DESCRIPTION	DATE	DES	CHK	APP
E	ISSUED FOR CLIENT REVIEW	08-21-19	CMW	PGT	
D	ISSUED FOR CLIENT REVIEW	08-09-19	SEK	PGT	
C	ISSUED FOR CLIENT REVIEW	07-19-19	SEK	PGT	
B	ISSUED FOR CLIENT REVIEW	06-20-19	CMW	PGT	

PDT DESIGNED
CMW DRAWN
CHECKED
APPROVED

PRELIMINARY
LANDSCAPE SCREENING TEMPLATES & PLANTING SCHEDULES
HIGH RIVER ENERGY CENTER
HIGH RIVER ENERGY CENTER, LLC
FLORIDA MONTGOMERY CO., NY

REVIEW 1 DATE 04/08 AS NOTED SCALE
REVIEW 2

TRC L-007

REV. E

PRELIMINARY
NOT FOR CONSTRUCTION

