



NextEra Energy Resources: **High River Solar Energy Center**

Keddy Chandran
Project Director

September 2018

Local Investment. Jobs. Clean Energy.

Our company

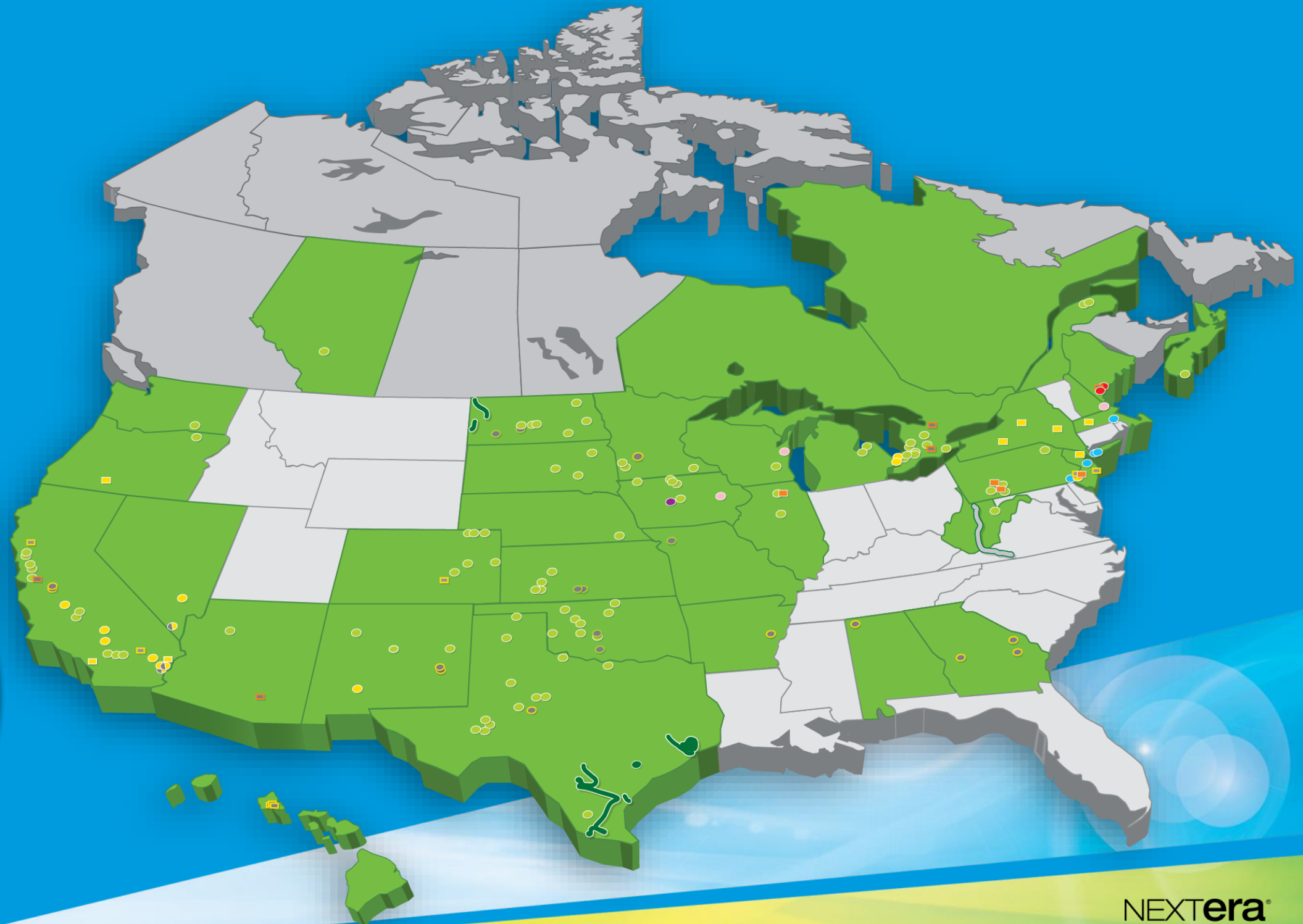
- ▶ American owned and operated



Our company

- ▶ American owned and operated
- ▶ Investments in 32 states and Canada

wind, solar,
natural gas,
oil, and
nuclear
energy



Our company

- ▶ American owned and operated
- ▶ Investments in 32 states and Canada
- ▶ **Renewable energy leader**

world's
#**1**
generator of wind
and solar energy
2018



High River Solar Energy Center

Project Summary

- ▶ A 90-megawatt photovoltaic solar energy generating facility
 - Will generate enough electricity to serve approximately 22,000 homes
- ▶ Approximately 550 acres of land
- ▶ Will satisfy Town's current setback requirements
- ▶ Adjacent to National Grid's 115 kV transmission line where energy from the project would be delivered

Frequently Asked Questions

1. Why have you chosen this location?

- Transmission line capacity: 115kV line that our analysis has shown has capacity
- Environmental Conditions: No significant environmental constraints and properly zoned
- Solar Irradiance: Research shows strong solar resource at this location

2. Will the panels harm our groundwater?

- No. Panels are made of solid materials and do not pose a chemical hazard to the general public, underlying soil or groundwater.
- Furthermore, if herbicides are used, they will be environmentally friendly and will be selected and applied in accordance with Article 10 environmental requirements.

3. Is this a done deal?

- No. The Article 10 process will take at least 18 months and provides for significant local involvement.

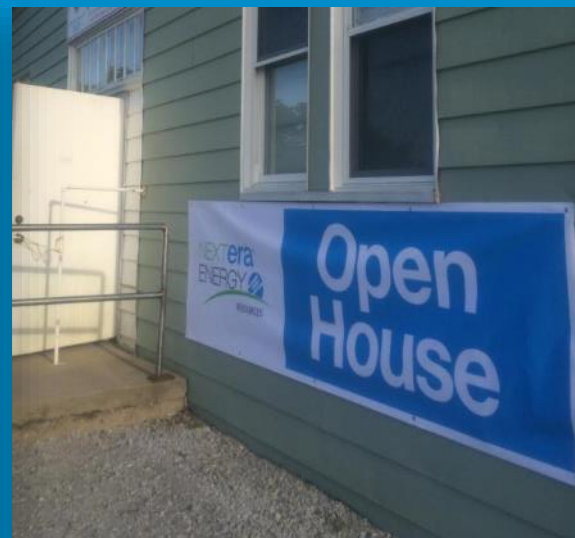
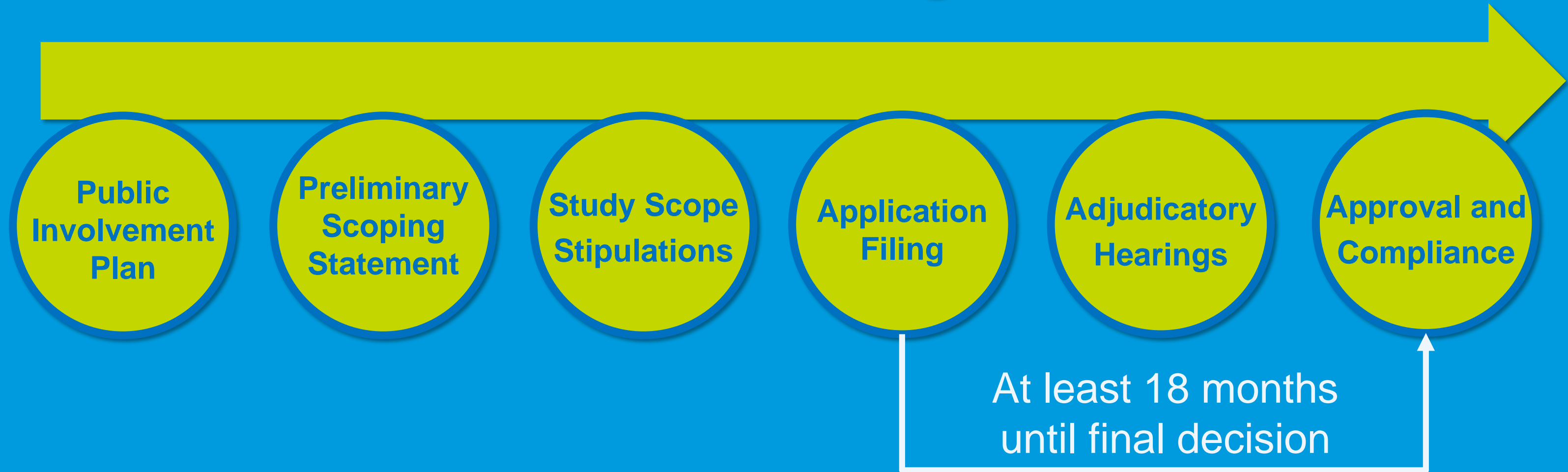
The construction and operation of the High River Solar Energy Center will provide significant positive impacts to the local community

Solar Project Benefits

- ▶ Delivers safe, clean, renewable energy
- ▶ Provides 175-250 construction jobs and two full-time operational jobs for the 30-year project life
- ▶ Supports economy through purchases of regional goods and services
- ▶ Expected to generate millions of dollars in additional revenue over the 30 year project life without increased costs for sewer, roads or schools



State Article 10 Permitting Process



Project Phase	Summary of Activities			Schedule
I: Public Involvement Program	Public Involvement Program (PIP) Plan <ul style="list-style-type: none"> - Stakeholder Engagement Activities - Identify and track stakeholder concerns & studies - Review and Approval of PIP Plan by DPS 	Meetings and Open Houses <ul style="list-style-type: none"> - Public meetings and open houses - Pre-PSS meetings with Interested Agencies 	PIP Tracking <ul style="list-style-type: none"> - Document PIP activities - Close tracking of Applicant/ Stakeholder engagements 	PIP Plan Submitted November 2017
II: Preliminary Scoping	Preliminary Scoping Statement (PSS) <ul style="list-style-type: none"> - Describe environmental setting and conditions - Summarize scope of review and proposed studies Intervenor funding <ul style="list-style-type: none"> - Funding Fee = \$350 per megawatt - Interested parties submit requests for funding 	Comment and Response Period <ul style="list-style-type: none"> - After PSS filing, 21 day comment period begins - Applicant has 21 days to file responses to comments 	Stipulations <ul style="list-style-type: none"> - Formal process mediated by Presiding Examiner - Analysis method and scope for Application is determined 	Anticipated Fall 2018
III: Pre-Application Studies and Engineering	Environmental Consultations and Field Reviews <ul style="list-style-type: none"> - Wetland and waterbody delineation - Threatened and Endangered Species - Archaeological and Historic Architecture - Consultation with state, federal agencies 	Typical Support Studies <ul style="list-style-type: none"> - Noise - Visual - Cultural - Socioeconomics - Wetlands - Waterbodies - Habitats - Invasive Species 	Permit Level Engineering <ul style="list-style-type: none"> - Existing Conditions Set - Site Plan Development - E&SC. Grading, Landscape Plans - SWPPP 	10 + Months* (activities can start in Phase II)
IV: Article 10 Application Phase	Exhibit Preparation <ul style="list-style-type: none"> - Provide and evaluate results of studies completed in Phase III - Close coordination between Engineering, Environmental, Legal, and Real Property 	Application Filing <ul style="list-style-type: none"> - Proof of Service - Expert Testimony - Funding Fee = \$1,000 per megawatt 	Completeness Determination <ul style="list-style-type: none"> - Application deemed compliant or non-compliant within 60 days of filing 	6 + Months* (activities can start in Phase III)
V: Post-Application Phase	Hearings & Testimony <ul style="list-style-type: none"> - Formal proceeding - Public comments documented - Expert testimony - Settlement negotiations 	Decision <ul style="list-style-type: none"> - Made by the Siting Board within 12 months of Application being deemed compliant 	Compliance Filings <ul style="list-style-type: none"> - Show adherence to Certificate Conditions in forms of construction plans, impact studies, mitigation efforts (as necessary) 	12 + Months

The project will undertake approximately 30 in-depth studies on environmental, health and other impacts to ensure that it operates safely

Proposed Studies Include:

Environmental

- **Wetlands and Streams**
- **Threatened and Endangered Species**
- **Species Habitat**
- **Avian Use**

Health and Safety

- **Glare**
- **Aquatic Ecology and Water Resources**
- **Electric and Magnetic Fields**
- **Noise**

Cultural and Other

- **Viewshed**
- **Archaeological**
- **Historic Architecture**
- **Decommissioning**

- Project
- Available Buildable
- Interconnection Facilities
(Collection Substation and POI
Switchyard)
- Existing Transmission Line
- Delineated Wetland
Boundary
- Delineated Wetland
- Delineated Stream
- Delineated Drainage

APPROXIMATE PROJECT AREA: 1,113 ACRES

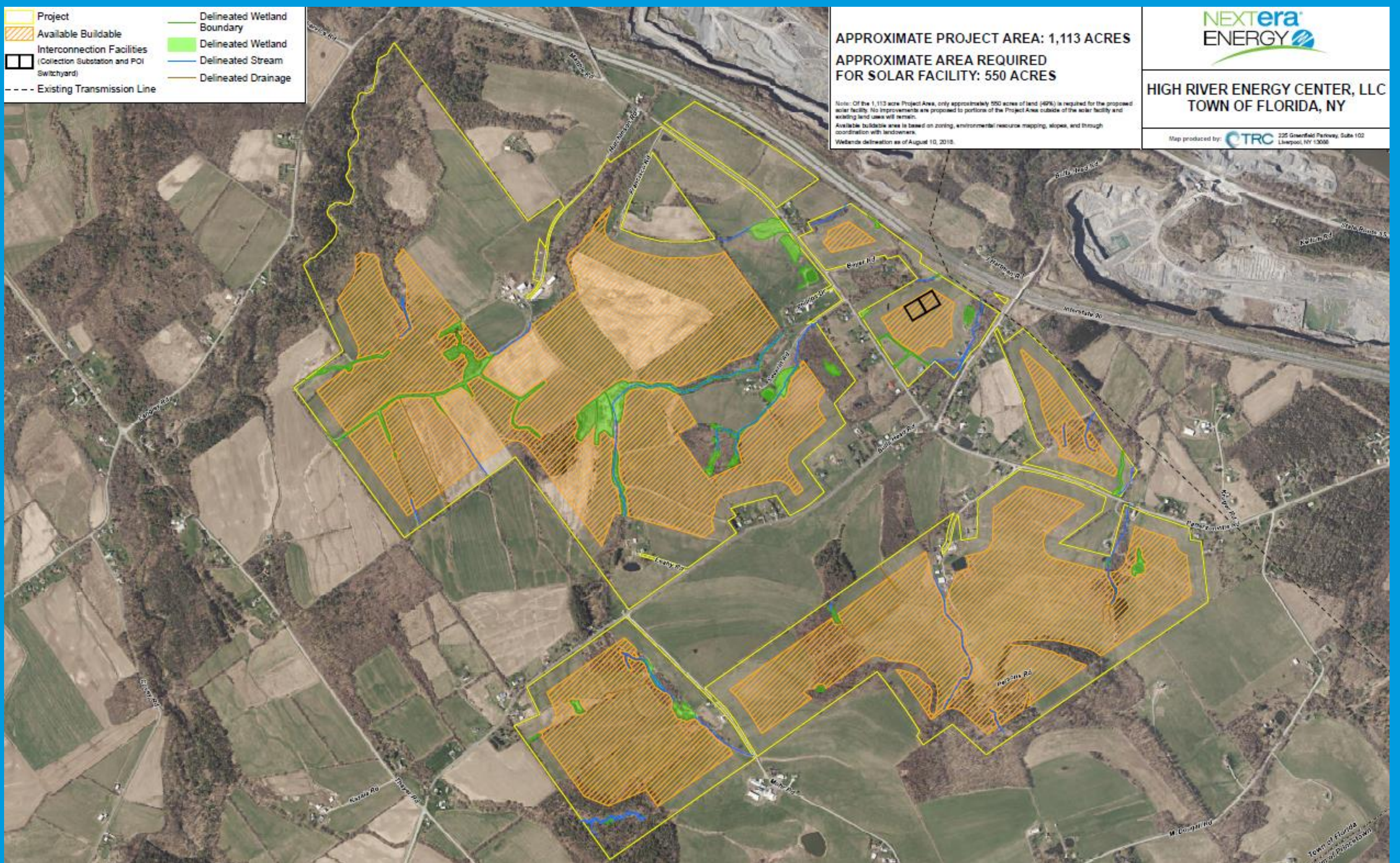
APPROXIMATE AREA REQUIRED
FOR SOLAR FACILITY: 550 ACRES

Note: Of the 1,113 acre Project Area, only approximately 550 acres of land (49%) is required for the proposed solar facility. No improvements are proposed to portions of the Project Area outside of the solar facility and existing land uses will remain.
Available buildable area is based on zoning, environmental resource mapping, slopes, and through coordination with landowners.
Wetlands delineation as of August 10, 2018.



HIGH RIVER ENERGY CENTER, LLC
TOWN OF FLORIDA, NY

Map produced by: CTRC 225 Greenfield Parkway, Suite 102
Liverpool, NY 13098



More Information

- ▶ Project Website: www.highriverenergycenter.com
- ▶ Email: info@highriverenergycenter.com
- ▶ Phone: (800) 214-7929
- ▶ FAQs: <http://highriverenergycenter.com/faq-about-high-river-solar-energy-center/>
- ▶ Stakeholder List: <http://highriverenergycenter.com/join-the-stakeholder-list/>
- ▶ DPS Case number: 17-F-0597